

Demographic Profile Northern Cambria Public Library

Population Growth: The total population of the Northern Cambria Public Library service area decreased by - 8.7 percent over the past decade to 3,835; this decline rate was lower than the statewide rate of 3.4 percent.

Age and Sex: In 2010, the Northern Cambria Public Library service area had a total population of 3,835 - 1,870 males (48.8 percent) and 1,965 females (51.2 percent). The age structure of the population in 2010 was as follows: 25.6 percent of the population was under 20 years old, 56.5 percent was 20 to 64 years old and 18.0 percent was 65 years or older.

Race and Ethnicity: For people reporting one race alone, not of Hispanic ethnicity, 98.2 percent were White; .4 percent were Black or African American; 1.0 percent were Other Race Alone.¹ A total of 14 or .4 percent of the population were Hispanic.²

Households: In 2010, there were 1,590 households in the Northern Cambria Public Library service area. The average household size was 2.41 people. Families made up 66.0 percent of the households. This figure includes both families with (27.4 percent) and without (38.6 percent) children. Of families with children less than 18 years old, 18.2 percent were married-couple families, 6.8 percent were female householder families with no husband present, and the remaining (2.5 percent) were male-headed households with no wife present.

Education: The educational attainment of the population 25 years and over was lower in the Northern Cambria Public Library service area than in Pennsylvania. During the period 2008-2012, 17.5 percent of residents had earned a Bachelor's degree or higher, compared with 27.0 percent statewide. A total of 388 or 14.1 percent had not completed high school, compared with 11.7 percent for the commonwealth as a whole.

Income and Poverty: Households with incomes of less than \$25,000 (33.2 percent) made up the largest percent of households in the Northern Cambria Public Library service area in 2008-2012. For comparison, 23.6 percent of commonwealth households were in this range during the period.

In 2008-2012, the overall poverty rate for the Northern Cambria Public Library service area was lower than Pennsylvania (12.8 percent compared to 13.1 percent). The poverty rate for the population under 18 years of age was 15.1 percent, compared with 13.7 percent of people 18 to 64 years and 7.8 percent for those aged 65 years and over. A total of 93 or 9.6 percent of all families had incomes below poverty level. In 2008-2012, 13.2 percent of families with related children and 30.3 percent of families with a female householder and no husband with related children present had incomes below the poverty level.

Class of Worker and Occupation: In 2008-2012, 81.5 percent of the workforce was private wage and salary workers; 15.6 percent were federal, state, or local government workers; and 2.9 percent were self-employed in their own (not incorporated) business.

The top occupation group for the civilian employed population 16 years and over in the Northern Cambria Public Library service area in 2008-2012 was Management, business, science, and arts (31.4 percent).

¹ Other race includes those who identified themselves as American Indian/Alaska Native, Asian, Native Hawaiian/Other Pacific Islander, Some Other Race and Two or More Races on the 2010 Census form.

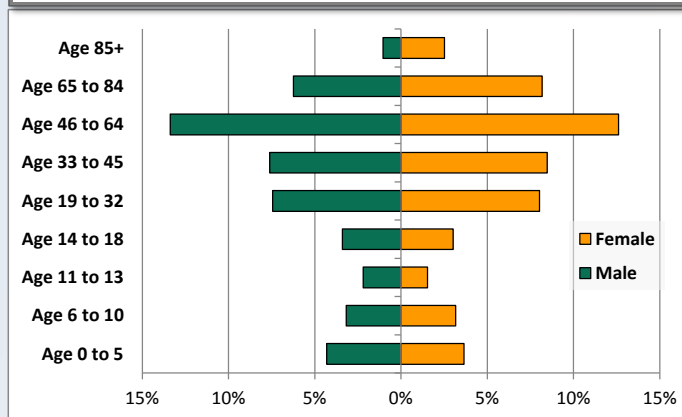
² People of Hispanic origin may be of any race.

Demographic Profile

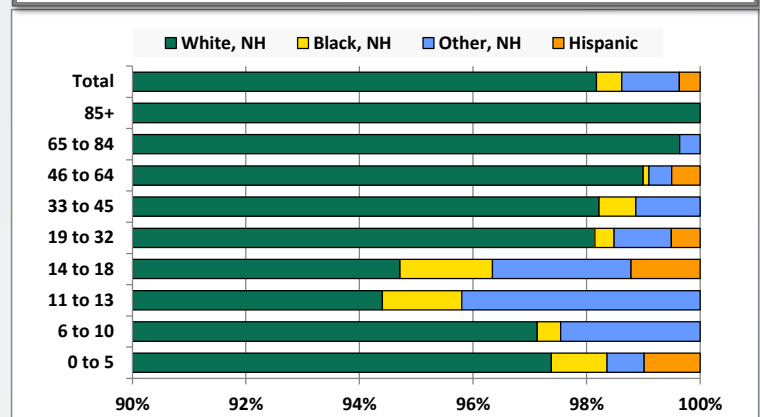
Northern Cambria Public Library

Key Indicators		
	2000	2010
Population Growth		
Total Population	4,199	3,835
10-Year Growth	N/A	-8.7%
Diversity		
White Alone, Non-Hispanic	99.0%	98.2%
Black Alone, Non-Hispanic	0.1%	0.4%
Other Race Alone, Non-Hispanic	0.6%	1.0%
Percent Hispanic	0.3%	0.4%
Aging		
Percent 65 Years and Over	21.2%	18.0%
Households		
Percent Married Couple with Own Children	20.1%	18.2%
Percent Living Alone	29.3%	29.6%

Population by Library-Defined Age Group, 2010



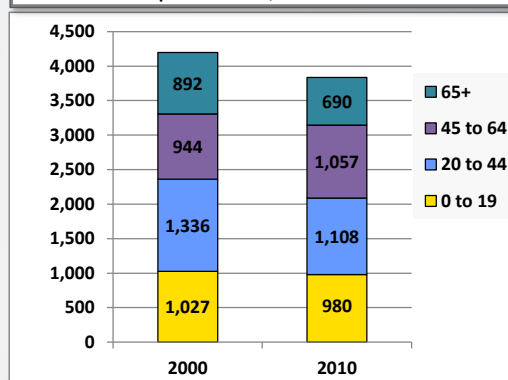
Race/Ethnicity by Library-Defined Age Group, 2010



Population Growth by Library-Defined Age Group, 2000 to 2010

Age Group	2010	Change	
		Numeric	Percent
Total	3,835	-364	-8.7%
85+	137	8	6.2%
65 to 84	553	-210	-27.5%
46 to 64	997	110	12.4%
33 to 45	617	-113	-15.5%
19 to 32	593	-106	-15.2%
14 to 18	246	-65	-20.9%
11 to 13	143	-5	-3.4%
6 to 10	244	3	1.2%
0 to 5	305	14	4.8%

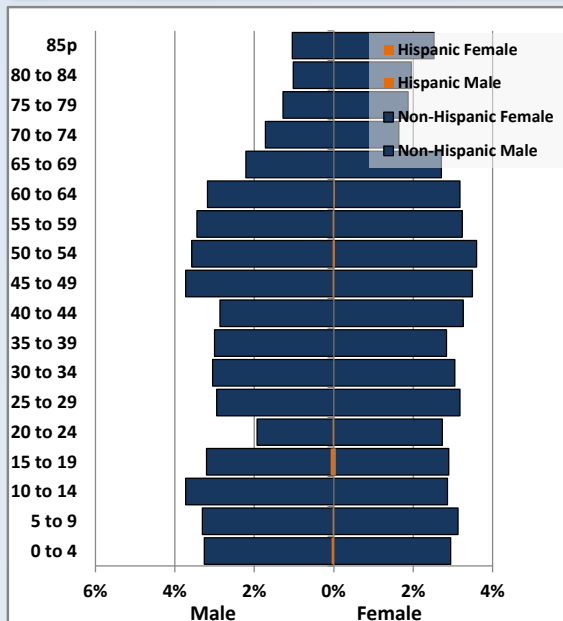
Population Total, 2000 and 2010



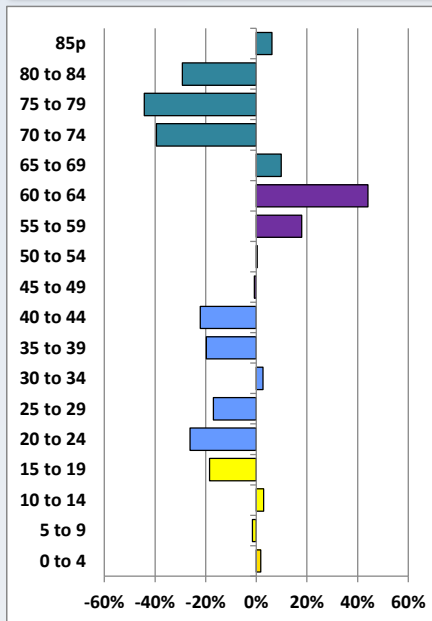
Demographic Profile

Northern Cambria Public Library

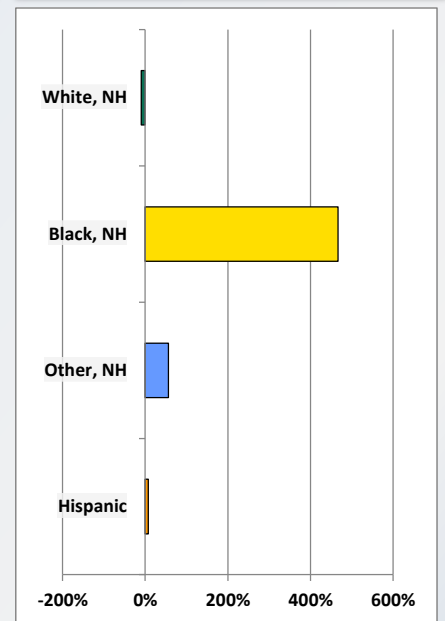
Population by 5-Year Age Cohorts



Pop Change by Age, 2000 to 2010

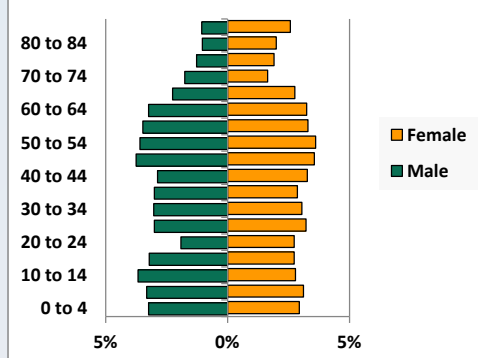


Pop Change by Race/Ethnicity, 2000 to 2010

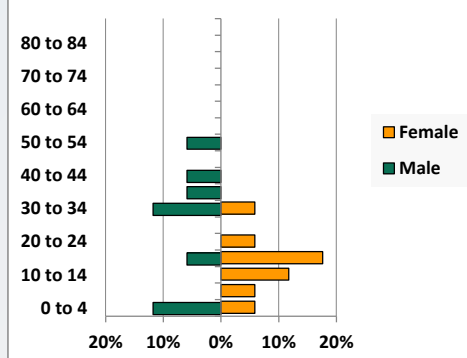


Population by Age, Race and Ethnicity 2010

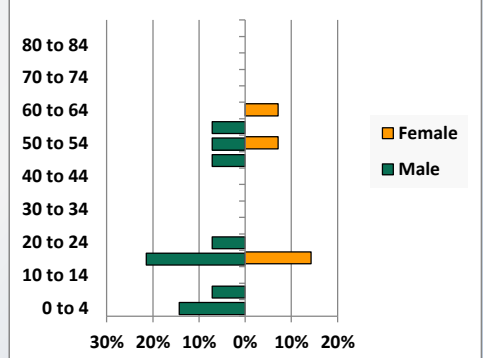
White, Not Hispanic



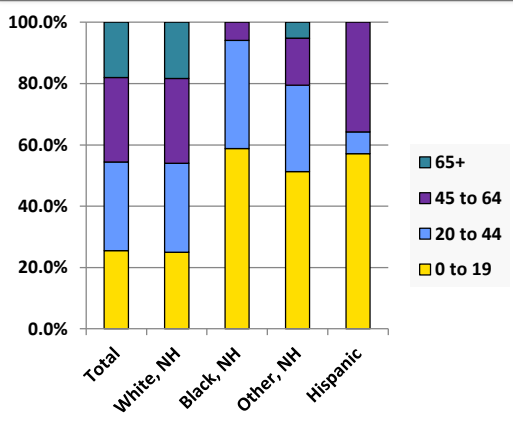
Black, Non-Hispanic



Hispanic



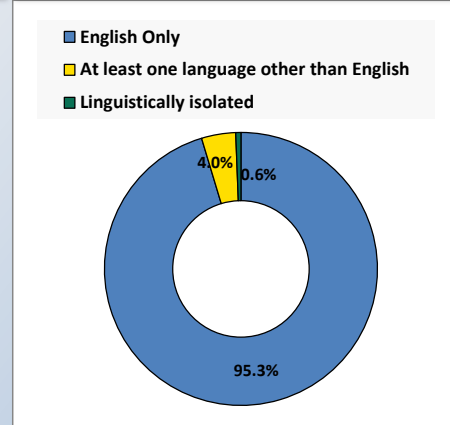
Age by Race and Ethnicity, 2010



Foreign Born, 2010



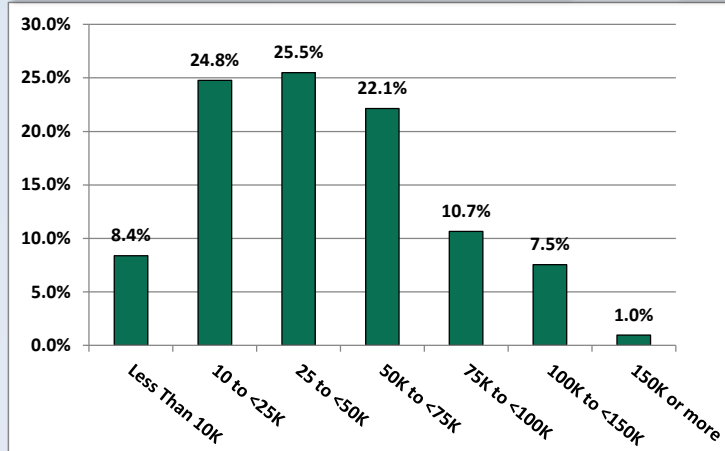
Household Language, 2010



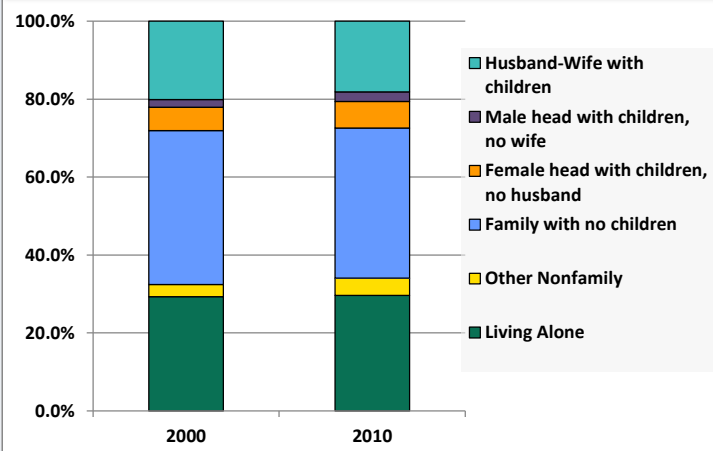
Demographic Profile

Northern Cambria Public Library

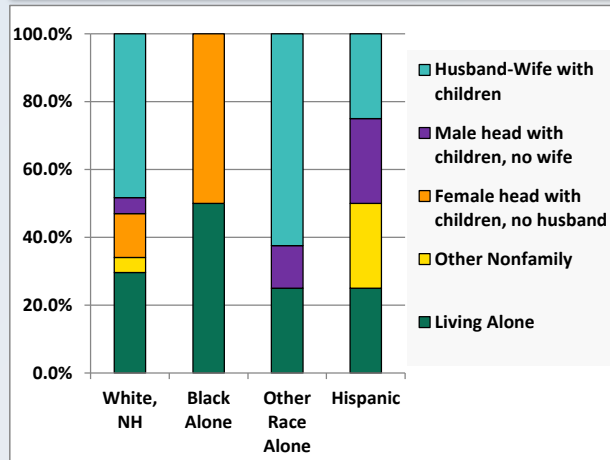
Household Income Distribution, 2008-2012



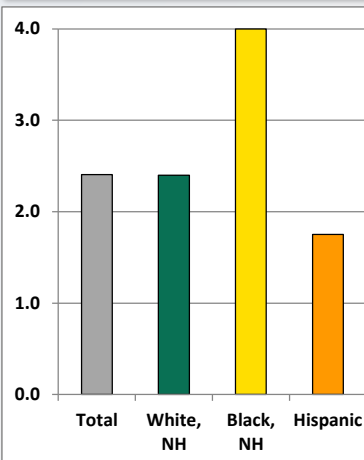
Household Type, 2000 and 2010



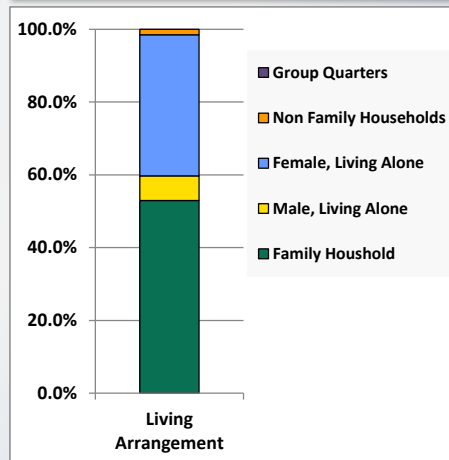
Household Type by Race/Ethnicity, 2010



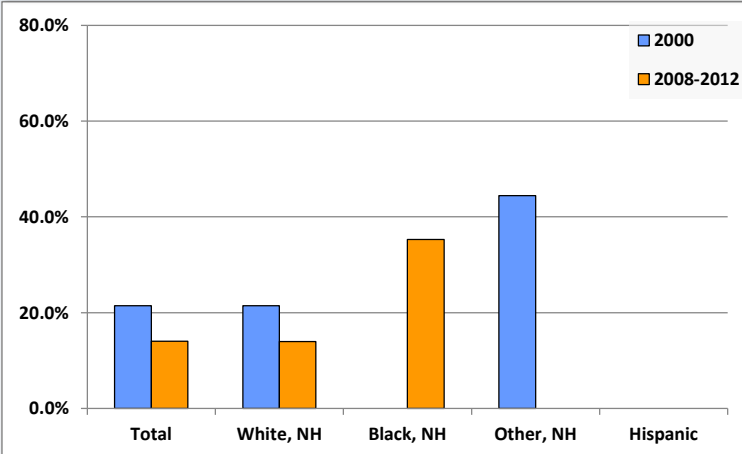
Average Household Size, 2010



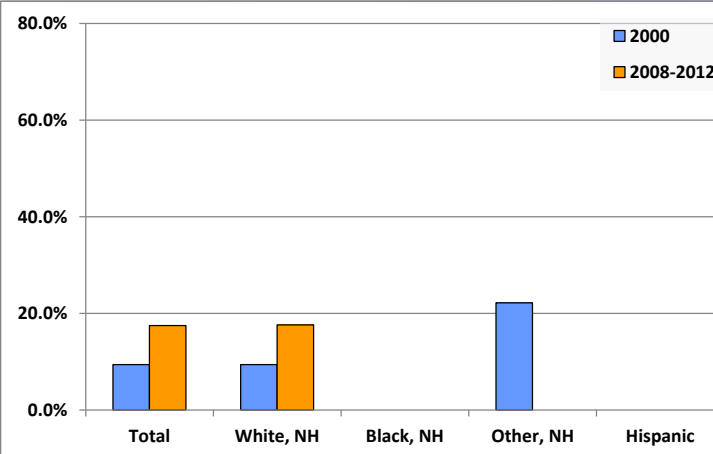
Living Arrangements 65+, 2008-2012



Percent of Adults that Did Not Complete High School



Percent of Adults Who Attained a Bachelor's Degree or Higher



Reference Data

Northern Cambria Public Library

	Total Population	White, Non- Hispanic	Black, Non- Hispanic	Other, Non- Hispanic	Detail for Other, Non-Hispanic					Hispanic or Latino
					AIAN	Asian	NHOPI	Some Other Race	Two or More Races	
A. Total Population										
2000 Total	4,199	4,158	3	25	4	10	1	4	6	13
2000 pct of Total	100.0%	99.0%	0.1%	0.6%	0.1%	0.2%	0.0%	0.1%	0.1%	0.3%
2010 Total	3,835	3,765	17	39	3	14	1	4	17	14
2010 pct of Total	100.0%	98.2%	0.4%	1.0%	0.1%	0.4%	0.0%	0.1%	0.4%	0.4%
B. Population by Major Age Groups by Race and Ethnicity										
2000										
0-19	1,027	1,006	1	11	2	4	0	4	1	9
20-64	2,280	2,262	2	12	2	6	1	0	3	4
65+	892	890	0	2	0	0	0	0	2	0
85+	129	129	0	0	0	0	0	0	0	0
2010										
0-19	980	942	10	20	0	4	0	4	12	8
20-64	2,165	2,135	7	17	2	9	1	0	5	6
65+	690	688	0	2	1	1	0	0	0	0
85+	137	137	0	0	0	0	0	0	0	0
C. Age Mix for Each Racial and Ethnic Group										
2000										
0-19	24.5%	24.2%	33.3%	44.0%	50.0%	40.0%	0.0%	100.0%	16.7%	69.2%
20-64	54.3%	54.4%	66.7%	48.0%	50.0%	60.0%	100.0%	0.0%	50.0%	30.8%
65+	21.2%	21.4%	0.0%	8.0%	0.0%	0.0%	0.0%	0.0%	33.3%	0.0%
85+	3.1%	3.1%	0.0%	0.0%	0.0%	0.0%	0.0%	0.0%	0.0%	0.0%
2010										
0-19	25.6%	25.0%	58.8%	51.3%	0.0%	28.6%	0.0%	100.0%	70.6%	57.1%
20-64	56.5%	56.7%	41.2%	43.6%	66.7%	64.3%	100.0%	0.0%	29.4%	42.9%
65+	18.0%	18.3%	0.0%	5.1%	33.3%	7.1%	0.0%	0.0%	0.0%	0.0%
85+	3.6%	3.6%	0.0%	0.0%	0.0%	0.0%	0.0%	0.0%	0.0%	0.0%
D. Racial and Ethnic Composition of Each Age Group										
2000										
0-19	100.0%	98.0%	0.1%	1.1%	0.2%	0.4%	0.0%	0.4%	0.1%	0.9%
20-64	100.0%	99.2%	0.1%	0.5%	0.1%	0.3%	0.0%	0.0%	0.1%	0.2%
65+	100.0%	99.8%	0.0%	0.2%	0.0%	0.0%	0.0%	0.0%	0.2%	0.0%
85+	100.0%	100.0%	0.0%	0.0%	0.0%	0.0%	0.0%	0.0%	0.0%	0.0%
2010										
0-19	100.0%	96.1%	1.0%	2.0%	0.0%	0.4%	0.0%	0.4%	1.2%	0.8%
20-64	100.0%	98.6%	0.3%	0.8%	0.1%	0.4%	0.0%	0.0%	0.2%	0.3%
65+	100.0%	99.7%	0.0%	0.3%	0.1%	0.1%	0.0%	0.0%	0.0%	0.0%
85+	100.0%	100.0%	0.0%	0.0%	0.0%	0.0%	0.0%	0.0%	0.0%	0.0%
E. Population Growth										
2000-2010, Change										
0-19	-47	-64	9	9	-2	0	0	0	11	-1
20-64	-115	-127	5	5	0	3	0	0	2	2
65+	-202	-202	0	0	1	1	0	0	-2	0
85+	8	8	0	0	0	0	0	0	0	0
Total	-364	-393	14	14	-1	4	0	0	11	1
2000-2010, Pct Change										
0-19	-4.6%	-6.4%	900.0%	81.8%	-100.0%	0.0%	0.0%	0.0%	1100.0%	-11.1%
20-64	-5.0%	-5.6%	250.0%	41.7%	0.0%	50.0%	0.0%	0.0%	66.7%	50.0%
65+	-22.6%	-22.7%	0.0%	0.0%	0.0%	0.0%	0.0%	0.0%	-100.0%	0.0%
85+	6.2%	6.2%	0.0%	0.0%	0.0%	0.0%	0.0%	0.0%	0.0%	0.0%
Total	-8.7%	-9.5%	466.7%	56.0%	-25.0%	40.0%	0.0%	0.0%	183.3%	7.7%

Source: Decennial Census 2010, 2000, American Community Survey 2008-2012

Prepared for the Pennsylvania State Library by The Pennsylvania State Data Center, 9/2014

Reference Data

Northern Cambria Public Library

	Total Population	White, Non- Hispanic	Black, Non- Hispanic	Other, Non- Hispanic	Detail for Other, Non-Hispanic					Hispanic or Latino
					AIAN	Asian	NHOPI	Some Other	Two or More	
								Race	Races	
F. Population by Library-Defined Age Groups, 2010										
0-5	305	297	3	2	0	1	0	0	1	3
6-10	244	237	1	6	0	2	0	1	3	0
11-13	143	135	2	6	0	0	0	2	4	0
14-18	246	233	4	6	0	1	0	1	4	3
19-32	593	582	2	6	1	3	0	0	2	3
33-45	617	606	4	7	0	4	1	0	2	0
46-64	997	987	1	4	1	2	0	0	1	5
65-84	553	551	0	2	1	1	0	0	0	0
85+	137	137	0	0	0	0	0	0	0	0
Total	3,835	3,765	17	39	3	14	1	4	17	14
G. Population by 5-Year Age Cohorts, 2010										
0-4	240	233	3	2	0	1	0	0	1	2
5-9	248	242	1	4	0	2	0	1	1	1
10-14	253	243	2	8	0	0	0	2	6	0
15-19	239	224	4	6	0	1	0	1	4	5
20-24	180	175	1	3	1	1	0	0	1	1
25-29	235	234	0	1	0	1	0	0	0	0
30-34	234	229	3	2	0	1	0	0	1	0
35-39	224	221	1	2	0	1	0	0	1	0
40-44	235	231	1	3	0	2	1	0	0	0
45-49	278	275	0	2	0	1	0	0	1	1
50-54	277	271	1	3	1	2	0	0	0	2
55-59	257	255	0	1	0	0	0	0	1	1
60-64	245	244	0	0	0	0	0	0	0	1
65-69	189	189	0	0	0	0	0	0	0	0
70-74	129	128	0	1	0	1	0	0	0	0
75-79	121	120	0	1	1	0	0	0	0	0
80-84	114	114	0	0	0	0	0	0	0	0
85-89	88	88	0	0	0	0	0	0	0	0
90-94	39	39	0	0	0	0	0	0	0	0
95-99	10	10	0	0	0	0	0	0	0	0
100+	0	0	0	0	0	0	0	0	0	0
Total	3,835	3,765	17	39	3	14	1	4	17	14

Source: Decennial Census 2010, 2000, American Community Survey 2008-2012

Prepared for the Pennsylvania State Library by The Pennsylvania State Data Center, 9/2014

Reference Data

Northern Cambria Public Library

H. Income Distribution, 2008-2012

Range (in thousands)	Households	Pct of Total
<\$10K	137	8.4%
\$10K to <\$25K	404	24.8%
\$25K to <\$50K	416	25.5%
\$50K to <\$75K	361	22.1%
\$75K to <\$100K	174	10.7%
\$100K to <\$150K	123	7.5%
\$150K+	16	1.0%

I. Household Type, 2010

Household Type	2000	2000pct	2010	2010pct
Total Households	1,763	100.0%	1,590	100.0%
Family Households	1,192	67.6%	1,049	66.0%
Husband-wife, no children w/children	355	20.1%	289	18.2%
Female head, no husband, w/ children	106	6.0%	108	6.8%
Male head, no wife, w/ children	34	1.9%	39	2.5%
Without children	697	39.5%	613	38.6%
Nonfamily households	571	32.4%	541	34.0%
Living alone	516	29.3%	471	29.6%
Other nonfamily	55	3.1%	70	4.4%

J. Household Type by Race and Ethnicity, 2008-2012

Household Type	White, NH	Black, NH	Other, NH	Hispanic
Total Households	1,576	2	8	4
Husband wife family	48.4%	0.0%	62.5%	25.0%
Family with male head, no wife	4.7%	0.0%	12.5%	25.0%
family with female head, no husband	12.9%	50.0%	0.0%	0.0%
Living alone	29.6%	50.0%	25.0%	25.0%
Other nonfamily	4.4%	0.0%	0.0%	25.0%

K. Poverty, 2008-2012

Families	Poverty	PA
All families	9.6%	9.1%
Families w/ related children	13.2%	15.3%
Female householder, no husband present	32.1%	28.8%
Female householder, no husband present, w/ related children	30.3%	39.2%
All people	12.8%	13.1%
Under 18 years	15.1%	18.4%
18 to 64 years	13.7%	12.3%
65 years and over	7.8%	8.4%

L. Educational Attainment by Race and Ethnicity, 2008-2012

Education Level	White, NH	Black	Other	Hispanic	Total
Population 25 years and over	2,730	17	0	12	2,759
Less than high school	14.0%	35.3%	0%	0.0%	14.1%
High school graduate (includes equivalency)	48.1%	0.0%	0%	100.0%	48.0%
Some college or associates degree	20.3%	64.7%	0%	0.0%	20.4%
Bachelors degree or higher	17.7%	0.0%	0%	0.0%	17.5%

M. Occupation, 2008-2012

Occupation	Estimate	Percent
Civilian population age 16 years and over	1,779	100.0%
Management, professional, and related occupations	558	31.4%
Service occupations	299	16.8%
Sales and office occupations	376	21.1%
Farming, fishing, and forestry occupations	32	1.8%
Construction, extraction, maintenance, and repair occupations	265	14.9%
Production, transportation, and material moving occupations	249	14.0%

N. Class of Worker, 2008-2012

Occupation	Estimate	Percent
Civilian population age 16 years and over	1,779	100.0%
Private, for profit, wage and salary employee	1,291	72.6%
Private, not for profit, wage and salary employee	159	8.9%
Private, for profit, wage and salary self-employed in own business	0	0.0%
Government workers	277	15.6%
Self-employed in own not incorporated business	52	2.9%
Unpaid family workers in family business	0	0.0%