

Demographic Profile Penn Area Library

Population Growth: The total population of the Penn Area Library service area increased by 2.1 percent over the past decade to 20,480; this growth rate was lower than the statewide rate of 3.4 percent.

Age and Sex: In 2010, the Penn Area Library service area had a total population of 20,480 - 10,066 males (49.2 percent) and 10,414 females (50.8 percent). The age structure of the population in 2010 was as follows: 25.4 percent of the population was under 20 years old, 59.3 percent was 20 to 64 years old and 15.3 percent was 65 years or older.

Race and Ethnicity: For people reporting one race alone, not of Hispanic ethnicity, 97.6 percent were White; .5 percent were Black or African American; 1.2 percent were Other Race Alone.¹ A total of 145 or .7 percent of the population were Hispanic.²

Households: In 2010, there were 7,727 households in the Penn Area Library service area. The average household size was 2.63 people. Families made up 77.7 percent of the households. This figure includes both families with (31.5 percent) and without (46.2 percent) children. Of families with children less than 18 years old, 26.4 percent were married-couple families, 3.8 percent were female householder families with no husband present, and the remaining (1.4 percent) were male-headed households with no wife present.

Education: The educational attainment of the population 25 years and over was higher in the Penn Area Library service area than in Pennsylvania. During the period 2008-2012, 34.7 percent of residents had earned a Bachelor's degree or higher, compared with 27.0 percent statewide. A total of 710 or 4.9 percent had not completed high school, compared with 11.7 percent for the commonwealth as a whole.

Income and Poverty: Households with incomes of \$100,000 or More (34.2 percent) made up the largest percent of households in the Penn Area Library service area in 2008-2012. For comparison, 20.8 percent of commonwealth households were in this range during the period.

In 2008-2012, the overall poverty rate for the Penn Area Library service area was lower than Pennsylvania (5.9 percent compared to 13.1 percent). The poverty rate for the population under 18 years of age was 5.2 percent, compared with 5.9 percent of people 18 to 64 years and 7.3 percent for those aged 65 years and over. A total of 279 or 4.6 percent of all families had incomes below poverty level. In 2008-2012, 6.1 percent of families with related children and 29.5 percent of families with a female householder and no husband with related children present had incomes below the poverty level.

Class of Worker and Occupation: In 2008-2012, 85.7 percent of the workforce was private wage and salary workers; 9.8 percent were federal, state, or local government workers; and 4.5 percent were self-employed in their own (not incorporated) business.

The top occupation group for the civilian employed population 16 years and over in the Penn Area Library service area in 2008-2012 was Management, business, science, and arts (44.5 percent).

¹ Other race includes those who identified themselves as American Indian/Alaska Native, Asian, Native Hawaiian/Other Pacific Islander, Some Other Race and Two or More Races on the 2010 Census form.

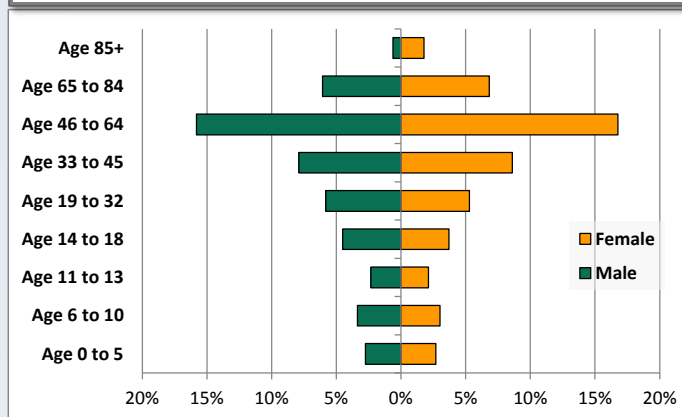
² People of Hispanic origin may be of any race.

Demographic Profile

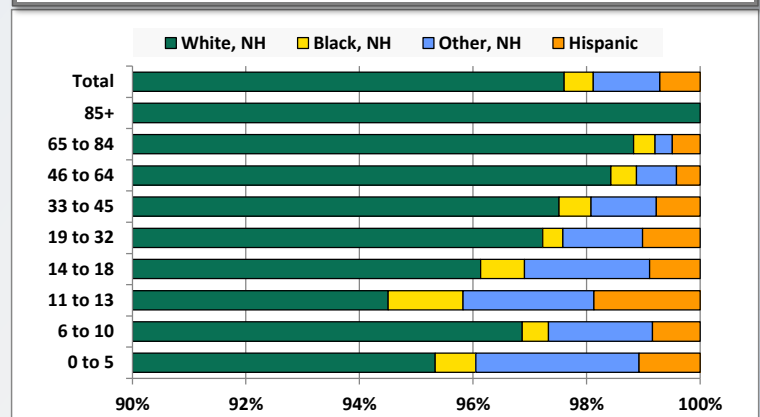
Penn Area Library

Key Indicators		
	2000	2010
Population Growth		
Total Population	20,051	20,480
10-Year Growth	N/A	2.1%
Diversity		
White Alone, Non-Hispanic	98.3%	97.6%
Black Alone, Non-Hispanic	0.4%	0.5%
Other Race Alone, Non-Hispanic	0.9%	1.2%
Percent Hispanic	0.4%	0.7%
Aging		
Percent 65 Years and Over	12.6%	15.3%
Households		
Percent Married Couple with Own Children	34.9%	26.4%
Percent Living Alone	15.5%	18.8%

Population by Library-Defined Age Group, 2010



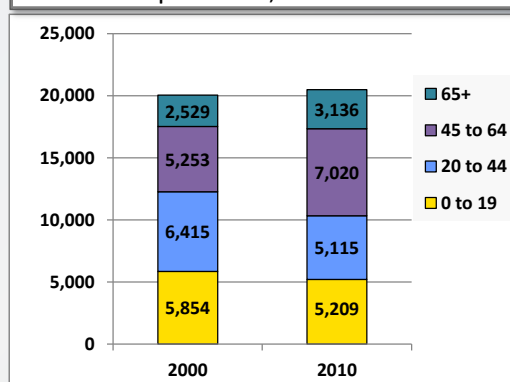
Race/Ethnicity by Library-Defined Age Group, 2010



Population Growth by Library-Defined Age Group, 2000 to 2010

Age Group	2010	Change	
		Numeric	Percent
Total	20,480	429	2.1%
85+	496	176	55.0%
65 to 84	2,640	431	19.5%
46 to 64	6,676	1,805	37.1%
33 to 45	3,380	-1,311	-27.9%
19 to 32	2,274	31	1.4%
14 to 18	1,681	159	10.4%
11 to 13	910	-120	-11.7%
6 to 10	1,309	-314	-19.3%
0 to 5	1,114	-428	-27.8%

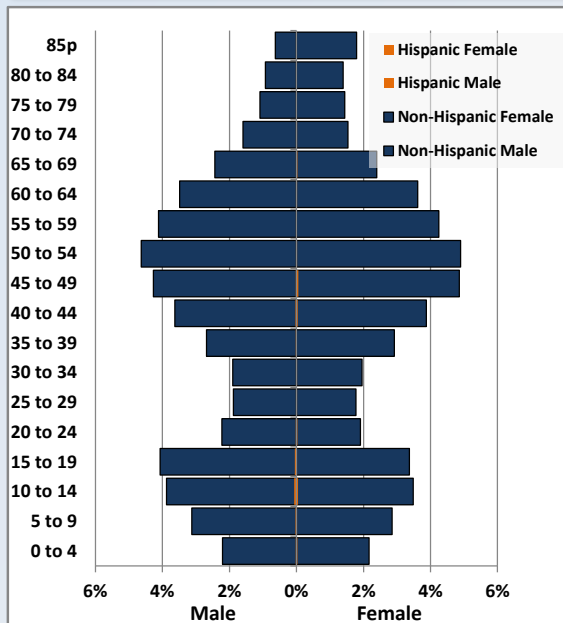
Population Total, 2000 and 2010



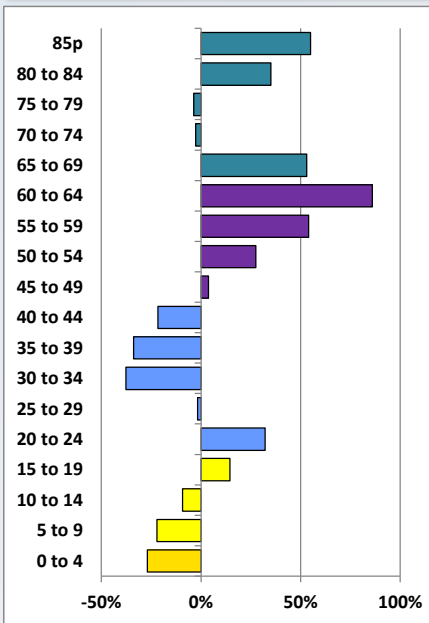
Demographic Profile

Penn Area Library

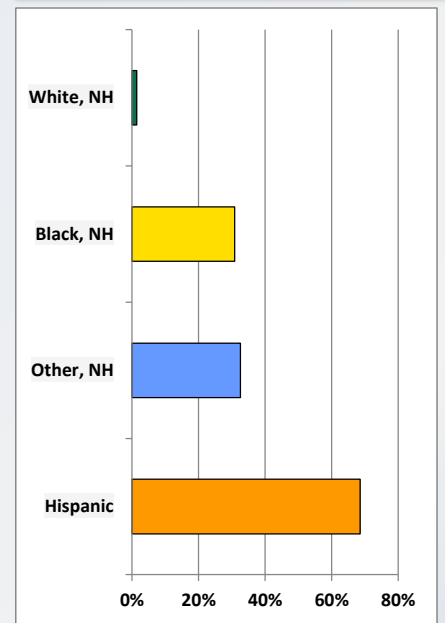
Population by 5-Year Age Cohorts



Pop Change by Age, 2000 to 2010

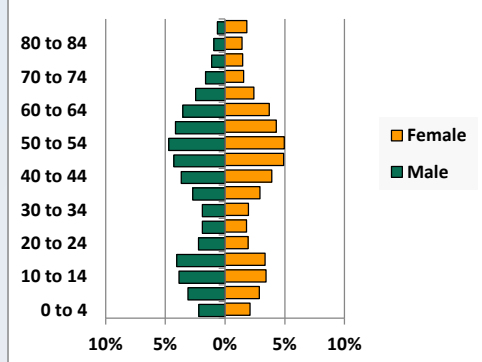


Pop Change by Race/Ethnicity, 2000 to 2010

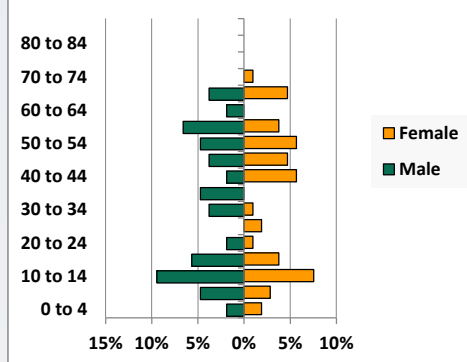


Population by Age, Race and Ethnicity 2010

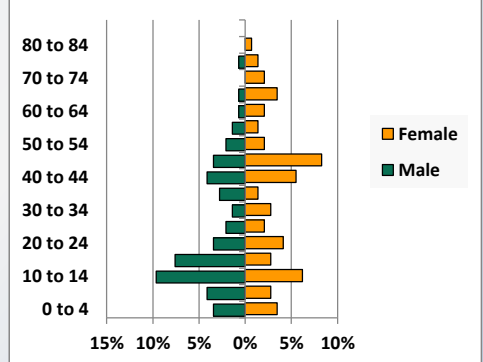
White, Not Hispanic



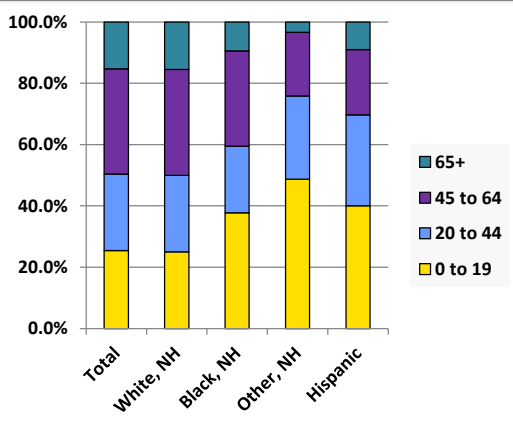
Black, Non-Hispanic



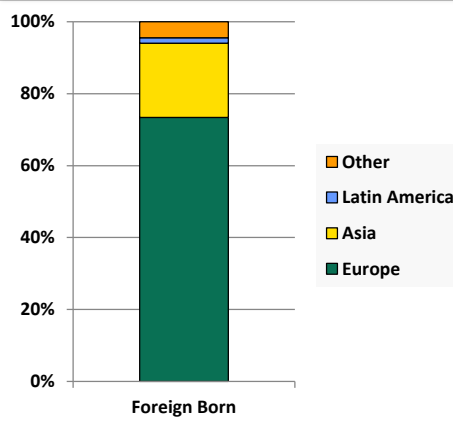
Hispanic



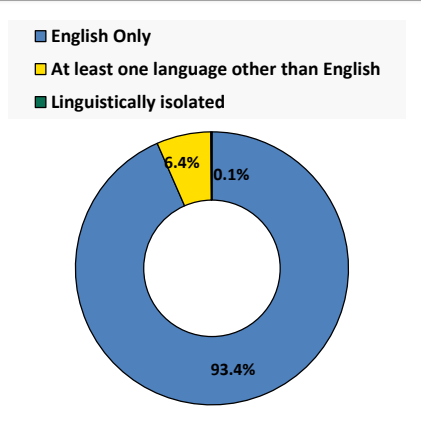
Age by Race and Ethnicity, 2010



Foreign Born, 2010



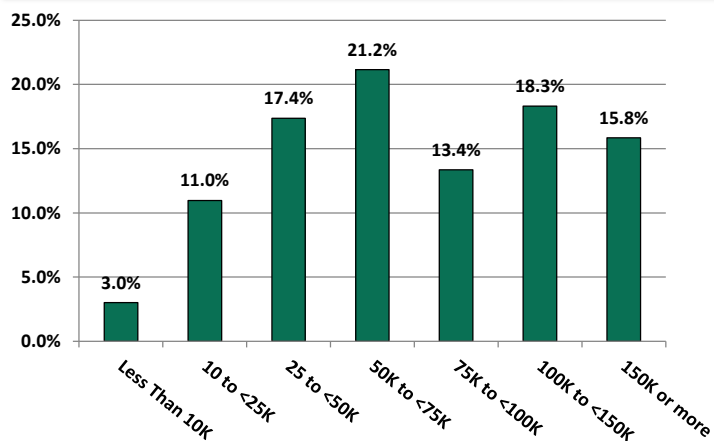
Household Language, 2010



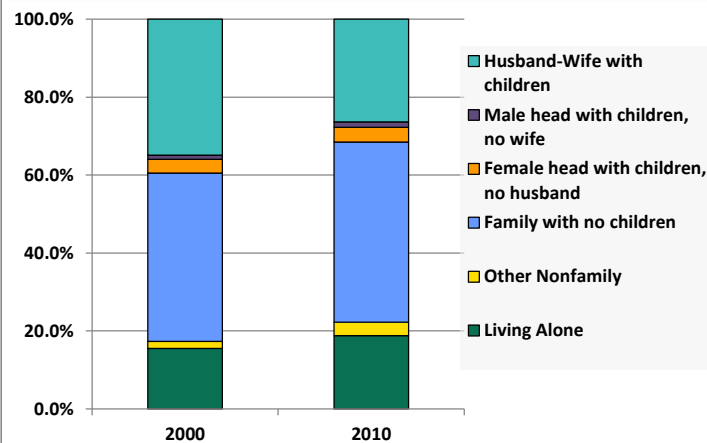
Demographic Profile

Penn Area Library

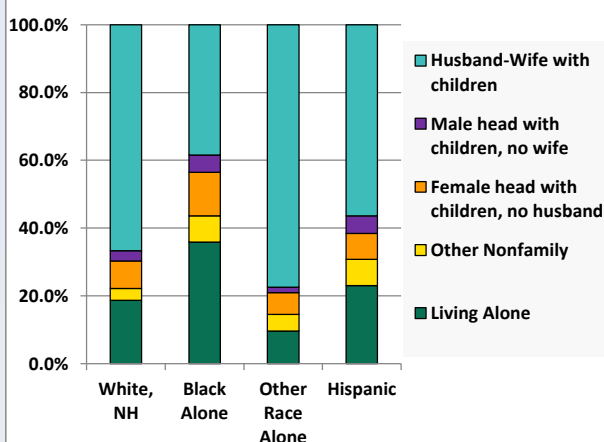
Household Income Distribution, 2008-2012



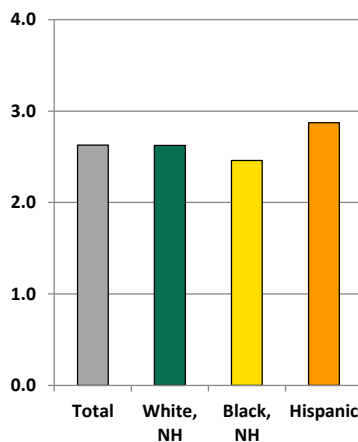
Household Type, 2000 and 2010



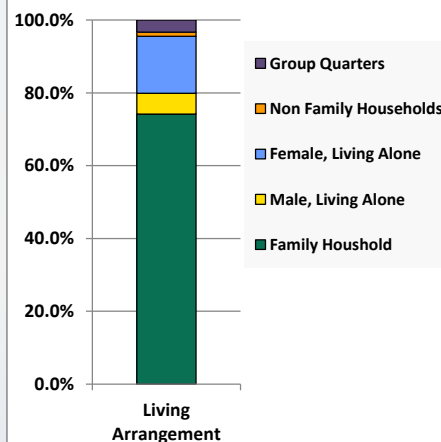
Household Type by Race/Ethnicity, 2010



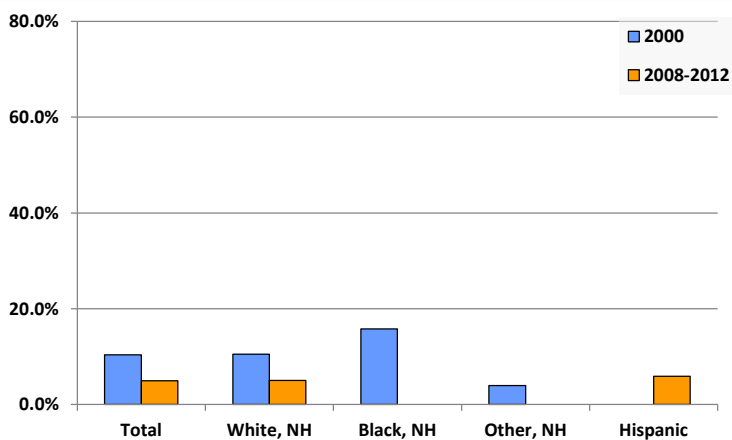
Average Household Size, 2010



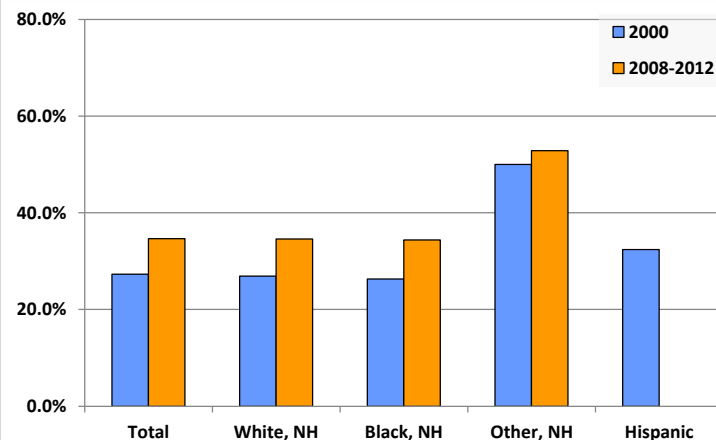
Living Arrangements 65+, 2008-2012



Percent of Adults that Did Not Complete High School



Percent of Adults Who Attained a Bachelor's Degree or Higher



Reference Data

Penn Area Library

	Total Population	White, Non- Hispanic	Black, Non- Hispanic	Other, Non- Hispanic	Detail for Other, Non-Hispanic					
					AIAN	Asian	NHOPI	Some Other Race	Two or More Races	Hispanic or Latino
A. Total Population										
2000 Total	20,051	19,703	81	181	17	88	1	13	62	86
2000 pct of Total	100.0%	98.3%	0.4%	0.9%	0.1%	0.4%	0.0%	0.1%	0.3%	0.4%
2010 Total	20,480	19,989	106	240	12	103	1	11	113	145
2010 pct of Total	100.0%	97.6%	0.5%	1.2%	0.1%	0.5%	0.0%	0.1%	0.6%	0.7%
B. Population by Major Age Groups by Race and Ethnicity										
2000										
0-19	5,854	5,701	28	86	5	37	0	6	38	39
20-64	11,668	11,488	49	86	11	49	0	3	23	45
65+	2,529	2,514	4	9	1	2	1	4	1	2
85+	320	318	0	1	0	0	0	1	0	1
2010										
0-19	5,209	4,994	40	117	5	34	1	9	68	58
20-64	12,135	11,890	56	115	7	66	0	2	40	74
65+	3,136	3,105	10	8	0	3	0	0	5	13
85+	496	496	0	0	0	0	0	0	0	0
C. Age Mix for Each Racial and Ethnic Group										
2000										
0-19	29.2%	28.9%	34.6%	47.5%	29.4%	42.0%	0.0%	46.2%	61.3%	45.3%
20-64	58.2%	58.3%	60.5%	47.5%	64.7%	55.7%	0.0%	23.1%	37.1%	52.3%
65+	12.6%	12.8%	4.9%	5.0%	5.9%	2.3%	100.0%	30.8%	1.6%	2.3%
85+	1.6%	1.6%	0.0%	0.6%	0.0%	0.0%	0.0%	7.7%	0.0%	1.2%
2010										
0-19	25.4%	25.0%	37.7%	48.8%	41.7%	33.0%	100.0%	81.8%	60.2%	40.0%
20-64	59.3%	59.5%	52.8%	47.9%	58.3%	64.1%	0.0%	18.2%	35.4%	51.0%
65+	15.3%	15.5%	9.4%	3.3%	0.0%	2.9%	0.0%	0.0%	4.4%	9.0%
85+	2.4%	2.5%	0.0%	0.0%	0.0%	0.0%	0.0%	0.0%	0.0%	0.0%
D. Racial and Ethnic Composition of Each Age Group										
2000										
0-19	100.0%	97.4%	0.5%	1.5%	0.1%	0.6%	0.0%	0.1%	0.6%	0.7%
20-64	100.0%	98.5%	0.4%	0.7%	0.1%	0.4%	0.0%	0.0%	0.2%	0.4%
65+	100.0%	99.4%	0.2%	0.4%	0.0%	0.1%	0.0%	0.2%	0.0%	0.1%
85+	100.0%	99.4%	0.0%	0.3%	0.0%	0.0%	0.0%	0.3%	0.0%	0.3%
2010										
0-19	100.0%	95.9%	0.8%	2.2%	0.1%	0.7%	0.0%	0.2%	1.3%	1.1%
20-64	100.0%	98.0%	0.5%	0.9%	0.1%	0.5%	0.0%	0.0%	0.3%	0.6%
65+	100.0%	99.0%	0.3%	0.3%	0.0%	0.1%	0.0%	0.0%	0.2%	0.4%
85+	100.0%	100.0%	0.0%	0.0%	0.0%	0.0%	0.0%	0.0%	0.0%	0.0%
E. Population Growth										
2000-2010, Change										
0-19	-645	-707	12	31	0	-3	1	3	30	19
20-64	467	402	7	29	-4	17	0	-1	17	29
65+	607	591	6	-1	-1	1	-1	-4	4	11
85+	176	178	0	-1	0	0	0	-1	0	-1
Total	429	286	25	59	-5	15	0	-2	51	59
2000-2010, Pct Change										
0-19	-11.0%	-12.4%	42.9%	36.0%	0.0%	-8.1%	0.0%	50.0%	78.9%	48.7%
20-64	4.0%	3.5%	14.3%	33.7%	-36.4%	34.7%	0.0%	-33.3%	73.9%	64.4%
65+	24.0%	23.5%	150.0%	-11.1%	-100.0%	50.0%	-100.0%	-100.0%	400.0%	550.0%
85+	55.0%	56.0%	0.0%	-100.0%	0.0%	0.0%	0.0%	-100.0%	0.0%	-100.0%
Total	2.1%	1.5%	30.9%	32.6%	-29.4%	17.0%	0.0%	-15.4%	82.3%	68.6%

Source: Decennial Census 2010, 2000, American Community Survey 2008-2012

Prepared for the Pennsylvania State Library by The Pennsylvania State Data Center, 9/2014

Reference Data

Penn Area Library

					Detail for Other, Non-Hispanic					Hispanic or Latino
	Total Population	White, Non-Hispanic	Black, Non-Hispanic	Other, Non-Hispanic	AIAN	Asian	NHOPI	Some Other Race	Two or More Races	
F. Population by Library-Defined Age Groups, 2010										
0-5	1,114	1,062	8	32	1	9	0	1	21	12
6-10	1,309	1,268	6	24	1	9	0	3	11	11
11-13	910	860	12	21	0	7	1	0	13	17
14-18	1,681	1,616	13	37	3	8	0	5	21	15
19-32	2,274	2,211	8	32	1	13	0	0	18	23
33-45	3,380	3,296	19	39	3	26	0	0	10	26
46-64	6,676	6,571	30	47	3	28	0	2	14	28
65-84	2,640	2,609	10	8	0	3	0	0	5	13
85+	496	496	0	0	0	0	0	0	0	0
Total	20,480	19,989	106	240	12	103	1	11	113	145
G. Population by 5-Year Age Cohorts, 2010										
0-4	905	862	4	29	0	8	0	1	20	10
5-9	1,235	1,196	8	21	2	8	0	3	8	10
10-14	1,531	1,456	18	34	1	9	1	1	22	23
15-19	1,538	1,480	10	33	2	9	0	4	18	15
20-24	858	830	3	14	0	2	0	0	12	11
25-29	756	740	2	8	0	6	0	0	2	6
30-34	796	774	5	11	1	7	0	0	3	6
35-39	1,154	1,127	5	16	1	10	0	0	5	6
40-44	1,551	1,513	8	16	2	10	0	0	4	14
45-49	1,886	1,836	9	24	1	17	0	1	5	17
50-54	1,957	1,931	11	9	1	4	0	0	4	6
55-59	1,717	1,691	11	11	1	7	0	1	2	4
60-64	1,460	1,448	2	6	0	3	0	0	3	4
65-69	996	978	9	3	0	1	0	0	2	6
70-74	646	640	1	2	0	0	0	0	2	3
75-79	521	517	0	1	0	0	0	0	1	3
80-84	477	474	0	2	0	2	0	0	0	1
85-89	309	309	0	0	0	0	0	0	0	0
90-94	131	131	0	0	0	0	0	0	0	0
95-99	54	54	0	0	0	0	0	0	0	0
100+	2	2	0	0	0	0	0	0	0	0
Total	20,480	19,989	106	240	12	103	1	11	113	145

Source: Decennial Census 2010, 2000, American Community Survey 2008-2012

Prepared for the Pennsylvania State Library by The Pennsylvania State Data Center, 9/2014

Reference Data

Penn Area Library

H. Income Distribution, 2008-2012

Range (in thousands)	Households	Pct of Total
<\$10K	231	3.0%
\$10K to <\$25K	841	11.0%
\$25K to <\$50K	1,333	17.4%
\$50K to <\$75K	1,624	21.2%
\$75K to <\$100K	1,025	13.4%
\$100K to <\$150K	1,406	18.3%
\$150K+	1,216	15.8%

I. Household Type, 2010

Household Type	2000	2000pct	2010	2010pct
Total Households	7,056	100.0%	7,727	100.0%
Family Households	5,834	82.7%	6,005	77.7%
Husband-wife, no children w/children	2,461	34.9%	2,037	26.4%
Female head, no husband, w/ children	249	3.5%	293	3.8%
Male head, no wife, w/ children	74	1.0%	106	1.4%
Without children	3,050	43.2%	3,569	46.2%
Nonfamily households	1,222	17.3%	1,722	22.3%
Living alone	1,095	15.5%	1,451	18.8%
Other nonfamily	127	1.8%	271	3.5%

J. Household Type by Race and Ethnicity, 2008-2012

Household Type	White, NH	Black, NH	Other, NH	Hispanic
Total Households	7,594	39	62	39
Husband wife family	66.7%	38.5%	77.4%	56.4%
Family with male head, no wife	3.1%	5.1%	1.6%	5.1%
family with female head, no husband	8.1%	12.8%	6.5%	7.7%
Living alone	18.7%	35.9%	9.7%	23.1%
Other nonfamily	3.5%	7.7%	4.8%	7.7%

K. Poverty, 2008-2012

Families	Poverty	PA
All families	4.6%	9.1%
Families w/ related children	6.1%	15.3%
Female householder, no husband present	18.7%	28.8%
Female householder, no husband present, w/ related children	29.5%	39.2%
All people	5.9%	13.1%
Under 18 years	5.2%	18.4%
18 to 64 years	5.9%	12.3%
65 years and over	7.3%	8.4%

L. Educational Attainment by Race and Ethnicity, 2008-2012

Education Level	White, NH	Black	Other	Hispanic	Total
Population 25 years and over	14,177	64	87	17	14,345
Less than high school	5.0%	0.0%	0%	5.9%	4.9%
High school graduate (includes equivalency)	31.2%	26.6%	34%	64.7%	31.3%
Some college or associates degree	29.2%	39.1%	13%	29.4%	29.1%
Bachelors degree or higher	34.6%	34.4%	53%	0.0%	34.7%

M. Occupation, 2008-2012

Occupation	Estimate	Percent
Civilian population age 16 years and over	10,516	100.0%
Management, professional, and related occupations	4,681	44.5%
Service occupations	1,608	15.3%
Sales and office occupations	2,409	22.9%
Farming, fishing, and forestry occupations	0	0.0%
Construction, extraction, maintenance, and repair occupations	759	7.2%
Production, transportation, and material moving occupations	1,059	10.1%

N. Class of Worker, 2008-2012

Occupation	Estimate	Percent
Civilian population age 16 years and over	10,516	100.0%
Private, for profit, wage and salary employee	7,422	70.6%
Private, not for profit, wage and salary employee	1,127	10.7%
Private, for profit, wage and salary self-employed in own business	466	4.4%
Government workers	1,032	9.8%
Self-employed in own not incorporated business	469	4.5%
Unpaid family workers in family business	0	0.0%

Source: Decennial Census 2010, 2000, American Community Survey 2008-2012
Prepared for the Pennsylvania State Library by The Pennsylvania State Data Center, 9/2014