

## Demographic Profile Peters Township Public Library

**Population Growth:** The total population of the Peters Township Public Library service area increased by 20.8 percent over the past decade to 21,213; this growth rate was higher than the statewide rate of 3.4 percent.

**Age and Sex:** In 2010, the Peters Township Public Library service area had a total population of 21,213 - 10,434 males (49.2 percent) and 10,779 females (50.8 percent). The age structure of the population in 2010 was as follows: 31.0 percent of the population was under 20 years old, 55.5 percent was 20 to 64 years old and 13.4 percent was 65 years or older.

**Race and Ethnicity:** For people reporting one race alone, not of Hispanic ethnicity, 95.3 percent were White; .5 percent were Black or African American; 2.7 percent were Other Race Alone.<sup>1</sup> A total of 316 or 1.5 percent of the population were Hispanic.<sup>2</sup>

**Households:** In 2010, there were 7,292 households in the Peters Township Public Library service area. The average household size was 2.88 people. Families made up 83.4 percent of the households. This figure includes both families with (40.7 percent) and without (42.6 percent) children. Of families with children less than 18 years old, 36.5 percent were married-couple families, 2.8 percent were female householder families with no husband present, and the remaining (1.4 percent) were male-headed households with no wife present.

**Education:** The educational attainment of the population 25 years and over was higher in the Peters Township Public Library service area than in Pennsylvania. During the period 2008-2012, 56.1 percent of residents had earned a Bachelor's degree or higher, compared with 27.0 percent statewide. A total of 567 or 4.1 percent had not completed high school, compared with 11.7 percent for the commonwealth as a whole.

**Income and Poverty:** Households with incomes of \$100,000 or More (49.6 percent) made up the largest percent of households in the Peters Township Public Library service area in 2008-2012. For comparison, 20.8 percent of commonwealth households were in this range during the period.

In 2008-2012, the overall poverty rate for the Peters Township Public Library service area was lower than Pennsylvania (3.4 percent compared to 13.1 percent). The poverty rate for the population under 18 years of age was 3.8 percent, compared with 3.2 percent of people 18 to 64 years and 3.7 percent for those aged 65 years and over. A total of 111 or 1.9 percent of all families had incomes below poverty level. In 2008-2012, 3.1 percent of families with related children and 7.9 percent of families with a female householder and no husband with related children present had incomes below the poverty level.

**Class of Worker and Occupation:** In 2008-2012, 83.0 percent of the workforce was private wage and salary workers; 9.7 percent were federal, state, or local government workers; and 6.8 percent were self-employed in their own (not incorporated) business.

The top occupation group for the civilian employed population 16 years and over in the Peters Township Public Library service area in 2008-2012 was Management, business, science, and arts (53.4 percent).

---

<sup>1</sup> Other race includes those who identified themselves as American Indian/Alaska Native, Asian, Native Hawaiian/Other Pacific Islander, Some Other Race and Two or More Races on the 2010 Census form.

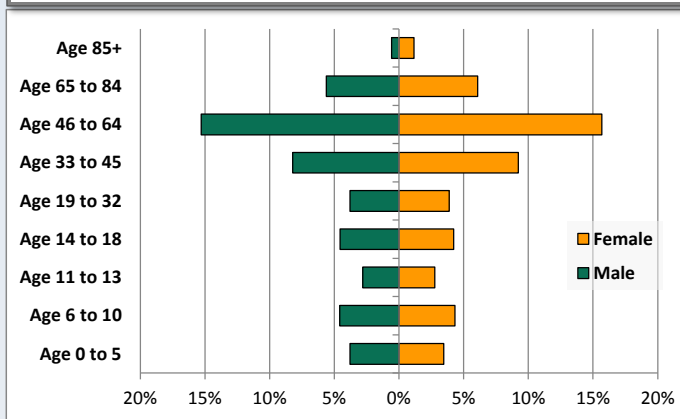
<sup>2</sup> People of Hispanic origin may be of any race.

# Demographic Profile

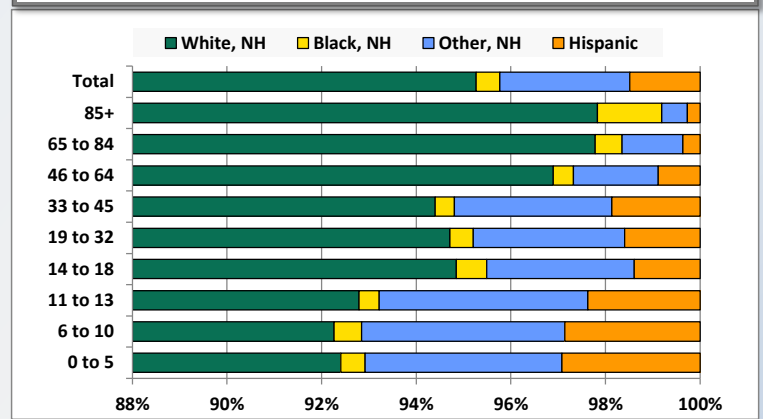
Peters Township Public Library

Key Indicators		
	2000	2010
<b>Population Growth</b>		
Total Population	17,566	21,213
10-Year Growth	N/A	20.8%
<b>Diversity</b>		
White Alone, Non-Hispanic	97.3%	95.3%
Black Alone, Non-Hispanic	0.5%	0.5%
Other Race Alone, Non-Hispanic	1.5%	2.7%
Percent Hispanic	0.7%	1.5%
<b>Aging</b>		
Percent 65 Years and Over	13.0%	13.4%
<b>Households</b>		
Percent Married Couple with Own Children	38.3%	36.5%
Percent Living Alone	13.8%	14.2%

Population by Library-Defined Age Group, 2010



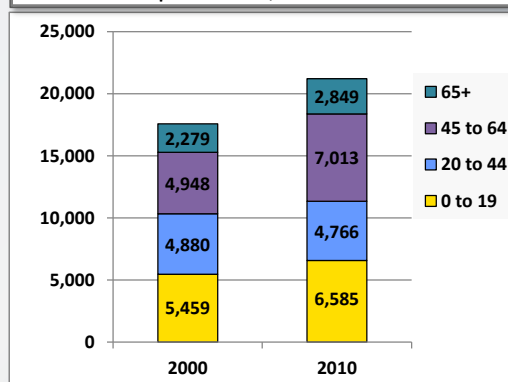
Race/Ethnicity by Library-Defined Age Group, 2010



Population Growth by Library-Defined Age Group, 2000 to 2010

Age Group	2010	Change	
		Numeric	Percent
Total	21,213	3,647	20.8%
85+	369	113	44.1%
65 to 84	2,480	457	22.6%
46 to 64	6,571	1,972	42.9%
33 to 45	3,698	-301	-7.5%
19 to 32	1,626	283	21.1%
14 to 18	1,863	452	32.0%
11 to 13	1,179	248	26.6%
6 to 10	1,887	347	22.5%
0 to 5	1,540	76	5.2%

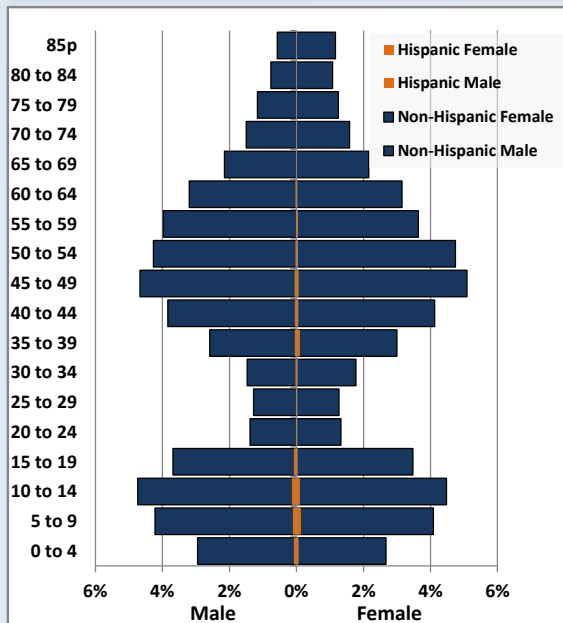
Population Total, 2000 and 2010



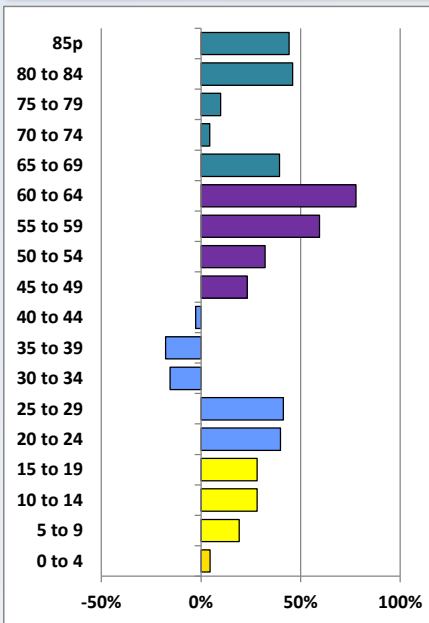
# Demographic Profile

Peters Township Public Library

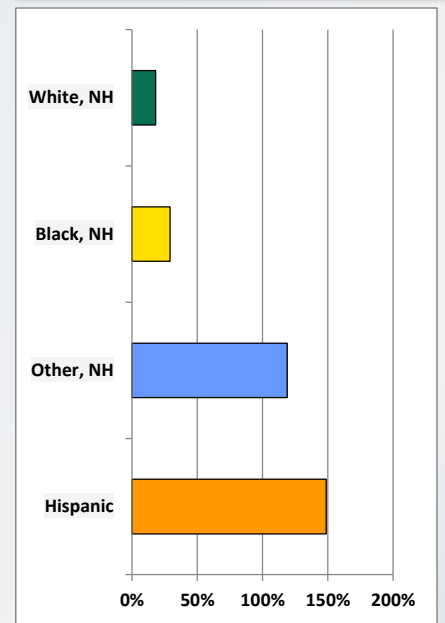
Population by 5-Year Age Cohorts



Pop Change by Age, 2000 to 2010

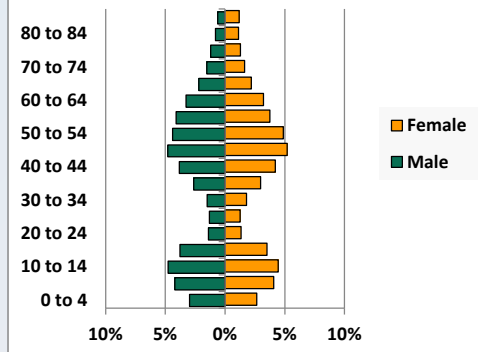


Pop Change by Race/Ethnicity, 2000 to 2010

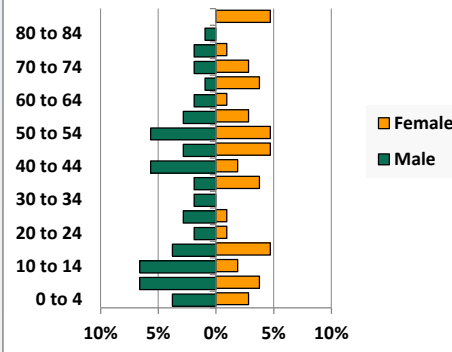


Population by Age, Race and Ethnicity 2010

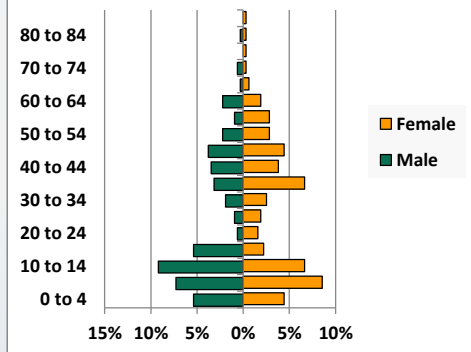
White, Not Hispanic



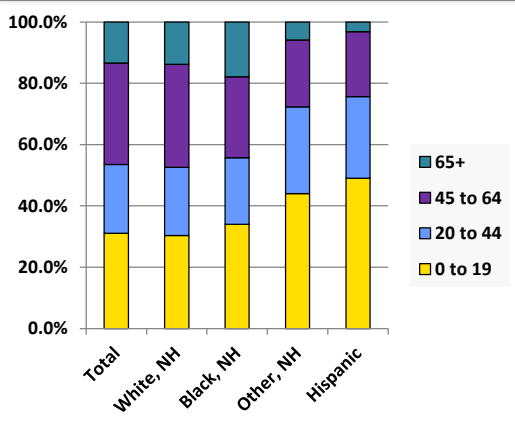
Black, Non-Hispanic



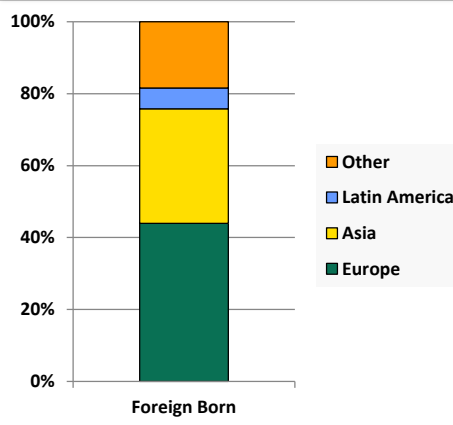
Hispanic



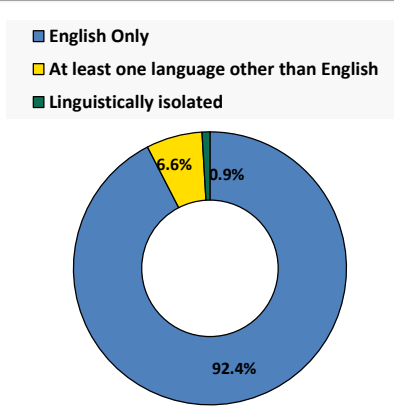
Age by Race and Ethnicity, 2010



Foreign Born, 2010



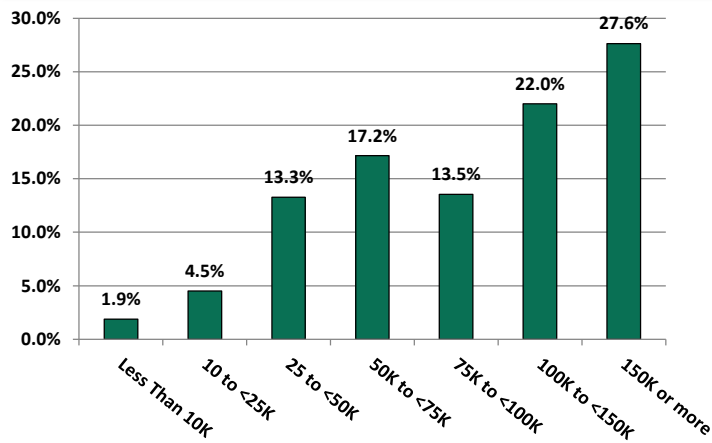
Household Language, 2010



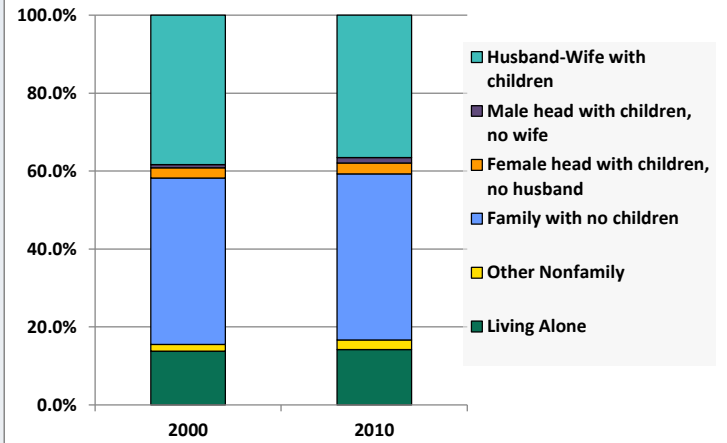
# Demographic Profile

Peters Township Public Library

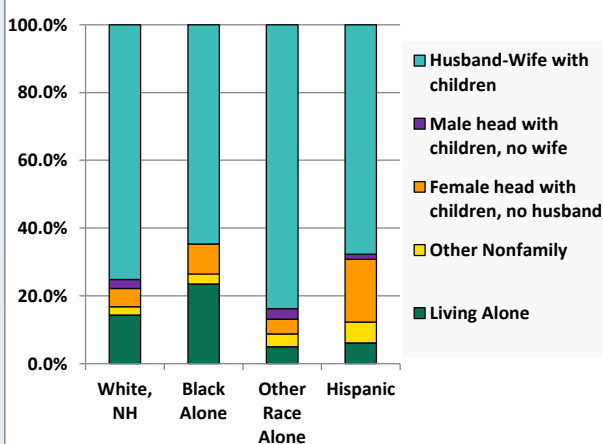
Household Income Distribution, 2008-2012



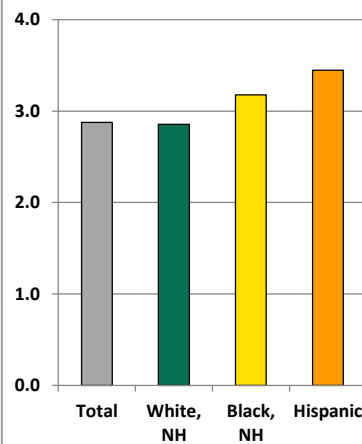
Household Type, 2000 and 2010



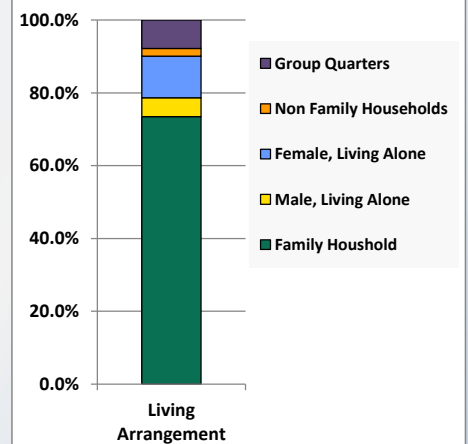
Household Type by Race/Ethnicity, 2010



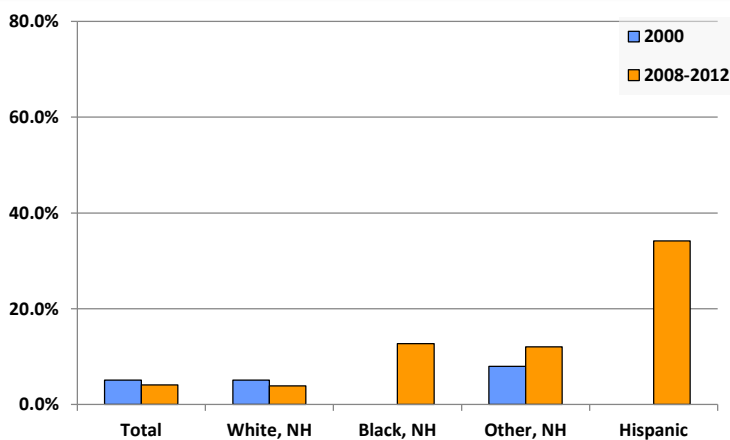
Average Household Size, 2010



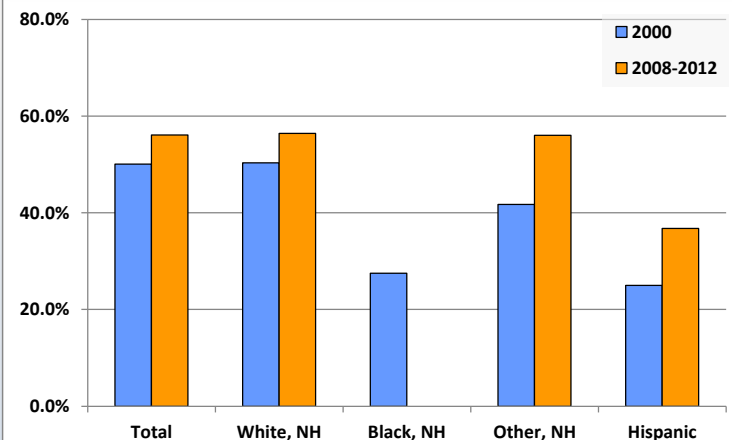
Living Arrangements 65+, 2008-2012



Percent of Adults that Did Not Complete High School



Percent of Adults Who Attained a Bachelor's Degree or Higher



# Reference Data

## Peters Township Public Library

	Total Population	White, Non- Hispanic	Black, Non- Hispanic	Other, Non- Hispanic	Detail for Other, Non-Hispanic					Hispanic or Latino
					AIAN	Asian	NHOPI	Some Other Race	Two or More Races	
A. Total Population										
2000 Total	17,566	17,091	82	266	4	191	5	15	51	127
2000 pct of Total	100.0%	97.3%	0.5%	1.5%	0.0%	1.1%	0.0%	0.1%	0.3%	0.7%
2010 Total	21,213	20,209	106	582	13	414	0	10	145	316
2010 pct of Total	100.0%	95.3%	0.5%	2.7%	0.1%	2.0%	0.0%	0.0%	0.7%	1.5%
B. Population by Major Age Groups by Race and Ethnicity										
2000										
0-19	5,459	5,262	37	103	0	65	2	8	28	57
20-64	9,828	9,577	40	148	4	115	3	4	22	63
65+	2,279	2,252	5	15	0	11	0	3	1	7
85+	256	253	1	1	0	0	0	1	0	1
2010										
0-19	6,585	6,138	36	256	1	148	0	4	103	155
20-64	11,779	11,285	51	292	12	237	0	6	37	151
65+	2,849	2,786	19	34	0	29	0	0	5	10
85+	369	361	5	2	0	2	0	0	0	1
C. Age Mix for Each Racial and Ethnic Group										
2000										
0-19	31.1%	30.8%	45.1%	38.7%	0.0%	34.0%	40.0%	53.3%	54.9%	44.9%
20-64	55.9%	56.0%	48.8%	55.6%	100.0%	60.2%	60.0%	26.7%	43.1%	49.6%
65+	13.0%	13.2%	6.1%	5.6%	0.0%	5.8%	0.0%	20.0%	2.0%	5.5%
85+	1.5%	1.5%	1.2%	0.4%	0.0%	0.0%	0.0%	6.7%	0.0%	0.8%
2010										
0-19	31.0%	30.4%	34.0%	44.0%	7.7%	35.7%	0.0%	40.0%	71.0%	49.1%
20-64	55.5%	55.8%	48.1%	50.2%	92.3%	57.2%	0.0%	60.0%	25.5%	47.8%
65+	13.4%	13.8%	17.9%	5.8%	0.0%	7.0%	0.0%	0.0%	3.4%	3.2%
85+	1.7%	1.8%	4.7%	0.3%	0.0%	0.5%	0.0%	0.0%	0.0%	0.3%
D. Racial and Ethnic Composition of Each Age Group										
2000										
0-19	100.0%	96.4%	0.7%	1.9%	0.0%	1.2%	0.0%	0.1%	0.5%	1.0%
20-64	100.0%	97.4%	0.4%	1.5%	0.0%	1.2%	0.0%	0.0%	0.2%	0.6%
65+	100.0%	98.8%	0.2%	0.7%	0.0%	0.5%	0.0%	0.1%	0.0%	0.3%
85+	100.0%	98.8%	0.4%	0.4%	0.0%	0.0%	0.0%	0.4%	0.0%	0.4%
2010										
0-19	100.0%	93.2%	0.5%	3.9%	0.0%	2.2%	0.0%	0.1%	1.6%	2.4%
20-64	100.0%	95.8%	0.4%	2.5%	0.1%	2.0%	0.0%	0.1%	0.3%	1.3%
65+	100.0%	97.8%	0.7%	1.2%	0.0%	1.0%	0.0%	0.0%	0.2%	0.4%
85+	100.0%	97.8%	1.4%	0.5%	0.0%	0.5%	0.0%	0.0%	0.0%	0.3%
E. Population Growth										
2000-2010, Change										
0-19	1,126	876	-1	153	1	83	-2	-4	75	98
20-64	1,951	1,708	11	144	8	122	-3	2	15	88
65+	570	534	14	19	0	18	0	-3	4	3
85+	113	108	4	1	0	2	0	-1	0	0
Total	3,647	3,118	24	316	9	223	-5	-5	94	189
2000-2010, Pct Change										
0-19	20.6%	16.6%	-2.7%	148.5%	0.0%	127.7%	-100.0%	-50.0%	267.9%	171.9%
20-64	19.9%	17.8%	27.5%	97.3%	200.0%	106.1%	-100.0%	50.0%	68.2%	139.7%
65+	25.0%	23.7%	280.0%	126.7%	0.0%	163.6%	0.0%	-100.0%	400.0%	42.9%
85+	44.1%	42.7%	400.0%	100.0%	0.0%	0.0%	0.0%	-100.0%	0.0%	0.0%
Total	20.8%	18.2%	29.3%	118.8%	225.0%	116.8%	-100.0%	-33.3%	184.3%	148.8%

Source: Decennial Census 2010, 2000, American Community Survey 2008-2012

Prepared for the Pennsylvania State Library by The Pennsylvania State Data Center, 9/2014

# Reference Data

## Peters Township Public Library

	Total Population	White, Non- Hispanic	Black, Non- Hispanic	Other, Non- Hispanic	Detail for Other, Non-Hispanic					Hispanic or Latino
					AIAN	Asian	NHOPI	Some Other	Two or More	
								Race	Races	
F. Population by Library-Defined Age Groups, 2010										
0-5	1,540	1,423	8	64	0	35	0	0	29	45
6-10	1,887	1,741	11	81	1	51	0	2	27	54
11-13	1,179	1,094	5	52	0	29	0	0	23	28
14-18	1,863	1,767	12	58	0	33	0	2	23	26
19-32	1,626	1,540	8	52	4	33	0	3	12	26
33-45	3,698	3,491	15	123	7	104	0	1	11	69
46-64	6,571	6,367	28	118	1	100	0	2	15	58
65-84	2,480	2,425	14	32	0	27	0	0	5	9
85+	369	361	5	2	0	2	0	0	0	1
Total	21,213	20,209	106	582	13	414	0	10	145	316
G. Population by 5-Year Age Cohorts, 2010										
0-4	1,224	1,137	7	49	0	27	0	0	22	31
5-9	1,813	1,669	11	83	0	52	0	1	30	50
10-14	2,005	1,861	9	85	1	48	0	1	35	50
15-19	1,543	1,471	9	39	0	21	0	2	16	24
20-24	582	556	3	16	3	11	0	2	0	7
25-29	550	517	4	20	0	15	0	1	4	9
30-34	703	668	2	19	1	11	0	0	7	14
35-39	1,217	1,129	6	51	2	45	0	1	3	31
40-44	1,714	1,624	8	59	3	48	0	0	8	23
45-49	2,096	2,015	8	47	3	38	0	2	4	26
50-54	1,929	1,876	11	26	0	24	0	0	2	16
55-59	1,626	1,588	6	20	0	18	0	0	2	12
60-64	1,362	1,312	3	34	0	27	0	0	7	13
65-69	917	889	5	20	0	16	0	0	4	3
70-74	657	640	5	9	0	9	0	0	0	3
75-79	512	506	3	2	0	1	0	0	1	1
80-84	394	390	1	1	0	1	0	0	0	2
85-89	245	241	1	2	0	2	0	0	0	1
90-94	89	86	3	0	0	0	0	0	0	0
95-99	34	33	1	0	0	0	0	0	0	0
100+	1	1	0	0	0	0	0	0	0	0
Total	21,213	20,209	106	582	13	414	0	10	145	316

Source: Decennial Census 2010, 2000, American Community Survey 2008-2012

Prepared for the Pennsylvania State Library by The Pennsylvania State Data Center, 9/2014

# Reference Data

## Peters Township Public Library

### H. Income Distribution, 2008-2012

Range (in thousands)	Households	Pct of Total
<\$10K	136	1.9%
\$10K to <\$25K	325	4.5%
\$25K to <\$50K	956	13.3%
\$50K to <\$75K	1,236	17.2%
\$75K to <\$100K	975	13.5%
\$100K to <\$150K	1,585	22.0%
\$150K+	1,991	27.6%

### I. Household Type, 2010

Household Type	2000	2000pct	2010	2010pct
Total Households	6,026	100.0%	7,292	100.0%
Family Households	5,089	84.5%	6,079	83.4%
Husband-wife, no children w/children	2,308	38.3%	2,663	36.5%
Female head, no husband, w/ children	160	2.7%	206	2.8%
Male head, no wife, w/ children	49	0.8%	100	1.4%
Without children	2,572	42.7%	3,110	42.6%
Nonfamily households	937	15.5%	1,213	16.6%
Living alone	833	13.8%	1,034	14.2%
Other nonfamily	104	1.7%	179	2.5%

### J. Household Type by Race and Ethnicity, 2008-2012

Household Type	White, NH	Black, NH	Other, NH	Hispanic
Total Households	7,054	34	160	65
Husband wife family	75.2%	64.7%	83.8%	67.7%
Family with male head, no wife	2.6%	0.0%	3.1%	1.5%
family with female head, no husband	5.4%	8.8%	4.4%	18.5%
Living alone	14.4%	23.5%	5.0%	6.2%
Other nonfamily	2.4%	2.9%	3.8%	6.2%

### K. Poverty, 2008-2012

Families	Poverty	PA
All families	1.9%	9.1%
Families w/ related children	3.1%	15.3%
Female householder, no husband present	5.7%	28.8%
Female householder, no husband present, w/ related children	7.9%	39.2%
All people	3.4%	13.1%
Under 18 years	3.8%	18.4%
18 to 64 years	3.2%	12.3%
65 years and over	3.7%	8.4%

### L. Educational Attainment by Race and Ethnicity, 2008-2012

Education Level	White, NH	Black	Other	Hispanic	Total
Population 25 years and over	13,298	63	332	117	13,770
Less than high school	3.9%	12.7%	12%	34.2%	4.1%
High school graduate (includes equivalency)	17.2%	52.4%	16%	0.0%	17.2%
Some college or associates degree	22.5%	34.9%	16%	29.1%	22.5%
Bachelors degree or higher	56.4%	0.0%	56%	36.8%	56.1%

### M. Occupation, 2008-2012

Occupation	Estimate	Percent
Civilian population age 16 years and over	9,843	100.0%
Management, professional, and related occupations	5,253	53.4%
Service occupations	1,115	11.3%
Sales and office occupations	2,583	26.2%
Farming, fishing, and forestry occupations	22	0.2%
Construction, extraction, maintenance, and repair occupations	411	4.2%
Production, transportation, and material moving occupations	459	4.7%

### N. Class of Worker, 2008-2012

Occupation	Estimate	Percent
Civilian population age 16 years and over	9,843	100.0%
Private, for profit, wage and salary employee	6,564	66.7%
Private, not for profit, wage and salary employee	928	9.4%
Private, for profit, wage and salary self-employed in own business	674	6.8%
Government workers	956	9.7%
Self-employed in own not incorporated business	674	6.8%
Unpaid family workers in family business	47	0.5%