

## Demographic Profile Port Carbon Public Library

**Population Growth:** The total population of the Port Carbon Public Library service area decreased by -6.4 percent over the past decade to 1,889; this decline rate was lower than the statewide rate of 3.4 percent.

**Age and Sex:** In 2010, the Port Carbon Public Library service area had a total population of 1,889 - 917 males (48.5 percent) and 972 females (51.5 percent). The age structure of the population in 2010 was as follows: 24.0 percent of the population was under 20 years old, 58.0 percent was 20 to 64 years old and 17.9 percent was 65 years or older.

**Race and Ethnicity:** For people reporting one race alone, not of Hispanic ethnicity, 95.1 percent were White; .7 percent were Black or African American; 2.0 percent were Other Race Alone.<sup>1</sup> A total of 41 or 2.2 percent of the population were Hispanic.<sup>2</sup>

**Households:** In 2010, there were 790 households in the Port Carbon Public Library service area. The average household size was 2.39 people. Families made up 66.2 percent of the households. This figure includes both families with (26.7 percent) and without (39.5 percent) children. Of families with children less than 18 years old, 14.6 percent were married-couple families, 8.5 percent were female householder families with no husband present, and the remaining (3.7 percent) were male-headed households with no wife present.

**Education:** The educational attainment of the population 25 years and over was lower in the Port Carbon Public Library service area than in Pennsylvania. During the period 2008-2012, 7.0 percent of residents had earned a Bachelor's degree or higher, compared with 27.0 percent statewide. A total of 175 or 12.6 percent had not completed high school, compared with 11.7 percent for the commonwealth as a whole.

**Income and Poverty:** Households with incomes of \$25,000 to \$49,999 (32.4 percent) made up the largest percent of households in the Port Carbon Public Library service area in 2008-2012. For comparison, 24.4 percent of commonwealth households were in this range during the period.

In 2008-2012, the overall poverty rate for the Port Carbon Public Library service area was lower than Pennsylvania (9.7 percent compared to 13.1 percent). The poverty rate for the population under 18 years of age was 8.0 percent, compared with 12.2 percent of people 18 to 64 years and 2.7 percent for those aged 65 years and over. A total of 27 or 5.1 percent of all families had incomes below poverty level. In 2008-2012, 10.0 percent of families with related children and 32.0 percent of families with a female householder and no husband with related children present had incomes below the poverty level.

**Class of Worker and Occupation:** In 2008-2012, 85.1 percent of the workforce was private wage and salary workers; 13.5 percent were federal, state, or local government workers; and 1.4 percent were self-employed in their own (not incorporated) business.

The top occupation group for the civilian employed population 16 years and over in the Port Carbon Public Library service area in 2008-2012 was Sales and office (31.2 percent).

---

<sup>1</sup> Other race includes those who identified themselves as American Indian/Alaska Native, Asian, Native Hawaiian/Other Pacific Islander, Some Other Race and Two or More Races on the 2010 Census form.

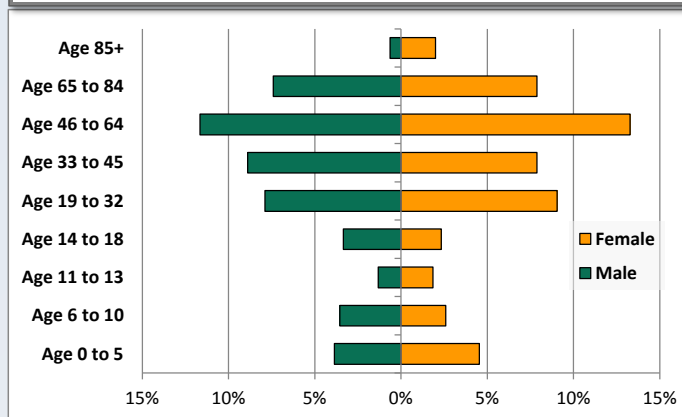
<sup>2</sup> People of Hispanic origin may be of any race.

# Demographic Profile

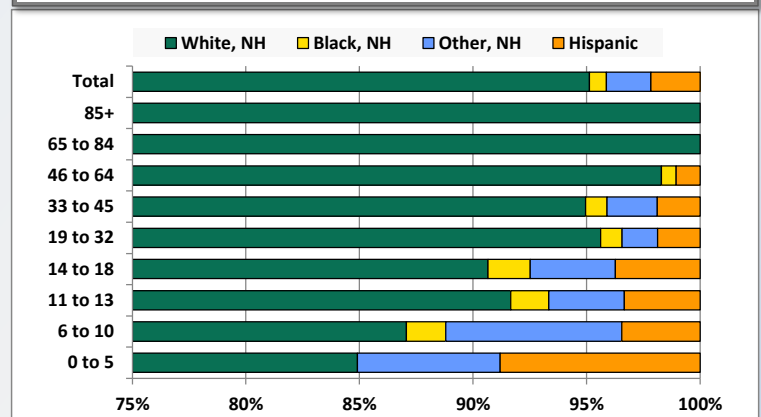
Port Carbon Public Library

Key Indicators		
	2000	2010
<b>Population Growth</b>		
Total Population	2,019	1,889
10-Year Growth	N/A	-6.4%
<b>Diversity</b>		
White Alone, Non-Hispanic	98.6%	95.1%
Black Alone, Non-Hispanic	0.5%	0.7%
Other Race Alone, Non-Hispanic	0.3%	2.0%
Percent Hispanic	0.5%	2.2%
<b>Aging</b>		
Percent 65 Years and Over	20.7%	17.9%
<b>Households</b>		
Percent Married Couple with Own Children	17.6%	14.6%
Percent Living Alone	28.8%	28.6%

Population by Library-Defined Age Group, 2010



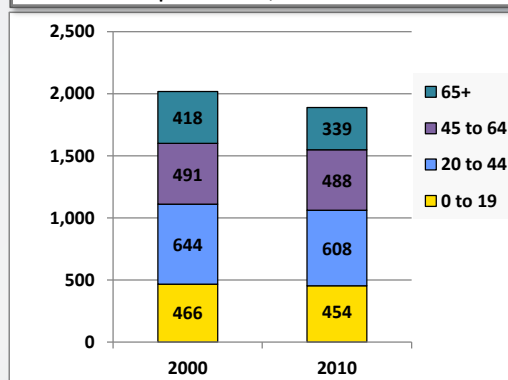
Race/Ethnicity by Library-Defined Age Group, 2010



Population Growth by Library-Defined Age Group, 2000 to 2010

Age Group	2010	Change	
		Numeric	Percent
Total	1,889	-130	-6.4%
85+	50	14	38.9%
65 to 84	289	-93	-24.3%
46 to 64	471	13	2.8%
33 to 45	317	-49	-13.4%
19 to 32	320	-17	-5.0%
14 to 18	107	-26	-19.5%
11 to 13	60	-18	-23.1%
6 to 10	116	3	2.7%
0 to 5	159	43	37.1%

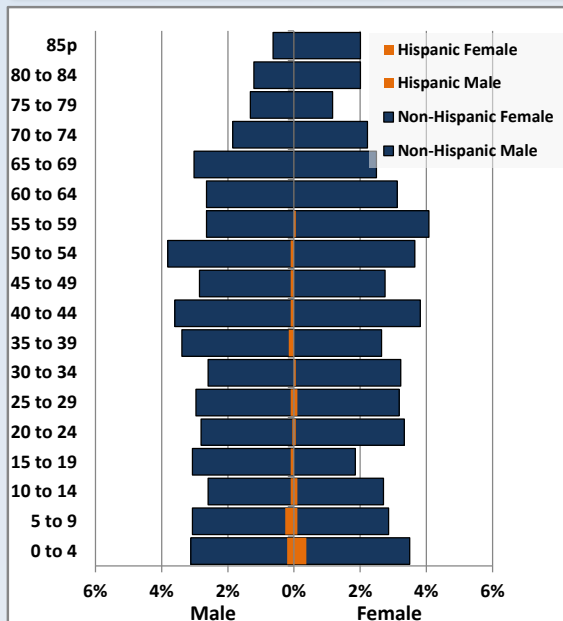
Population Total, 2000 and 2010



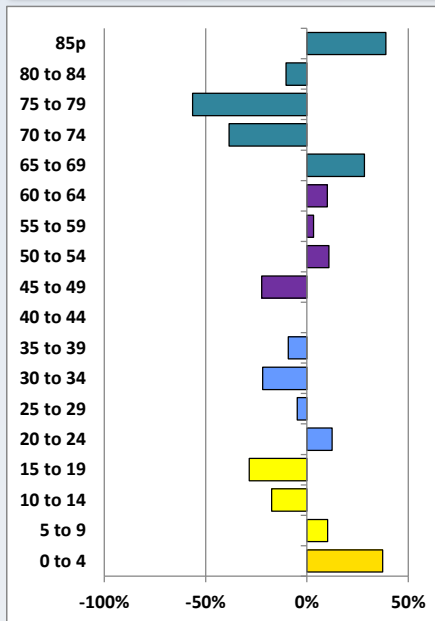
# Demographic Profile

Port Carbon Public Library

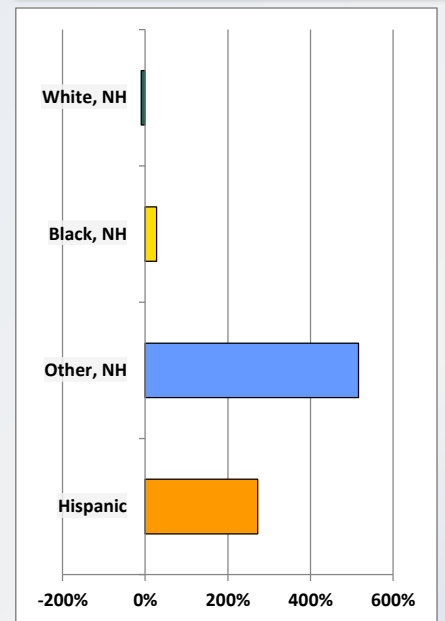
Population by 5-Year Age Cohorts



Pop Change by Age, 2000 to 2010

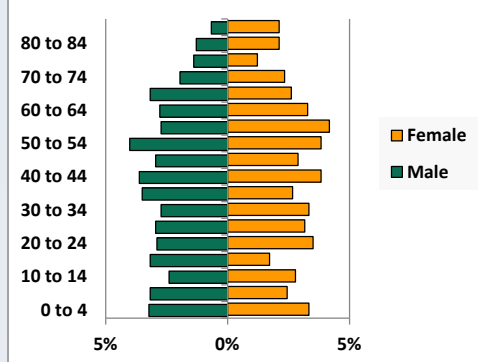


Pop Change by Race/Ethnicity, 2000 to 2010

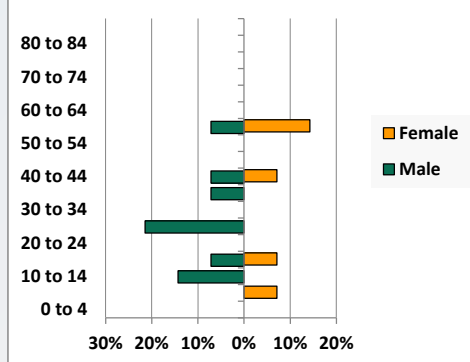


Population by Age, Race and Ethnicity 2010

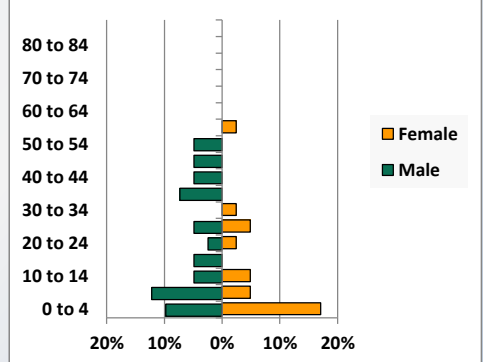
White, Not Hispanic



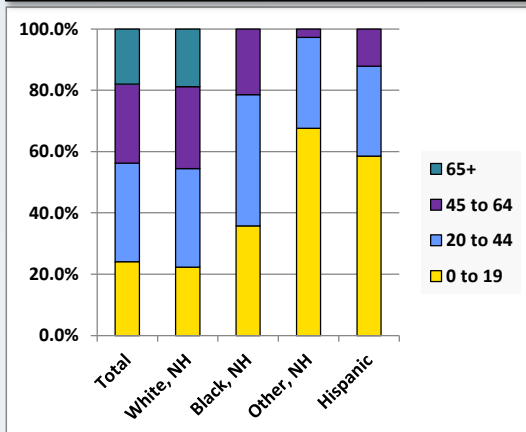
Black, Non-Hispanic



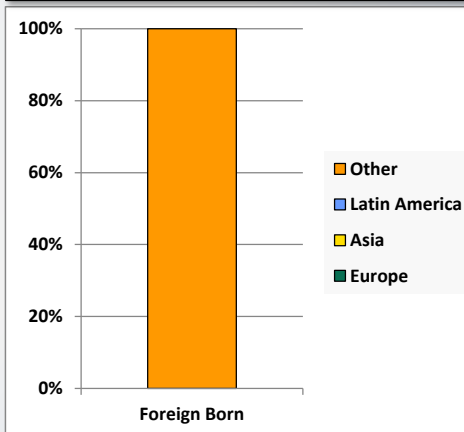
Hispanic



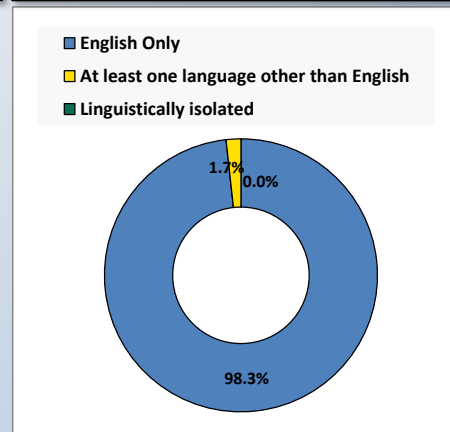
Age by Race and Ethnicity, 2010



Foreign Born, 2010



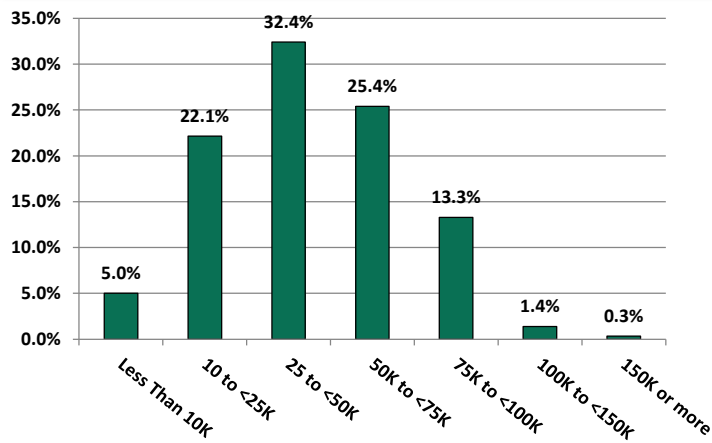
Household Language, 2010



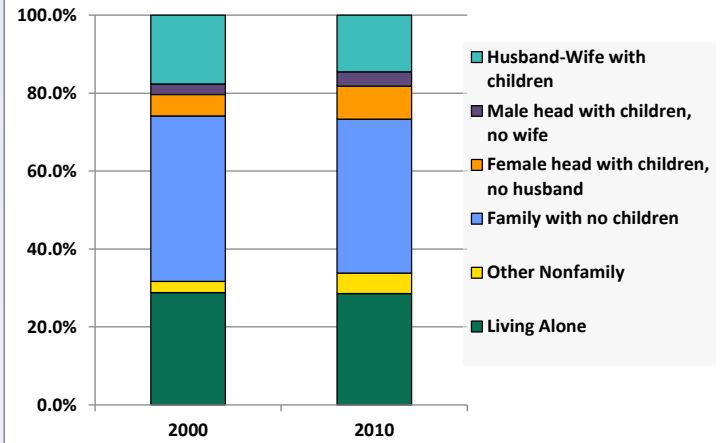
# Demographic Profile

Port Carbon Public Library

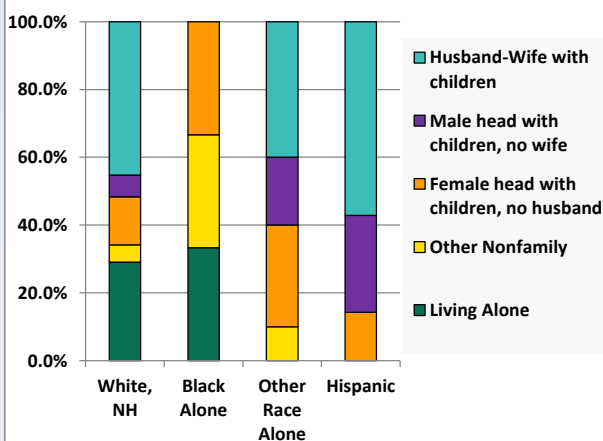
Household Income Distribution, 2008-2012



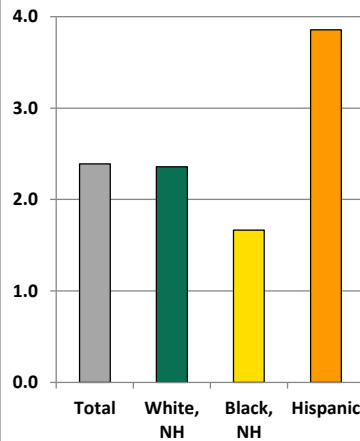
Household Type, 2000 and 2010



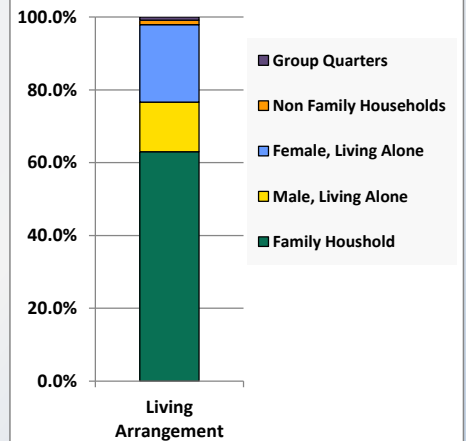
Household Type by Race/Ethnicity, 2010



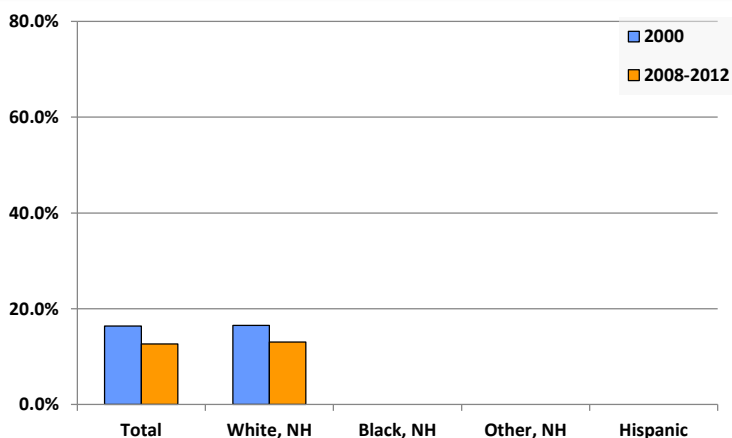
Average Household Size, 2010



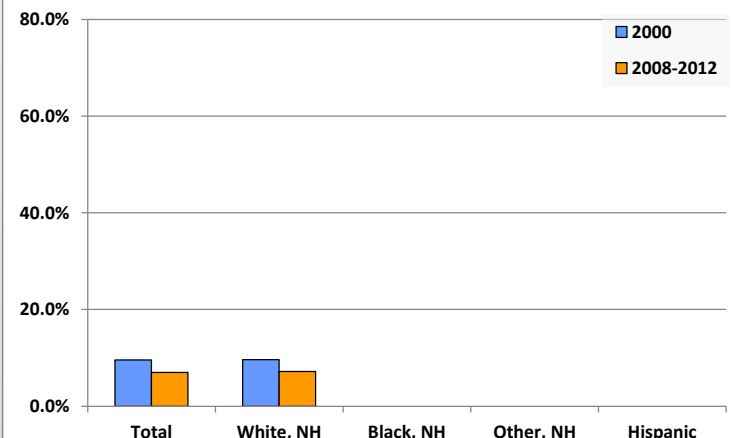
Living Arrangements 65+, 2008-2012



Percent of Adults that Did Not Complete High School



Percent of Adults Who Attained a Bachelor's Degree or Higher



# Reference Data

## Port Carbon Public Library

	Total Population	White, Non- Hispanic	Black, Non- Hispanic	Other, Non- Hispanic	Detail for Other, Non-Hispanic					Hispanic or Latino
					AIAN	Asian	NHOPI	Some Other Race	Two or More Races	
A. Total Population										
2000 Total	2,019	1,991	11	6	1	1	1	0	3	11
2000 pct of Total	100.0%	98.6%	0.5%	0.3%	0.0%	0.0%	0.0%	0.0%	0.1%	0.5%
2010 Total	1,889	1,797	14	37	0	8	0	0	29	41
2010 pct of Total	100.0%	95.1%	0.7%	2.0%	0.0%	0.4%	0.0%	0.0%	1.5%	2.2%
B. Population by Major Age Groups by Race and Ethnicity										
2000										
0-19	466	451	6	4	1	0	1	0	2	5
20-64	1,135	1,122	5	2	0	1	0	0	1	6
65+	418	418	0	0	0	0	0	0	0	0
85+	36	36	0	0	0	0	0	0	0	0
2010										
0-19	454	400	5	25	0	3	0	0	22	24
20-64	1,096	1,058	9	12	0	5	0	0	7	17
65+	339	339	0	0	0	0	0	0	0	0
85+	50	50	0	0	0	0	0	0	0	0
C. Age Mix for Each Racial and Ethnic Group										
2000										
0-19	23.1%	22.7%	54.5%	66.7%	100.0%	0.0%	100.0%	0.0%	66.7%	45.5%
20-64	56.2%	56.4%	45.5%	33.3%	0.0%	100.0%	0.0%	0.0%	33.3%	54.5%
65+	20.7%	21.0%	0.0%	0.0%	0.0%	0.0%	0.0%	0.0%	0.0%	0.0%
85+	1.8%	1.8%	0.0%	0.0%	0.0%	0.0%	0.0%	0.0%	0.0%	0.0%
2010										
0-19	24.0%	22.3%	35.7%	67.6%	0.0%	37.5%	0.0%	0.0%	75.9%	58.5%
20-64	58.0%	58.9%	64.3%	32.4%	0.0%	62.5%	0.0%	0.0%	24.1%	41.5%
65+	17.9%	18.9%	0.0%	0.0%	0.0%	0.0%	0.0%	0.0%	0.0%	0.0%
85+	2.6%	2.8%	0.0%	0.0%	0.0%	0.0%	0.0%	0.0%	0.0%	0.0%
D. Racial and Ethnic Composition of Each Age Group										
2000										
0-19	100.0%	96.8%	1.3%	0.9%	0.2%	0.0%	0.2%	0.0%	0.4%	1.1%
20-64	100.0%	98.9%	0.4%	0.2%	0.0%	0.1%	0.0%	0.0%	0.1%	0.5%
65+	100.0%	100.0%	0.0%	0.0%	0.0%	0.0%	0.0%	0.0%	0.0%	0.0%
85+	100.0%	100.0%	0.0%	0.0%	0.0%	0.0%	0.0%	0.0%	0.0%	0.0%
2010										
0-19	100.0%	88.1%	1.1%	5.5%	0.0%	0.7%	0.0%	0.0%	4.8%	5.3%
20-64	100.0%	96.5%	0.8%	1.1%	0.0%	0.5%	0.0%	0.0%	0.6%	1.6%
65+	100.0%	100.0%	0.0%	0.0%	0.0%	0.0%	0.0%	0.0%	0.0%	0.0%
85+	100.0%	100.0%	0.0%	0.0%	0.0%	0.0%	0.0%	0.0%	0.0%	0.0%
E. Population Growth										
2000-2010, Change										
0-19	-12	-51	-1	21	-1	3	-1	0	20	19
20-64	-39	-64	4	10	0	4	0	0	6	11
65+	-79	-79	0	0	0	0	0	0	0	0
85+	14	14	0	0	0	0	0	0	0	0
Total	-130	-194	3	31	-1	7	-1	0	26	30
2000-2010, Pct Change										
0-19	-2.6%	-11.3%	-16.7%	525.0%	-100.0%	0.0%	-100.0%	0.0%	1000.0%	380.0%
20-64	-3.4%	-5.7%	80.0%	500.0%	0.0%	400.0%	0.0%	0.0%	600.0%	183.3%
65+	-18.9%	-18.9%	0.0%	0.0%	0.0%	0.0%	0.0%	0.0%	0.0%	0.0%
85+	38.9%	38.9%	0.0%	0.0%	0.0%	0.0%	0.0%	0.0%	0.0%	0.0%
Total	-6.4%	-9.7%	27.3%	516.7%	-100.0%	700.0%	-100.0%	0.0%	866.7%	272.7%

Source: Decennial Census 2010, 2000, American Community Survey 2008-2012

Prepared for the Pennsylvania State Library by The Pennsylvania State Data Center, 9/2014

# Reference Data

## Port Carbon Public Library

	Total Population	White, Non- Hispanic	Black, Non- Hispanic	Other, Non- Hispanic	Detail for Other, Non-Hispanic					Hispanic or Latino
					AIAN	Asian	NHOPI	Some Other	Two or More	
								Race	Races	
F. Population by Library-Defined Age Groups, 2010										
0-5	159	135	0	10	0	2	0	0	8	14
6-10	116	101	2	9	0	1	0	0	8	4
11-13	60	55	1	2	0	0	0	0	2	2
14-18	107	97	2	4	0	0	0	0	4	4
19-32	320	306	3	5	0	1	0	0	4	6
33-45	317	301	3	7	0	4	0	0	3	6
46-64	471	463	3	0	0	0	0	0	0	5
65-84	289	289	0	0	0	0	0	0	0	0
85+	50	50	0	0	0	0	0	0	0	0
Total	1,889	1,797	14	37	0	8	0	0	29	41
G. Population by 5-Year Age Cohorts, 2010										
0-4	136	118	0	7	0	1	0	0	6	11
5-9	119	101	1	10	0	2	0	0	8	7
10-14	104	93	2	5	0	0	0	0	5	4
15-19	95	88	2	3	0	0	0	0	3	2
20-24	118	115	0	1	0	0	0	0	1	2
25-29	120	110	3	3	0	0	0	0	3	4
30-34	111	109	0	1	0	1	0	0	0	1
35-39	117	111	1	2	0	2	0	0	0	3
40-44	142	134	2	4	0	2	0	0	2	2
45-49	108	105	0	1	0	0	0	0	1	2
50-54	143	141	0	0	0	0	0	0	0	2
55-59	128	124	3	0	0	0	0	0	0	1
60-64	109	109	0	0	0	0	0	0	0	0
65-69	104	104	0	0	0	0	0	0	0	0
70-74	77	77	0	0	0	0	0	0	0	0
75-79	47	47	0	0	0	0	0	0	0	0
80-84	61	61	0	0	0	0	0	0	0	0
85-89	40	40	0	0	0	0	0	0	0	0
90-94	8	8	0	0	0	0	0	0	0	0
95-99	2	2	0	0	0	0	0	0	0	0
100+	0	0	0	0	0	0	0	0	0	0
Total	1,889	1,797	14	37	0	8	0	0	29	41

Source: Decennial Census 2010, 2000, American Community Survey 2008-2012

Prepared for the Pennsylvania State Library by The Pennsylvania State Data Center, 9/2014

# Reference Data

## Port Carbon Public Library

### H. Income Distribution, 2008-2012

Range (in thousands)	Households	Pct of Total
<\$10K	43	5.0%
\$10K to <\$25K	190	22.1%
\$25K to <\$50K	278	32.4%
\$50K to <\$75K	218	25.4%
\$75K to <\$100K	114	13.3%
\$100K to <\$150K	12	1.4%
\$150K+	3	0.3%

### I. Household Type, 2010

Household Type	2000	2000pct	2010	2010pct
Total Households	846	100.0%	790	100.0%
Family Households	578	68.3%	523	66.2%
Husband-wife, no children w/children	149	17.6%	115	14.6%
Female head, no husband, w/ children	47	5.6%	67	8.5%
Male head, no wife, w/ children	23	2.7%	29	3.7%
Without children	359	42.4%	312	39.5%
Nonfamily households	268	31.7%	267	33.8%
Living alone	244	28.8%	226	28.6%
Other nonfamily	24	2.8%	41	5.2%

### J. Household Type by Race and Ethnicity, 2008-2012

Household Type	White, NH	Black, NH	Other, NH	Hispanic
Total Households	773	3	10	7
Husband wife family	45.3%	0.0%	40.0%	57.1%
Family with male head, no wife	6.3%	0.0%	20.0%	28.6%
family with female head, no husband	14.2%	33.3%	30.0%	14.3%
Living alone	29.1%	33.3%	0.0%	0.0%
Other nonfamily	5.0%	33.3%	10.0%	0.0%

### K. Poverty, 2008-2012

Families	Poverty	PA
All families	5.1%	9.1%
Families w/ related children	10.0%	15.3%
Female householder, no husband present	21.8%	28.8%
Female householder, no husband present, w/ related children	32.0%	39.2%
All people	9.7%	13.1%
Under 18 years	8.0%	18.4%
18 to 64 years	12.2%	12.3%
65 years and over	2.7%	8.4%

### L. Educational Attainment by Race and Ethnicity, 2008-2012

Education Level	White, NH	Black	Other	Hispanic	Total
Population 25 years and over	1,344	33	8	0	1,385
Less than high school	13.0%	0.0%	0%	0.0%	12.6%
High school graduate (includes equivalency	52.3%	93.9%	0%	0.0%	53.0%
Some college or associates degree	27.5%	6.1%	100%	0.0%	27.4%
Bachelors degree or higher	7.2%	0.0%	0%	0.0%	7.0%

### M. Occupation, 2008-2012

Occupation	Estimate	Percent
Civilian population age 16 years and over	934	100.0%
Management, professional, and related occupations	191	20.4%
Service occupations	151	16.2%
Sales and office occupations	291	31.2%
Farming, fishing, and forestry occupations	4	0.4%
Construction, extraction, maintenance, and repair occupations	93	10.0%
Production, transportation, and material moving occupations	204	21.8%

### N. Class of Worker, 2008-2012

Occupation	Estimate	Percent
Civilian population age 16 years and over	934	100.0%
Private, for profit, wage and salary employee	727	77.8%
Private, not for profit, wage and salary employee	45	4.8%
Private, for profit, wage and salary self-employed in own business	23	2.5%
Government workers	126	13.5%
Self-employed in own not incorporated business	13	1.4%
Unpaid family workers in family business	0	0.0%