

## Demographic Profile Portage Public Library

**Population Growth:** The total population of the Portage Public Library service area decreased by -7.0 percent over the past decade to 2,638; this decline rate was lower than the statewide rate of 3.4 percent.

**Age and Sex:** In 2010, the Portage Public Library service area had a total population of 2,638 - 1,264 males (47.9 percent) and 1,374 females (52.1 percent). The age structure of the population in 2010 was as follows: 23.5 percent of the population was under 20 years old, 56.6 percent was 20 to 64 years old and 19.8 percent was 65 years or older.

**Race and Ethnicity:** For people reporting one race alone, not of Hispanic ethnicity, 98.0 percent were White; .3 percent were Black or African American; 1.2 percent were Other Race Alone.<sup>1</sup> A total of 14 or .5 percent of the population were Hispanic.<sup>2</sup>

**Households:** In 2010, there were 1,161 households in the Portage Public Library service area. The average household size was 2.25 people. Families made up 60.5 percent of the households. This figure includes both families with (24.6 percent) and without (35.8 percent) children. Of families with children less than 18 years old, 13.6 percent were married-couple families, 8.2 percent were female householder families with no husband present, and the remaining (2.8 percent) were male-headed households with no wife present.

**Education:** The educational attainment of the population 25 years and over was lower in the Portage Public Library service area than in Pennsylvania. During the period 2008-2012, 14.7 percent of residents had earned a Bachelor's degree or higher, compared with 27.0 percent statewide. A total of 214 or 11.9 percent had not completed high school, compared with 11.7 percent for the commonwealth as a whole.

**Income and Poverty:** Households with incomes of less than \$25,000 (35.7 percent) made up the largest percent of households in the Portage Public Library service area in 2008-2012. For comparison, 23.6 percent of commonwealth households were in this range during the period.

In 2008-2012, the overall poverty rate for the Portage Public Library service area was higher than Pennsylvania (17.7 percent compared to 13.1 percent). The poverty rate for the population under 18 years of age was 27.3 percent, compared with 15.9 percent of people 18 to 64 years and 10.5 percent for those aged 65 years and over. A total of 106 or 14.2 percent of all families had incomes below poverty level. In 2008-2012, 25.7 percent of families with related children and 49.0 percent of families with a female householder and no husband with related children present had incomes below the poverty level.

**Class of Worker and Occupation:** In 2008-2012, 74.6 percent of the workforce was private wage and salary workers; 18.6 percent were federal, state, or local government workers; and 6.3 percent were self-employed in their own (not incorporated) business.

The top occupation group for the civilian employed population 16 years and over in the Portage Public Library service area in 2008-2012 was Service-related (31.5 percent).

---

<sup>1</sup> Other race includes those who identified themselves as American Indian/Alaska Native, Asian, Native Hawaiian/Other Pacific Islander, Some Other Race and Two or More Races on the 2010 Census form.

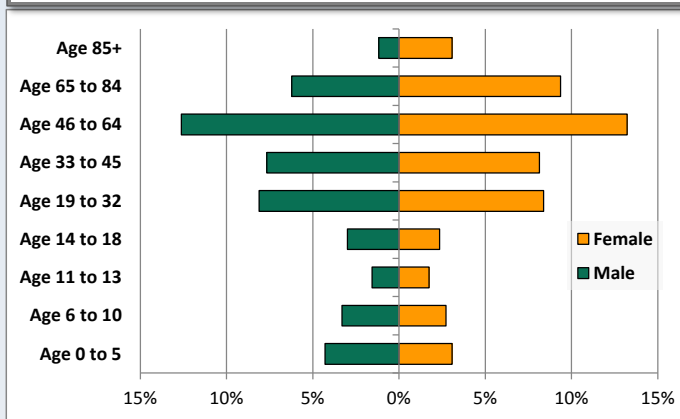
<sup>2</sup> People of Hispanic origin may be of any race.

# Demographic Profile

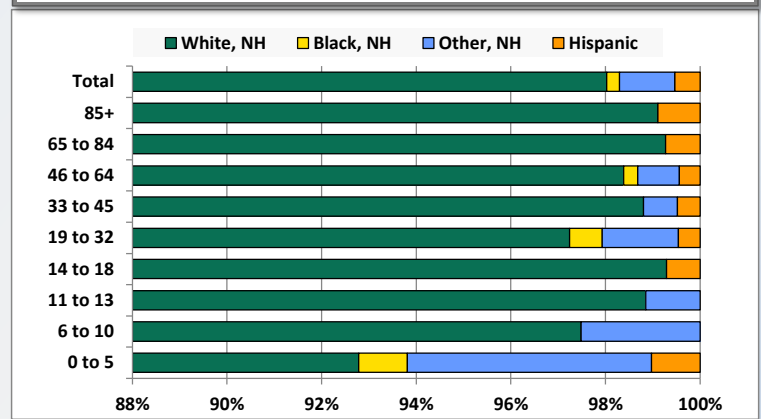
Portage Public Library

Key Indicators		
	2000	2010
<b>Population Growth</b>		
Total Population	2,837	2,638
10-Year Growth	N/A	-7.0%
<b>Diversity</b>		
White Alone, Non-Hispanic	99.2%	98.0%
Black Alone, Non-Hispanic	0.1%	0.3%
Other Race Alone, Non-Hispanic	0.2%	1.2%
Percent Hispanic	0.5%	0.5%
<b>Aging</b>		
Percent 65 Years and Over	21.6%	19.8%
<b>Households</b>		
Percent Married Couple with Own Children	17.0%	13.6%
Percent Living Alone	35.1%	34.1%

Population by Library-Defined Age Group, 2010



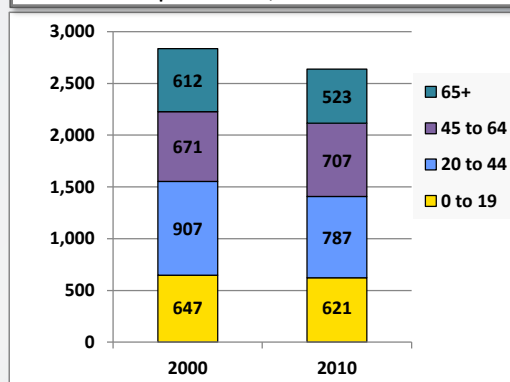
Race/Ethnicity by Library-Defined Age Group, 2010



Population Growth by Library-Defined Age Group, 2000 to 2010

Age Group	2010	Change	
		Numeric	Percent
Total	2,638	-199	-7.0%
85+	112	39	53.4%
65 to 84	411	-128	-23.7%
46 to 64	682	54	8.6%
33 to 45	417	-74	-15.1%
19 to 32	435	-44	-9.2%
14 to 18	141	-34	-19.4%
11 to 13	87	-19	-17.9%
6 to 10	159	-1	-0.6%
0 to 5	194	8	4.3%

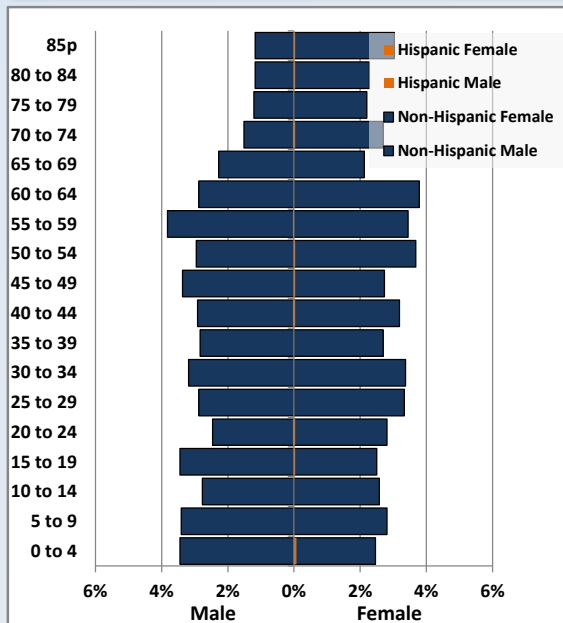
Population Total, 2000 and 2010



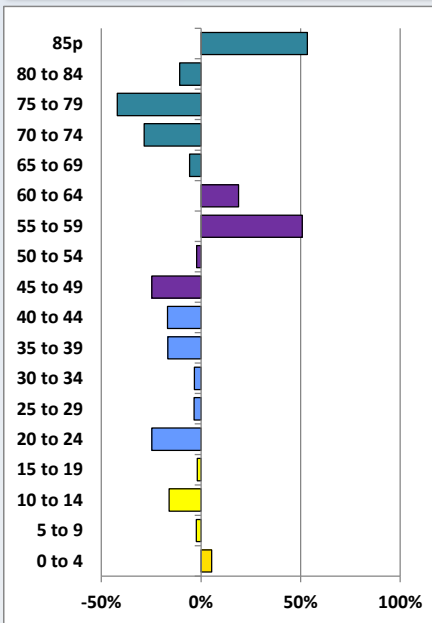
# Demographic Profile

Portage Public Library

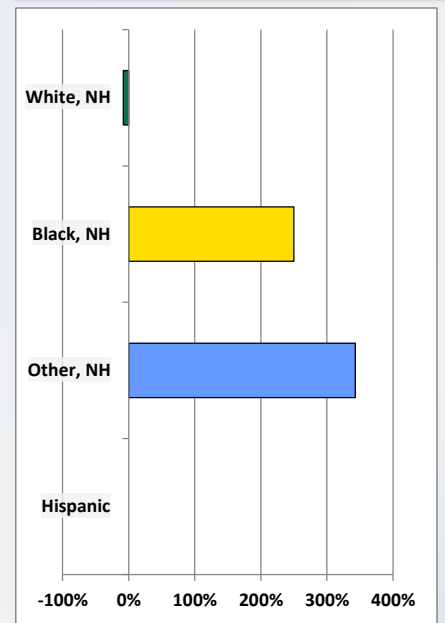
Population by 5-Year Age Cohorts



Pop Change by Age, 2000 to 2010

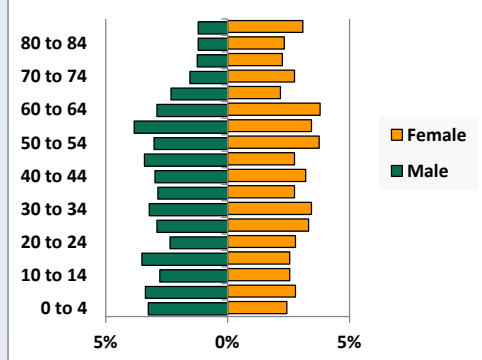


Pop Change by Race/Ethnicity, 2000 to 2010

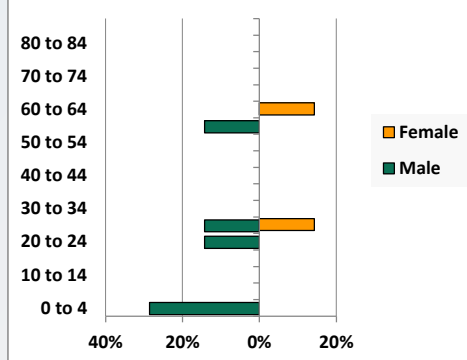


Population by Age, Race and Ethnicity 2010

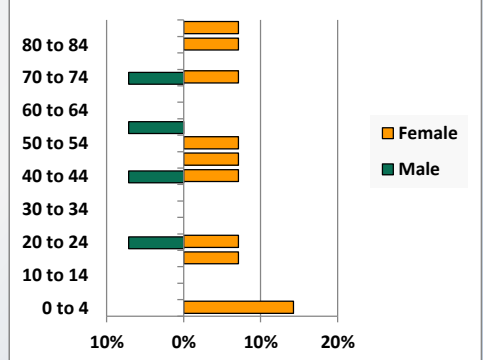
White, Not Hispanic



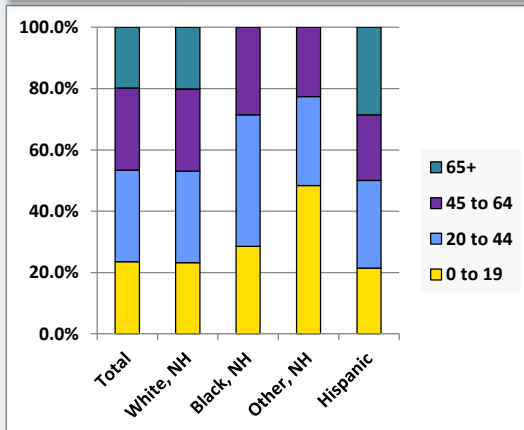
Black, Non-Hispanic



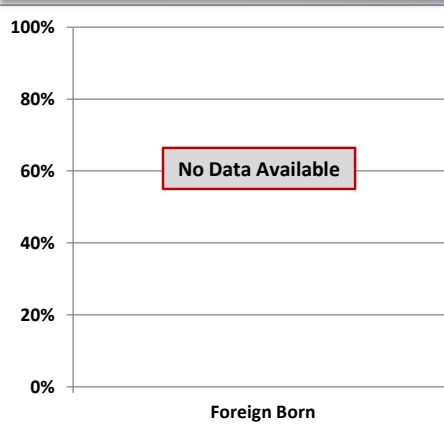
Hispanic



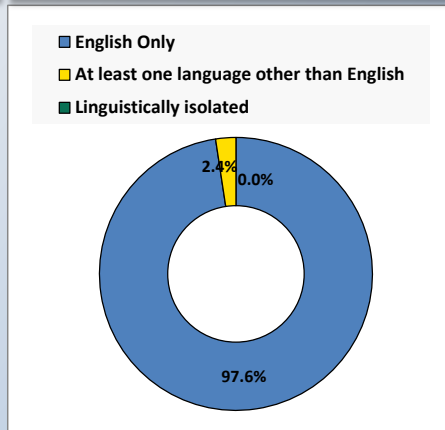
Age by Race and Ethnicity, 2010



Foreign Born, 2010



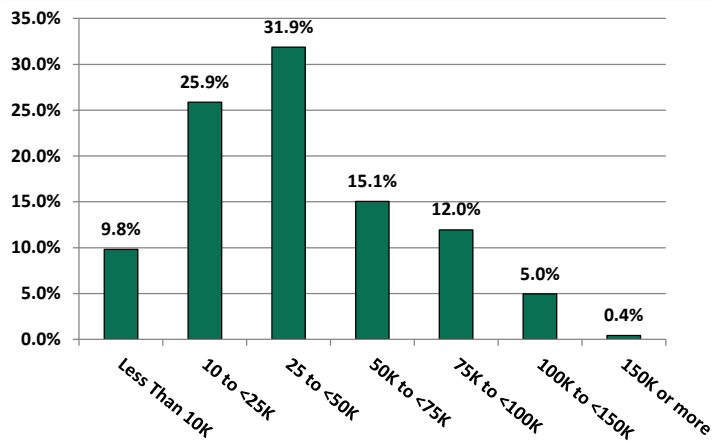
Household Language, 2010



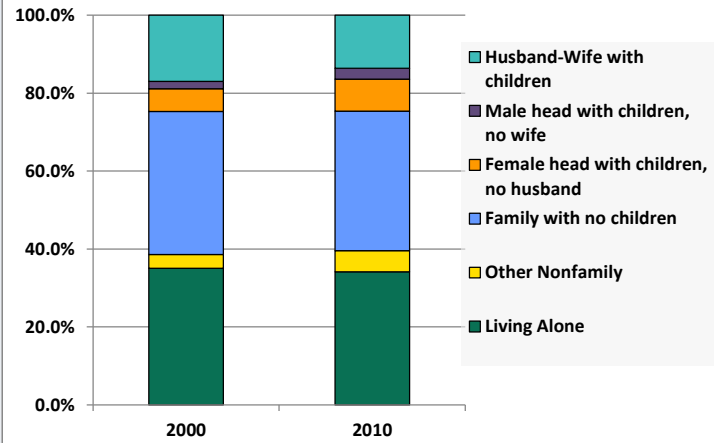
# Demographic Profile

Portage Public Library

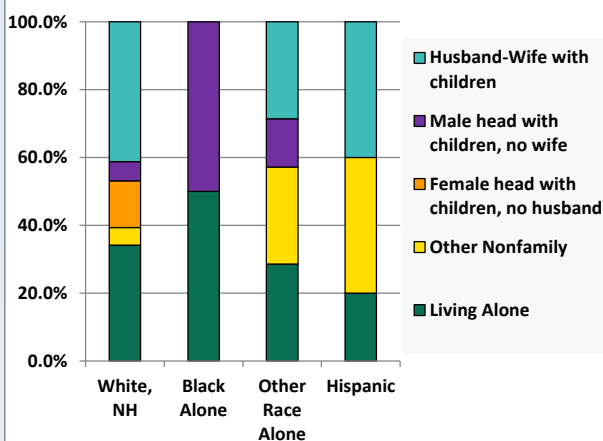
Household Income Distribution, 2008-2012



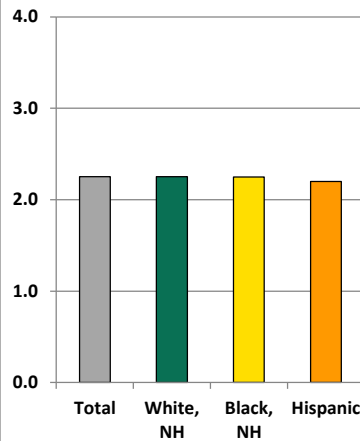
Household Type, 2000 and 2010



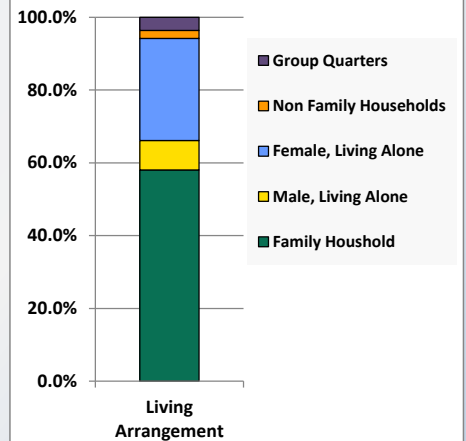
Household Type by Race/Ethnicity, 2010



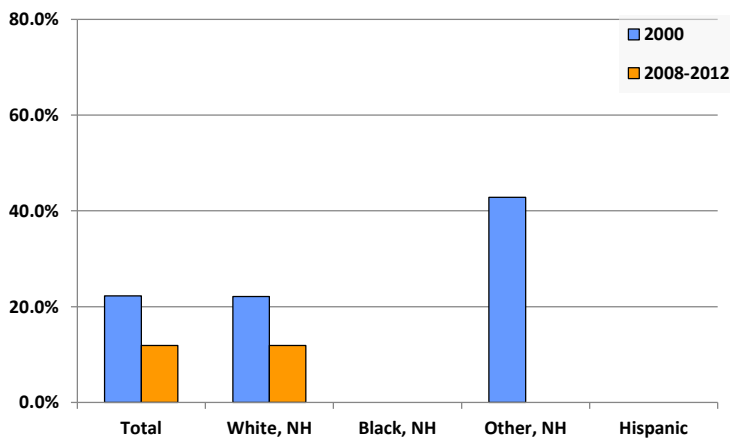
Average Household Size, 2010



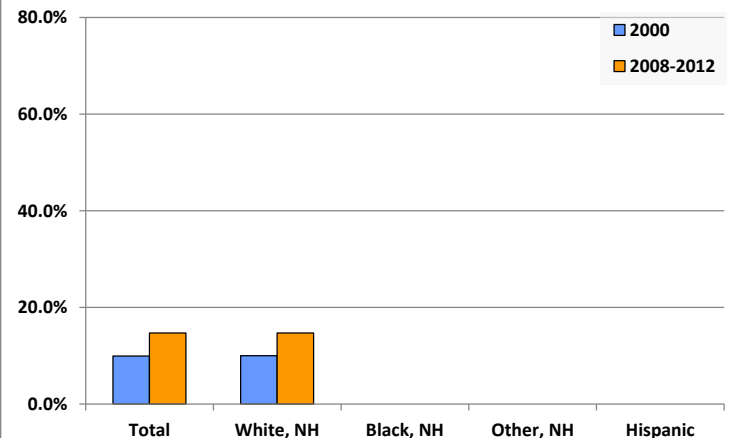
Living Arrangements 65+, 2008-2012



Percent of Adults that Did Not Complete High School



Percent of Adults Who Attained a Bachelor's Degree or Higher



# Reference Data

## Portage Public Library

	Total Population	White, Non- Hispanic	Black, Non- Hispanic	Other, Non- Hispanic	Detail for Other, Non-Hispanic					Hispanic or Latino
					AIAN	Asian	NHOPI	Some Other Race	Two or More Races	
A. Total Population										
2000 Total	2,837	2,814	2	7	1	2	0	0	4	14
2000 pct of Total	100.0%	99.2%	0.1%	0.2%	0.0%	0.1%	0.0%	0.0%	0.1%	0.5%
2010 Total	2,638	2,586	7	31	2	1	0	1	27	14
2010 pct of Total	100.0%	98.0%	0.3%	1.2%	0.1%	0.0%	0.0%	0.0%	1.0%	0.5%
B. Population by Major Age Groups by Race and Ethnicity										
2000										
0-19	647	634	1	2	0	0	0	0	2	10
20-64	1,578	1,569	1	4	1	2	0	0	1	4
65+	612	611	0	1	0	0	0	0	1	0
85+	73	73	0	0	0	0	0	0	0	0
2010										
0-19	621	601	2	15	0	0	0	0	15	3
20-64	1,494	1,466	5	16	2	1	0	1	12	7
65+	523	519	0	0	0	0	0	0	0	4
85+	112	111	0	0	0	0	0	0	0	1
C. Age Mix for Each Racial and Ethnic Group										
2000										
0-19	22.8%	22.5%	50.0%	28.6%	0.0%	0.0%	0.0%	0.0%	50.0%	71.4%
20-64	55.6%	55.8%	50.0%	57.1%	100.0%	100.0%	0.0%	0.0%	25.0%	28.6%
65+	21.6%	21.7%	0.0%	14.3%	0.0%	0.0%	0.0%	0.0%	25.0%	0.0%
85+	2.6%	2.6%	0.0%	0.0%	0.0%	0.0%	0.0%	0.0%	0.0%	0.0%
2010										
0-19	23.5%	23.2%	28.6%	48.4%	0.0%	0.0%	0.0%	0.0%	55.6%	21.4%
20-64	56.6%	56.7%	71.4%	51.6%	100.0%	100.0%	0.0%	100.0%	44.4%	50.0%
65+	19.8%	20.1%	0.0%	0.0%	0.0%	0.0%	0.0%	0.0%	0.0%	28.6%
85+	4.2%	4.3%	0.0%	0.0%	0.0%	0.0%	0.0%	0.0%	0.0%	7.1%
D. Racial and Ethnic Composition of Each Age Group										
2000										
0-19	100.0%	98.0%	0.2%	0.3%	0.0%	0.0%	0.0%	0.0%	0.3%	1.5%
20-64	100.0%	99.4%	0.1%	0.3%	0.1%	0.1%	0.0%	0.0%	0.1%	0.3%
65+	100.0%	99.8%	0.0%	0.2%	0.0%	0.0%	0.0%	0.0%	0.2%	0.0%
85+	100.0%	100.0%	0.0%	0.0%	0.0%	0.0%	0.0%	0.0%	0.0%	0.0%
2010										
0-19	100.0%	96.8%	0.3%	2.4%	0.0%	0.0%	0.0%	0.0%	2.4%	0.5%
20-64	100.0%	98.1%	0.3%	1.1%	0.1%	0.1%	0.0%	0.1%	0.8%	0.5%
65+	100.0%	99.2%	0.0%	0.0%	0.0%	0.0%	0.0%	0.0%	0.0%	0.8%
85+	100.0%	99.1%	0.0%	0.0%	0.0%	0.0%	0.0%	0.0%	0.0%	0.9%
E. Population Growth										
2000-2010, Change										
0-19	-26	-33	1	13	0	0	0	0	13	-7
20-64	-84	-103	4	12	1	-1	0	1	11	3
65+	-89	-92	0	-1	0	0	0	0	-1	4
85+	39	38	0	0	0	0	0	0	0	1
Total	-199	-228	5	24	1	-1	0	1	23	0
2000-2010, Pct Change										
0-19	-4.0%	-5.2%	100.0%	650.0%	0.0%	0.0%	0.0%	0.0%	650.0%	-70.0%
20-64	-5.3%	-6.6%	400.0%	300.0%	100.0%	-50.0%	0.0%	0.0%	1100.0%	75.0%
65+	-14.5%	-15.1%	0.0%	-100.0%	0.0%	0.0%	0.0%	0.0%	-100.0%	0.0%
85+	53.4%	52.1%	0.0%	0.0%	0.0%	0.0%	0.0%	0.0%	0.0%	0.0%
Total	-7.0%	-8.1%	250.0%	342.9%	100.0%	-50.0%	0.0%	0.0%	575.0%	0.0%

# Reference Data

## Portage Public Library

	Total Population	White, Non- Hispanic	Black, Non- Hispanic	Other, Non- Hispanic	Detail for Other, Non-Hispanic					Hispanic or Latino	
					AIAN	Asian	NHOPI	Some Other	Two or More		
								Race	Races		
F. Population by Library-Defined Age Groups, 2010											
0-5	194	180	2	10	0	0	0	0	10	2	
6-10	159	155	0	4	0	0	0	0	4	0	
11-13	87	86	0	1	0	0	0	0	1	0	
14-18	141	140	0	0	0	0	0	0	0	1	
19-32	435	423	3	7	1	0	0	0	6	2	
33-45	417	412	0	3	0	0	0	0	3	2	
46-64	682	671	2	6	1	1	0	1	3	3	
65-84	411	408	0	0	0	0	0	0	0	3	
85+	112	111	0	0	0	0	0	0	0	1	
Total	2,638	2,586	7	31	2	1	0	1	27	14	
G. Population by 5-Year Age Cohorts, 2010											
0-4	158	147	2	7	0	0	0	0	7	2	
5-9	164	159	0	5	0	0	0	0	5	0	
10-14	141	138	0	3	0	0	0	0	3	0	
15-19	158	157	0	0	0	0	0	0	0	1	
20-24	141	133	1	5	1	0	0	0	4	2	
25-29	164	161	2	1	0	0	0	0	1	0	
30-34	173	172	0	1	0	0	0	0	1	0	
35-39	146	145	0	1	0	0	0	0	1	0	
40-44	163	160	0	1	0	0	0	0	1	2	
45-49	162	159	0	2	0	0	0	0	2	1	
50-54	176	175	0	0	0	0	0	0	0	1	
55-59	193	188	1	3	1	1	0	1	0	1	
60-64	176	173	1	2	0	0	0	0	2	0	
65-69	116	116	0	0	0	0	0	0	0	0	
70-74	113	111	0	0	0	0	0	0	0	2	
75-79	90	90	0	0	0	0	0	0	0	0	
80-84	92	91	0	0	0	0	0	0	0	1	
85-89	81	80	0	0	0	0	0	0	0	1	
90-94	25	25	0	0	0	0	0	0	0	0	
95-99	5	5	0	0	0	0	0	0	0	0	
100+	1	1	0	0	0	0	0	0	0	0	
Total	2,638	2,586	7	31	2	1	0	1	27	14	

Source: Decennial Census 2010, 2000, American Community Survey 2008-2012

Prepared for the Pennsylvania State Library by The Pennsylvania State Data Center, 9/2014

Page 6

# Reference Data

## Portage Public Library

### H. Income Distribution, 2008-2012

Range (in thousands)	Households	Pct of Total
<\$10K	111	9.8%
\$10K to <\$25K	292	25.9%
\$25K to <\$50K	360	31.9%
\$50K to <\$75K	170	15.1%
\$75K to <\$100K	135	12.0%
\$100K to <\$150K	56	5.0%
\$150K+	5	0.4%

### I. Household Type, 2010

Household Type	2000	2000pct	2010	2010pct
Total Households	1,232	100.0%	1,161	100.0%
Family Households	757	61.4%	702	60.5%
Husband-wife, no children w/children	209	17.0%	158	13.6%
Female head, no husband, w/ children	72	5.8%	95	8.2%
Male head, no wife, w/ children	24	1.9%	33	2.8%
Without children	452	36.7%	416	35.8%
Nonfamily households	475	38.6%	459	39.5%
Living alone	432	35.1%	396	34.1%
Other nonfamily	43	3.5%	63	5.4%

### J. Household Type by Race and Ethnicity, 2008-2012

Household Type	White, NH	Black, NH	Other, NH	Hispanic
Total Households	1,145	4	7	5
Husband wife family	41.2%	0.0%	28.6%	40.0%
Family with male head, no wife	5.7%	50.0%	14.3%	0.0%
family with female head, no husband	13.8%	0.0%	0.0%	0.0%
Living alone	34.1%	50.0%	28.6%	20.0%
Other nonfamily	5.2%	0.0%	28.6%	40.0%

### K. Poverty, 2008-2012

Families	Poverty	PA
All families	14.2%	9.1%
Families w/ related children	25.7%	15.3%
Female householder, no husband present	37.1%	28.8%
Female householder, no husband present, w/ related children	49.0%	39.2%
All people	17.7%	13.1%
Under 18 years	27.3%	18.4%
18 to 64 years	15.9%	12.3%
65 years and over	10.5%	8.4%

### L. Educational Attainment by Race and Ethnicity, 2008-2012

Education Level	White, NH	Black	Other	Hispanic	Total
Population 25 years and over	1,796	0	0	6	1,802
Less than high school	11.9%	0.0%	0%	0.0%	11.9%
High school graduate (includes equivalency	48.5%	0.0%	0%	0.0%	48.3%
Some college or associates degree	24.8%	0.0%	0%	100.0%	25.1%
Bachelors degree or higher	14.8%	0.0%	0%	0.0%	14.7%

### M. Occupation, 2008-2012

Occupation	Estimate	Percent
Civilian population age 16 years and over	1,062	100.0%
Management, professional, and related occupations	261	24.6%
Service occupations	334	31.5%
Sales and office occupations	200	18.8%
Farming, fishing, and forestry occupations	0	0.0%
Construction, extraction, maintenance, and repair occupations	95	8.9%
Production, transportation, and material moving occupations	172	16.2%

### N. Class of Worker, 2008-2012

Occupation	Estimate	Percent
Civilian population age 16 years and over	1,062	100.0%
Private, for profit, wage and salary employee	634	59.7%
Private, not for profit, wage and salary employee	147	13.8%
Private, for profit, wage and salary self-employed in own business	11	1.0%
Government workers	198	18.6%
Self-employed in own not incorporated business	67	6.3%
Unpaid family workers in family business	5	0.5%