

Demographic Profile

Priestley Forsyth Memorial Library

Population Growth: The total population of the Priestley Forsyth Memorial Library service area increased by .7 percent over the past decade to 7,489; this growth rate was lower than the statewide rate of 3.4 percent.

Age and Sex: In 2010, the Priestley Forsyth Memorial Library service area had a total population of 7,489 - 3,618 males (48.3 percent) and 3,871 females (51.7 percent). The age structure of the population in 2010 was as follows: 20.2 percent of the population was under 20 years old, 58.4 percent was 20 to 64 years old and 21.4 percent was 65 years or older.

Race and Ethnicity: For people reporting one race alone, not of Hispanic ethnicity, 95.8 percent were White; .9 percent were Black or African American; 1.3 percent were Other Race Alone.¹ A total of 150 or 2.0 percent of the population were Hispanic.²

Households: In 2010, there were 3,240 households in the Priestley Forsyth Memorial Library service area. The average household size was 2.26 people. Families made up 65.4 percent of the households. This figure includes both families with (22.2 percent) and without (43.2 percent) children. Of families with children less than 18 years old, 14.9 percent were married-couple families, 4.9 percent were female householder families with no husband present, and the remaining (2.3 percent) were male-headed households with no wife present.

Education: The educational attainment of the population 25 years and over was lower in the Priestley Forsyth Memorial Library service area than in Pennsylvania. During the period 2008-2012, 21.4 percent of residents had earned a Bachelor's degree or higher, compared with 27.0 percent statewide. A total of 681 or 12.2 percent had not completed high school, compared with 11.7 percent for the commonwealth as a whole.

Income and Poverty: Households with incomes of \$25,000 to \$49,999 (27.4 percent) made up the largest percent of households in the Priestley Forsyth Memorial Library service area in 2008-2012. For comparison, 24.4 percent of commonwealth households were in this range during the period.

In 2008-2012, the overall poverty rate for the Priestley Forsyth Memorial Library service area was lower than Pennsylvania (12.0 percent compared to 13.1 percent). The poverty rate for the population under 18 years of age was 22.4 percent, compared with 11.4 percent of people 18 to 64 years and 5.8 percent for those aged 65 years and over. A total of 153 or 7.3 percent of all families had incomes below poverty level. In 2008-2012, 17.8 percent of families with related children and 38.0 percent of families with a female householder and no husband with related children present had incomes below the poverty level.

Class of Worker and Occupation: In 2008-2012, 82.2 percent of the workforce was private wage and salary workers; 12.9 percent were federal, state, or local government workers; and 4.9 percent were self-employed in their own (not incorporated) business.

The top occupation group for the civilian employed population 16 years and over in the Priestley Forsyth Memorial Library service area in 2008-2012 was Management, business, science, and arts (28.0 percent).

¹ Other race includes those who identified themselves as American Indian/Alaska Native, Asian, Native Hawaiian/Other Pacific Islander, Some Other Race and Two or More Races on the 2010 Census form.

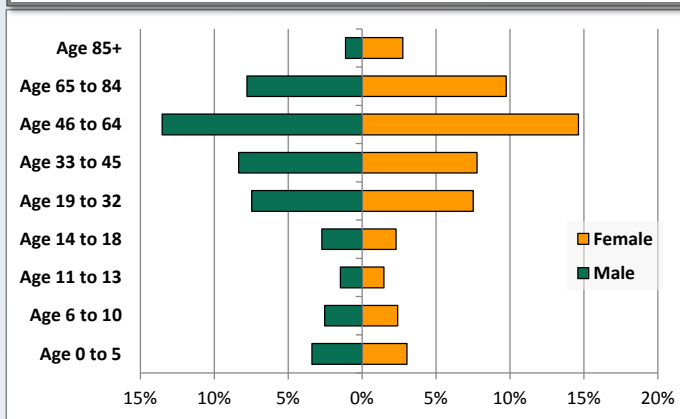
² People of Hispanic origin may be of any race.

Demographic Profile

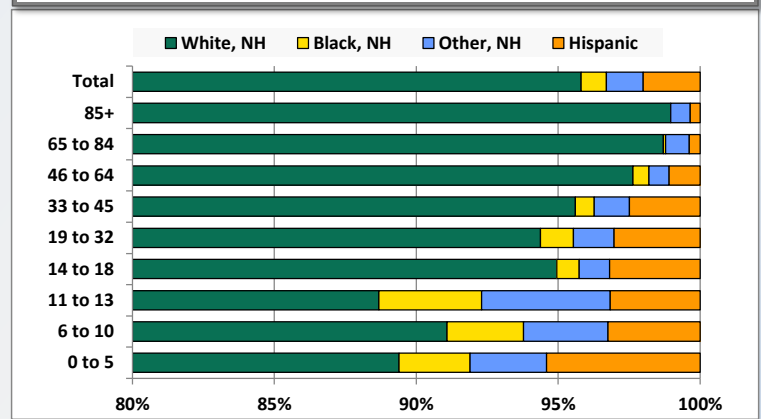
Priestley Forsyth Memorial Library

Key Indicators		
	2000	2010
Population Growth		
Total Population	7,436	7,489
10-Year Growth	N/A	0.7%
Diversity		
White Alone, Non-Hispanic	98.1%	95.8%
Black Alone, Non-Hispanic	0.5%	0.9%
Other Race Alone, Non-Hispanic	0.7%	1.3%
Percent Hispanic	0.7%	2.0%
Aging		
Percent 65 Years and Over	19.6%	21.4%
Households		
Percent Married Couple with Own Children	20.3%	14.9%
Percent Living Alone	27.2%	28.8%

Population by Library-Defined Age Group, 2010



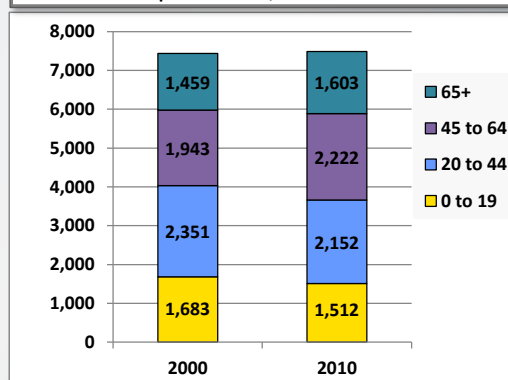
Race/Ethnicity by Library-Defined Age Group, 2010



Population Growth by Library-Defined Age Group, 2000 to 2010

Age Group	2010	Change	
		Numeric	Percent
Total	7,489	53	0.7%
85+	289	45	18.4%
65 to 84	1,314	99	8.1%
46 to 64	2,110	268	14.5%
33 to 45	1,207	-275	-18.6%
19 to 32	1,121	96	9.4%
14 to 18	376	-87	-18.8%
11 to 13	221	-95	-30.1%
6 to 10	370	-62	-14.4%
0 to 5	481	64	15.3%

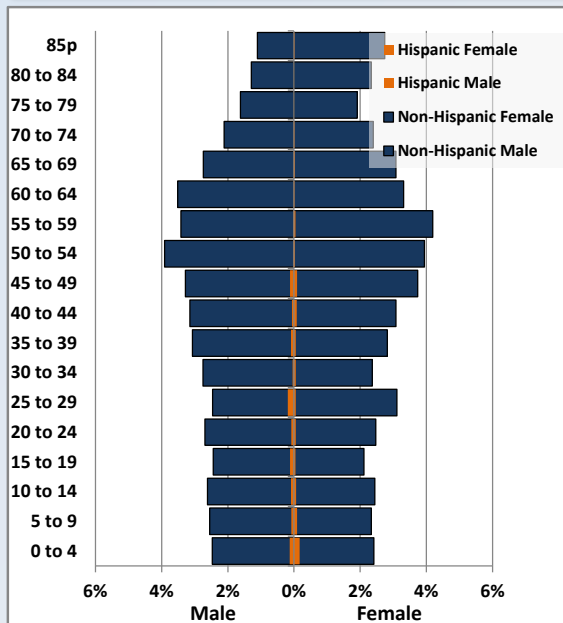
Population Total, 2000 and 2010



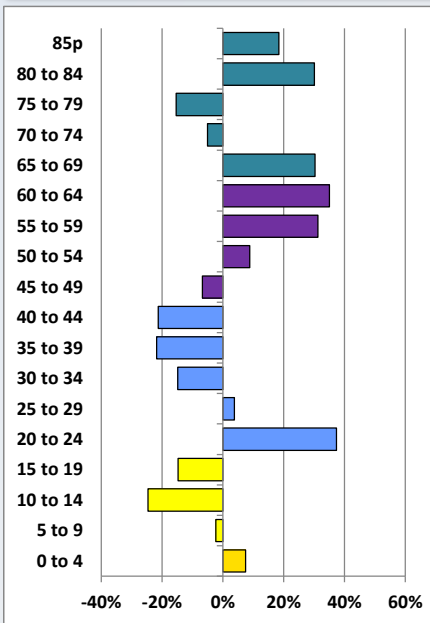
Demographic Profile

Priestley Forsyth Memorial Library

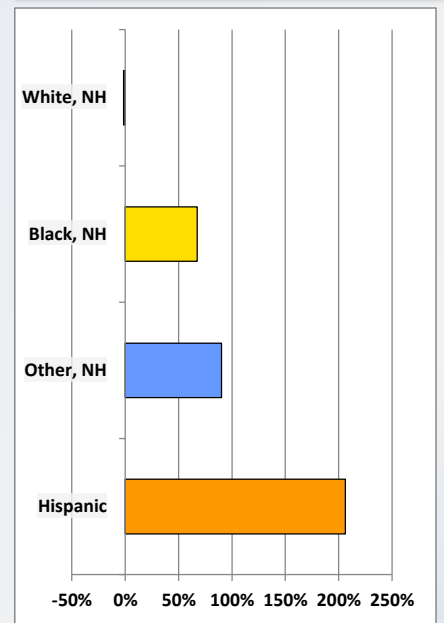
Population by 5-Year Age Cohorts



Pop Change by Age, 2000 to 2010

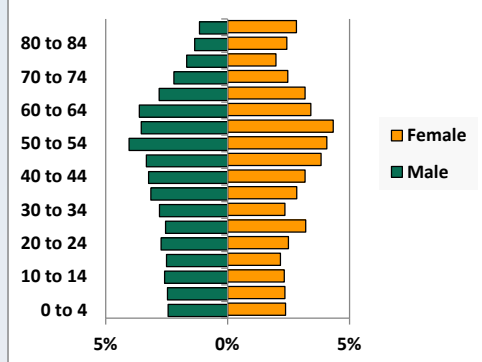


Pop Change by Race/Ethnicity, 2000 to 2010

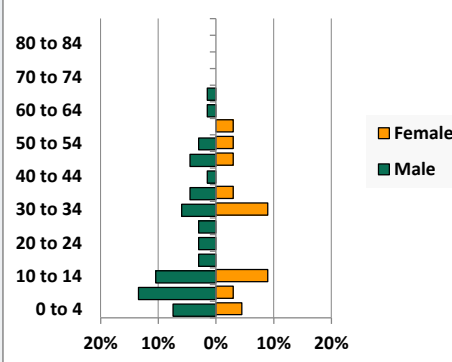


Population by Age, Race and Ethnicity 2010

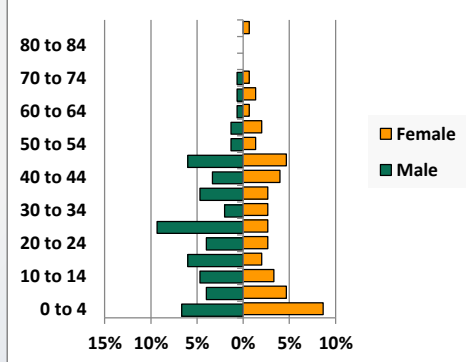
White, Not Hispanic



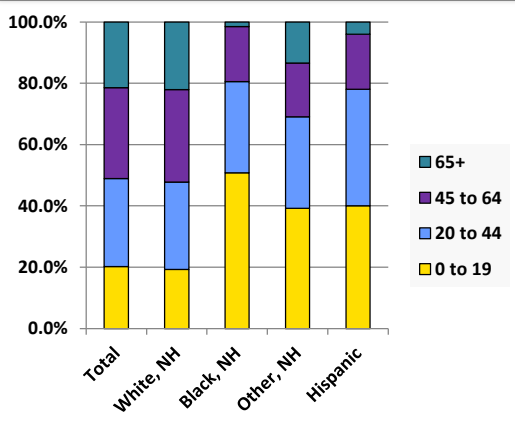
Black, Non-Hispanic



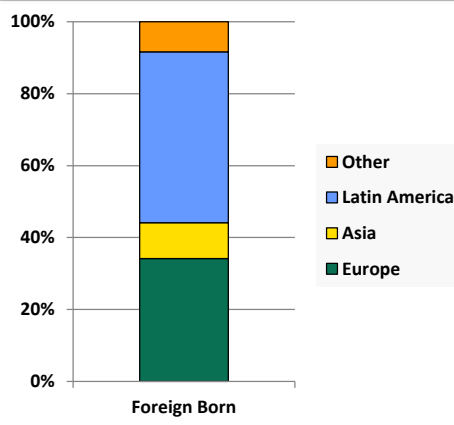
Hispanic



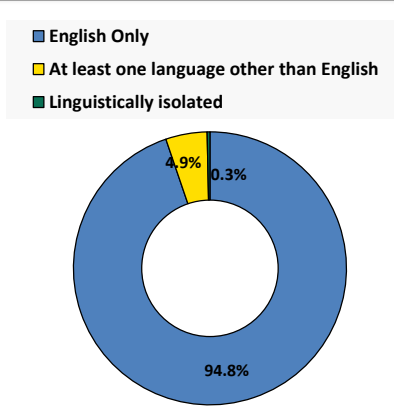
Age by Race and Ethnicity, 2010



Foreign Born, 2010



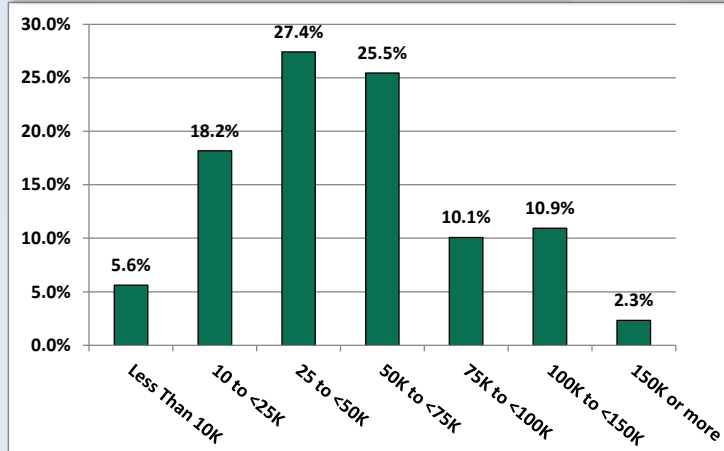
Household Language, 2010



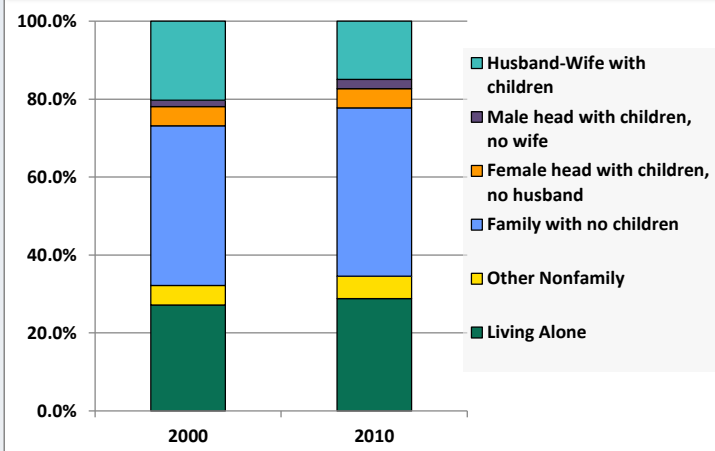
Demographic Profile

Priestley Forsyth Memorial Library

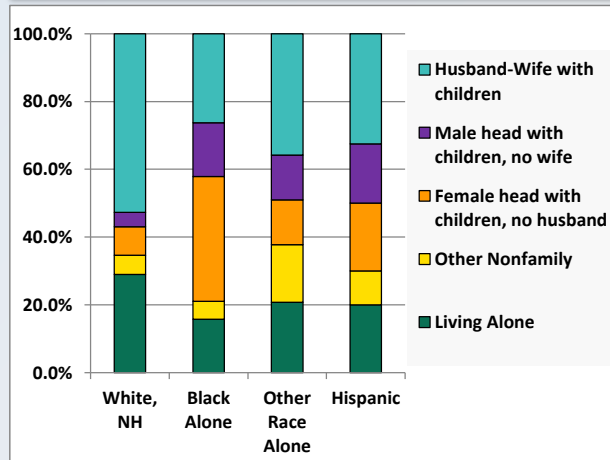
Household Income Distribution, 2008-2012



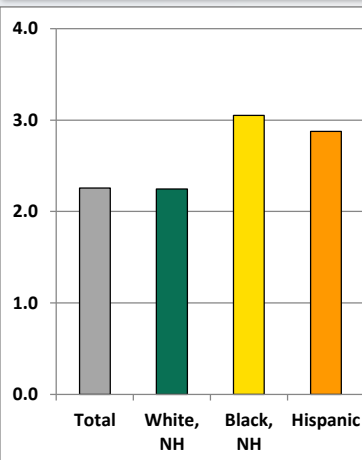
Household Type, 2000 and 2010



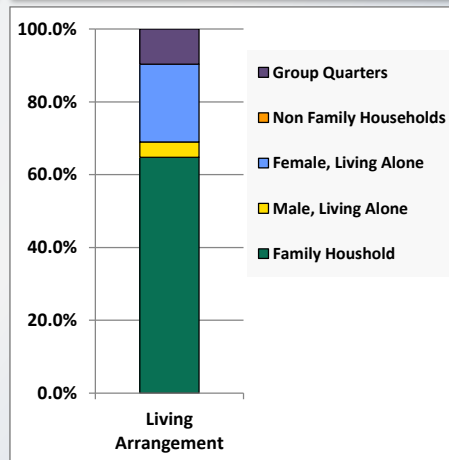
Household Type by Race/Ethnicity, 2010



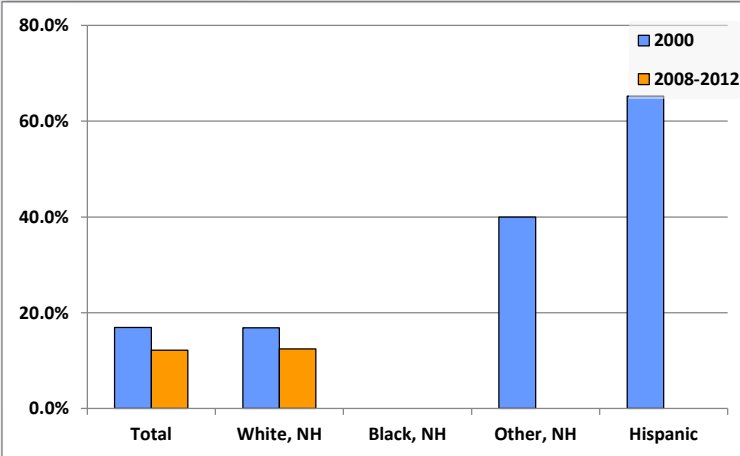
Average Household Size, 2010



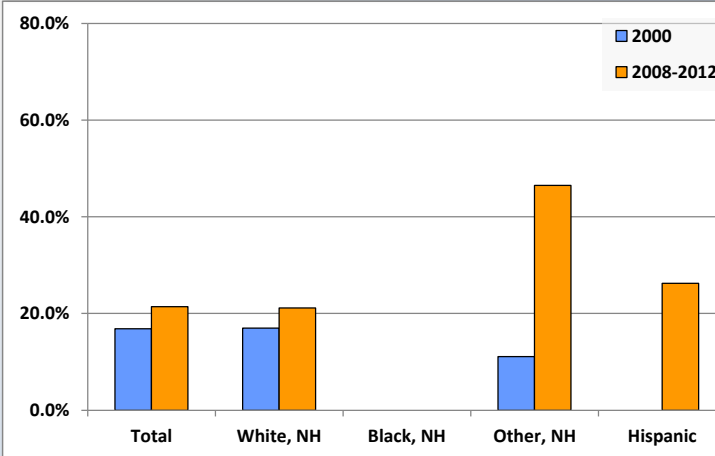
Living Arrangements 65+, 2008-2012



Percent of Adults that Did Not Complete High School



Percent of Adults Who Attained a Bachelor's Degree or Higher



Reference Data

Priestley Forsyth Memorial Library

	Total Population	White, Non- Hispanic	Black, Non- Hispanic	Other, Non- Hispanic	Detail for Other, Non-Hispanic					Hispanic or Latino
					AIAN	Asian	NHOPI	Some Other Race	Two or More Races	
A. Total Population										
2000 Total	7,436	7,296	40	51	13	21	0	3	14	49
2000 pct of Total	100.0%	98.1%	0.5%	0.7%	0.2%	0.3%	0.0%	0.0%	0.2%	0.7%
2010 Total	7,489	7,175	67	97	12	21	0	6	58	150
2010 pct of Total	100.0%	95.8%	0.9%	1.3%	0.2%	0.3%	0.0%	0.1%	0.8%	2.0%
B. Population by Major Age Groups by Race and Ethnicity										
2000										
0-19	1,683	1,614	21	26	7	11	0	3	5	22
20-64	4,294	4,233	16	21	3	10	0	0	8	24
65+	1,459	1,449	3	4	3	0	0	0	1	3
85+	244	242	0	0	0	0	0	0	0	2
2010										
0-19	1,512	1,380	34	38	4	5	0	2	27	60
20-64	4,374	4,212	32	46	8	11	0	3	24	84
65+	1,603	1,583	1	13	0	5	0	1	7	6
85+	289	286	0	2	0	0	0	0	2	1
C. Age Mix for Each Racial and Ethnic Group										
2000										
0-19	22.6%	22.1%	52.5%	51.0%	53.8%	52.4%	0.0%	100.0%	35.7%	44.9%
20-64	57.7%	58.0%	40.0%	41.2%	23.1%	47.6%	0.0%	0.0%	57.1%	49.0%
65+	19.6%	19.9%	7.5%	7.8%	23.1%	0.0%	0.0%	0.0%	7.1%	6.1%
85+	3.3%	3.3%	0.0%	0.0%	0.0%	0.0%	0.0%	0.0%	0.0%	4.1%
2010										
0-19	20.2%	19.2%	50.7%	39.2%	33.3%	23.8%	0.0%	33.3%	46.6%	40.0%
20-64	58.4%	58.7%	47.8%	47.4%	66.7%	52.4%	0.0%	50.0%	41.4%	56.0%
65+	21.4%	22.1%	1.5%	13.4%	0.0%	23.8%	0.0%	16.7%	12.1%	4.0%
85+	3.9%	4.0%	0.0%	2.1%	0.0%	0.0%	0.0%	0.0%	3.4%	0.7%
D. Racial and Ethnic Composition of Each Age Group										
2000										
0-19	100.0%	95.9%	1.2%	1.5%	0.4%	0.7%	0.0%	0.2%	0.3%	1.3%
20-64	100.0%	98.6%	0.4%	0.5%	0.1%	0.2%	0.0%	0.0%	0.2%	0.6%
65+	100.0%	99.3%	0.2%	0.3%	0.2%	0.0%	0.0%	0.0%	0.1%	0.2%
85+	100.0%	99.2%	0.0%	0.0%	0.0%	0.0%	0.0%	0.0%	0.0%	0.8%
2010										
0-19	100.0%	91.3%	2.2%	2.5%	0.3%	0.3%	0.0%	0.1%	1.8%	4.0%
20-64	100.0%	96.3%	0.7%	1.1%	0.2%	0.3%	0.0%	0.1%	0.5%	1.9%
65+	100.0%	98.8%	0.1%	0.8%	0.0%	0.3%	0.0%	0.1%	0.4%	0.4%
85+	100.0%	99.0%	0.0%	0.7%	0.0%	0.0%	0.0%	0.0%	0.7%	0.3%
E. Population Growth										
2000-2010, Change										
0-19	-171	-234	13	12	-3	-6	0	-1	22	38
20-64	80	-21	16	25	5	1	0	3	16	60
65+	144	134	-2	9	-3	5	0	1	6	3
85+	45	44	0	2	0	0	0	0	2	-1
Total	53	-121	27	46	-1	0	0	3	44	101
2000-2010, Pct Change										
0-19	-10.2%	-14.5%	61.9%	46.2%	-42.9%	-54.5%	0.0%	-33.3%	440.0%	172.7%
20-64	1.9%	-0.5%	100.0%	119.0%	166.7%	10.0%	0.0%	0.0%	200.0%	250.0%
65+	9.9%	9.2%	-66.7%	225.0%	-100.0%	0.0%	0.0%	0.0%	600.0%	100.0%
85+	18.4%	18.2%	0.0%	0.0%	0.0%	0.0%	0.0%	0.0%	0.0%	-50.0%
Total	0.7%	-1.7%	67.5%	90.2%	-7.7%	0.0%	0.0%	100.0%	314.3%	206.1%

Source: Decennial Census 2010, 2000, American Community Survey 2008-2012

Prepared for the Pennsylvania State Library by The Pennsylvania State Data Center, 9/2014

Reference Data

Priestley Forsyth Memorial Library

	Total Population	White, Non- Hispanic	Black, Non- Hispanic	Other, Non- Hispanic	Detail for Other, Non-Hispanic					Hispanic or Latino
					AIAN	Asian	NHOPI	Some Other	Two or More	
								Race	Races	
F. Population by Library-Defined Age Groups, 2010										
0-5	481	430	12	13	0	2	0	2	9	26
6-10	370	337	10	11	3	1	0	0	7	12
11-13	221	196	8	10	1	2	0	0	7	7
14-18	376	357	3	4	0	0	0	0	4	12
19-32	1,121	1,058	13	16	0	5	0	1	10	34
33-45	1,207	1,154	8	15	3	1	0	1	10	30
46-64	2,110	2,060	12	15	5	5	0	1	4	23
65-84	1,314	1,297	1	11	0	5	0	1	5	5
85+	289	286	0	2	0	0	0	0	2	1
Total	7,489	7,175	67	97	12	21	0	6	58	150
G. Population by 5-Year Age Cohorts, 2010										
0-4	389	346	8	12	0	2	0	2	8	23
5-9	379	346	11	9	2	1	0	0	6	13
10-14	391	352	13	14	2	2	0	0	10	12
15-19	353	336	2	3	0	0	0	0	3	12
20-24	397	375	2	10	0	2	0	1	7	10
25-29	435	412	2	3	0	2	0	0	1	18
30-34	390	369	10	4	0	1	0	0	3	7
35-39	452	430	5	6	1	1	0	0	4	11
40-44	478	460	1	6	1	0	0	1	4	11
45-49	542	514	5	7	1	1	0	1	4	16
50-54	592	582	4	2	2	0	0	0	0	4
55-59	575	565	2	3	2	0	0	0	1	5
60-64	513	505	1	5	1	4	0	0	0	2
65-69	439	429	1	6	0	1	0	1	4	3
70-74	339	335	0	2	0	2	0	0	0	2
75-79	264	262	0	2	0	1	0	0	1	0
80-84	272	271	0	1	0	1	0	0	0	0
85-89	163	160	0	2	0	0	0	0	2	1
90-94	81	81	0	0	0	0	0	0	0	0
95-99	40	40	0	0	0	0	0	0	0	0
100+	5	5	0	0	0	0	0	0	0	0
Total	7,489	7,175	67	97	12	21	0	6	58	150

Source: Decennial Census 2010, 2000, American Community Survey 2008-2012

Prepared for the Pennsylvania State Library by The Pennsylvania State Data Center, 9/2014

Page 6

Reference Data

Priestley Forsyth Memorial Library

H. Income Distribution, 2008-2012

Range (in thousands)	Households	Pct of Total
<\$10K	189	5.6%
\$10K to <\$25K	611	18.2%
\$25K to <\$50K	922	27.4%
\$50K to <\$75K	856	25.5%
\$75K to <\$100K	339	10.1%
\$100K to <\$150K	368	10.9%
\$150K+	78	2.3%

I. Household Type, 2010

Household Type	2000	2000pct	2010	2010pct
Total Households	3,100	100.0%	3,240	100.0%
Family Households	2,102	67.8%	2,119	65.4%
Husband-wife, no children w/children	628	20.3%	484	14.9%
Female head, no husband, w/ children	153	4.9%	160	4.9%
Male head, no wife, w/ children	51	1.6%	76	2.3%
Without children	1,270	41.0%	1,399	43.2%
Nonfamily households	998	32.2%	1,121	34.6%
Living alone	842	27.2%	933	28.8%
Other nonfamily	156	5.0%	188	5.8%

J. Household Type by Race and Ethnicity, 2008-2012

Household Type	White, NH	Black, NH	Other, NH	Hispanic
Total Households	3,150	19	53	40
Husband wife family	52.7%	26.3%	35.8%	32.5%
Family with male head, no wife	4.3%	15.8%	13.2%	17.5%
family with female head, no husband	8.4%	36.8%	13.2%	20.0%
Living alone	29.0%	15.8%	20.8%	20.0%
Other nonfamily	5.6%	5.3%	17.0%	10.0%

K. Poverty, 2008-2012

Families	Poverty	PA
All families	7.3%	9.1%
Families w/ related children	17.8%	15.3%
Female householder, no husband present	25.6%	28.8%
Female householder, no husband present, w/ related children	38.0%	39.2%
All people	12.0%	13.1%
Under 18 years	22.4%	18.4%
18 to 64 years	11.4%	12.3%
65 years and over	5.8%	8.4%

L. Educational Attainment by Race and Ethnicity, 2008-2012

Education Level	White, NH	Black	Other	Hispanic	Total
Population 25 years and over	5,476	0	86	99	5,604
Less than high school	12.4%	0.0%	0%	0.0%	12.2%
High school graduate (includes equivalency)	46.7%	0.0%	36%	58.6%	46.6%
Some college or associates degree	19.7%	0.0%	17%	15.2%	19.8%
Bachelors degree or higher	21.2%	0.0%	47%	26.3%	21.4%

M. Occupation, 2008-2012

Occupation	Estimate	Percent
Civilian population age 16 years and over	3,830	100.0%
Management, professional, and related occupations	1,072	28.0%
Service occupations	609	15.9%
Sales and office occupations	945	24.7%
Farming, fishing, and forestry occupations	11	0.3%
Construction, extraction, maintenance, and repair occupations	425	11.1%
Production, transportation, and material moving occupations	768	20.1%

N. Class of Worker, 2008-2012

Occupation	Estimate	Percent
Civilian population age 16 years and over	3,830	100.0%
Private, for profit, wage and salary employee	2,678	69.9%
Private, not for profit, wage and salary employee	441	11.5%
Private, for profit, wage and salary self-employed in own business	30	0.8%
Government workers	494	12.9%
Self-employed in own not incorporated business	187	4.9%
Unpaid family workers in family business	0	0.0%