

## Demographic Profile Ralpho Township Public Library

**Population Growth:** The total population of the Ralpho Township Public Library service area increased by 14.8 percent over the past decade to 4,321; this growth rate was higher than the statewide rate of 3.4 percent.

**Age and Sex:** In 2010, the Ralpho Township Public Library service area had a total population of 4,321 - 2,090 males (48.4 percent) and 2,231 females (51.6 percent). The age structure of the population in 2010 was as follows: 22.1 percent of the population was under 20 years old, 58.5 percent was 20 to 64 years old and 19.4 percent was 65 years or older.

**Race and Ethnicity:** For people reporting one race alone, not of Hispanic ethnicity, 97.9 percent were White; .3 percent were Black or African American; 1.0 percent were Other Race Alone.<sup>1</sup> A total of 33 or .8 percent of the population were Hispanic.<sup>2</sup>

**Households:** In 2010, there were 1,797 households in the Ralpho Township Public Library service area. The average household size was 2.40 people. Families made up 72.1 percent of the households. This figure includes both families with (25.7 percent) and without (46.4 percent) children. Of families with children less than 18 years old, 20.3 percent were married-couple families, 3.6 percent were female householder families with no husband present, and the remaining (1.8 percent) were male-headed households with no wife present.

**Education:** The educational attainment of the population 25 years and over was higher in the Ralpho Township Public Library service area than in Pennsylvania. During the period 2008-2012, 27.3 percent of residents had earned a Bachelor's degree or higher, compared with 27.0 percent statewide. A total of 310 or 9.5 percent had not completed high school, compared with 11.7 percent for the commonwealth as a whole.

**Income and Poverty:** Households with incomes of less than \$25,000 (22.9 percent) made up the largest percent of households in the Ralpho Township Public Library service area in 2008-2012. For comparison, 23.6 percent of commonwealth households were in this range during the period.

In 2008-2012, the overall poverty rate for the Ralpho Township Public Library service area was lower than Pennsylvania (8.3 percent compared to 13.1 percent). The poverty rate for the population under 18 years of age was 10.1 percent, compared with 6.0 percent of people 18 to 64 years and 12.7 percent for those aged 65 years and over. A total of 128 or 8.5 percent of all families had incomes below poverty level. In 2008-2012, 14.8 percent of families with related children and 51.1 percent of families with a female householder and no husband with related children present had incomes below the poverty level.

**Class of Worker and Occupation:** In 2008-2012, 79.2 percent of the workforce was private wage and salary workers; 17.7 percent were federal, state, or local government workers; and 3.1 percent were self-employed in their own (not incorporated) business.

The top occupation group for the civilian employed population 16 years and over in the Ralpho Township Public Library service area in 2008-2012 was Management, business, science, and arts (45.2 percent).

---

<sup>1</sup> Other race includes those who identified themselves as American Indian/Alaska Native, Asian, Native Hawaiian/Other Pacific Islander, Some Other Race and Two or More Races on the 2010 Census form.

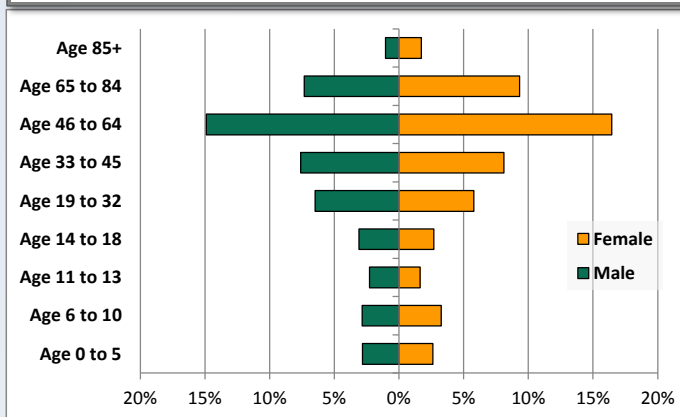
<sup>2</sup> People of Hispanic origin may be of any race.

# Demographic Profile

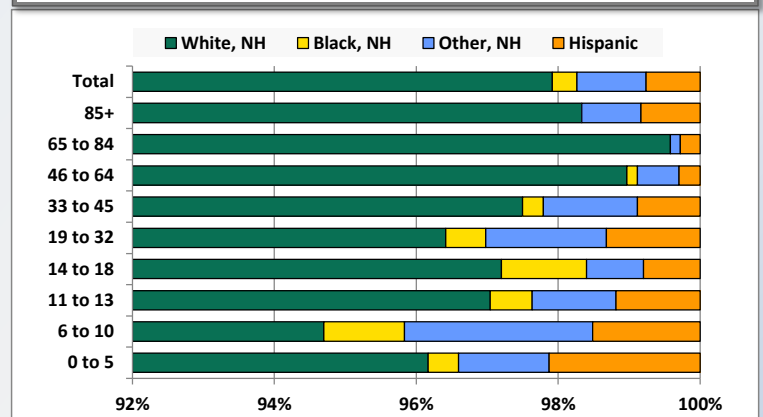
Ralpho Township Public Library

Key Indicators		
	2000	2010
<b>Population Growth</b>		
Total Population	3,764	4,321
10-Year Growth	N/A	14.8%
<b>Diversity</b>		
White Alone, Non-Hispanic	98.9%	97.9%
Black Alone, Non-Hispanic	0.1%	0.3%
Other Race Alone, Non-Hispanic	0.6%	1.0%
Percent Hispanic	0.4%	0.8%
<b>Aging</b>		
Percent 65 Years and Over	19.3%	19.4%
<b>Households</b>		
Percent Married Couple with Own Children	27.2%	20.3%
Percent Living Alone	22.9%	23.8%

Population by Library-Defined Age Group, 2010



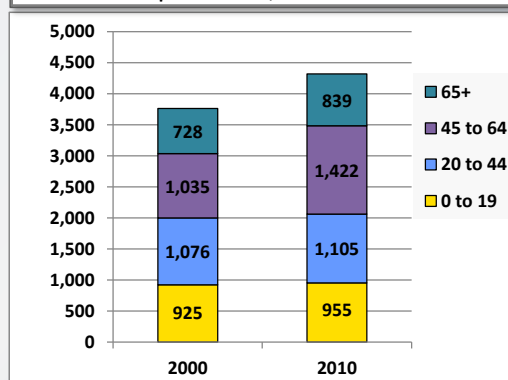
Race/Ethnicity by Library-Defined Age Group, 2010



Population Growth by Library-Defined Age Group, 2000 to 2010

Age Group	2010	Change	
		Numeric	Percent
Total	4,321	557	14.8%
85+	120	63	110.5%
65 to 84	719	48	7.2%
46 to 64	1,355	392	40.7%
33 to 45	679	-85	-11.1%
19 to 32	530	127	31.5%
14 to 18	250	-37	-12.9%
11 to 13	169	14	9.0%
6 to 10	264	30	12.8%
0 to 5	235	5	2.2%

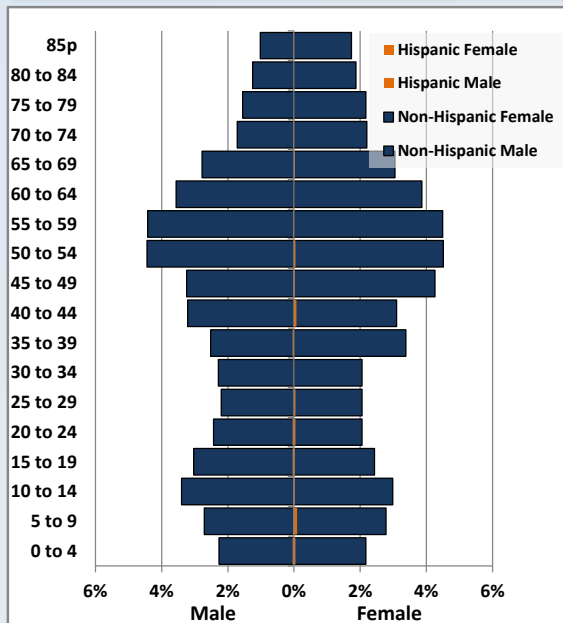
Population Total, 2000 and 2010



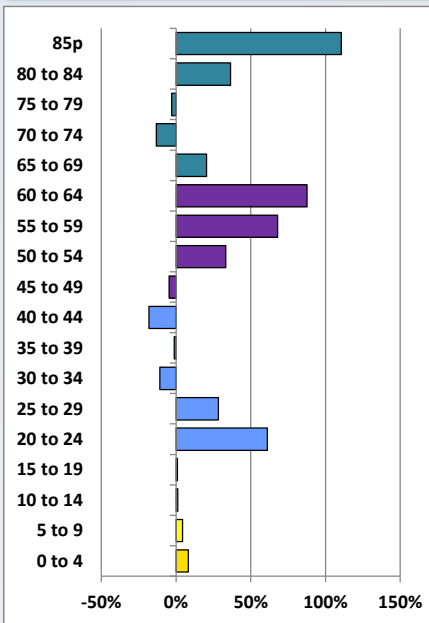
# Demographic Profile

Ralpho Township Public Library

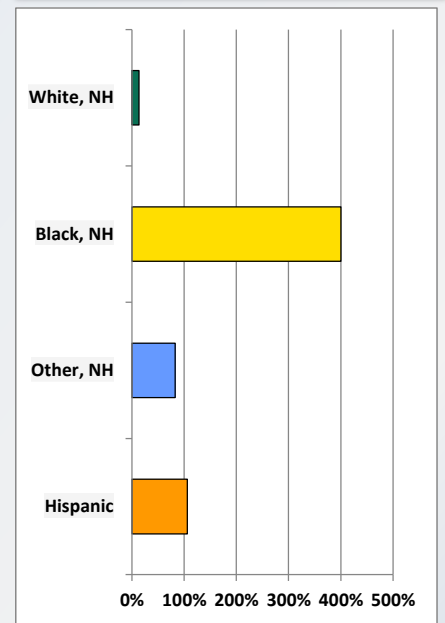
Population by 5-Year Age Cohorts



Pop Change by Age, 2000 to 2010

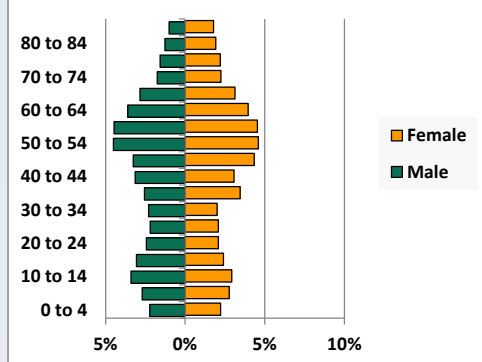


Pop Change by Race/Ethnicity, 2000 to 2010

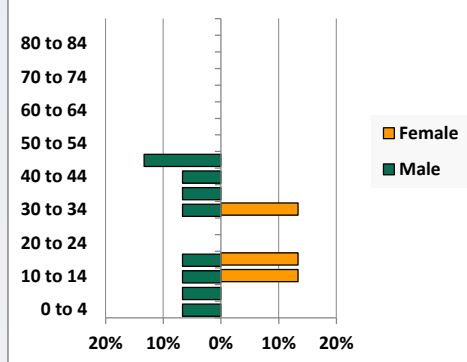


Population by Age, Race and Ethnicity 2010

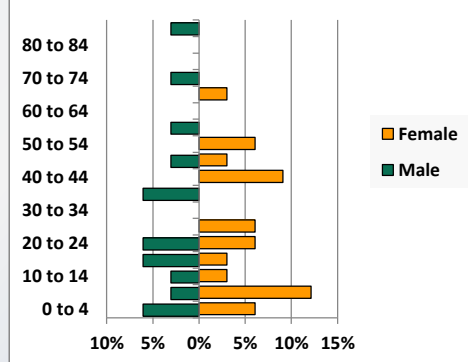
White, Not Hispanic



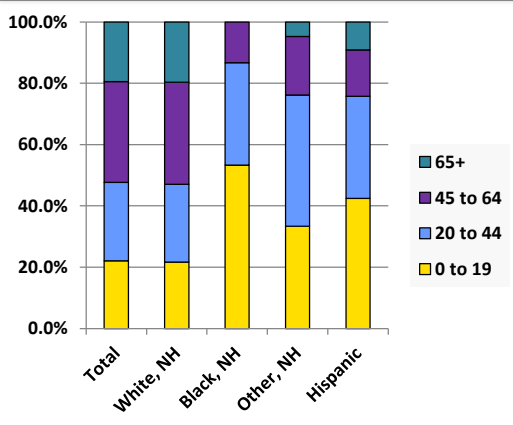
Black, Non-Hispanic



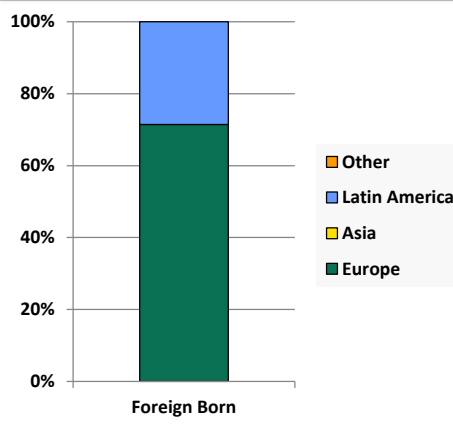
Hispanic



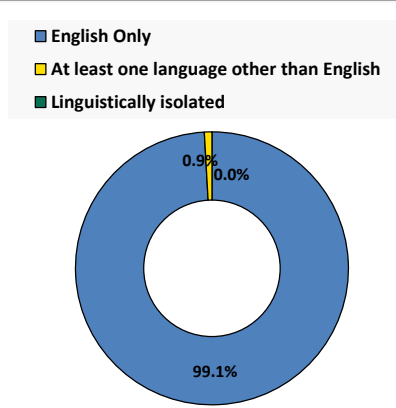
Age by Race and Ethnicity, 2010



Foreign Born, 2010



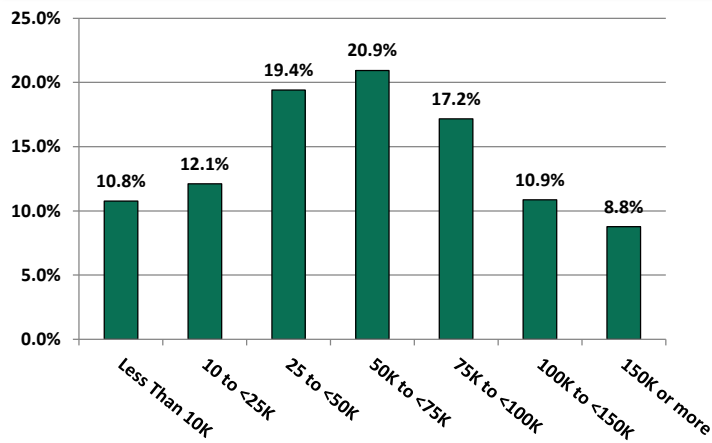
Household Language, 2010



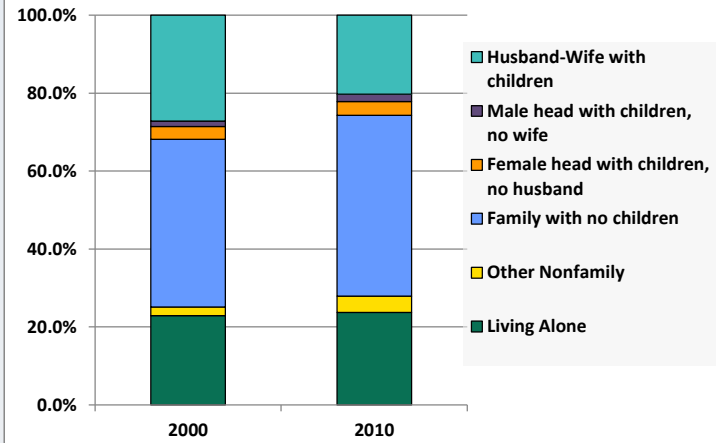
# Demographic Profile

Ralpho Township Public Library

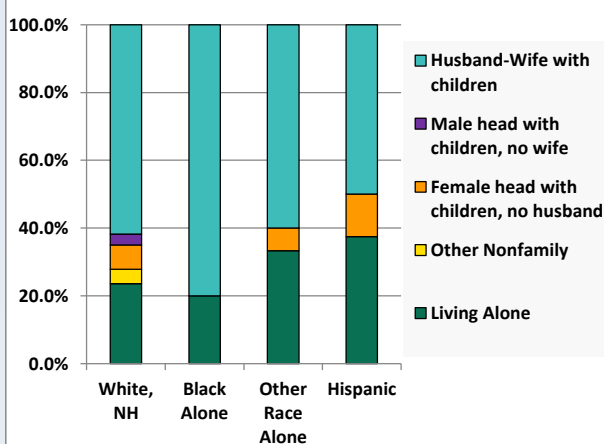
Household Income Distribution, 2008-2012



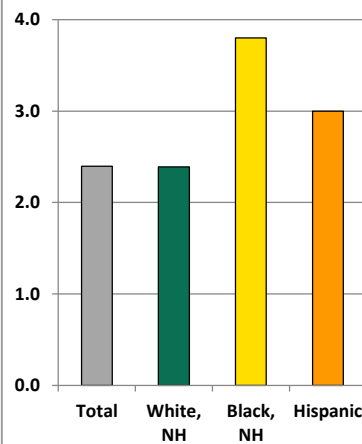
Household Type, 2000 and 2010



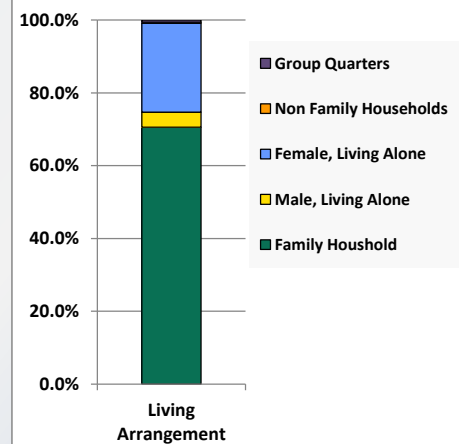
Household Type by Race/Ethnicity, 2010



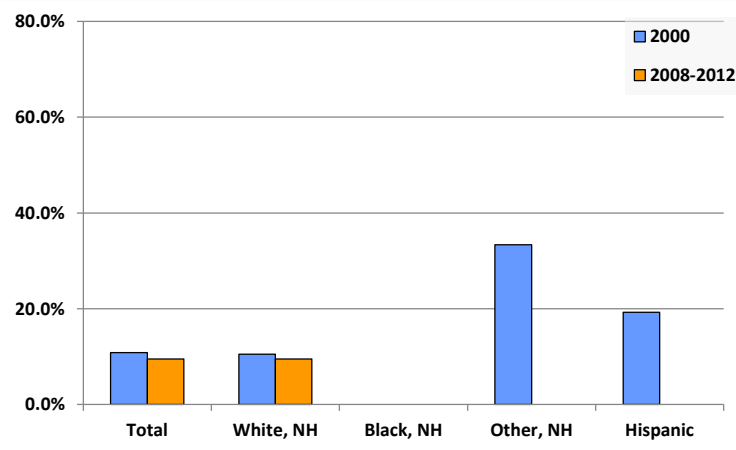
Average Household Size, 2010



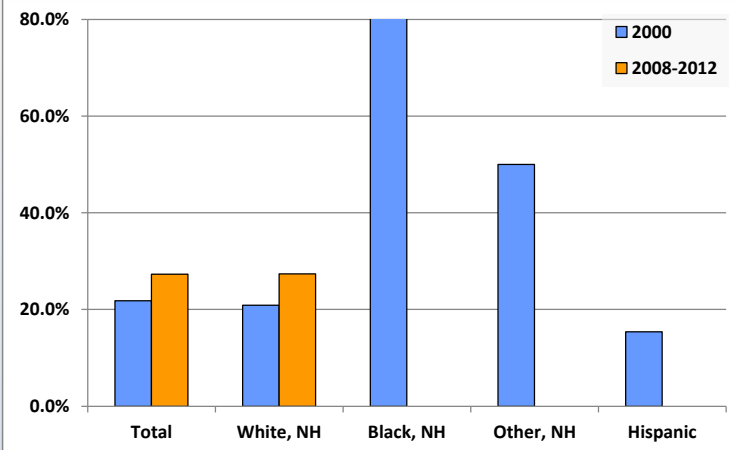
Living Arrangements 65+, 2008-2012



Percent of Adults that Did Not Complete High School



Percent of Adults Who Attained a Bachelor's Degree or Higher



# Reference Data

## Ralpho Township Public Library

	Total Population	White, Non- Hispanic	Black, Non- Hispanic	Other, Non- Hispanic	Detail for Other, Non-Hispanic					Hispanic or Latino
					AIAN	Asian	NHOPI	Some Other Race	Two or More Races	
A. Total Population										
2000 Total	3,764	3,722	3	23	3	10	0	0	10	16
2000 pct of Total	100.0%	98.9%	0.1%	0.6%	0.1%	0.3%	0.0%	0.0%	0.3%	0.4%
2010 Total	4,321	4,231	15	42	6	23	0	0	13	33
2010 pct of Total	100.0%	97.9%	0.3%	1.0%	0.1%	0.5%	0.0%	0.0%	0.3%	0.8%
B. Population by Major Age Groups by Race and Ethnicity										
2000										
0-19	925	915	2	5	0	1	0	0	4	3
20-64	2,111	2,082	1	16	3	8	0	0	5	12
65+	728	725	0	2	0	1	0	0	1	1
85+	57	57	0	0	0	0	0	0	0	0
2010										
0-19	955	919	8	14	2	6	0	0	6	14
20-64	2,527	2,478	7	26	4	16	0	0	6	16
65+	839	834	0	2	0	1	0	0	1	3
85+	120	118	0	1	0	1	0	0	0	1
C. Age Mix for Each Racial and Ethnic Group										
2000										
0-19	24.6%	24.6%	66.7%	21.7%	0.0%	10.0%	0.0%	0.0%	40.0%	18.8%
20-64	56.1%	55.9%	33.3%	69.6%	100.0%	80.0%	0.0%	0.0%	50.0%	75.0%
65+	19.3%	19.5%	0.0%	8.7%	0.0%	10.0%	0.0%	0.0%	10.0%	6.3%
85+	1.5%	1.5%	0.0%	0.0%	0.0%	0.0%	0.0%	0.0%	0.0%	0.0%
2010										
0-19	22.1%	21.7%	53.3%	33.3%	33.3%	26.1%	0.0%	0.0%	46.2%	42.4%
20-64	58.5%	58.6%	46.7%	61.9%	66.7%	69.6%	0.0%	0.0%	46.2%	48.5%
65+	19.4%	19.7%	0.0%	4.8%	0.0%	4.3%	0.0%	0.0%	7.7%	9.1%
85+	2.8%	2.8%	0.0%	2.4%	0.0%	4.3%	0.0%	0.0%	0.0%	3.0%
D. Racial and Ethnic Composition of Each Age Group										
2000										
0-19	100.0%	98.9%	0.2%	0.5%	0.0%	0.1%	0.0%	0.0%	0.4%	0.3%
20-64	100.0%	98.6%	0.0%	0.8%	0.1%	0.4%	0.0%	0.0%	0.2%	0.6%
65+	100.0%	99.6%	0.0%	0.3%	0.0%	0.1%	0.0%	0.0%	0.1%	0.1%
85+	100.0%	100.0%	0.0%	0.0%	0.0%	0.0%	0.0%	0.0%	0.0%	0.0%
2010										
0-19	100.0%	96.2%	0.8%	1.5%	0.2%	0.6%	0.0%	0.0%	0.6%	1.5%
20-64	100.0%	98.1%	0.3%	1.0%	0.2%	0.6%	0.0%	0.0%	0.2%	0.6%
65+	100.0%	99.4%	0.0%	0.2%	0.0%	0.1%	0.0%	0.0%	0.1%	0.4%
85+	100.0%	98.3%	0.0%	0.8%	0.0%	0.8%	0.0%	0.0%	0.0%	0.8%
E. Population Growth										
2000-2010, Change										
0-19	30	4	6	9	2	5	0	0	2	11
20-64	416	396	6	10	1	8	0	0	1	4
65+	111	109	0	0	0	0	0	0	0	2
85+	63	61	0	1	0	1	0	0	0	1
Total	557	509	12	19	3	13	0	0	3	17
2000-2010, Pct Change										
0-19	3.2%	0.4%	300.0%	180.0%	0.0%	500.0%	0.0%	0.0%	50.0%	366.7%
20-64	19.7%	19.0%	600.0%	62.5%	33.3%	100.0%	0.0%	0.0%	20.0%	33.3%
65+	15.2%	15.0%	0.0%	0.0%	0.0%	0.0%	0.0%	0.0%	0.0%	200.0%
85+	110.5%	107.0%	0.0%	0.0%	0.0%	0.0%	0.0%	0.0%	0.0%	0.0%
Total	14.8%	13.7%	400.0%	82.6%	100.0%	130.0%	0.0%	0.0%	30.0%	106.3%

Source: Decennial Census 2010, 2000, American Community Survey 2008-2012

Prepared for the Pennsylvania State Library by The Pennsylvania State Data Center, 9/2014

# Reference Data

## Ralpho Township Public Library

	Total Population	White, Non- Hispanic	Black, Non- Hispanic	Other, Non- Hispanic	Detail for Other, Non-Hispanic					Hispanic or Latino
					AIAN	Asian	NHOPI	Some Other Race	Two or More Races	
F. Population by Library-Defined Age Groups, 2010										
0-5	235	226	1	3	0	1	0	0	2	5
6-10	264	250	3	7	1	4	0	0	2	4
11-13	169	164	1	2	0	1	0	0	1	2
14-18	250	243	3	2	1	0	0	0	1	2
19-32	530	511	3	9	0	8	0	0	1	7
33-45	679	662	2	9	2	4	0	0	3	6
46-64	1,355	1,341	2	8	2	4	0	0	2	4
65-84	719	716	0	1	0	0	0	0	1	2
85+	120	118	0	1	0	1	0	0	0	1
Total	4,321	4,231	15	42	6	23	0	0	13	33
G. Population by 5-Year Age Cohorts, 2010										
0-4	196	188	1	3	0	1	0	0	2	4
5-9	242	231	1	5	1	2	0	0	2	5
10-14	278	268	3	5	1	3	0	0	1	2
15-19	239	232	3	1	0	0	0	0	1	3
20-24	198	191	0	3	0	2	0	0	1	4
25-29	186	181	0	3	0	3	0	0	0	2
30-34	188	182	3	3	0	3	0	0	0	0
35-39	257	254	1	0	0	0	0	0	0	2
40-44	276	263	1	9	2	4	0	0	3	3
45-49	326	321	2	1	0	1	0	0	0	2
50-54	389	385	0	2	1	1	0	0	0	2
55-59	386	381	0	4	1	2	0	0	1	1
60-64	321	320	0	1	0	0	0	0	1	0
65-69	253	252	0	0	0	0	0	0	0	1
70-74	170	169	0	0	0	0	0	0	0	1
75-79	161	160	0	1	0	0	0	0	1	0
80-84	135	135	0	0	0	0	0	0	0	0
85-89	90	88	0	1	0	1	0	0	0	1
90-94	26	26	0	0	0	0	0	0	0	0
95-99	4	4	0	0	0	0	0	0	0	0
100+	0	0	0	0	0	0	0	0	0	0
Total	4,321	4,231	15	42	6	23	0	0	13	33

Source: Decennial Census 2010, 2000, American Community Survey 2008-2012  
 Prepared for the Pennsylvania State Library by The Pennsylvania State Data Center, 9/2014

# Reference Data

## Ralpho Township Public Library

### H. Income Distribution, 2008-2012

Range (in thousands)	Households	Pct of Total
<\$10K	205	10.8%
\$10K to <\$25K	231	12.1%
\$25K to <\$50K	370	19.4%
\$50K to <\$75K	399	20.9%
\$75K to <\$100K	327	17.2%
\$100K to <\$150K	207	10.9%
\$150K+	167	8.8%

### I. Household Type, 2010

Household Type	2000	2000pct	2010	2010pct
Total Households	1,497	100.0%	1,797	100.0%
Family Households	1,121	74.9%	1,295	72.1%
Husband-wife, no children w/children	407	27.2%	365	20.3%
Female head, no husband, w/ children	50	3.3%	64	3.6%
Male head, no wife, w/ children	20	1.3%	33	1.8%
Without children	644	43.0%	833	46.4%
Nonfamily households	376	25.1%	502	27.9%
Living alone	343	22.9%	427	23.8%
Other nonfamily	33	2.2%	75	4.2%

### J. Household Type by Race and Ethnicity, 2008-2012

Household Type	White, NH	Black, NH	Other, NH	Hispanic
Total Households	1,771	5	15	8
Husband wife family	61.7%	80.0%	60.0%	50.0%
Family with male head, no wife	3.2%	0.0%	0.0%	0.0%
family with female head, no husband	7.2%	0.0%	6.7%	12.5%
Living alone	23.7%	20.0%	33.3%	37.5%
Other nonfamily	4.2%	0.0%	0.0%	0.0%

### K. Poverty, 2008-2012

Families	Poverty	PA
All families	8.5%	9.1%
Families w/ related children	14.8%	15.3%
Female householder, no husband present	46.9%	28.8%
Female householder, no husband present, w/ related children	51.1%	39.2%
All people	8.3%	13.1%
Under 18 years	10.1%	18.4%
18 to 64 years	6.0%	12.3%
65 years and over	12.7%	8.4%

### L. Educational Attainment by Race and Ethnicity, 2008-2012

Education Level	White, NH	Black	Other	Hispanic	Total
Population 25 years and over	3,254	0	3	0	3,257
Less than high school	9.5%	0.0%	0%	0.0%	9.5%
High school graduate (includes equivalency	43.8%	0.0%	0%	0.0%	43.8%
Some college or associates degree	19.3%	0.0%	100%	0.0%	19.4%
Bachelors degree or higher	27.4%	0.0%	0%	0.0%	27.3%

### M. Occupation, 2008-2012

Occupation	Estimate	Percent
Civilian population age 16 years and over	1,966	100.0%
Management, professional, and related occupations	889	45.2%
Service occupations	266	13.5%
Sales and office occupations	371	18.9%
Farming, fishing, and forestry occupations	14	0.7%
Construction, extraction, maintenance, and repair occupations	173	8.8%
Production, transportation, and material moving occupations	253	12.9%

### N. Class of Worker, 2008-2012

Occupation	Estimate	Percent
Civilian population age 16 years and over	1,966	100.0%
Private, for profit, wage and salary employee	1,203	61.2%
Private, not for profit, wage and salary employee	315	16.0%
Private, for profit, wage and salary self-employed in own business	40	2.0%
Government workers	347	17.7%
Self-employed in own not incorporated business	61	3.1%
Unpaid family workers in family business	0	0.0%