

Demographic Profile Scottdale Public Library

Population Growth: The total population of the Scottdale Public Library service area decreased by -2.8 percent over the past decade to 15,199; this decline rate was lower than the statewide rate of 3.4 percent.

Age and Sex: In 2010, the Scottdale Public Library service area had a total population of 15,199 - 7,317 males (48.1 percent) and 7,882 females (51.9 percent). The age structure of the population in 2010 was as follows: 22.3 percent of the population was under 20 years old, 59.5 percent was 20 to 64 years old and 18.1 percent was 65 years or older.

Race and Ethnicity: For people reporting one race alone, not of Hispanic ethnicity, 97.0 percent were White; .9 percent were Black or African American; 1.4 percent were Other Race Alone.¹ A total of 116 or .8 percent of the population were Hispanic.²

Households: In 2010, there were 6,461 households in the Scottdale Public Library service area. The average household size was 2.34 people. Families made up 66.2 percent of the households. This figure includes both families with (24.3 percent) and without (41.8 percent) children. Of families with children less than 18 years old, 16.4 percent were married-couple families, 5.3 percent were female householder families with no husband present, and the remaining (2.6 percent) were male-headed households with no wife present.

Education: The educational attainment of the population 25 years and over was lower in the Scottdale Public Library service area than in Pennsylvania. During the period 2008-2012, 13.2 percent of residents had earned a Bachelor's degree or higher, compared with 27.0 percent statewide. A total of 1,173 or 10.4 percent had not completed high school, compared with 11.7 percent for the commonwealth as a whole.

Income and Poverty: Households with incomes of less than \$25,000 (29.7 percent) made up the largest percent of households in the Scottdale Public Library service area in 2008-2012. For comparison, 23.6 percent of commonwealth households were in this range during the period.

In 2008-2012, the overall poverty rate for the Scottdale Public Library service area was lower than Pennsylvania (13.0 percent compared to 13.1 percent). The poverty rate for the population under 18 years of age was 17.0 percent, compared with 12.1 percent of people 18 to 64 years and 11.9 percent for those aged 65 years and over. A total of 451 or 10.4 percent of all families had incomes below poverty level. In 2008-2012, 16.9 percent of families with related children and 39.8 percent of families with a female householder and no husband with related children present had incomes below the poverty level.

Class of Worker and Occupation: In 2008-2012, 85.8 percent of the workforce was private wage and salary workers; 8.0 percent were federal, state, or local government workers; and 6.2 percent were self-employed in their own (not incorporated) business.

The top occupation group for the civilian employed population 16 years and over in the Scottdale Public Library service area in 2008-2012 was Management, business, science, and arts (24.6 percent).

¹ Other race includes those who identified themselves as American Indian/Alaska Native, Asian, Native Hawaiian/Other Pacific Islander, Some Other Race and Two or More Races on the 2010 Census form.

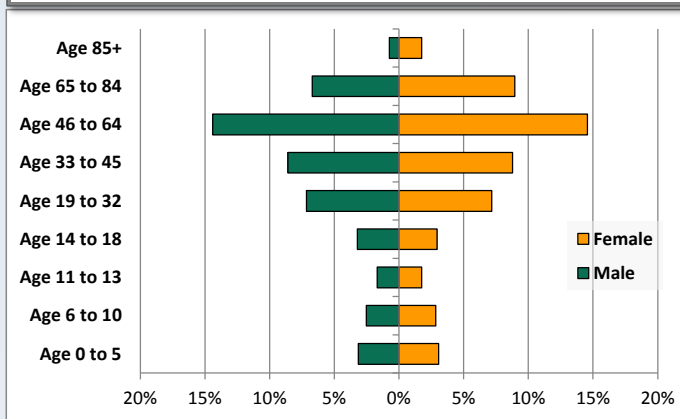
² People of Hispanic origin may be of any race.

Demographic Profile

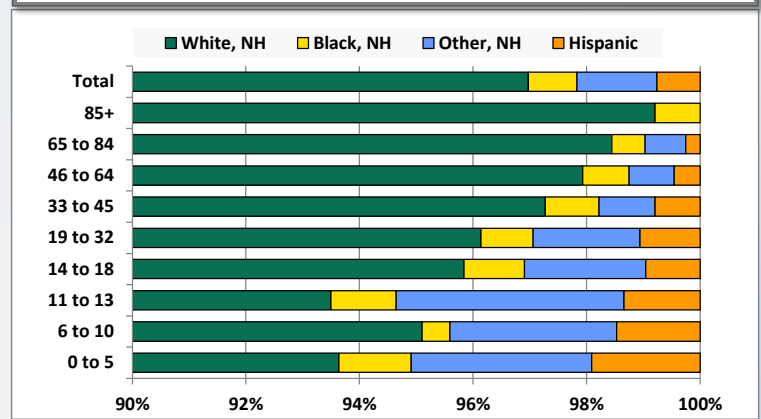
Scottsdale Public Library

Key Indicators		
	2000	2010
Population Growth		
Total Population	15,639	15,199
10-Year Growth	N/A	-2.8%
Diversity		
White Alone, Non-Hispanic	98.1%	97.0%
Black Alone, Non-Hispanic	0.9%	0.9%
Other Race Alone, Non-Hispanic	0.7%	1.4%
Percent Hispanic	0.3%	0.8%
Aging		
Percent 65 Years and Over	18.2%	18.1%
Households		
Percent Married Couple with Own Children	21.9%	16.4%
Percent Living Alone	26.8%	29.0%

Population by Library-Defined Age Group, 2010



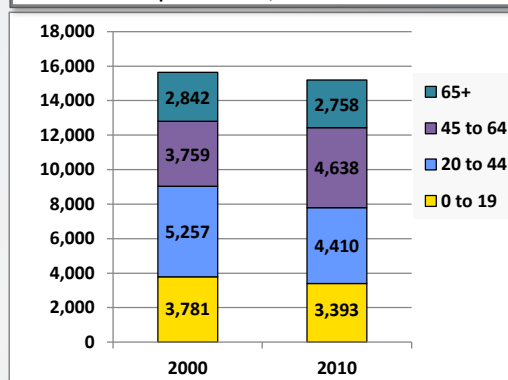
Race/Ethnicity by Library-Defined Age Group, 2010



Population Growth by Library-Defined Age Group, 2000 to 2010

Age Group	2010	Change	
		Numeric	Percent
Total	15,199	-440	-2.8%
85+	378	79	26.4%
65 to 84	2,380	-163	-6.4%
46 to 64	4,404	874	24.8%
33 to 45	2,639	-468	-15.1%
19 to 32	2,177	-326	-13.0%
14 to 18	938	-88	-8.6%
11 to 13	523	-43	-7.6%
6 to 10	817	-220	-21.2%
0 to 5	943	-85	-8.3%

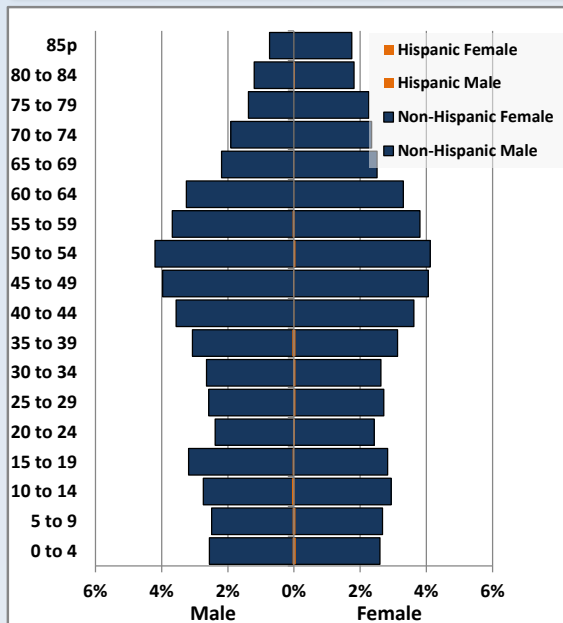
Population Total, 2000 and 2010



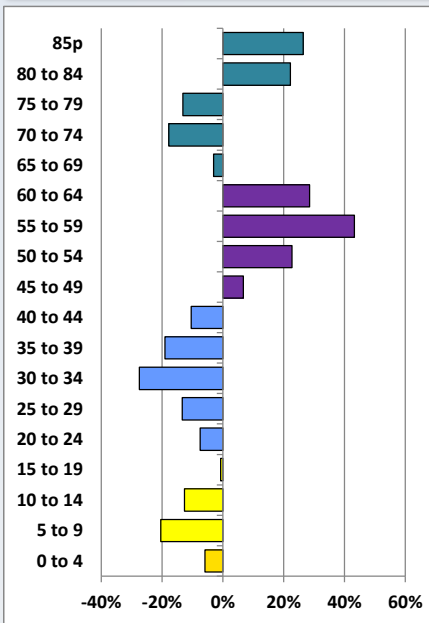
Demographic Profile

Scottsdale Public Library

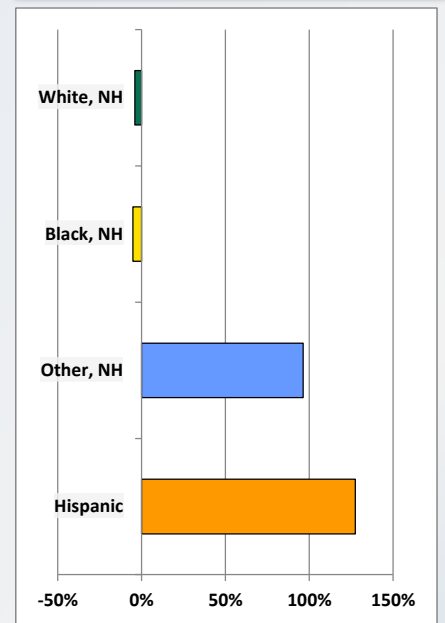
Population by 5-Year Age Cohorts



Pop Change by Age, 2000 to 2010

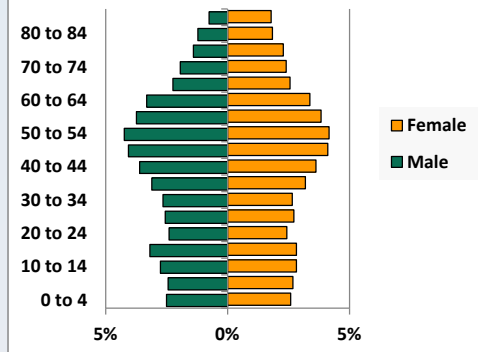


Pop Change by Race/Ethnicity, 2000 to 2010

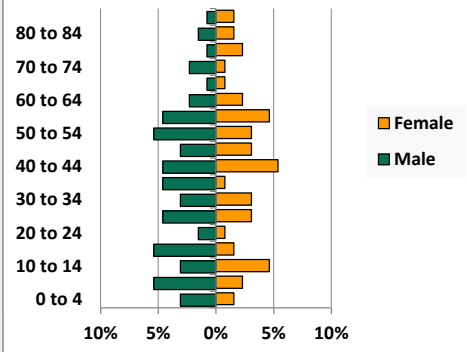


Population by Age, Race and Ethnicity 2010

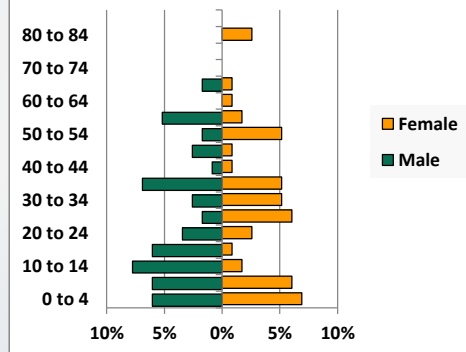
White, Not Hispanic



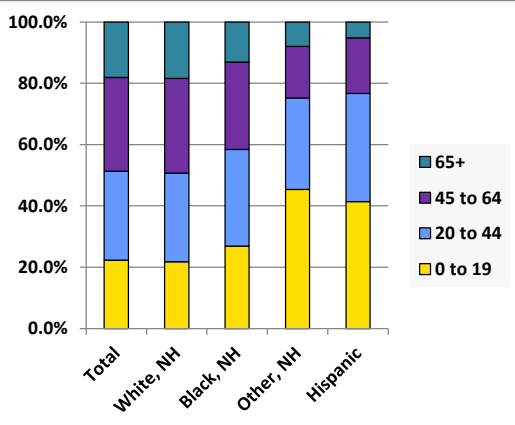
Black, Non-Hispanic



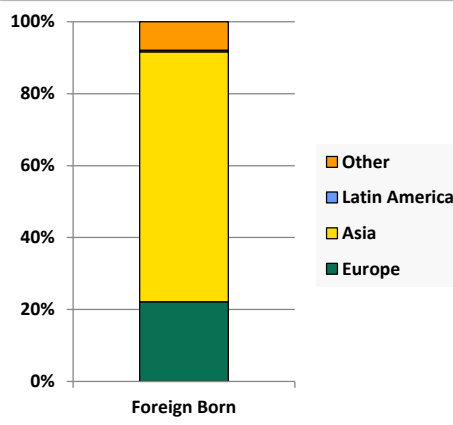
Hispanic



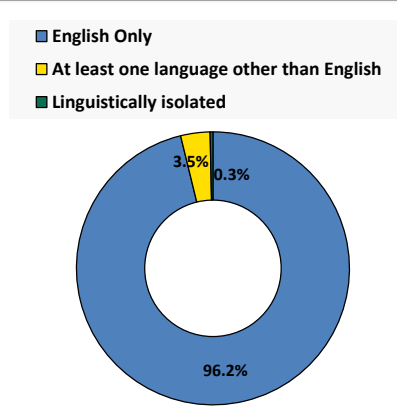
Age by Race and Ethnicity, 2010



Foreign Born, 2010



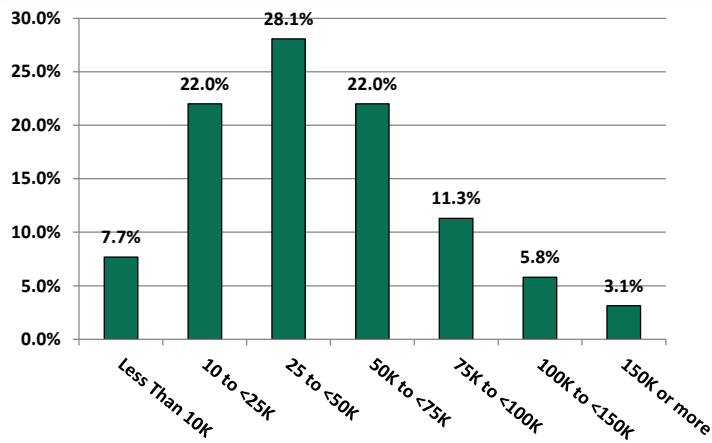
Household Language, 2010



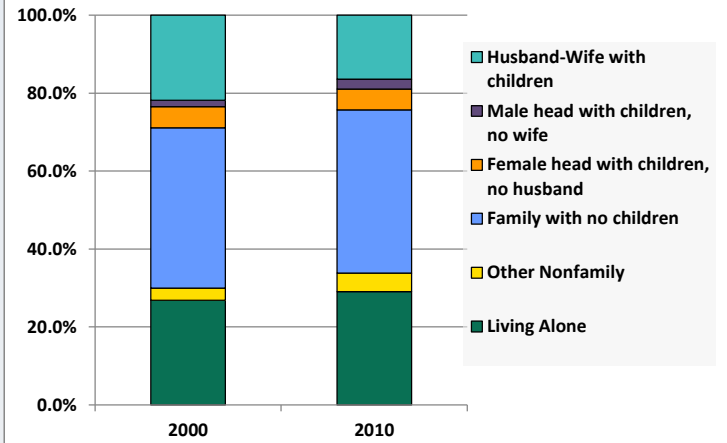
Demographic Profile

Scottsdale Public Library

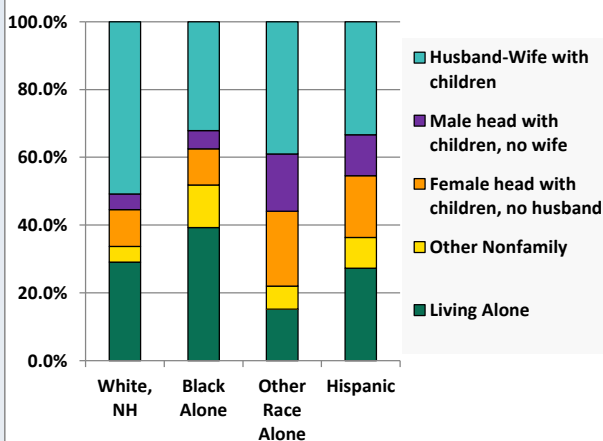
Household Income Distribution, 2008-2012



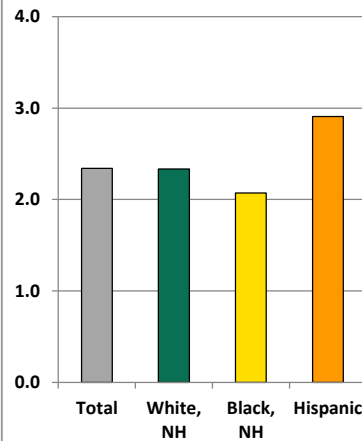
Household Type, 2000 and 2010



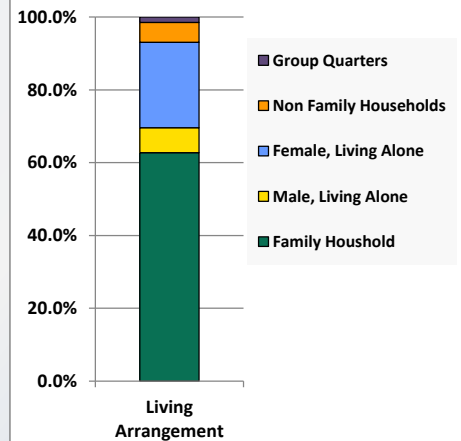
Household Type by Race/Ethnicity, 2010



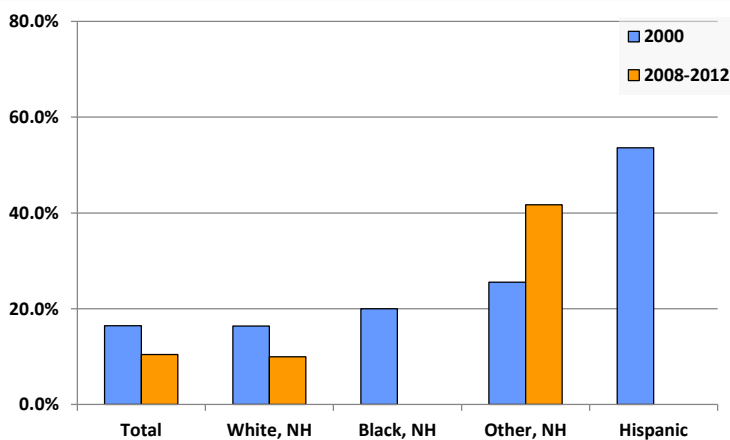
Average Household Size, 2010



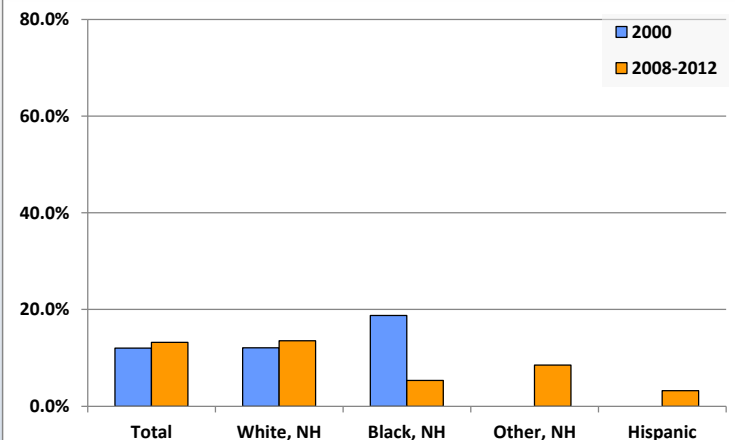
Living Arrangements 65+, 2008-2012



Percent of Adults that Did Not Complete High School



Percent of Adults Who Attained a Bachelor's Degree or Higher



Reference Data

Scottdale Public Library

	Total Population	White, Non- Hispanic	Black, Non- Hispanic	Other, Non- Hispanic	Detail for Other, Non-Hispanic					
					AIAN	Asian	NHOPI	Some Other Race	Two or More Races	Hispanic or Latino
A. Total Population										
2000 Total	15,639	15,342	137	109	13	21	6	9	60	51
2000 pct of Total	100.0%	98.1%	0.9%	0.7%	0.1%	0.1%	0.0%	0.1%	0.4%	0.3%
2010 Total	15,199	14,739	130	214	12	49	3	6	144	116
2010 pct of Total	100.0%	97.0%	0.9%	1.4%	0.1%	0.3%	0.0%	0.0%	0.9%	0.8%
B. Population by Major Age Groups by Race and Ethnicity										
2000										
0-19	3,781	3,675	43	47	3	5	1	7	31	16
20-64	9,016	8,864	73	53	9	14	4	2	24	26
65+	2,842	2,803	21	9	1	2	1	0	5	9
85+	299	295	2	1	0	0	0	0	1	1
2010										
0-19	3,393	3,213	35	97	2	13	0	4	78	48
20-64	9,048	8,808	78	100	9	30	3	1	57	62
65+	2,758	2,718	17	17	1	6	0	1	9	6
85+	378	375	3	0	0	0	0	0	0	0
C. Age Mix for Each Racial and Ethnic Group										
2000										
0-19	24.2%	24.0%	31.4%	43.1%	23.1%	23.8%	16.7%	77.8%	51.7%	31.4%
20-64	57.7%	57.8%	53.3%	48.6%	69.2%	66.7%	66.7%	22.2%	40.0%	51.0%
65+	18.2%	18.3%	15.3%	8.3%	7.7%	9.5%	16.7%	0.0%	8.3%	17.6%
85+	1.9%	1.9%	1.5%	0.9%	0.0%	0.0%	0.0%	0.0%	1.7%	2.0%
2010										
0-19	22.3%	21.8%	26.9%	45.3%	16.7%	26.5%	0.0%	66.7%	54.2%	41.4%
20-64	59.5%	59.8%	60.0%	46.7%	75.0%	61.2%	100.0%	16.7%	39.6%	53.4%
65+	18.1%	18.4%	13.1%	7.9%	8.3%	12.2%	0.0%	16.7%	6.3%	5.2%
85+	2.5%	2.5%	2.3%	0.0%	0.0%	0.0%	0.0%	0.0%	0.0%	0.0%
D. Racial and Ethnic Composition of Each Age Group										
2000										
0-19	100.0%	97.2%	1.1%	1.2%	0.1%	0.1%	0.0%	0.2%	0.8%	0.4%
20-64	100.0%	98.3%	0.8%	0.6%	0.1%	0.2%	0.0%	0.0%	0.3%	0.3%
65+	100.0%	98.6%	0.7%	0.3%	0.0%	0.1%	0.0%	0.0%	0.2%	0.3%
85+	100.0%	98.7%	0.7%	0.3%	0.0%	0.0%	0.0%	0.0%	0.3%	0.3%
2010										
0-19	100.0%	94.7%	1.0%	2.9%	0.1%	0.4%	0.0%	0.1%	2.3%	1.4%
20-64	100.0%	97.3%	0.9%	1.1%	0.1%	0.3%	0.0%	0.0%	0.6%	0.7%
65+	100.0%	98.5%	0.6%	0.6%	0.0%	0.2%	0.0%	0.0%	0.3%	0.2%
85+	100.0%	99.2%	0.8%	0.0%	0.0%	0.0%	0.0%	0.0%	0.0%	0.0%
E. Population Growth										
2000-2010, Change										
0-19	-388	-462	-8	50	-1	8	-1	-3	47	32
20-64	32	-56	5	47	0	16	-1	-1	33	36
65+	-84	-85	-4	8	0	4	-1	1	4	-3
85+	79	80	1	-1	0	0	0	0	-1	-1
Total	-440	-603	-7	105	-1	28	-3	-3	84	65
2000-2010, Pct Change										
0-19	-10.3%	-12.6%	-18.6%	106.4%	-33.3%	160.0%	-100.0%	-42.9%	151.6%	200.0%
20-64	0.4%	-0.6%	6.8%	88.7%	0.0%	114.3%	-25.0%	-50.0%	137.5%	138.5%
65+	-3.0%	-3.0%	-19.0%	88.9%	0.0%	200.0%	-100.0%	0.0%	80.0%	-33.3%
85+	26.4%	27.1%	50.0%	-100.0%	0.0%	0.0%	0.0%	0.0%	-100.0%	-100.0%
Total	-2.8%	-3.9%	-5.1%	96.3%	-7.7%	133.3%	-50.0%	-33.3%	140.0%	127.5%

Source: Decennial Census 2010, 2000, American Community Survey 2008-2012

Prepared for the Pennsylvania State Library by The Pennsylvania State Data Center, 9/2014

Reference Data

Scottsdale Public Library

					Detail for Other, Non-Hispanic					Hispanic or Latino
	Total Population	White, Non-Hispanic	Black, Non-Hispanic	Other, Non-Hispanic	AIAN	Asian	NHOPI	Some Other	Two or More	
								Race	Races	
F. Population by Library-Defined Age Groups, 2010										
0-5	943	883	12	30	0	3	0	1	26	18
6-10	817	777	4	24	0	3	0	1	20	12
11-13	523	489	6	21	1	5	0	0	15	7
14-18	938	899	10	20	1	2	0	2	15	9
19-32	2,177	2,093	20	41	4	10	0	0	27	23
33-45	2,639	2,567	25	26	1	7	2	1	15	21
46-64	4,404	4,313	36	35	4	13	1	0	17	20
65-84	2,380	2,343	14	17	1	6	0	1	9	6
85+	378	375	3	0	0	0	0	0	0	0
Total	15,199	14,739	130	214	12	49	3	6	144	116
G. Population by 5-Year Age Cohorts, 2010										
0-4	798	750	6	27	0	1	0	1	25	15
5-9	798	754	10	20	0	4	0	1	15	14
10-14	874	822	10	31	1	6	0	0	24	11
15-19	923	887	9	19	1	2	0	2	14	8
20-24	737	711	3	16	2	2	0	0	12	7
25-29	812	777	10	16	2	6	0	0	8	9
30-34	810	782	8	11	0	3	0	0	8	9
35-39	957	928	7	8	0	2	0	1	5	14
40-44	1,094	1,066	13	13	1	4	2	0	6	2
45-49	1,225	1,204	8	9	1	3	1	0	4	4
50-54	1,271	1,238	11	14	1	6	0	0	7	8
55-59	1,145	1,116	12	9	2	4	0	0	3	8
60-64	997	986	6	4	0	0	0	0	4	1
65-69	718	708	2	5	0	0	0	0	5	3
70-74	647	641	4	2	1	0	0	1	0	0
75-79	553	543	4	6	0	3	0	0	3	0
80-84	462	451	4	4	0	3	0	0	1	3
85-89	274	272	2	0	0	0	0	0	0	0
90-94	90	89	1	0	0	0	0	0	0	0
95-99	12	12	0	0	0	0	0	0	0	0
100+	2	2	0	0	0	0	0	0	0	0
Total	15,199	14,739	130	214	12	49	3	6	144	116

Source: Decennial Census 2010, 2000, American Community Survey 2008-2012

Prepared for the Pennsylvania State Library by The Pennsylvania State Data Center, 9/2014

Reference Data

Scottdale Public Library

H. Income Distribution, 2008-2012

Range (in thousands)	Households	Pct of Total
<\$10K	510	7.7%
\$10K to <\$25K	1,461	22.0%
\$25K to <\$50K	1,864	28.1%
\$50K to <\$75K	1,461	22.0%
\$75K to <\$100K	751	11.3%
\$100K to <\$150K	385	5.8%
\$150K+	208	3.1%

I. Household Type, 2010

Household Type	2000	2000pct	2010	2010pct
Total Households	6,397	100.0%	6,461	100.0%
Family Households	4,478	70.0%	4,275	66.2%
Husband-wife, no children w/children	1,398	21.9%	1,060	16.4%
Female head, no husband, w/ children	346	5.4%	345	5.3%
Male head, no wife, w/ children	106	1.7%	167	2.6%
Without children	2,628	41.1%	2,703	41.8%
Nonfamily households	1,919	30.0%	2,186	33.8%
Living alone	1,717	26.8%	1,876	29.0%
Other nonfamily	202	3.2%	310	4.8%

J. Household Type by Race and Ethnicity, 2008-2012

Household Type	White, NH	Black, NH	Other, NH	Hispanic
Total Households	6,322	56	59	33
Husband wife family	50.8%	32.1%	39.0%	33.3%
Family with male head, no wife	4.7%	5.4%	16.9%	12.1%
family with female head, no husband	10.8%	10.7%	22.0%	18.2%
Living alone	29.1%	39.3%	15.3%	27.3%
Other nonfamily	4.7%	12.5%	6.8%	9.1%

K. Poverty, 2008-2012

Families	Poverty	PA
All families	10.4%	9.1%
Families w/ related children	16.9%	15.3%
Female householder, no husband present	30.9%	28.8%
Female householder, no husband present, w/ related children	39.8%	39.2%
All people	13.0%	13.1%
Under 18 years	17.0%	18.4%
18 to 64 years	12.1%	12.3%
65 years and over	11.9%	8.4%

L. Educational Attainment by Race and Ethnicity, 2008-2012

Education Level	White, NH	Black	Other	Hispanic	Total
Population 25 years and over	10,793	206	235	31	11,264
Less than high school	10.0%	0.0%	42%	0.0%	10.4%
High school graduate (includes equivalency	49.0%	46.1%	15%	54.8%	48.2%
Some college or associates degree	27.5%	48.5%	34%	41.9%	28.1%
Bachelors degree or higher	13.5%	5.3%	9%	3.2%	13.2%

M. Occupation, 2008-2012

Occupation	Estimate	Percent
Civilian population age 16 years and over	7,094	100.0%
Management, professional, and related occupations	1,745	24.6%
Service occupations	1,124	15.8%
Sales and office occupations	1,649	23.2%
Farming, fishing, and forestry occupations	29	0.4%
Construction, extraction, maintenance, and repair occupations	819	11.5%
Production, transportation, and material moving occupations	1,728	24.4%

N. Class of Worker, 2008-2012

Occupation	Estimate	Percent
Civilian population age 16 years and over	7,094	100.0%
Private, for profit, wage and salary employee	5,436	76.6%
Private, not for profit, wage and salary employee	500	7.0%
Private, for profit, wage and salary self-employed in own business	148	2.1%
Government workers	568	8.0%
Self-employed in own not incorporated business	442	6.2%
Unpaid family workers in family business	0	0.0%