

## Demographic Profile Sewickley Township Public Library

**Population Growth:** The total population of the Sewickley Township Public Library service area decreased by - 3.8 percent over the past decade to 5,996; this decline rate was lower than the statewide rate of 3.4 percent.

**Age and Sex:** In 2010, the Sewickley Township Public Library service area had a total population of 5,996 - 2,975 males (49.6 percent) and 3,021 females (50.4 percent). The age structure of the population in 2010 was as follows: 22.3 percent of the population was under 20 years old, 59.9 percent was 20 to 64 years old and 17.9 percent was 65 years or older.

**Race and Ethnicity:** For people reporting one race alone, not of Hispanic ethnicity, 97.9 percent were White; .4 percent were Black or African American; 1.2 percent were Other Race Alone.<sup>1</sup> A total of 33 or .6 percent of the population were Hispanic.<sup>2</sup>

**Households:** In 2010, there were 2,524 households in the Sewickley Township Public Library service area. The average household size was 2.37 people. Families made up 68.2 percent of the households. This figure includes both families with (24.5 percent) and without (43.7 percent) children. Of families with children less than 18 years old, 17.5 percent were married-couple families, 4.9 percent were female householder families with no husband present, and the remaining (2.1 percent) were male-headed households with no wife present.

**Education:** The educational attainment of the population 25 years and over was lower in the Sewickley Township Public Library service area than in Pennsylvania. During the period 2008-2012, 16.5 percent of residents had earned a Bachelor's degree or higher, compared with 27.0 percent statewide. A total of 457 or 11.0 percent had not completed high school, compared with 11.7 percent for the commonwealth as a whole.

**Income and Poverty:** Households with incomes of \$25,000 to \$49,999 (28.5 percent) made up the largest percent of households in the Sewickley Township Public Library service area in 2008-2012. For comparison, 24.4 percent of commonwealth households were in this range during the period.

In 2008-2012, the overall poverty rate for the Sewickley Township Public Library service area was lower than Pennsylvania (8.9 percent compared to 13.1 percent). The poverty rate for the population under 18 years of age was 12.3 percent, compared with 9.2 percent of people 18 to 64 years and 3.7 percent for those aged 65 years and over. A total of 114 or 6.7 percent of all families had incomes below poverty level. In 2008-2012, 8.3 percent of families with related children and 31.0 percent of families with a female householder and no husband with related children present had incomes below the poverty level.

**Class of Worker and Occupation:** In 2008-2012, 85.3 percent of the workforce was private wage and salary workers; 5.5 percent were federal, state, or local government workers; and 9.2 percent were self-employed in their own (not incorporated) business.

The top occupation group for the civilian employed population 16 years and over in the Sewickley Township Public Library service area in 2008-2012 was Management, business, science, and arts (24.2 percent).

---

<sup>1</sup> Other race includes those who identified themselves as American Indian/Alaska Native, Asian, Native Hawaiian/Other Pacific Islander, Some Other Race and Two or More Races on the 2010 Census form.

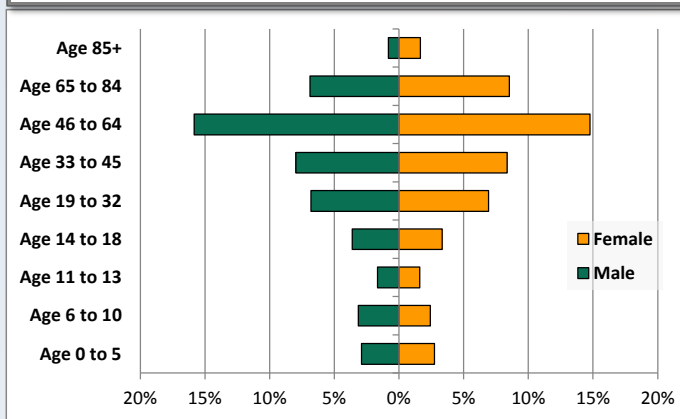
<sup>2</sup> People of Hispanic origin may be of any race.

# Demographic Profile

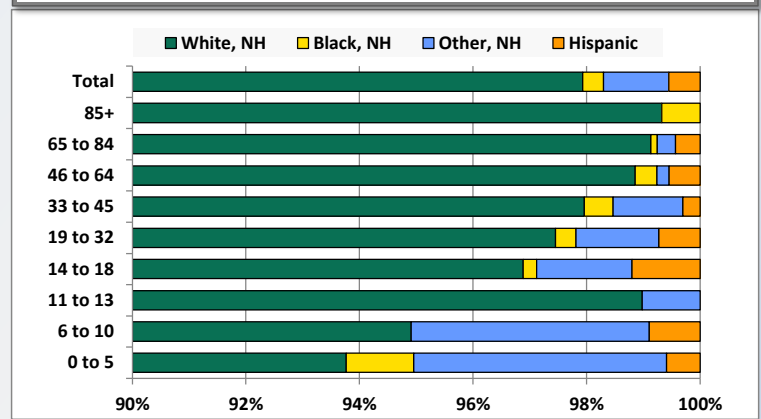
Sewickley Township Public Library

Key Indicators		
	2000	2010
<b>Population Growth</b>		
Total Population	6,230	5,996
10-Year Growth	N/A	-3.8%
<b>Diversity</b>		
White Alone, Non-Hispanic	98.6%	97.9%
Black Alone, Non-Hispanic	0.2%	0.4%
Other Race Alone, Non-Hispanic	0.6%	1.2%
Percent Hispanic	0.6%	0.6%
<b>Aging</b>		
Percent 65 Years and Over	16.9%	17.9%
<b>Households</b>		
Percent Married Couple with Own Children	21.6%	17.5%
Percent Living Alone	25.3%	27.4%

Population by Library-Defined Age Group, 2010



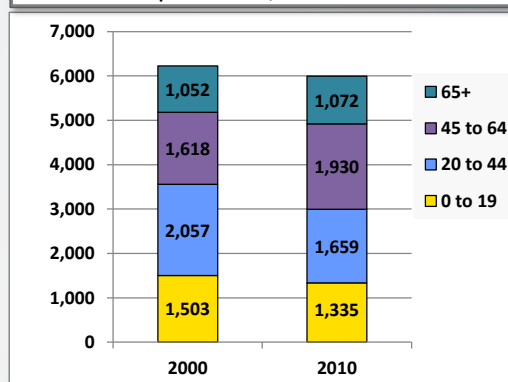
Race/Ethnicity by Library-Defined Age Group, 2010



Population Growth by Library-Defined Age Group, 2000 to 2010

Age Group	2010	Change	
		Numeric	Percent
Total	5,996	-234	-3.8%
85+	148	46	45.1%
65 to 84	924	-26	-2.7%
46 to 64	1,836	307	20.1%
33 to 45	980	-324	-24.8%
19 to 32	824	-85	-9.4%
14 to 18	417	10	2.5%
11 to 13	196	-48	-19.7%
6 to 10	334	-75	-18.3%
0 to 5	337	-39	-10.4%

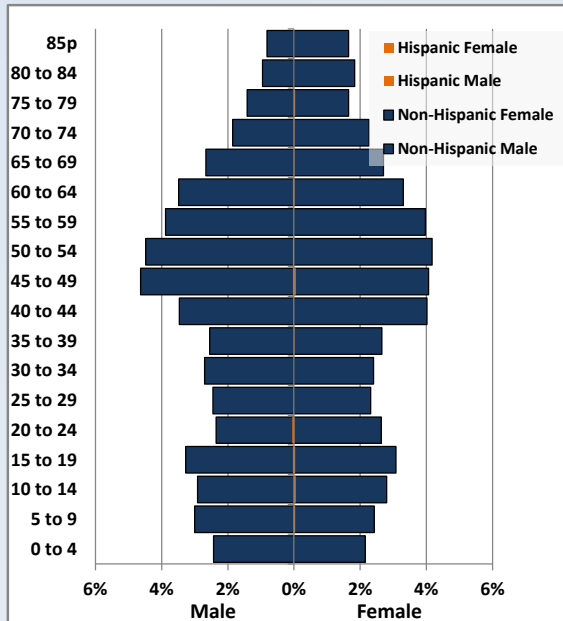
Population Total, 2000 and 2010



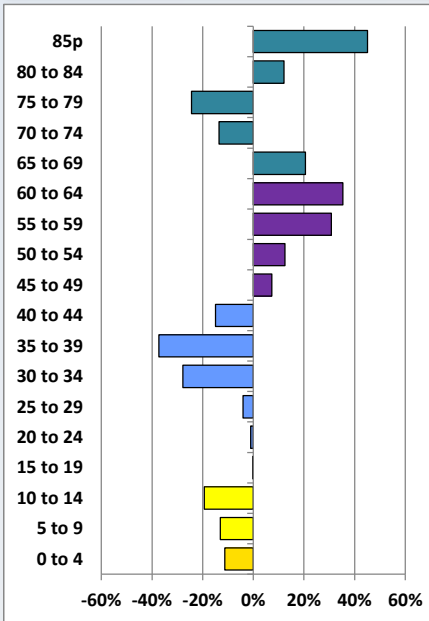
# Demographic Profile

Sewickley Township Public Library

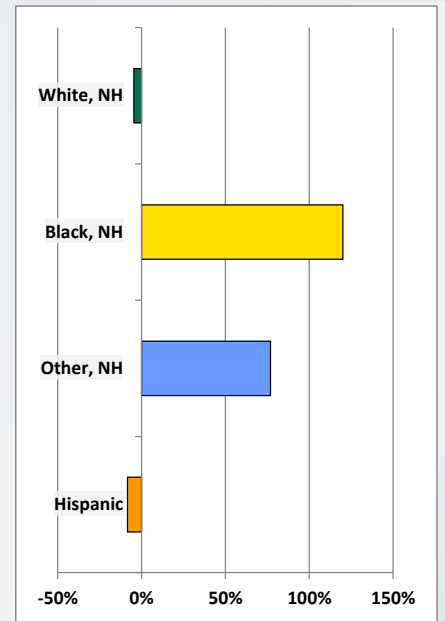
Population by 5-Year Age Cohorts



Pop Change by Age, 2000 to 2010

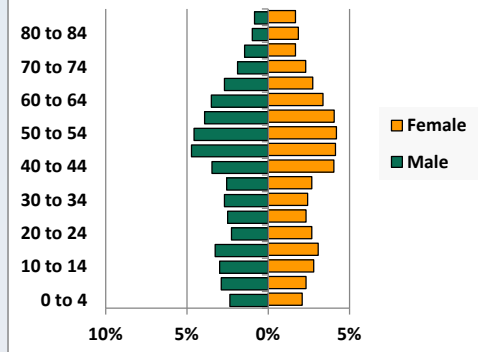


Pop Change by Race/Ethnicity, 2000 to 2010

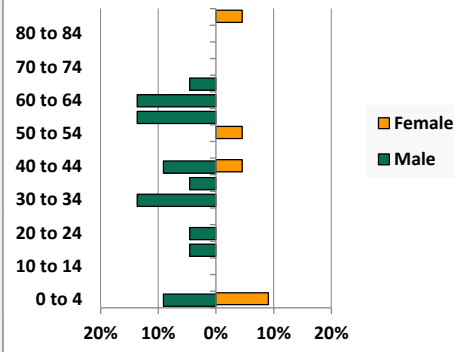


Population by Age, Race and Ethnicity 2010

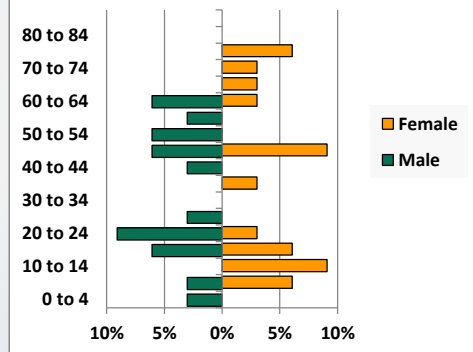
White, Not Hispanic



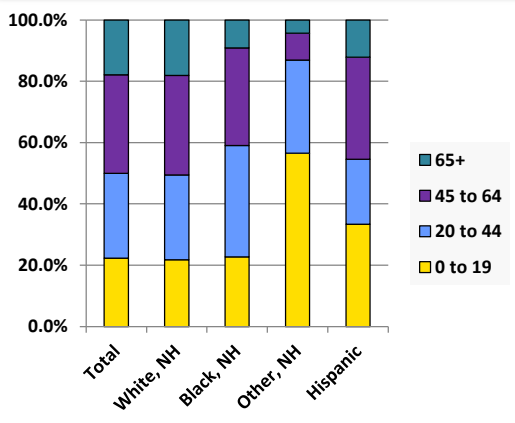
Black, Non-Hispanic



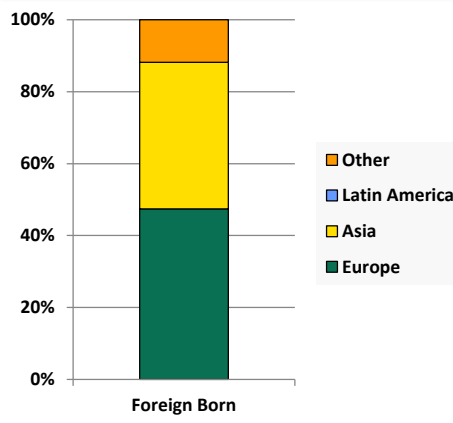
Hispanic



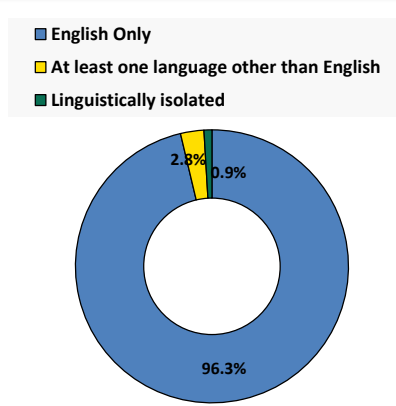
Age by Race and Ethnicity, 2010



Foreign Born, 2010



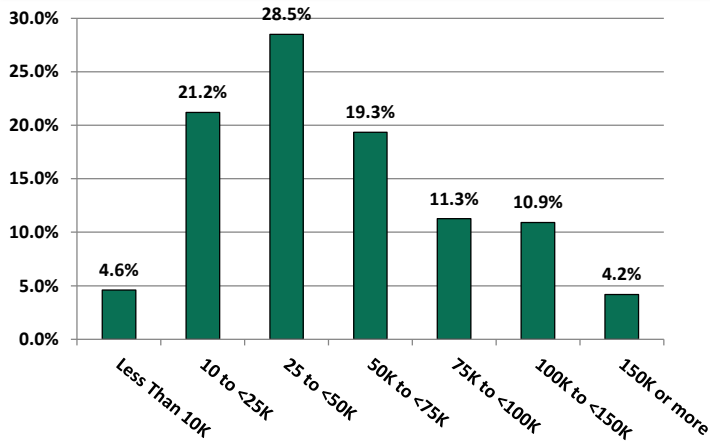
Household Language, 2010



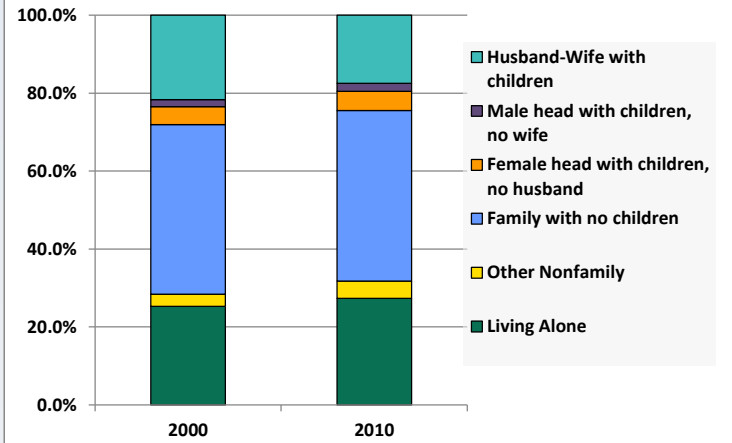
# Demographic Profile

Sewickley Township Public Library

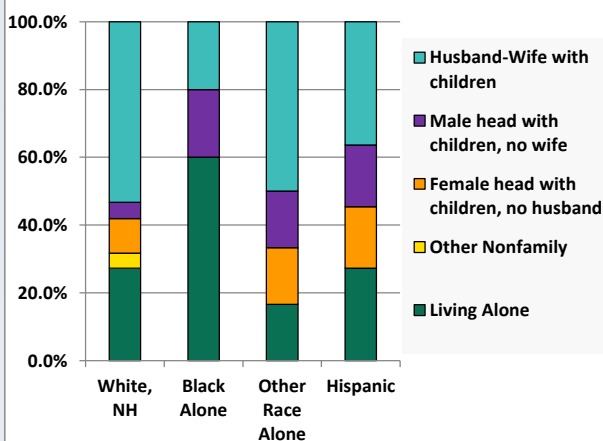
Household Income Distribution, 2008-2012



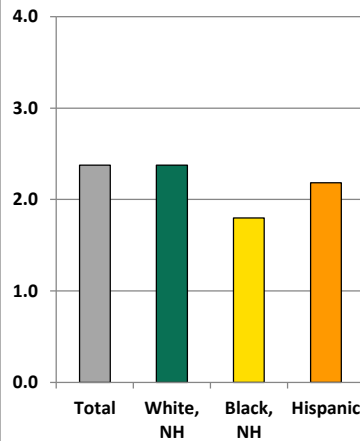
Household Type, 2000 and 2010



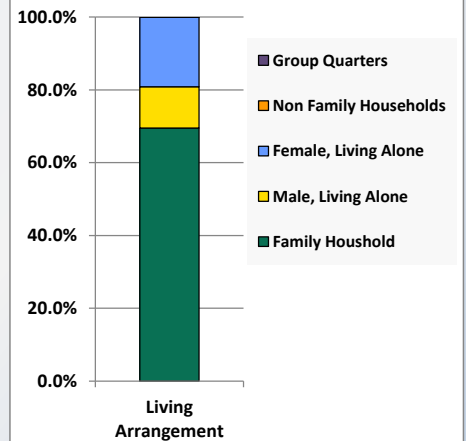
Household Type by Race/Ethnicity, 2010



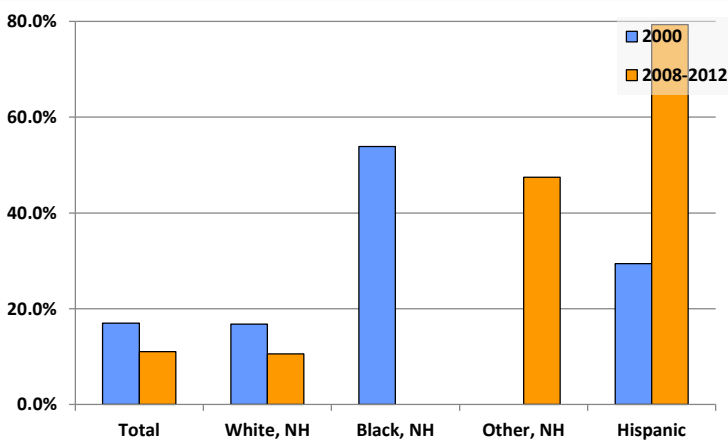
Average Household Size, 2010



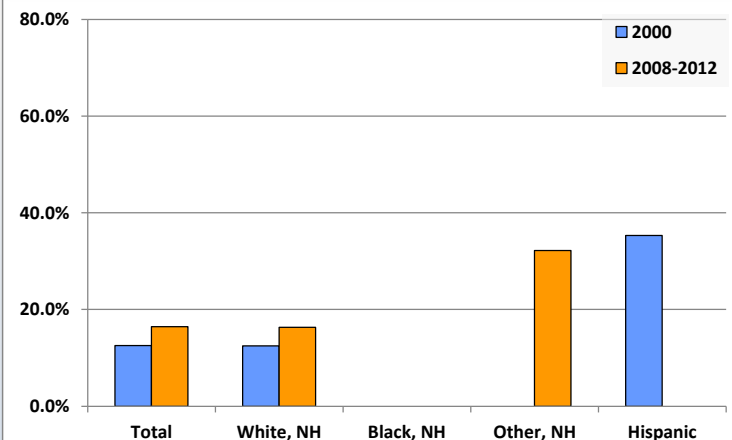
Living Arrangements 65+, 2008-2012



Percent of Adults that Did Not Complete High School



Percent of Adults Who Attained a Bachelor's Degree or Higher



# Reference Data

## Sewickley Township Public Library

	Total Population	White, Non- Hispanic	Black, Non- Hispanic	Other, Non- Hispanic	Detail for Other, Non-Hispanic					Hispanic or Latino
					AIAN	Asian	NHOPI	Some Other Race	Two or More Races	
A. Total Population										
2000 Total	6,230	6,145	10	39	4	10	1	3	21	36
2000 pct of Total	100.0%	98.6%	0.2%	0.6%	0.1%	0.2%	0.0%	0.0%	0.3%	0.6%
2010 Total	5,996	5,872	22	69	0	18	0	5	46	33
2010 pct of Total	100.0%	97.9%	0.4%	1.2%	0.0%	0.3%	0.0%	0.1%	0.8%	0.6%
B. Population by Major Age Groups by Race and Ethnicity										
2000										
0-19	1,503	1,469	1	19	1	6	0	1	11	14
20-64	3,675	3,633	7	18	3	3	0	2	10	17
65+	1,052	1,043	2	2	0	1	1	0	0	5
85+	102	101	0	0	0	0	0	0	0	1
2010										
0-19	1,335	1,280	5	39	0	5	0	4	30	11
20-64	3,589	3,529	15	27	0	11	0	1	15	18
65+	1,072	1,063	2	3	0	2	0	0	1	4
85+	148	147	1	0	0	0	0	0	0	0
C. Age Mix for Each Racial and Ethnic Group										
2000										
0-19	24.1%	23.9%	10.0%	48.7%	25.0%	60.0%	0.0%	33.3%	52.4%	38.9%
20-64	59.0%	59.1%	70.0%	46.2%	75.0%	30.0%	0.0%	66.7%	47.6%	47.2%
65+	16.9%	17.0%	20.0%	5.1%	0.0%	10.0%	100.0%	0.0%	0.0%	13.9%
85+	1.6%	1.6%	0.0%	0.0%	0.0%	0.0%	0.0%	0.0%	0.0%	2.8%
2010										
0-19	22.3%	21.8%	22.7%	56.5%	0.0%	27.8%	0.0%	80.0%	65.2%	33.3%
20-64	59.9%	60.1%	68.2%	39.1%	0.0%	61.1%	0.0%	20.0%	32.6%	54.5%
65+	17.9%	18.1%	9.1%	4.3%	0.0%	11.1%	0.0%	0.0%	2.2%	12.1%
85+	2.5%	2.5%	4.5%	0.0%	0.0%	0.0%	0.0%	0.0%	0.0%	0.0%
D. Racial and Ethnic Composition of Each Age Group										
2000										
0-19	100.0%	97.7%	0.1%	1.3%	0.1%	0.4%	0.0%	0.1%	0.7%	0.9%
20-64	100.0%	98.9%	0.2%	0.5%	0.1%	0.1%	0.0%	0.1%	0.3%	0.5%
65+	100.0%	99.1%	0.2%	0.2%	0.0%	0.1%	0.1%	0.0%	0.0%	0.5%
85+	100.0%	99.0%	0.0%	0.0%	0.0%	0.0%	0.0%	0.0%	0.0%	1.0%
2010										
0-19	100.0%	95.9%	0.4%	2.9%	0.0%	0.4%	0.0%	0.3%	2.2%	0.8%
20-64	100.0%	98.3%	0.4%	0.8%	0.0%	0.3%	0.0%	0.0%	0.4%	0.5%
65+	100.0%	99.2%	0.2%	0.3%	0.0%	0.2%	0.0%	0.0%	0.1%	0.4%
85+	100.0%	99.3%	0.7%	0.0%	0.0%	0.0%	0.0%	0.0%	0.0%	0.0%
E. Population Growth										
2000-2010, Change										
0-19	-168	-189	4	20	-1	-1	0	3	19	-3
20-64	-86	-104	8	9	-3	8	0	-1	5	1
65+	20	20	0	1	0	1	-1	0	1	-1
85+	46	46	1	0	0	0	0	0	0	-1
Total	-234	-273	12	30	-4	8	-1	2	25	-3
2000-2010, Pct Change										
0-19	-11.2%	-12.9%	400.0%	105.3%	-100.0%	-16.7%	0.0%	300.0%	172.7%	-21.4%
20-64	-2.3%	-2.9%	114.3%	50.0%	-100.0%	266.7%	0.0%	-50.0%	50.0%	5.9%
65+	1.9%	1.9%	0.0%	50.0%	0.0%	100.0%	-100.0%	0.0%	0.0%	-20.0%
85+	45.1%	45.5%	0.0%	0.0%	0.0%	0.0%	0.0%	0.0%	0.0%	-100.0%
Total	-3.8%	-4.4%	120.0%	76.9%	-100.0%	80.0%	-100.0%	66.7%	119.0%	-8.3%

Source: Decennial Census 2010, 2000, American Community Survey 2008-2012

Prepared for the Pennsylvania State Library by The Pennsylvania State Data Center, 9/2014

# Reference Data

## Sewickley Township Public Library

	Total Population	White, Non- Hispanic	Black, Non- Hispanic	Other, Non- Hispanic	Detail for Other, Non-Hispanic					Hispanic or Latino
					AIAN	Asian	NHOPI	Some Other	Two or More	
								Race	Races	
F. Population by Library-Defined Age Groups, 2010										
0-5	337	316	4	15	0	1	0	2	12	2
6-10	334	317	0	14	0	4	0	2	8	3
11-13	196	194	0	2	0	0	0	0	2	0
14-18	417	404	1	7	0	0	0	0	7	5
19-32	824	803	3	12	0	7	0	1	4	6
33-45	980	960	5	12	0	2	0	0	10	3
46-64	1,836	1,815	7	4	0	2	0	0	2	10
65-84	924	916	1	3	0	2	0	0	1	4
85+	148	147	1	0	0	0	0	0	0	0
Total	5,996	5,872	22	69	0	18	0	5	46	33
G. Population by 5-Year Age Cohorts, 2010										
0-4	276	261	4	10	0	1	0	1	8	1
5-9	328	307	0	18	0	4	0	3	11	3
10-14	346	339	0	4	0	0	0	0	4	3
15-19	385	373	1	7	0	0	0	0	7	4
20-24	303	291	1	7	0	4	0	1	2	4
25-29	287	283	0	3	0	2	0	0	1	1
30-34	306	301	3	2	0	2	0	0	0	0
35-39	313	308	1	3	0	0	0	0	3	1
40-44	450	440	3	6	0	0	0	0	6	1
45-49	527	520	0	2	0	1	0	0	1	5
50-54	521	515	1	3	0	2	0	0	1	2
55-59	472	468	3	0	0	0	0	0	0	1
60-64	410	403	3	1	0	0	0	0	1	3
65-69	323	319	1	2	0	1	0	0	1	1
70-74	248	247	0	0	0	0	0	0	0	1
75-79	186	184	0	0	0	0	0	0	0	2
80-84	167	166	0	1	0	1	0	0	0	0
85-89	114	113	1	0	0	0	0	0	0	0
90-94	26	26	0	0	0	0	0	0	0	0
95-99	8	8	0	0	0	0	0	0	0	0
100+	0	0	0	0	0	0	0	0	0	0
Total	5,996	5,872	22	69	0	18	0	5	46	33

Source: Decennial Census 2010, 2000, American Community Survey 2008-2012  
 Prepared for the Pennsylvania State Library by The Pennsylvania State Data Center, 9/2014

# Reference Data

## Sewickley Township Public Library

### H. Income Distribution, 2008-2012

Range (in thousands)	Households	Pct of Total
<\$10K	113	4.6%
\$10K to <\$25K	521	21.2%
\$25K to <\$50K	700	28.5%
\$50K to <\$75K	475	19.3%
\$75K to <\$100K	277	11.3%
\$100K to <\$150K	268	10.9%
\$150K+	103	4.2%

### I. Household Type, 2010

Household Type	2000	2000pct	2010	2010pct
Total Households	2,519	100.0%	2,524	100.0%
Family Households	1,803	71.6%	1,722	68.2%
Husband-wife, no children w/children	545	21.6%	441	17.5%
Female head, no husband, w/ children	117	4.6%	124	4.9%
Male head, no wife, w/ children	46	1.8%	53	2.1%
Without children	1,095	43.5%	1,104	43.7%
Nonfamily households	716	28.4%	802	31.8%
Living alone	638	25.3%	691	27.4%
Other nonfamily	78	3.1%	111	4.4%

### J. Household Type by Race and Ethnicity, 2008-2012

Household Type	White, NH	Black, NH	Other, NH	Hispanic
Total Households	2,491	10	12	11
Husband wife family	53.2%	20.0%	50.0%	36.4%
Family with male head, no wife	4.8%	20.0%	16.7%	18.2%
family with female head, no husband	10.2%	0.0%	16.7%	18.2%
Living alone	27.3%	60.0%	16.7%	27.3%
Other nonfamily	4.5%	0.0%	0.0%	0.0%

### K. Poverty, 2008-2012

Families	Poverty	PA
All families	6.7%	9.1%
Families w/ related children	8.3%	15.3%
Female householder, no husband present	21.4%	28.8%
Female householder, no husband present, w/ related children	31.0%	39.2%
All people	8.9%	13.1%
Under 18 years	12.3%	18.4%
18 to 64 years	9.2%	12.3%
65 years and over	3.7%	8.4%

### L. Educational Attainment by Race and Ethnicity, 2008-2012

Education Level	White, NH	Black	Other	Hispanic	Total
Population 25 years and over	4,055	17	59	29	4,137
Less than high school	10.6%	0.0%	47%	79.3%	11.0%
High school graduate (includes equivalency)	46.7%	52.9%	0%	20.7%	46.1%
Some college or associates degree	26.4%	47.1%	20%	0.0%	26.4%
Bachelors degree or higher	16.4%	0.0%	32%	0.0%	16.5%

### M. Occupation, 2008-2012

Occupation	Estimate	Percent
Civilian population age 16 years and over	2,924	100.0%
Management, professional, and related occupations	709	24.2%
Service occupations	426	14.6%
Sales and office occupations	707	24.2%
Farming, fishing, and forestry occupations	0	0.0%
Construction, extraction, maintenance, and repair occupations	373	12.8%
Production, transportation, and material moving occupations	709	24.2%

### N. Class of Worker, 2008-2012

Occupation	Estimate	Percent
Civilian population age 16 years and over	2,924	100.0%
Private, for profit, wage and salary employee	2,189	74.9%
Private, not for profit, wage and salary employee	243	8.3%
Private, for profit, wage and salary self-employed in own business	62	2.1%
Government workers	160	5.5%
Self-employed in own not incorporated business	270	9.2%
Unpaid family workers in family business	0	0.0%