

Demographic Profile Sinking Spring Public Library

Population Growth: The total population of the Sinking Spring Public Library service area increased by 51.9 percent over the past decade to 4,008; this growth rate was higher than the statewide rate of 3.4 percent.

Age and Sex: In 2010, the Sinking Spring Public Library service area had a total population of 4,008 - 1,923 males (48.0 percent) and 2,085 females (52.0 percent). The age structure of the population in 2010 was as follows: 26.4 percent of the population was under 20 years old, 60.5 percent was 20 to 64 years old and 13.0 percent was 65 years or older.

Race and Ethnicity: For people reporting one race alone, not of Hispanic ethnicity, 80.8 percent were White; 6.1 percent were Black or African American; 4.2 percent were Other Race Alone.¹ A total of 356 or 8.9 percent of the population were Hispanic.²

Households: In 2010, there were 1,664 households in the Sinking Spring Public Library service area. The average household size was 2.40 people. Families made up 63.8 percent of the households. This figure includes both families with (30.9 percent) and without (32.9 percent) children. Of families with children less than 18 years old, 20.1 percent were married-couple families, 8.3 percent were female householder families with no husband present, and the remaining (2.6 percent) were male-headed households with no wife present.

Education: The educational attainment of the population 25 years and over was higher in the Sinking Spring Public Library service area than in Pennsylvania. During the period 2008-2012, 29.0 percent of residents had earned a Bachelor's degree or higher, compared with 27.0 percent statewide. A total of 201 or 7.4 percent had not completed high school, compared with 11.7 percent for the commonwealth as a whole.

Income and Poverty: Households with incomes of \$25,000 to \$49,999 (25.6 percent) made up the largest percent of households in the Sinking Spring Public Library service area in 2008-2012. For comparison, 24.4 percent of commonwealth households were in this range during the period.

In 2008-2012, the overall poverty rate for the Sinking Spring Public Library service area was lower than Pennsylvania (5.6 percent compared to 13.1 percent). The poverty rate for the population under 18 years of age was 5.6 percent, compared with 5.5 percent of people 18 to 64 years and 6.2 percent for those aged 65 years and over. A total of 34 or 3.3 percent of all families had incomes below poverty level. In 2008-2012, 3.9 percent of families with related children and 12.1 percent of families with a female householder and no husband with related children present had incomes below the poverty level.

Class of Worker and Occupation: In 2008-2012, 84.2 percent of the workforce was private wage and salary workers; 13.9 percent were federal, state, or local government workers; and 2.0 percent were self-employed in their own (not incorporated) business.

The top occupation group for the civilian employed population 16 years and over in the Sinking Spring Public Library service area in 2008-2012 was Management, business, science, and arts (39.6 percent).

¹ Other race includes those who identified themselves as American Indian/Alaska Native, Asian, Native Hawaiian/Other Pacific Islander, Some Other Race and Two or More Races on the 2010 Census form.

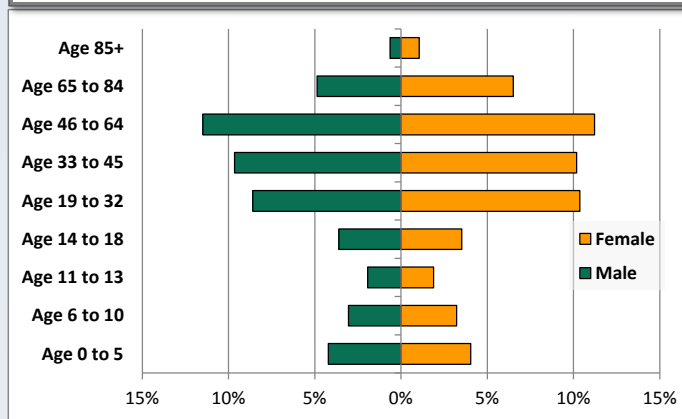
² People of Hispanic origin may be of any race.

Demographic Profile

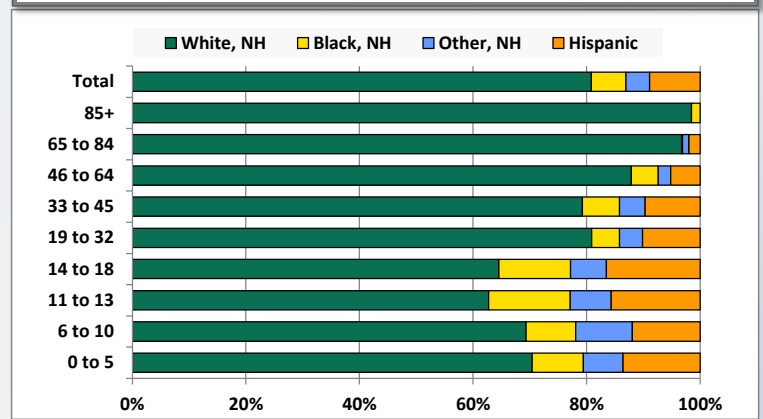
Sinking Spring Public Library

Key Indicators		
	2000	2010
Population Growth		
Total Population	2,639	4,008
10-Year Growth	N/A	51.9%
Diversity		
White Alone, Non-Hispanic	94.3%	80.8%
Black Alone, Non-Hispanic	1.1%	6.1%
Other Race Alone, Non-Hispanic	1.9%	4.2%
Percent Hispanic	2.7%	8.9%
Aging		
Percent 65 Years and Over	22.5%	13.0%
Households		
Percent Married Couple with Own Children	15.7%	20.1%
Percent Living Alone	33.0%	27.6%

Population by Library-Defined Age Group, 2010



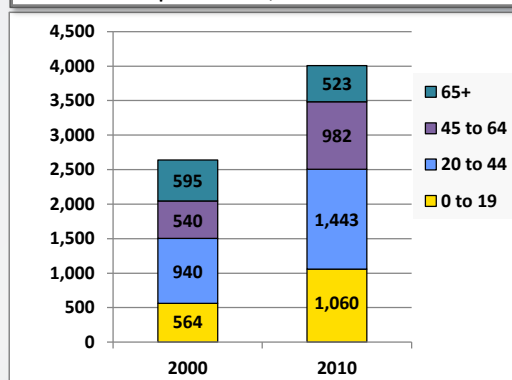
Race/Ethnicity by Library-Defined Age Group, 2010



Population Growth by Library-Defined Age Group, 2000 to 2010

Age Group	2010	Change	
		Numeric	Percent
Total	4,008	1,369	51.9%
85+	67	6	9.8%
65 to 84	456	-78	-14.6%
46 to 64	910	405	80.2%
33 to 45	795	272	52.0%
19 to 32	760	286	60.3%
14 to 18	285	151	112.7%
11 to 13	153	65	73.9%
6 to 10	251	85	51.2%
0 to 5	331	177	114.9%

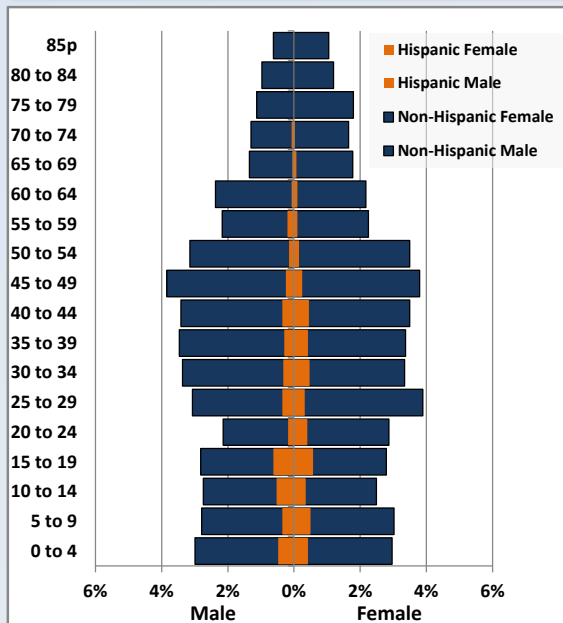
Population Total, 2000 and 2010



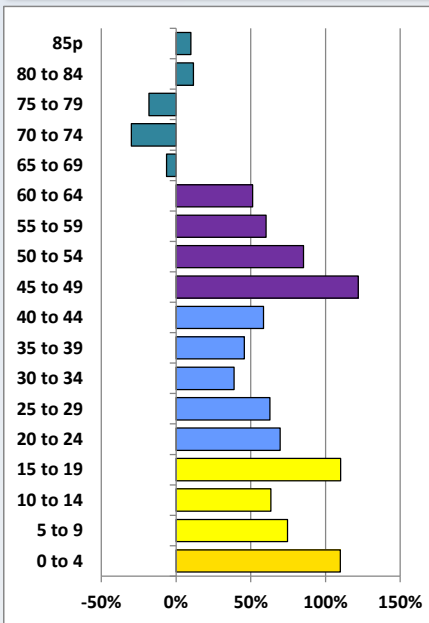
Demographic Profile

Sinking Spring Public Library

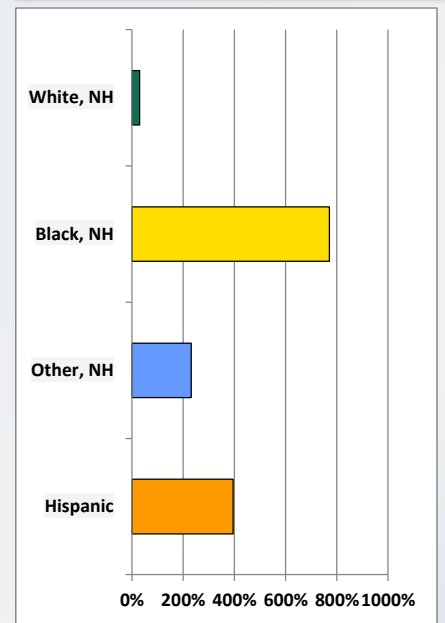
Population by 5-Year Age Cohorts



Pop Change by Age, 2000 to 2010

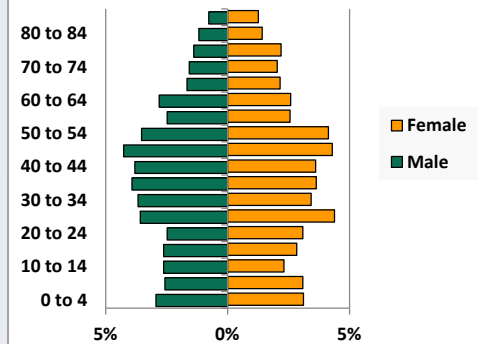


Pop Change by Race/Ethnicity, 2000 to 2010

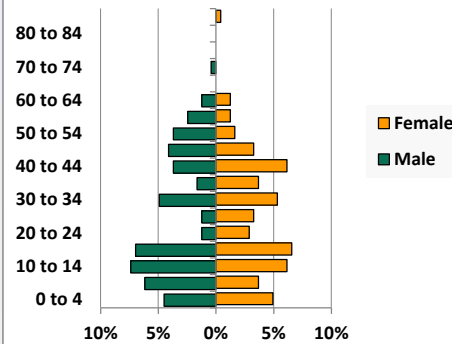


Population by Age, Race and Ethnicity 2010

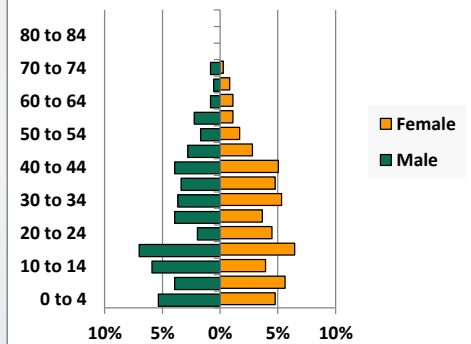
White, Not Hispanic



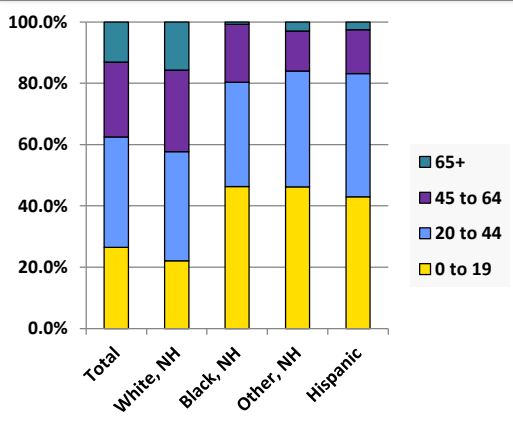
Black, Non-Hispanic



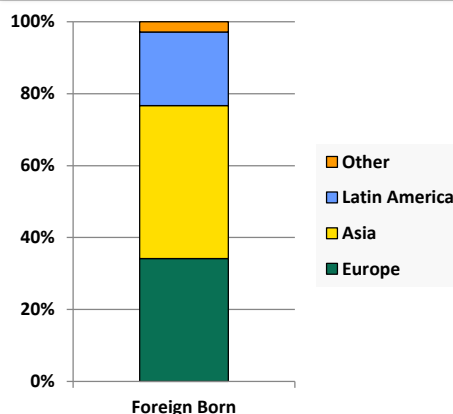
Hispanic



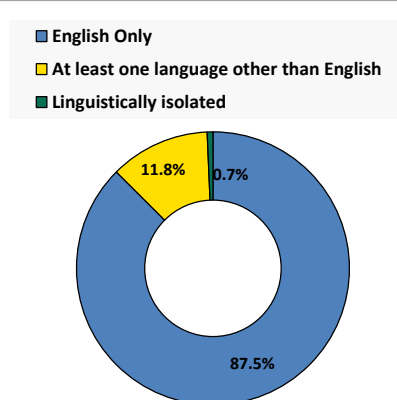
Age by Race and Ethnicity, 2010



Foreign Born, 2010



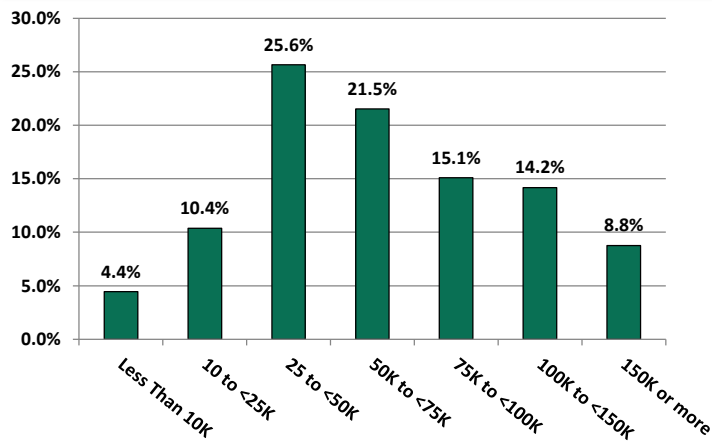
Household Language, 2010



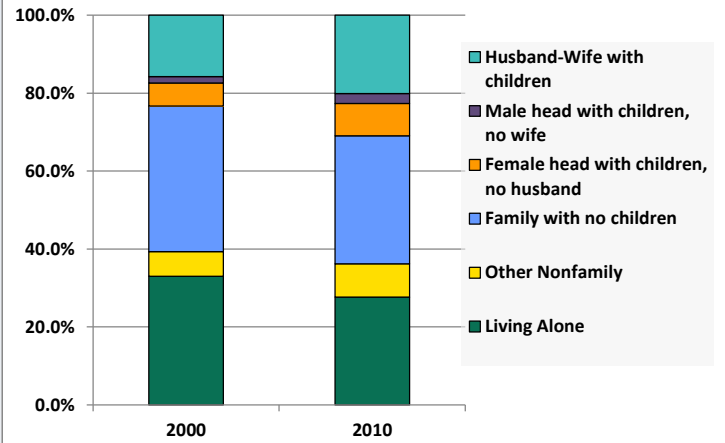
Demographic Profile

Sinking Spring Public Library

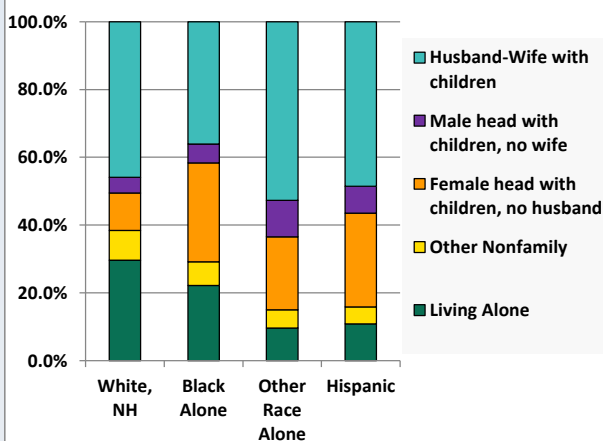
Household Income Distribution, 2008-2012



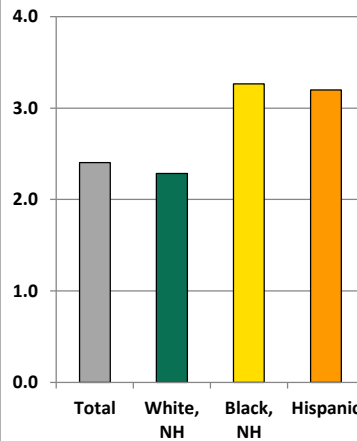
Household Type, 2000 and 2010



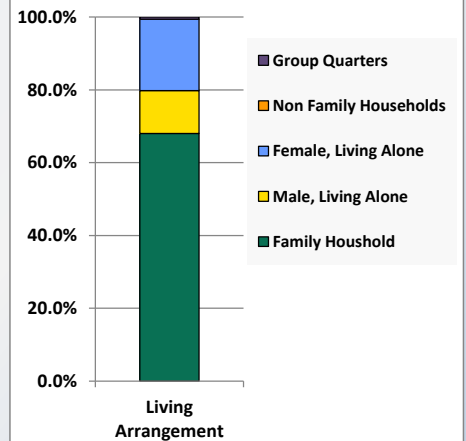
Household Type by Race/Ethnicity, 2010



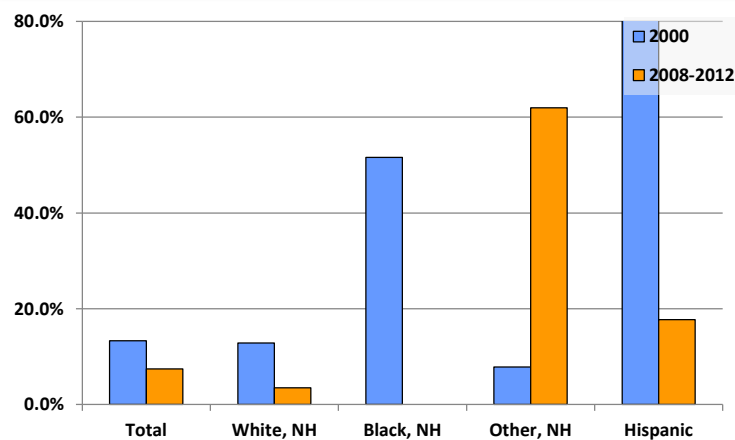
Average Household Size, 2010



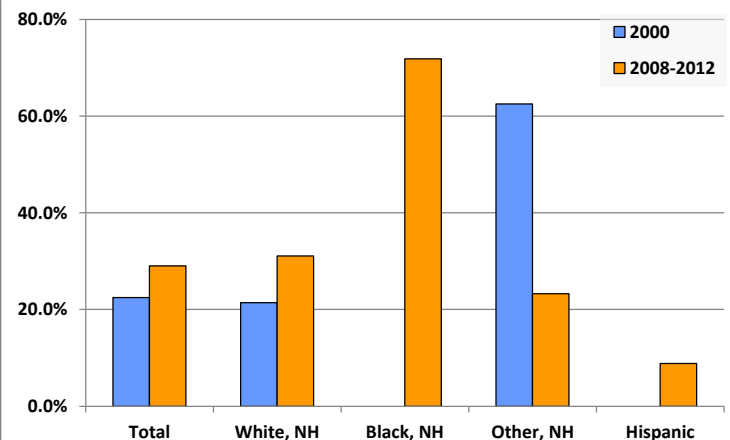
Living Arrangements 65+, 2008-2012



Percent of Adults that Did Not Complete High School



Percent of Adults Who Attained a Bachelor's Degree or Higher



Reference Data

Sinking Spring Public Library

					Detail for Other, Non-Hispanic					Hispanic or Latino
	Total Population	White, Non-Hispanic	Black, Non-Hispanic	Other, Non-Hispanic	AIAN	Asian	NHOPI	Some Other	Two or More	
								Race	Races	
A. Total Population										
2000 Total	2,639	2,488	28	51	4	21	0	0	26	72
2000 pct of Total	100.0%	94.3%	1.1%	1.9%	0.2%	0.8%	0.0%	0.0%	1.0%	2.7%
2010 Total	4,008	3,239	244	169	1	98	0	1	69	356
2010 pct of Total	100.0%	80.8%	6.1%	4.2%	0.0%	2.4%	0.0%	0.0%	1.7%	8.9%
B. Population by Major Age Groups by Race and Ethnicity										
2000										
0-19	564	501	11	17	0	5	0	0	12	35
20-64	1,480	1,394	17	32	4	16	0	0	12	37
65+	595	593	0	2	0	0	0	0	2	0
85+	61	61	0	0	0	0	0	0	0	0
2010										
0-19	1,060	716	113	78	0	34	0	1	43	153
20-64	2,425	2,016	129	86	1	59	0	0	26	194
65+	523	507	2	5	0	5	0	0	0	9
85+	67	66	1	0	0	0	0	0	0	0
C. Age Mix for Each Racial and Ethnic Group										
2000										
0-19	21.4%	20.1%	39.3%	33.3%	0.0%	23.8%	0.0%	0.0%	46.2%	48.6%
20-64	56.1%	56.0%	60.7%	62.7%	100.0%	76.2%	0.0%	0.0%	46.2%	51.4%
65+	22.5%	23.8%	0.0%	3.9%	0.0%	0.0%	0.0%	0.0%	7.7%	0.0%
85+	2.3%	2.5%	0.0%	0.0%	0.0%	0.0%	0.0%	0.0%	0.0%	0.0%
2010										
0-19	26.4%	22.1%	46.3%	46.2%	0.0%	34.7%	0.0%	100.0%	62.3%	43.0%
20-64	60.5%	62.2%	52.9%	50.9%	100.0%	60.2%	0.0%	0.0%	37.7%	54.5%
65+	13.0%	15.7%	0.8%	3.0%	0.0%	5.1%	0.0%	0.0%	0.0%	2.5%
85+	1.7%	2.0%	0.4%	0.0%	0.0%	0.0%	0.0%	0.0%	0.0%	0.0%
D. Racial and Ethnic Composition of Each Age Group										
2000										
0-19	100.0%	88.8%	2.0%	3.0%	0.0%	0.9%	0.0%	0.0%	2.1%	6.2%
20-64	100.0%	94.2%	1.1%	2.2%	0.3%	1.1%	0.0%	0.0%	0.8%	2.5%
65+	100.0%	99.7%	0.0%	0.3%	0.0%	0.0%	0.0%	0.0%	0.3%	0.0%
85+	100.0%	100.0%	0.0%	0.0%	0.0%	0.0%	0.0%	0.0%	0.0%	0.0%
2010										
0-19	100.0%	67.5%	10.7%	7.4%	0.0%	3.2%	0.0%	0.1%	4.1%	14.4%
20-64	100.0%	83.1%	5.3%	3.5%	0.0%	2.4%	0.0%	0.0%	1.1%	8.0%
65+	100.0%	96.9%	0.4%	1.0%	0.0%	1.0%	0.0%	0.0%	0.0%	1.7%
85+	100.0%	98.5%	1.5%	0.0%	0.0%	0.0%	0.0%	0.0%	0.0%	0.0%
E. Population Growth										
2000-2010, Change										
0-19	496	215	102	61	0	29	0	1	31	118
20-64	945	622	112	54	-3	43	0	0	14	157
65+	-72	-86	2	3	0	5	0	0	-2	9
85+	6	5	1	0	0	0	0	0	0	0
Total	1,369	751	216	118	-3	77	0	1	43	284
2000-2010, Pct Change										
0-19	87.9%	42.9%	927.3%	358.8%	0.0%	580.0%	0.0%	0.0%	258.3%	337.1%
20-64	63.9%	44.6%	658.8%	168.8%	-75.0%	268.8%	0.0%	0.0%	116.7%	424.3%
65+	-12.1%	-14.5%	0.0%	150.0%	0.0%	0.0%	0.0%	0.0%	-100.0%	0.0%
85+	9.8%	8.2%	0.0%	0.0%	0.0%	0.0%	0.0%	0.0%	0.0%	0.0%
Total	51.9%	30.2%	771.4%	231.4%	-75.0%	366.7%	0.0%	0.0%	165.4%	394.4%

Source: Decennial Census 2010, 2000, American Community Survey 2008-2012

Prepared for the Pennsylvania State Library by The Pennsylvania State Data Center, 9/2014

Reference Data

Sinking Spring Public Library

	Total Population	White, Non- Hispanic	Black, Non- Hispanic	Other, Non- Hispanic	Detail for Other, Non-Hispanic					Hispanic or Latino
					AIAN	Asian	NHOPI	Some Other	Two or More	
								Race	Races	
F. Population by Library-Defined Age Groups, 2010										
0-5	331	233	30	23	0	9	0	0	14	45
6-10	251	174	22	25	0	10	0	1	14	30
11-13	153	96	22	11	0	3	0	0	8	24
14-18	285	184	36	18	0	11	0	0	7	47
19-32	760	615	37	31	1	21	0	0	9	77
33-45	795	630	52	36	0	23	0	0	13	77
46-64	910	800	43	20	0	16	0	0	4	47
65-84	456	441	1	5	0	5	0	0	0	9
85+	67	66	1	0	0	0	0	0	0	0
Total	4,008	3,239	244	169	1	98	0	1	69	356
G. Population by 5-Year Age Cohorts, 2010										
0-4	275	196	23	20	0	9	0	0	11	36
5-9	267	183	24	26	0	10	0	1	15	34
10-14	245	160	33	17	0	6	0	0	11	35
15-19	273	177	33	15	0	9	0	0	6	48
20-24	224	180	10	11	1	8	0	0	2	23
25-29	306	258	11	10	0	6	0	0	4	27
30-34	301	230	25	14	0	9	0	0	5	32
35-39	303	245	13	16	0	10	0	0	6	29
40-44	309	240	24	13	0	8	0	0	5	32
45-49	326	277	18	11	0	9	0	0	2	20
50-54	278	248	13	5	0	4	0	0	1	12
55-59	189	163	9	5	0	4	0	0	1	12
60-64	189	175	6	1	0	1	0	0	0	7
65-69	130	124	0	1	0	1	0	0	0	5
70-74	122	117	1	0	0	0	0	0	0	4
75-79	117	116	0	1	0	1	0	0	0	0
80-84	87	84	0	3	0	3	0	0	0	0
85-89	46	46	0	0	0	0	0	0	0	0
90-94	19	18	1	0	0	0	0	0	0	0
95-99	2	2	0	0	0	0	0	0	0	0
100+	0	0	0	0	0	0	0	0	0	0
Total	4,008	3,239	244	169	1	98	0	1	69	356

Source: Decennial Census 2010, 2000, American Community Survey 2008-2012

Prepared for the Pennsylvania State Library by The Pennsylvania State Data Center, 9/2014

Page 6

Reference Data

Sinking Spring Public Library

H. Income Distribution, 2008-2012

Range (in thousands)	Households	Pct of Total
<\$10K	72	4.4%
\$10K to <\$25K	168	10.4%
\$25K to <\$50K	416	25.6%
\$50K to <\$75K	349	21.5%
\$75K to <\$100K	245	15.1%
\$100K to <\$150K	230	14.2%
\$150K+	142	8.8%

I. Household Type, 2010

Household Type	2000	2000pct	2010	2010pct
Total Households	1,233	100.0%	1,664	100.0%
Family Households	748	60.7%	1,062	63.8%
Husband-wife, no children w/children	194	15.7%	334	20.1%
Female head, no husband, w/ children	72	5.8%	138	8.3%
Male head, no wife, w/ children	21	1.7%	43	2.6%
Without children	461	37.4%	547	32.9%
Nonfamily households	485	39.3%	602	36.2%
Living alone	407	33.0%	460	27.6%
Other nonfamily	78	6.3%	142	8.5%

J. Household Type by Race and Ethnicity, 2008-2012

Household Type	White, NH	Black, NH	Other, NH	Hispanic
Total Households	1,451	72	93	101
Husband wife family	45.9%	36.1%	52.7%	48.5%
Family with male head, no wife	4.6%	5.6%	10.8%	7.9%
family with female head, no husband	11.0%	29.2%	21.5%	27.7%
Living alone	29.6%	22.2%	9.7%	10.9%
Other nonfamily	8.8%	6.9%	5.4%	5.0%

K. Poverty, 2008-2012

Families	Poverty	PA
All families	3.3%	9.1%
Families w/ related children	3.9%	15.3%
Female householder, no husband present	11.7%	28.8%
Female householder, no husband present, w/ related children	12.1%	39.2%
All people	5.6%	13.1%
Under 18 years	5.6%	18.4%
18 to 64 years	5.5%	12.3%
65 years and over	6.2%	8.4%

L. Educational Attainment by Race and Ethnicity, 2008-2012

Education Level	White, NH	Black	Other	Hispanic	Total
Population 25 years and over	2,269	32	176	271	2,704
Less than high school	3.5%	0.0%	62%	17.7%	7.4%
High school graduate (includes equivalency)	36.4%	3.1%	0%	22.1%	32.8%
Some college or associates degree	29.0%	25.0%	15%	51.3%	30.8%
Bachelors degree or higher	31.1%	71.9%	23%	8.9%	29.0%

M. Occupation, 2008-2012

Occupation	Estimate	Percent
Civilian population age 16 years and over	2,071	100.0%
Management, professional, and related occupations	821	39.6%
Service occupations	369	17.8%
Sales and office occupations	493	23.8%
Farming, fishing, and forestry occupations	0	0.0%
Construction, extraction, maintenance, and repair occupations	193	9.3%
Production, transportation, and material moving occupations	195	9.4%

N. Class of Worker, 2008-2012

Occupation	Estimate	Percent
Civilian population age 16 years and over	2,071	100.0%
Private, for profit, wage and salary employee	1,503	72.6%
Private, not for profit, wage and salary employee	134	6.5%
Private, for profit, wage and salary self-employed in own business	106	5.1%
Government workers	287	13.9%
Self-employed in own not incorporated business	41	2.0%
Unpaid family workers in family business	0	0.0%