

Demographic Profile South Fork Public Library

Population Growth: The total population of the South Fork Public Library service area decreased by -18.5 percent over the past decade to 928; this decline rate was lower than the statewide rate of 3.4 percent.

Age and Sex: In 2010, the South Fork Public Library service area had a total population of 928 - 454 males (48.9 percent) and 474 females (51.1 percent). The age structure of the population in 2010 was as follows: 26.0 percent of the population was under 20 years old, 57.4 percent was 20 to 64 years old and 16.6 percent was 65 years or older.

Race and Ethnicity: For people reporting one race alone, not of Hispanic ethnicity, 98.0 percent were White; .5 percent were Black or African American; 1.3 percent were Other Race Alone.¹ A total of 2 or .2 percent of the population were Hispanic.²

Households: In 2010, there were 417 households in the South Fork Public Library service area. The average household size was 2.23 people. Families made up 60.2 percent of the households. This figure includes both families with (27.8 percent) and without (32.4 percent) children. Of families with children less than 18 years old, 16.5 percent were married-couple families, 7.9 percent were female householder families with no husband present, and the remaining (3.4 percent) were male-headed households with no wife present.

Education: The educational attainment of the population 25 years and over was lower in the South Fork Public Library service area than in Pennsylvania. During the period 2008-2012, 11.0 percent of residents had earned a Bachelor's degree or higher, compared with 27.0 percent statewide. A total of 58 or 9.8 percent had not completed high school, compared with 11.7 percent for the commonwealth as a whole.

Income and Poverty: Households with incomes of \$25,000 to \$49,999 (29.4 percent) made up the largest percent of households in the South Fork Public Library service area in 2008-2012. For comparison, 24.4 percent of commonwealth households were in this range during the period.

In 2008-2012, the overall poverty rate for the South Fork Public Library service area was lower than Pennsylvania (7.5 percent compared to 13.1 percent). The poverty rate for the population under 18 years of age was 10.1 percent, compared with 7.3 percent of people 18 to 64 years and 3.4 percent for those aged 65 years and over. A total of 13 or 5.4 percent of all families had incomes below poverty level. In 2008-2012, 9.8 percent of families with related children and .0 percent of families with a female householder and no husband with related children present had incomes below the poverty level.

Class of Worker and Occupation: In 2008-2012, 79.6 percent of the workforce was private wage and salary workers; 15.2 percent were federal, state, or local government workers; and 5.1 percent were self-employed in their own (not incorporated) business.

The top occupation group for the civilian employed population 16 years and over in the South Fork Public Library service area in 2008-2012 was Sales and office (27.5 percent).

¹ Other race includes those who identified themselves as American Indian/Alaska Native, Asian, Native Hawaiian/Other Pacific Islander, Some Other Race and Two or More Races on the 2010 Census form.

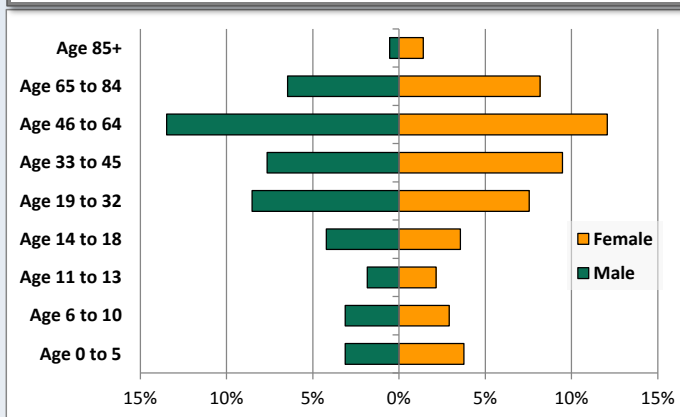
² People of Hispanic origin may be of any race.

Demographic Profile

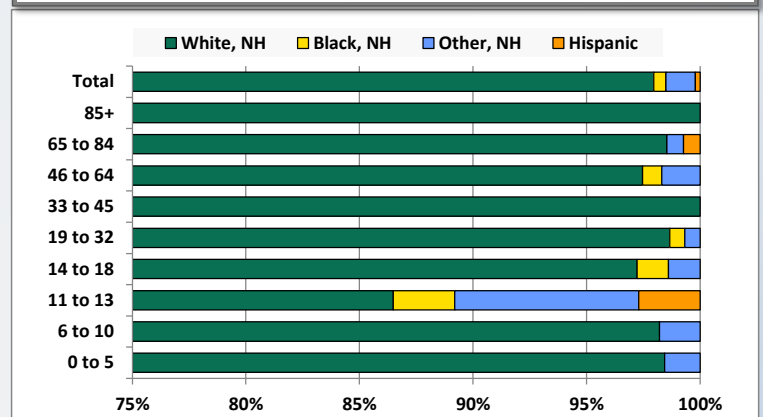
South Fork Public Library

Key Indicators		
	2000	2010
Population Growth		
Total Population	1,138	928
10-Year Growth	N/A	-18.5%
Diversity		
White Alone, Non-Hispanic	99.1%	98.0%
Black Alone, Non-Hispanic	0.1%	0.5%
Other Race Alone, Non-Hispanic	0.2%	1.3%
Percent Hispanic	0.6%	0.2%
Aging		
Percent 65 Years and Over	18.5%	16.6%
Households		
Percent Married Couple with Own Children	23.2%	16.5%
Percent Living Alone	29.0%	37.6%

Population by Library-Defined Age Group, 2010



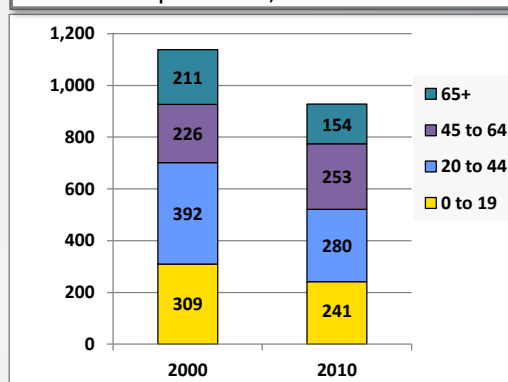
Race/Ethnicity by Library-Defined Age Group, 2010



Population Growth by Library-Defined Age Group, 2000 to 2010

Age Group	2010	Change	
		Numeric	Percent
Total	928	-210	-18.5%
85+	18	-3	-14.3%
65 to 84	136	-54	-28.4%
46 to 64	237	21	9.7%
33 to 45	159	-48	-23.2%
19 to 32	149	-58	-28.0%
14 to 18	72	1	1.4%
11 to 13	37	-15	-28.8%
6 to 10	56	-36	-39.1%
0 to 5	64	-18	-22.0%

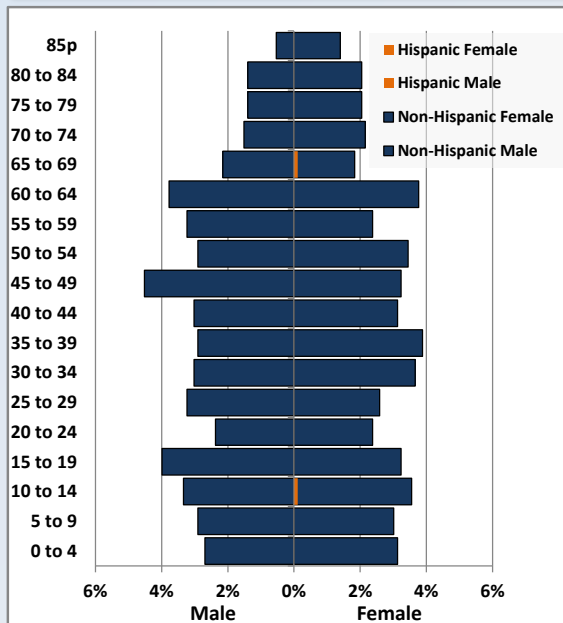
Population Total, 2000 and 2010



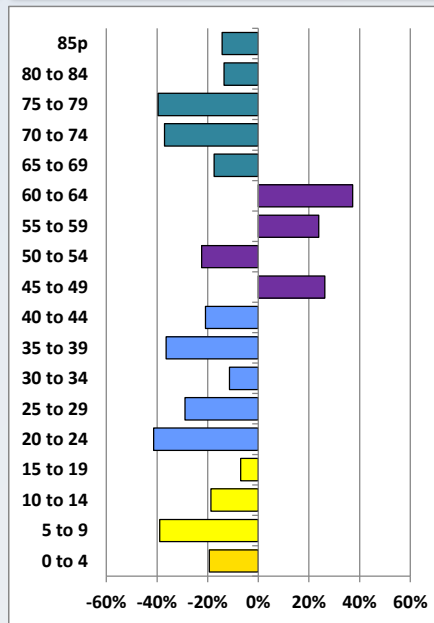
Demographic Profile

South Fork Public Library

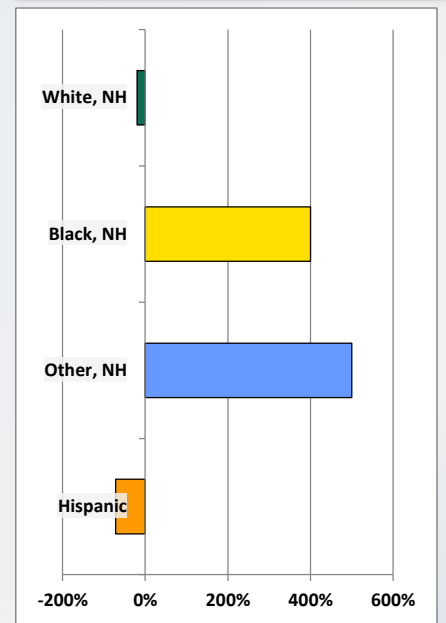
Population by 5-Year Age Cohorts



Pop Change by Age, 2000 to 2010

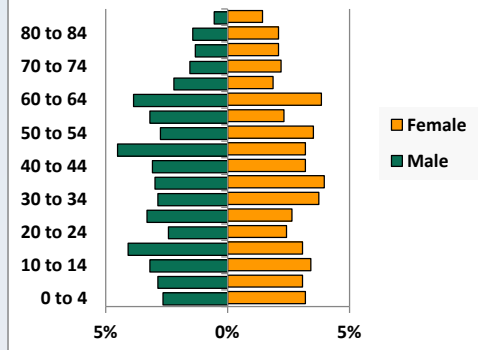


Pop Change by Race/Ethnicity, 2000 to 2010

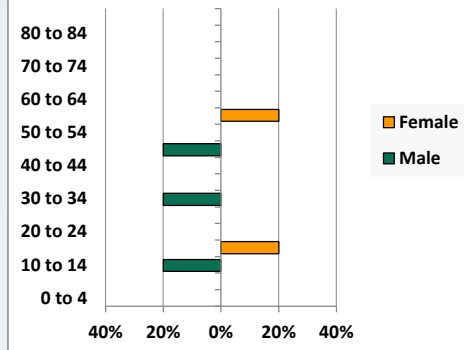


Population by Age, Race and Ethnicity 2010

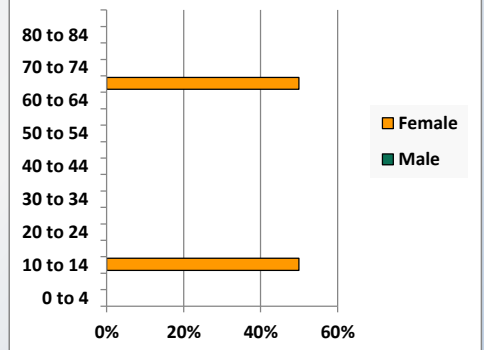
White, Not Hispanic



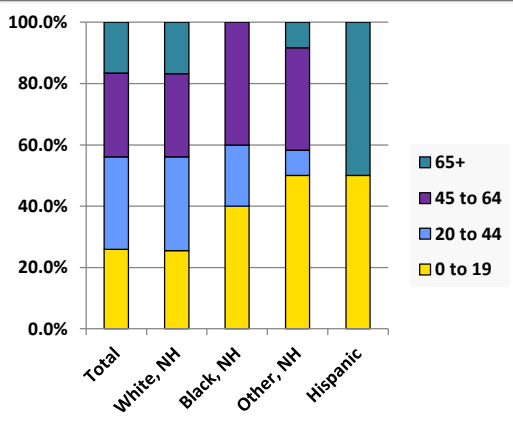
Black, Non-Hispanic



Hispanic



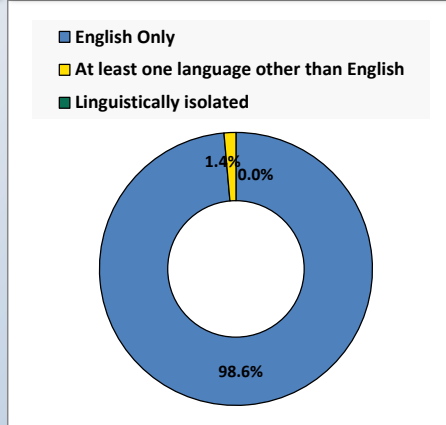
Age by Race and Ethnicity, 2010



Foreign Born, 2010



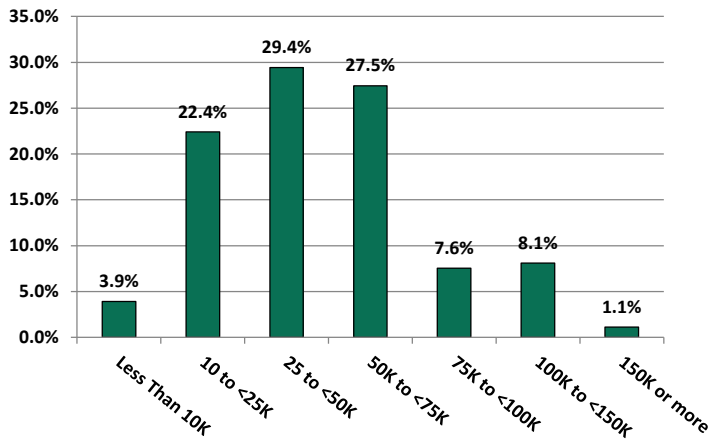
Household Language, 2010



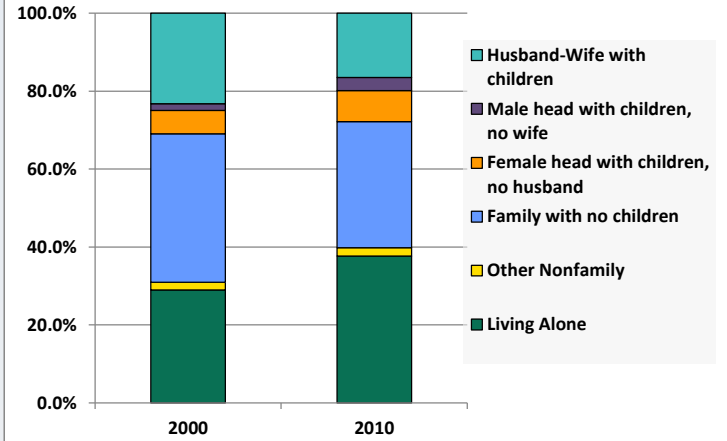
Demographic Profile

South Fork Public Library

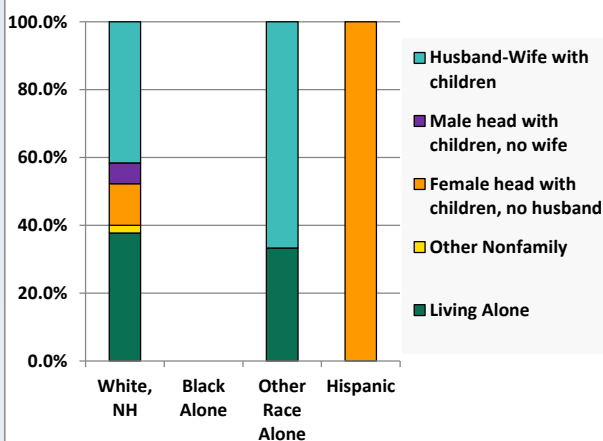
Household Income Distribution, 2008-2012



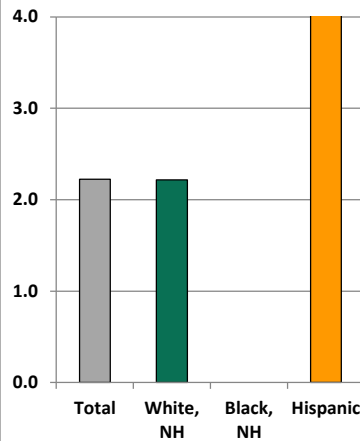
Household Type, 2000 and 2010



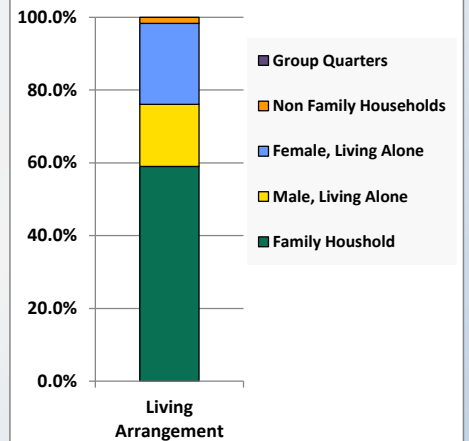
Household Type by Race/Ethnicity, 2010



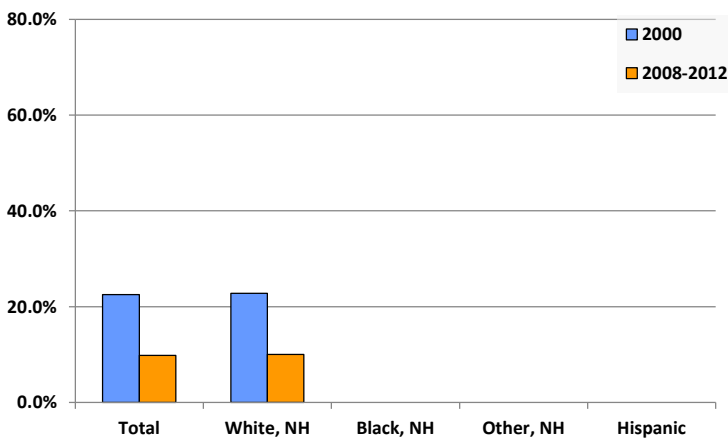
Average Household Size, 2010



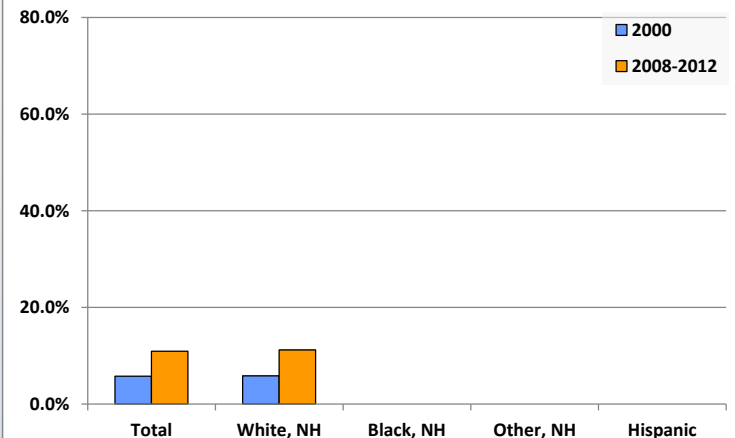
Living Arrangements 65+, 2008-2012



Percent of Adults that Did Not Complete High School



Percent of Adults Who Attained a Bachelor's Degree or Higher



Reference Data

South Fork Public Library

	Total Population	White, Non- Hispanic	Black, Non- Hispanic	Other, Non- Hispanic	Detail for Other, Non-Hispanic					Hispanic or Latino
					AIAN	Asian	NHOPI	Some Other Race	Two or More Races	
A. Total Population										
2000 Total	1,138	1,128	1	2	0	0	0	0	2	7
2000 pct of Total	100.0%	99.1%	0.1%	0.2%	0.0%	0.0%	0.0%	0.0%	0.2%	0.6%
2010 Total	928	909	5	12	0	0	0	1	11	2
2010 pct of Total	100.0%	98.0%	0.5%	1.3%	0.0%	0.0%	0.0%	0.1%	1.2%	0.2%
B. Population by Major Age Groups by Race and Ethnicity										
2000										
0-19	309	307	0	1	0	0	0	0	1	1
20-64	618	611	1	0	0	0	0	0	0	6
65+	211	210	0	1	0	0	0	0	1	0
85+	21	21	0	0	0	0	0	0	0	0
2010										
0-19	241	232	2	6	0	0	0	1	5	1
20-64	533	525	3	5	0	0	0	0	5	0
65+	154	152	0	1	0	0	0	0	1	1
85+	18	18	0	0	0	0	0	0	0	0
C. Age Mix for Each Racial and Ethnic Group										
2000										
0-19	27.2%	27.2%	0.0%	50.0%	0.0%	0.0%	0.0%	0.0%	50.0%	14.3%
20-64	54.3%	54.2%	100.0%	0.0%	0.0%	0.0%	0.0%	0.0%	0.0%	85.7%
65+	18.5%	18.6%	0.0%	50.0%	0.0%	0.0%	0.0%	0.0%	50.0%	0.0%
85+	1.8%	1.9%	0.0%	0.0%	0.0%	0.0%	0.0%	0.0%	0.0%	0.0%
2010										
0-19	26.0%	25.5%	40.0%	50.0%	0.0%	0.0%	0.0%	100.0%	45.5%	50.0%
20-64	57.4%	57.8%	60.0%	41.7%	0.0%	0.0%	0.0%	0.0%	45.5%	0.0%
65+	16.6%	16.7%	0.0%	8.3%	0.0%	0.0%	0.0%	0.0%	9.1%	50.0%
85+	1.9%	2.0%	0.0%	0.0%	0.0%	0.0%	0.0%	0.0%	0.0%	0.0%
D. Racial and Ethnic Composition of Each Age Group										
2000										
0-19	100.0%	99.4%	0.0%	0.3%	0.0%	0.0%	0.0%	0.0%	0.3%	0.3%
20-64	100.0%	98.9%	0.2%	0.0%	0.0%	0.0%	0.0%	0.0%	0.0%	1.0%
65+	100.0%	99.5%	0.0%	0.5%	0.0%	0.0%	0.0%	0.0%	0.5%	0.0%
85+	100.0%	100.0%	0.0%	0.0%	0.0%	0.0%	0.0%	0.0%	0.0%	0.0%
2010										
0-19	100.0%	96.3%	0.8%	2.5%	0.0%	0.0%	0.0%	0.4%	2.1%	0.4%
20-64	100.0%	98.5%	0.6%	0.9%	0.0%	0.0%	0.0%	0.0%	0.9%	0.0%
65+	100.0%	98.7%	0.0%	0.6%	0.0%	0.0%	0.0%	0.0%	0.6%	0.6%
85+	100.0%	100.0%	0.0%	0.0%	0.0%	0.0%	0.0%	0.0%	0.0%	0.0%
E. Population Growth										
2000-2010, Change										
0-19	-68	-75	2	5	0	0	0	1	4	0
20-64	-85	-86	2	5	0	0	0	0	5	-6
65+	-57	-58	0	0	0	0	0	0	0	1
85+	-3	-3	0	0	0	0	0	0	0	0
Total	-210	-219	4	10	0	0	0	1	9	-5
2000-2010, Pct Change										
0-19	-22.0%	-24.4%	0.0%	500.0%	0.0%	0.0%	0.0%	0.0%	400.0%	0.0%
20-64	-13.8%	-14.1%	200.0%	0.0%	0.0%	0.0%	0.0%	0.0%	0.0%	-100.0%
65+	-27.0%	-27.6%	0.0%	0.0%	0.0%	0.0%	0.0%	0.0%	0.0%	0.0%
85+	-14.3%	-14.3%	0.0%	0.0%	0.0%	0.0%	0.0%	0.0%	0.0%	0.0%
Total	-18.5%	-19.4%	400.0%	500.0%	0.0%	0.0%	0.0%	0.0%	450.0%	-71.4%

Reference Data

South Fork Public Library

	Total Population	White, Non- Hispanic	Black, Non- Hispanic	Other, Non- Hispanic	Detail for Other, Non-Hispanic					Hispanic or Latino
					AIAN	Asian	NHOPI	Some Other	Two or More	
								Race	Races	
F. Population by Library-Defined Age Groups, 2010										
0-5	64	63	0	1	0	0	0	0	1	0
6-10	56	55	0	1	0	0	0	1	0	0
11-13	37	32	1	3	0	0	0	0	3	1
14-18	72	70	1	1	0	0	0	0	1	0
19-32	149	147	1	1	0	0	0	0	1	0
33-45	159	159	0	0	0	0	0	0	0	0
46-64	237	231	2	4	0	0	0	0	4	0
65-84	136	134	0	1	0	0	0	0	1	1
85+	18	18	0	0	0	0	0	0	0	0
Total	928	909	5	12	0	0	0	1	11	2
G. Population by 5-Year Age Cohorts, 2010										
0-4	54	53	0	1	0	0	0	0	1	0
5-9	55	54	0	1	0	0	0	1	0	0
10-14	65	60	1	3	0	0	0	0	3	1
15-19	67	65	1	1	0	0	0	0	1	0
20-24	44	44	0	0	0	0	0	0	0	0
25-29	54	54	0	0	0	0	0	0	0	0
30-34	62	60	1	1	0	0	0	0	1	0
35-39	63	63	0	0	0	0	0	0	0	0
40-44	57	57	0	0	0	0	0	0	0	0
45-49	72	70	1	1	0	0	0	0	1	0
50-54	59	57	0	2	0	0	0	0	2	0
55-59	52	50	1	1	0	0	0	0	1	0
60-64	70	70	0	0	0	0	0	0	0	0
65-69	38	37	0	0	0	0	0	0	0	1
70-74	34	34	0	0	0	0	0	0	0	0
75-79	32	31	0	1	0	0	0	0	1	0
80-84	32	32	0	0	0	0	0	0	0	0
85-89	11	11	0	0	0	0	0	0	0	0
90-94	6	6	0	0	0	0	0	0	0	0
95-99	1	1	0	0	0	0	0	0	0	0
100+	0	0	0	0	0	0	0	0	0	0
Total	928	909	5	12	0	0	0	1	11	2

Reference Data

South Fork Public Library

H. Income Distribution, 2008-2012

Range (in thousands)	Households	Pct of Total
<\$10K	14	3.9%
\$10K to <\$25K	80	22.4%
\$25K to <\$50K	105	29.4%
\$50K to <\$75K	98	27.5%
\$75K to <\$100K	27	7.6%
\$100K to <\$150K	29	8.1%
\$150K+	4	1.1%

I. Household Type, 2010

Household Type	2000	2000pct	2010	2010pct
Total Households	452	100.0%	417	100.0%
Family Households	312	69.0%	251	60.2%
Husband-wife, no children w/children	105	23.2%	69	16.5%
Female head, no husband, w/ children	27	6.0%	33	7.9%
Male head, no wife, w/ children	8	1.8%	14	3.4%
Without children	172	38.1%	135	32.4%
Nonfamily households	140	31.0%	166	39.8%
Living alone	131	29.0%	157	37.6%
Other nonfamily	9	2.0%	9	2.2%

J. Household Type by Race and Ethnicity, 2008-2012

Household Type	White, NH	Black, NH	Other, NH	Hispanic
Total Households	413	0	3	1
Husband wife family	41.6%	0.0%	66.7%	0.0%
Family with male head, no wife	6.1%	0.0%	0.0%	0.0%
family with female head, no husband	12.3%	0.0%	0.0%	100.0%
Living alone	37.8%	0.0%	33.3%	0.0%
Other nonfamily	2.2%	0.0%	0.0%	0.0%

K. Poverty, 2008-2012

Families	Poverty	PA
All families	5.4%	9.1%
Families w/ related children	9.8%	15.3%
Female householder, no husband present	0.0%	28.8%
Female householder, no husband present, w/ related children	0.0%	39.2%
All people	7.5%	13.1%
Under 18 years	10.1%	18.4%
18 to 64 years	7.3%	12.3%
65 years and over	3.4%	8.4%

L. Educational Attainment by Race and Ethnicity, 2008-2012

Education Level	White, NH	Black	Other	Hispanic	Total
Population 25 years and over	578	2	1	11	592
Less than high school	10.0%	0.0%	0%	0.0%	9.8%
High school graduate (includes equivalency	60.0%	100.0%	0%	0.0%	59.0%
Some college or associates degree	18.7%	0.0%	100%	100.0%	20.3%
Bachelors degree or higher	11.2%	0.0%	0%	0.0%	11.0%

M. Occupation, 2008-2012

Occupation	Estimate	Percent
Civilian population age 16 years and over	447	100.0%
Management, professional, and related occupations	93	20.8%
Service occupations	109	24.4%
Sales and office occupations	123	27.5%
Farming, fishing, and forestry occupations	0	0.0%
Construction, extraction, maintenance, and repair occupations	38	8.5%
Production, transportation, and material moving occupations	84	18.8%

N. Class of Worker, 2008-2012

Occupation	Estimate	Percent
Civilian population age 16 years and over	447	100.0%
Private, for profit, wage and salary employee	329	73.6%
Private, not for profit, wage and salary employee	27	6.0%
Private, for profit, wage and salary self-employed in own business	0	0.0%
Government workers	68	15.2%
Self-employed in own not incorporated business	23	5.1%
Unpaid family workers in family business	0	0.0%