

## Demographic Profile Springboro Public Library

**Population Growth:** The total population of the Springboro Public Library service area decreased by -1.3 percent over the past decade to 2,927; this decline rate was lower than the statewide rate of 3.4 percent.

**Age and Sex:** In 2010, the Springboro Public Library service area had a total population of 2,927 - 1,476 males (50.4 percent) and 1,451 females (49.6 percent). The age structure of the population in 2010 was as follows: 27.9 percent of the population was under 20 years old, 58.7 percent was 20 to 64 years old and 13.5 percent was 65 years or older.

**Race and Ethnicity:** For people reporting one race alone, not of Hispanic ethnicity, 97.4 percent were White; .6 percent were Black or African American; 1.4 percent were Other Race Alone.<sup>1</sup> A total of 18 or .6 percent of the population were Hispanic.<sup>2</sup>

**Households:** In 2010, there were 1,102 households in the Springboro Public Library service area. The average household size was 2.66 people. Families made up 72.5 percent of the households. This figure includes both families with (29.2 percent) and without (43.3 percent) children. Of families with children less than 18 years old, 19.5 percent were married-couple families, 5.0 percent were female householder families with no husband present, and the remaining (4.7 percent) were male-headed households with no wife present.

**Education:** The educational attainment of the population 25 years and over was lower in the Springboro Public Library service area than in Pennsylvania. During the period 2008-2012, 11.0 percent of residents had earned a Bachelor's degree or higher, compared with 27.0 percent statewide. A total of 330 or 17.5 percent had not completed high school, compared with 11.7 percent for the commonwealth as a whole.

**Income and Poverty:** Households with incomes of \$25,000 to \$49,999 (31.7 percent) made up the largest percent of households in the Springboro Public Library service area in 2008-2012. For comparison, 24.4 percent of commonwealth households were in this range during the period.

In 2008-2012, the overall poverty rate for the Springboro Public Library service area was higher than Pennsylvania (18.2 percent compared to 13.1 percent). The poverty rate for the population under 18 years of age was 31.2 percent, compared with 14.2 percent of people 18 to 64 years and 12.3 percent for those aged 65 years and over. A total of 107 or 14.3 percent of all families had incomes below poverty level. In 2008-2012, 24.5 percent of families with related children and 27.0 percent of families with a female householder and no husband with related children present had incomes below the poverty level.

**Class of Worker and Occupation:** In 2008-2012, 77.5 percent of the workforce was private wage and salary workers; 12.8 percent were federal, state, or local government workers; and 9.5 percent were self-employed in their own (not incorporated) business.

The top occupation group for the civilian employed population 16 years and over in the Springboro Public Library service area in 2008-2012 was Management, business, science, and arts (27.0 percent).

---

<sup>1</sup> Other race includes those who identified themselves as American Indian/Alaska Native, Asian, Native Hawaiian/Other Pacific Islander, Some Other Race and Two or More Races on the 2010 Census form.

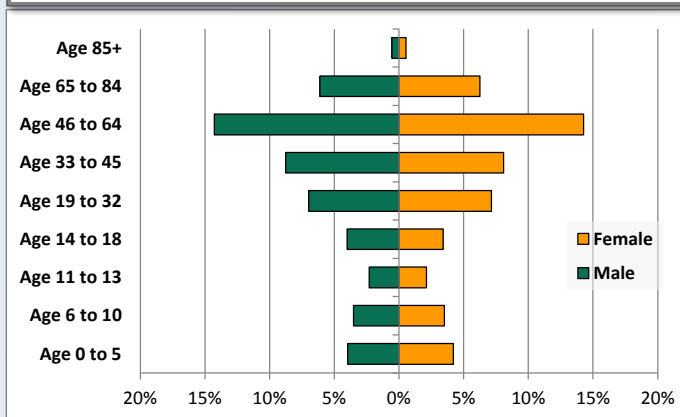
<sup>2</sup> People of Hispanic origin may be of any race.

# Demographic Profile

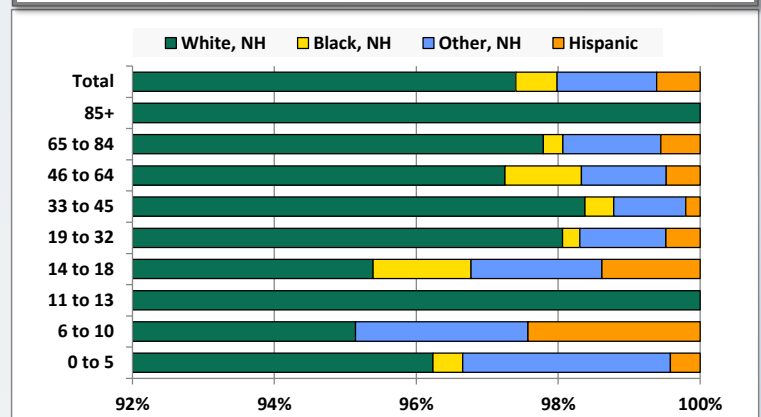
Springboro Public Library

Key Indicators		
	2000	2010
<b>Population Growth</b>		
Total Population	2,965	2,927
10-Year Growth	N/A	-1.3%
<b>Diversity</b>		
White Alone, Non-Hispanic	97.4%	97.4%
Black Alone, Non-Hispanic	1.0%	0.6%
Other Race Alone, Non-Hispanic	1.2%	1.4%
Percent Hispanic	0.4%	0.6%
<b>Aging</b>		
Percent 65 Years and Over	11.6%	13.5%
<b>Households</b>		
Percent Married Couple with Own Children	26.1%	19.5%
Percent Living Alone	19.7%	22.9%

Population by Library-Defined Age Group, 2010



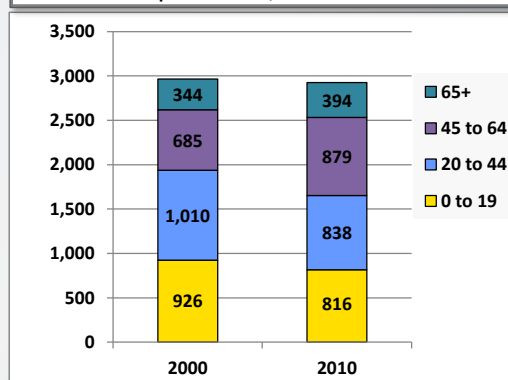
Race/Ethnicity by Library-Defined Age Group, 2010



Population Growth by Library-Defined Age Group, 2000 to 2010

Age Group	2010	Change	
		Numeric	Percent
Total	2,927	-38	-1.3%
85+	32	-7	-17.9%
65 to 84	362	57	18.7%
46 to 64	836	206	32.7%
33 to 45	493	-104	-17.4%
19 to 32	413	-99	-19.3%
14 to 18	217	-56	-20.5%
11 to 13	129	-4	-3.0%
6 to 10	206	-19	-8.4%
0 to 5	239	-12	-4.8%

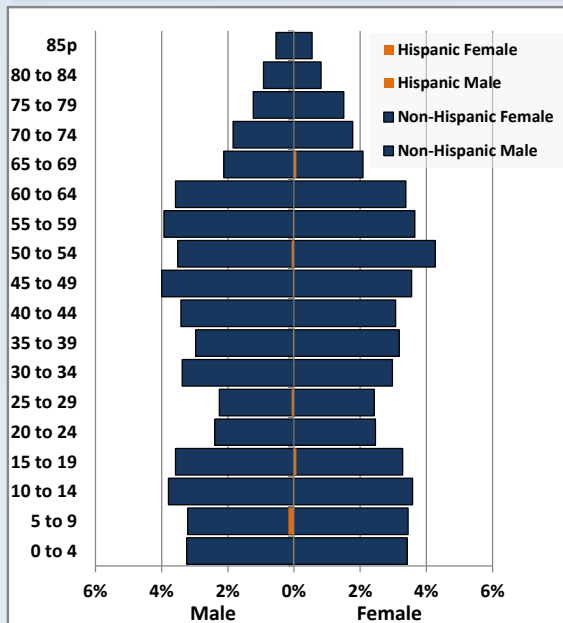
Population Total, 2000 and 2010



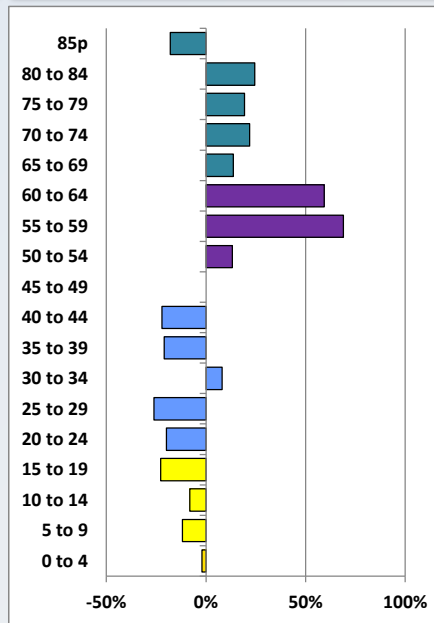
# Demographic Profile

Springboro Public Library

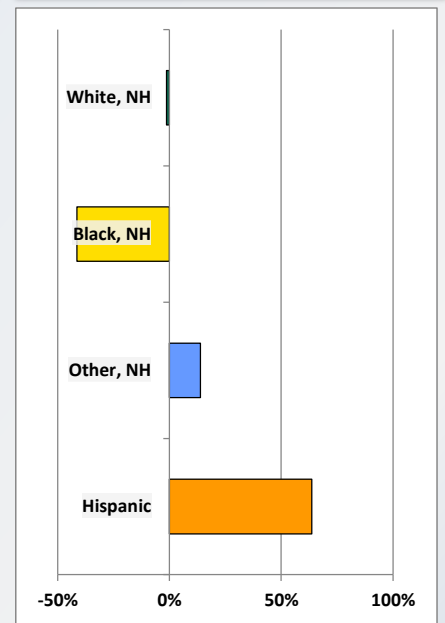
Population by 5-Year Age Cohorts



Pop Change by Age, 2000 to 2010

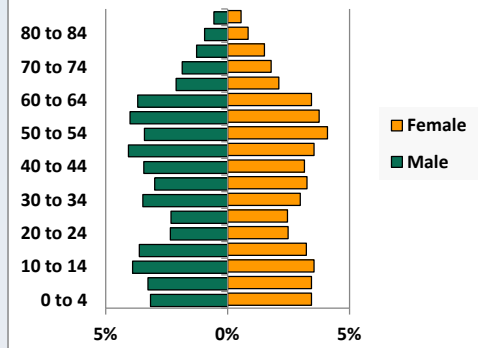


Pop Change by Race/Ethnicity, 2000 to 2010

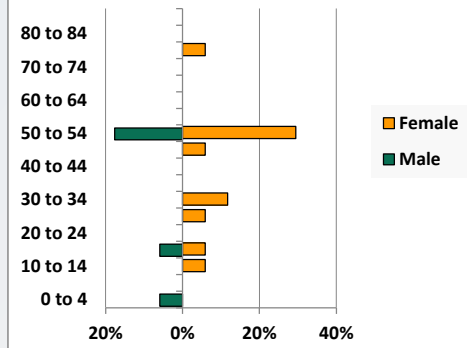


Population by Age, Race and Ethnicity 2010

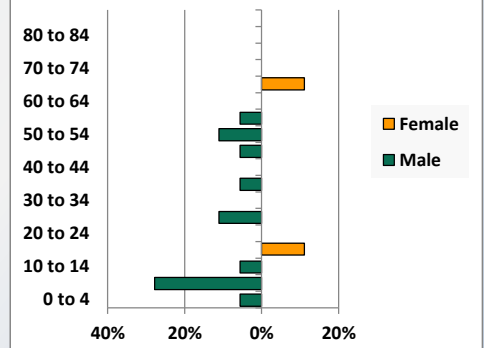
White, Not Hispanic



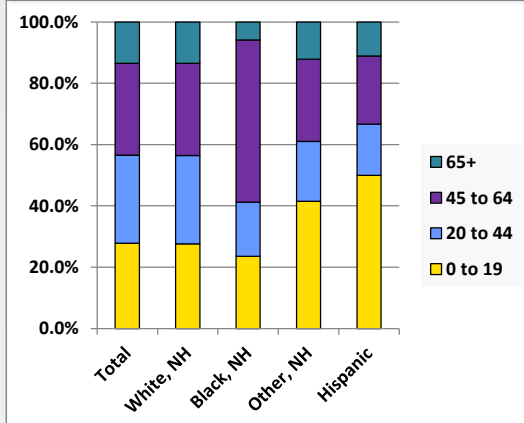
Black, Non-Hispanic



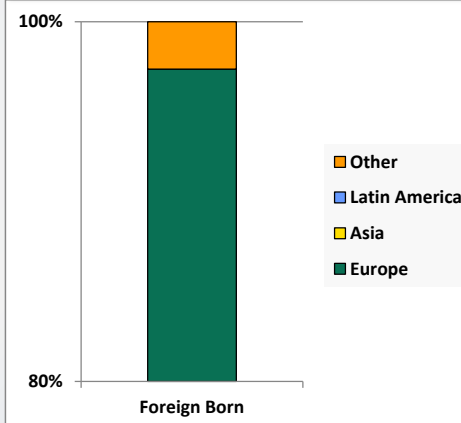
Hispanic



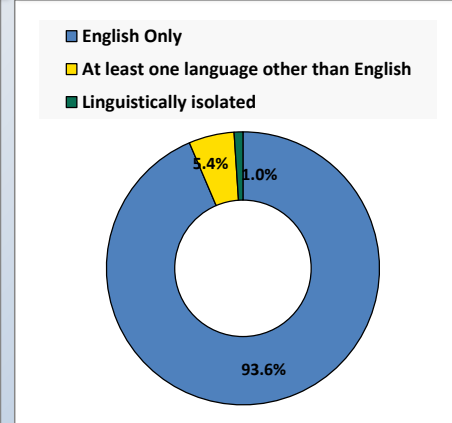
Age by Race and Ethnicity, 2010



Foreign Born, 2010



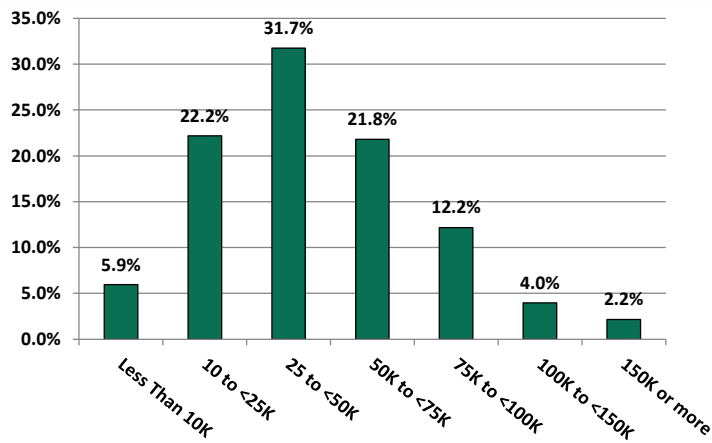
Household Language, 2010



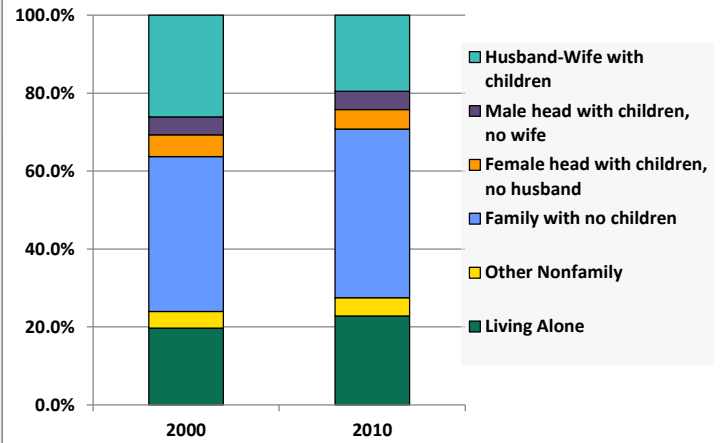
# Demographic Profile

Springboro Public Library

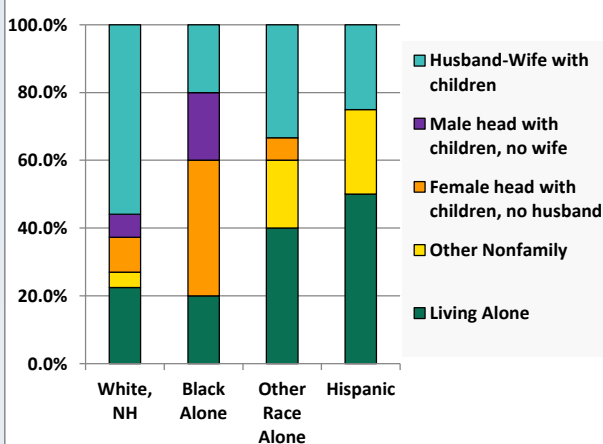
Household Income Distribution, 2008-2012



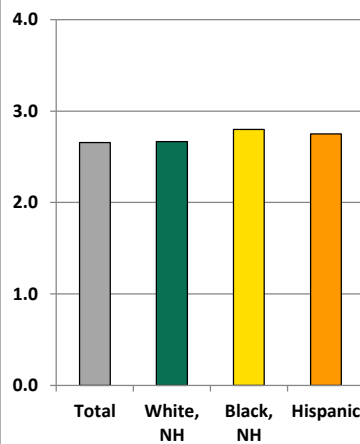
Household Type, 2000 and 2010



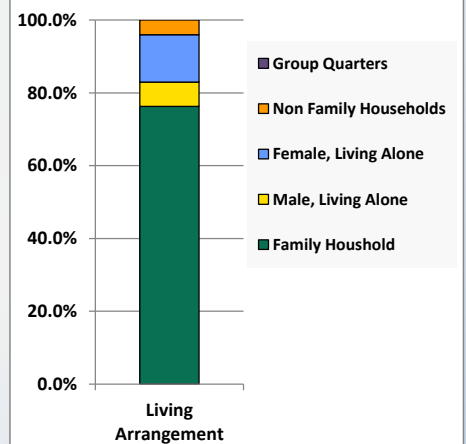
Household Type by Race/Ethnicity, 2010



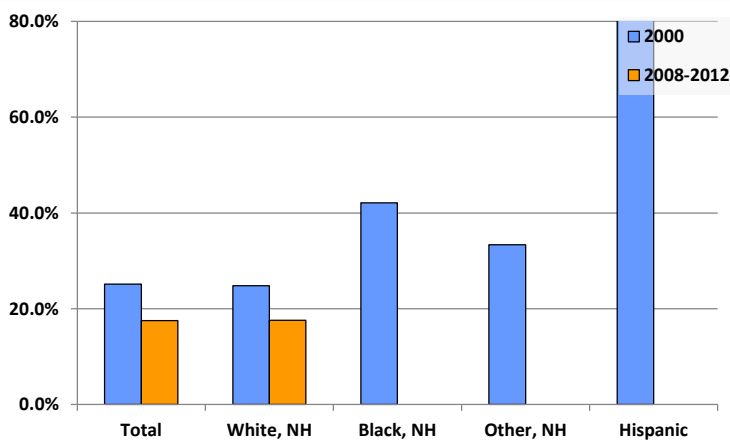
Average Household Size, 2010



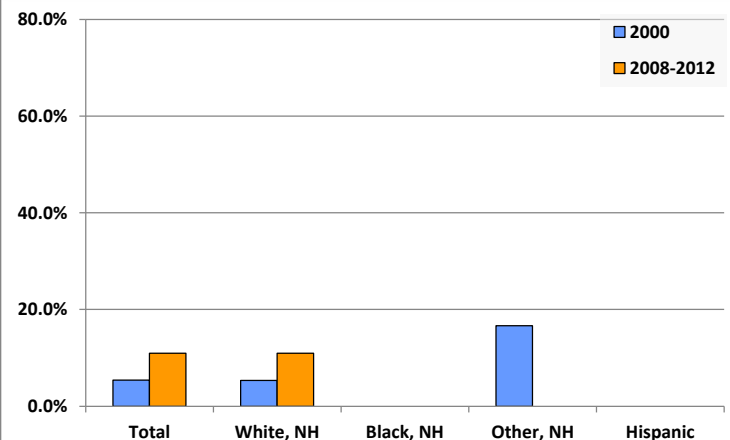
Living Arrangements 65+, 2008-2012



Percent of Adults that Did Not Complete High School



Percent of Adults Who Attained a Bachelor's Degree or Higher



# Reference Data

## Springboro Public Library

	Total Population	White, Non- Hispanic	Black, Non- Hispanic	Other, Non- Hispanic	Detail for Other, Non-Hispanic					Hispanic or Latino
					AIAN	Asian	NHOPI	Some Other Race	Two or More Races	
A. Total Population										
2000 Total	2,965	2,889	29	36	3	7	1	0	25	11
2000 pct of Total	100.0%	97.4%	1.0%	1.2%	0.1%	0.2%	0.0%	0.0%	0.8%	0.4%
2010 Total	2,927	2,851	17	41	2	4	1	0	34	18
2010 pct of Total	100.0%	97.4%	0.6%	1.4%	0.1%	0.1%	0.0%	0.0%	1.2%	0.6%
B. Population by Major Age Groups by Race and Ethnicity										
2000										
0-19	926	893	10	17	0	2	0	0	15	6
20-64	1,695	1,660	15	16	2	3	1	0	10	4
65+	344	336	4	3	1	2	0	0	0	1
85+	39	37	0	1	0	1	0	0	0	1
2010										
0-19	816	786	4	17	0	2	0	0	15	9
20-64	1,717	1,679	12	19	1	2	1	0	15	7
65+	394	386	1	5	1	0	0	0	4	2
85+	32	32	0	0	0	0	0	0	0	0
C. Age Mix for Each Racial and Ethnic Group										
2000										
0-19	31.2%	30.9%	34.5%	47.2%	0.0%	28.6%	0.0%	0.0%	60.0%	54.5%
20-64	57.2%	57.5%	51.7%	44.4%	66.7%	42.9%	100.0%	0.0%	40.0%	36.4%
65+	11.6%	11.6%	13.8%	8.3%	33.3%	28.6%	0.0%	0.0%	0.0%	9.1%
85+	1.3%	1.3%	0.0%	2.8%	0.0%	14.3%	0.0%	0.0%	0.0%	9.1%
2010										
0-19	27.9%	27.6%	23.5%	41.5%	0.0%	50.0%	0.0%	0.0%	44.1%	50.0%
20-64	58.7%	58.9%	70.6%	46.3%	50.0%	50.0%	100.0%	0.0%	44.1%	38.9%
65+	13.5%	13.5%	5.9%	12.2%	50.0%	0.0%	0.0%	0.0%	11.8%	11.1%
85+	1.1%	1.1%	0.0%	0.0%	0.0%	0.0%	0.0%	0.0%	0.0%	0.0%
D. Racial and Ethnic Composition of Each Age Group										
2000										
0-19	100.0%	96.4%	1.1%	1.8%	0.0%	0.2%	0.0%	0.0%	1.6%	0.6%
20-64	100.0%	97.9%	0.9%	0.9%	0.1%	0.2%	0.1%	0.0%	0.6%	0.2%
65+	100.0%	97.7%	1.2%	0.9%	0.3%	0.6%	0.0%	0.0%	0.0%	0.3%
85+	100.0%	94.9%	0.0%	2.6%	0.0%	2.6%	0.0%	0.0%	0.0%	2.6%
2010										
0-19	100.0%	96.3%	0.5%	2.1%	0.0%	0.2%	0.0%	0.0%	1.8%	1.1%
20-64	100.0%	97.8%	0.7%	1.1%	0.1%	0.1%	0.1%	0.0%	0.9%	0.4%
65+	100.0%	98.0%	0.3%	1.3%	0.3%	0.0%	0.0%	0.0%	1.0%	0.5%
85+	100.0%	100.0%	0.0%	0.0%	0.0%	0.0%	0.0%	0.0%	0.0%	0.0%
E. Population Growth										
2000-2010, Change										
0-19	-110	-107	-6	0	0	0	0	0	0	3
20-64	22	19	-3	3	-1	-1	0	0	5	3
65+	50	50	-3	2	0	-2	0	0	4	1
85+	-7	-5	0	-1	0	-1	0	0	0	-1
Total	-38	-38	-12	5	-1	-3	0	0	9	7
2000-2010, Pct Change										
0-19	-11.9%	-12.0%	-60.0%	0.0%	0.0%	0.0%	0.0%	0.0%	0.0%	50.0%
20-64	1.3%	1.1%	-20.0%	18.8%	-50.0%	-33.3%	0.0%	0.0%	50.0%	75.0%
65+	14.5%	14.9%	-75.0%	66.7%	0.0%	-100.0%	0.0%	0.0%	0.0%	100.0%
85+	-17.9%	-13.5%	0.0%	-100.0%	0.0%	-100.0%	0.0%	0.0%	0.0%	-100.0%
Total	-1.3%	-1.3%	-41.4%	13.9%	-33.3%	-42.9%	0.0%	0.0%	36.0%	63.6%

Source: Decennial Census 2010, 2000, American Community Survey 2008-2012

Prepared for the Pennsylvania State Library by The Pennsylvania State Data Center, 9/2014

# Reference Data

## Springboro Public Library

	Total Population	White, Non- Hispanic	Black, Non- Hispanic	Other, Non- Hispanic	Detail for Other, Non-Hispanic					Hispanic or Latino
					AIAN	Asian	NHOPI	Some Other	Two or More	
								Race	Races	
F. Population by Library-Defined Age Groups, 2010										
0-5	239	230	1	7	0	0	0	0	7	1
6-10	206	196	0	5	0	2	0	0	3	5
11-13	129	129	0	0	0	0	0	0	0	0
14-18	217	207	3	4	0	0	0	0	4	3
19-32	413	405	1	5	0	0	0	0	5	2
33-45	493	485	2	5	0	0	1	0	4	1
46-64	836	813	9	10	1	2	0	0	7	4
65-84	362	354	1	5	1	0	0	0	4	2
85+	32	32	0	0	0	0	0	0	0	0
Total	2,927	2,851	17	41	2	4	1	0	34	18
G. Population by 5-Year Age Cohorts, 2010										
0-4	196	188	1	6	0	0	0	0	6	1
5-9	200	191	0	4	0	1	0	0	3	5
10-14	217	212	1	3	0	1	0	0	2	1
15-19	203	195	2	4	0	0	0	0	4	2
20-24	142	138	0	4	0	0	0	0	4	0
25-29	139	136	1	0	0	0	0	0	0	2
30-34	186	184	2	0	0	0	0	0	0	0
35-39	181	178	0	2	0	0	0	0	2	1
40-44	190	188	0	2	0	0	0	0	2	0
45-49	222	217	1	3	0	1	1	0	1	1
50-54	230	214	8	6	1	1	0	0	4	2
55-59	223	221	0	1	0	0	0	0	1	1
60-64	204	203	0	1	0	0	0	0	1	0
65-69	125	120	0	3	0	0	0	0	3	2
70-74	106	104	0	2	1	0	0	0	1	0
75-79	80	79	1	0	0	0	0	0	0	0
80-84	51	51	0	0	0	0	0	0	0	0
85-89	30	30	0	0	0	0	0	0	0	0
90-94	1	1	0	0	0	0	0	0	0	0
95-99	1	1	0	0	0	0	0	0	0	0
100+	0	0	0	0	0	0	0	0	0	0
Total	2,927	2,851	17	41	2	4	1	0	34	18

Source: Decennial Census 2010, 2000, American Community Survey 2008-2012

Prepared for the Pennsylvania State Library by The Pennsylvania State Data Center, 9/2014

# Reference Data

## Springboro Public Library

### H. Income Distribution, 2008-2012

Range (in thousands)	Households	Pct of Total
<\$10K	63	5.9%
\$10K to <\$25K	235	22.2%
\$25K to <\$50K	336	31.7%
\$50K to <\$75K	231	21.8%
\$75K to <\$100K	129	12.2%
\$100K to <\$150K	42	4.0%
\$150K+	23	2.2%

### I. Household Type, 2010

Household Type	2000	2000pct	2010	2010pct
Total Households	1,076	100.0%	1,102	100.0%
Family Households	818	76.0%	799	72.5%
Husband-wife, no children w/children	281	26.1%	215	19.5%
Female head, no husband, w/ children	60	5.6%	55	5.0%
Male head, no wife, w/ children	49	4.6%	52	4.7%
Without children	428	39.8%	477	43.3%
Nonfamily households	258	24.0%	303	27.5%
Living alone	212	19.7%	252	22.9%
Other nonfamily	46	4.3%	51	4.6%

### J. Household Type by Race and Ethnicity, 2008-2012

Household Type	White, NH	Black, NH	Other, NH	Hispanic
Total Households	1,079	5	15	4
Husband wife family	55.9%	20.0%	33.3%	25.0%
Family with male head, no wife	6.9%	20.0%	0.0%	0.0%
family with female head, no husband	10.3%	40.0%	6.7%	0.0%
Living alone	22.5%	20.0%	40.0%	50.0%
Other nonfamily	4.4%	0.0%	20.0%	25.0%

### K. Poverty, 2008-2012

Families	Poverty	PA
All families	14.3%	9.1%
Families w/ related children	24.5%	15.3%
Female householder, no husband present	21.0%	28.8%
Female householder, no husband present, w/ related children	27.0%	39.2%
All people	18.2%	13.1%
Under 18 years	31.2%	18.4%
18 to 64 years	14.2%	12.3%
65 years and over	12.3%	8.4%

### L. Educational Attainment by Race and Ethnicity, 2008-2012

Education Level	White, NH	Black	Other	Hispanic	Total
Population 25 years and over	1,875	4	2	0	1,881
Less than high school	17.6%	0.0%	0%	0.0%	17.5%
High school graduate (includes equivalency	48.4%	0.0%	100%	0.0%	48.4%
Some college or associates degree	23.0%	100.0%	0%	0.0%	23.1%
Bachelors degree or higher	11.0%	0.0%	0%	0.0%	11.0%

### M. Occupation, 2008-2012

Occupation	Estimate	Percent
Civilian population age 16 years and over	1,164	100.0%
Management, professional, and related occupations	314	27.0%
Service occupations	218	18.7%
Sales and office occupations	236	20.3%
Farming, fishing, and forestry occupations	21	1.8%
Construction, extraction, maintenance, and repair occupations	156	13.4%
Production, transportation, and material moving occupations	219	18.8%

### N. Class of Worker, 2008-2012

Occupation	Estimate	Percent
Civilian population age 16 years and over	1,164	100.0%
Private, for profit, wage and salary employee	781	67.1%
Private, not for profit, wage and salary employee	93	8.0%
Private, for profit, wage and salary self-employed in own business	28	2.4%
Government workers	149	12.8%
Self-employed in own not incorporated business	111	9.5%
Unpaid family workers in family business	2	0.2%