

Demographic Profile Springdale Free Public Library

Population Growth: The total population of the Springdale Free Public Library service area decreased by -9.9 percent over the past decade to 9,708; this decline rate was lower than the statewide rate of 3.4 percent.

Age and Sex: In 2010, the Springdale Free Public Library service area had a total population of 9,708 - 4,554 males (46.9 percent) and 5,154 females (53.1 percent). The age structure of the population in 2010 was as follows: 17.0 percent of the population was under 20 years old, 58.4 percent was 20 to 64 years old and 24.7 percent was 65 years or older.

Race and Ethnicity: For people reporting one race alone, not of Hispanic ethnicity, 97.8 percent were White; .4 percent were Black or African American; 1.0 percent were Other Race Alone.¹ A total of 71 or .7 percent of the population were Hispanic.²

Households: In 2010, there were 4,613 households in the Springdale Free Public Library service area. The average household size was 2.05 people. Families made up 56.8 percent of the households. This figure includes both families with (17.6 percent) and without (39.2 percent) children. Of families with children less than 18 years old, 12.2 percent were married-couple families, 4.1 percent were female householder families with no husband present, and the remaining (1.3 percent) were male-headed households with no wife present.

Education: The educational attainment of the population 25 years and over was lower in the Springdale Free Public Library service area than in Pennsylvania. During the period 2008-2012, 23.1 percent of residents had earned a Bachelor's degree or higher, compared with 27.0 percent statewide. A total of 666 or 8.9 percent had not completed high school, compared with 11.7 percent for the commonwealth as a whole.

Income and Poverty: Households with incomes of \$25,000 to \$49,999 (25.6 percent) made up the largest percent of households in the Springdale Free Public Library service area in 2008-2012. For comparison, 24.4 percent of commonwealth households were in this range during the period.

In 2008-2012, the overall poverty rate for the Springdale Free Public Library service area was lower than Pennsylvania (8.9 percent compared to 13.1 percent). The poverty rate for the population under 18 years of age was 16.0 percent, compared with 7.2 percent of people 18 to 64 years and 8.2 percent for those aged 65 years and over. A total of 139 or 5.5 percent of all families had incomes below poverty level. In 2008-2012, 13.2 percent of families with related children and 23.8 percent of families with a female householder and no husband with related children present had incomes below the poverty level.

Class of Worker and Occupation: In 2008-2012, 85.5 percent of the workforce was private wage and salary workers; 11.7 percent were federal, state, or local government workers; and 2.9 percent were self-employed in their own (not incorporated) business.

The top occupation group for the civilian employed population 16 years and over in the Springdale Free Public Library service area in 2008-2012 was Management, business, science, and arts (35.2 percent).

¹ Other race includes those who identified themselves as American Indian/Alaska Native, Asian, Native Hawaiian/Other Pacific Islander, Some Other Race and Two or More Races on the 2010 Census form.

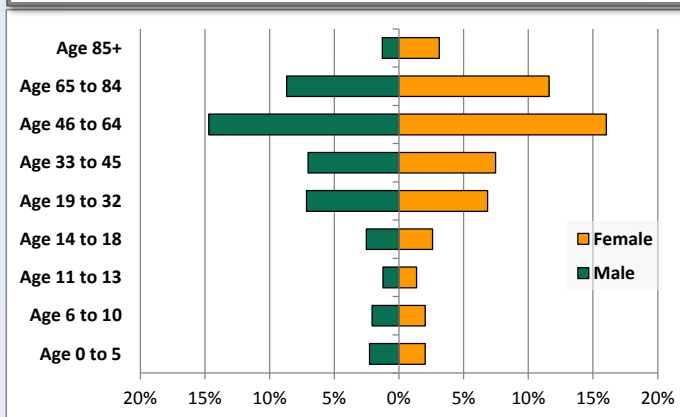
² People of Hispanic origin may be of any race.

Demographic Profile

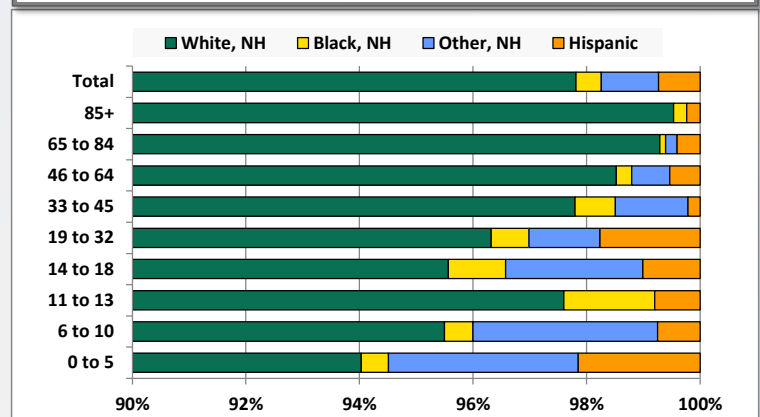
Springdale Free Public Library

Key Indicators		
	2000	2010
Population Growth		
Total Population	10,771	9,708
10-Year Growth	N/A	-9.9%
Diversity		
White Alone, Non-Hispanic	98.5%	97.8%
Black Alone, Non-Hispanic	0.4%	0.4%
Other Race Alone, Non-Hispanic	0.8%	1.0%
Percent Hispanic	0.3%	0.7%
Aging		
Percent 65 Years and Over	22.3%	24.7%
Households		
Percent Married Couple with Own Children	16.9%	12.2%
Percent Living Alone	33.2%	38.0%

Population by Library-Defined Age Group, 2010



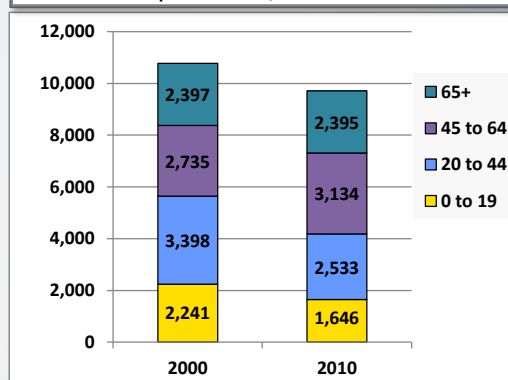
Race/Ethnicity by Library-Defined Age Group, 2010



Population Growth by Library-Defined Age Group, 2000 to 2010

Age Group	2010	Change	
		Numeric	Percent
Total	9,708	-1,063	-9.9%
85+	427	223	109.3%
65 to 84	1,968	-225	-10.3%
46 to 64	2,982	430	16.8%
33 to 45	1,407	-839	-37.4%
19 to 32	1,359	-53	-3.8%
14 to 18	496	-120	-19.5%
11 to 13	250	-102	-29.0%
6 to 10	400	-192	-32.4%
0 to 5	419	-185	-30.6%

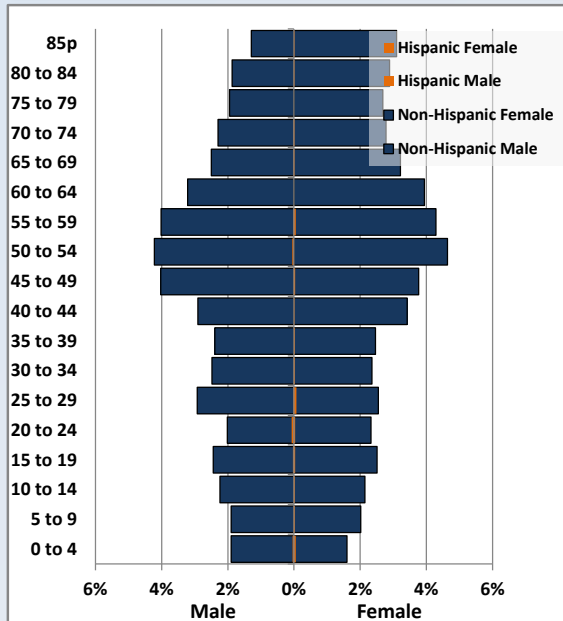
Population Total, 2000 and 2010



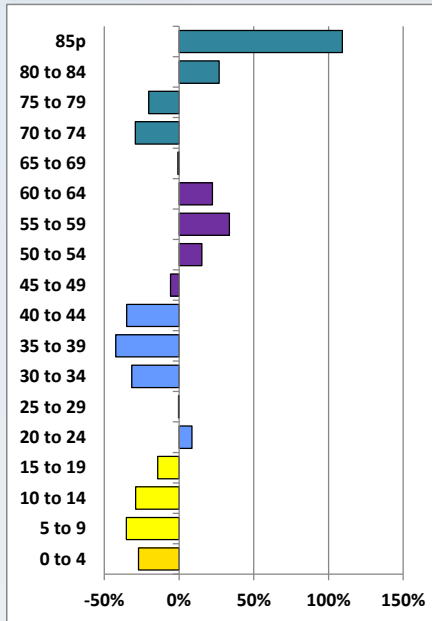
Demographic Profile

Springdale Free Public Library

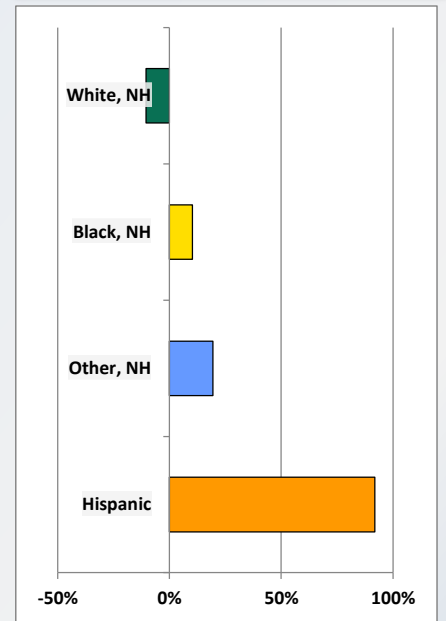
Population by 5-Year Age Cohorts



Pop Change by Age, 2000 to 2010

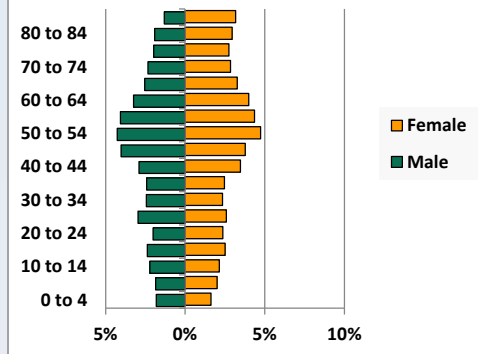


Pop Change by Race/Ethnicity, 2000 to 2010

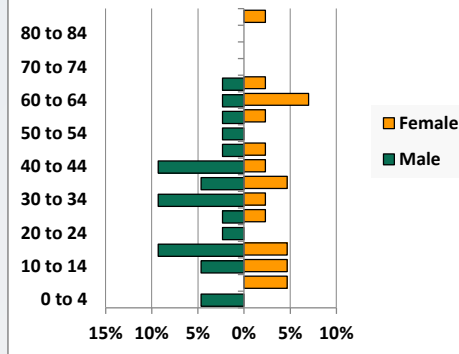


Population by Age, Race and Ethnicity 2010

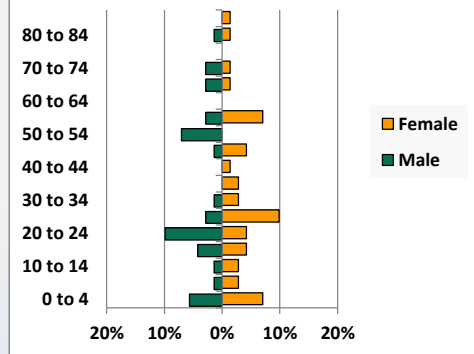
White, Not Hispanic



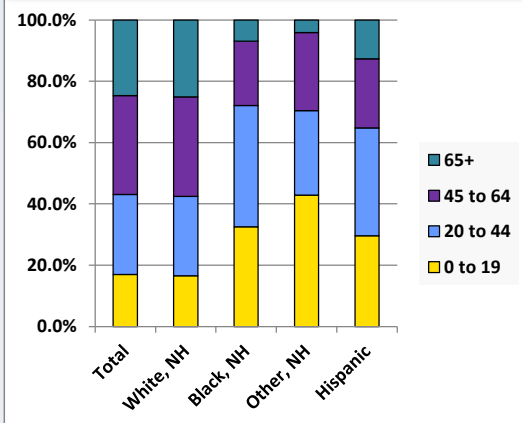
Black, Non-Hispanic



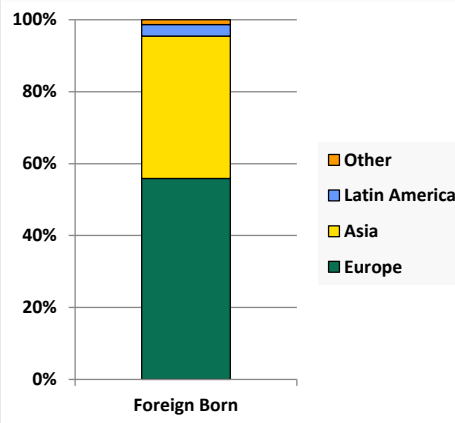
Hispanic



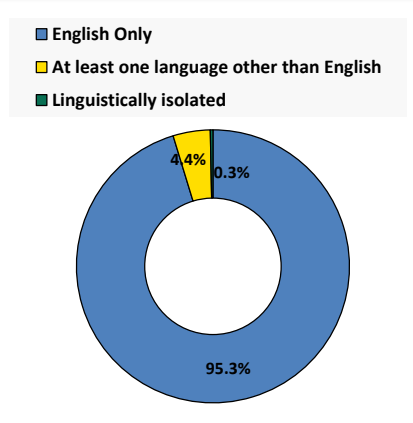
Age by Race and Ethnicity, 2010



Foreign Born, 2010



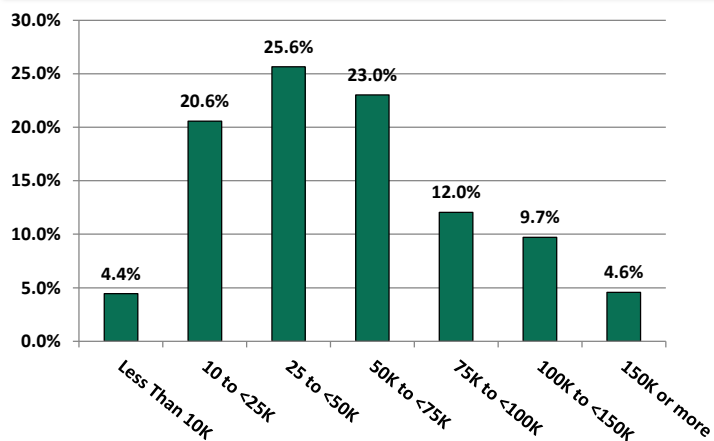
Household Language, 2010



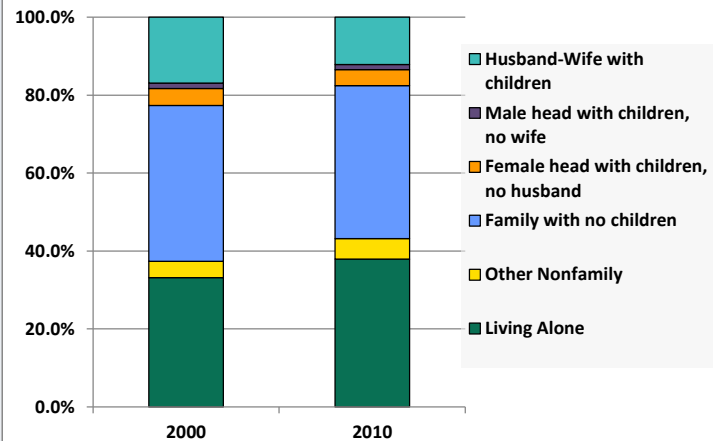
Demographic Profile

Springdale Free Public Library

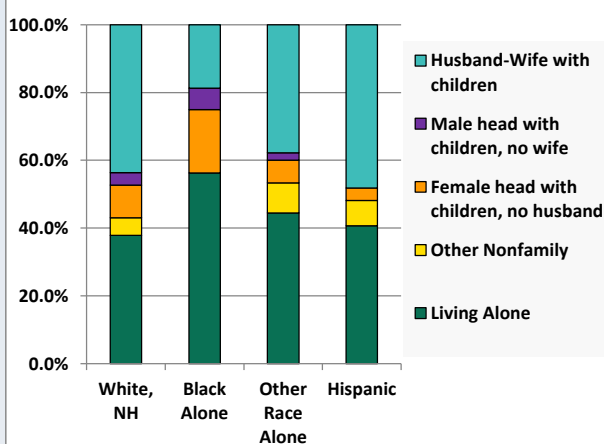
Household Income Distribution, 2008-2012



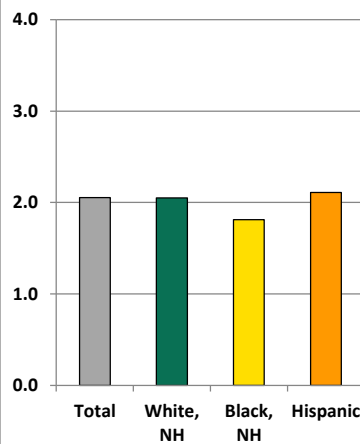
Household Type, 2000 and 2010



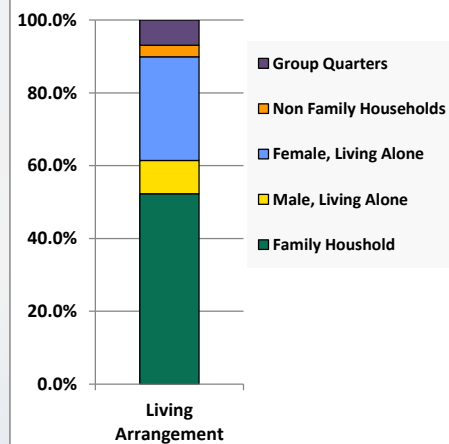
Household Type by Race/Ethnicity, 2010



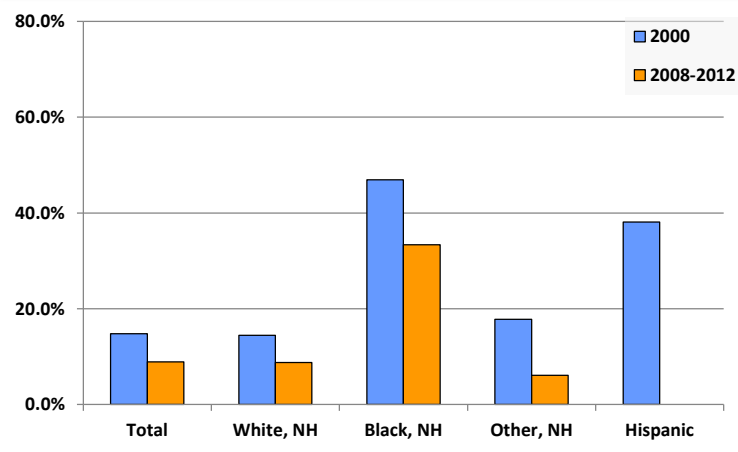
Average Household Size, 2010



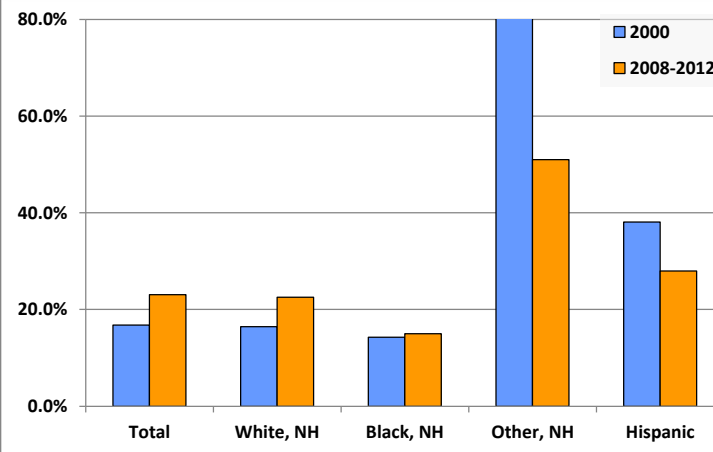
Living Arrangements 65+, 2008-2012



Percent of Adults that Did Not Complete High School



Percent of Adults Who Attained a Bachelor's Degree or Higher



Reference Data

Springdale Free Public Library

	Total Population	White, Non- Hispanic	Black, Non- Hispanic	Other, Non- Hispanic	Detail for Other, Non-Hispanic					Hispanic or Latino
					AIAN	Asian	NHOPI	Some Other Race	Two or More Races	
A. Total Population										
2000 Total	10,771	10,613	39	82	7	41	0	5	29	37
2000 pct of Total	100.0%	98.5%	0.4%	0.8%	0.1%	0.4%	0.0%	0.0%	0.3%	0.3%
2010 Total	9,708	9,496	43	98	3	32	1	6	56	71
2010 pct of Total	100.0%	97.8%	0.4%	1.0%	0.0%	0.3%	0.0%	0.1%	0.6%	0.7%
B. Population by Major Age Groups by Race and Ethnicity										
2000										
0-19	2,241	2,179	7	34	1	13	0	2	18	21
20-64	6,133	6,049	28	41	6	26	0	2	7	15
65+	2,397	2,385	4	7	0	2	0	1	4	1
85+	204	202	0	1	0	1	0	0	0	1
2010										
0-19	1,646	1,569	14	42	0	7	0	4	31	21
20-64	5,667	5,548	26	52	3	23	0	2	24	41
65+	2,395	2,379	3	4	0	2	1	0	1	9
85+	427	425	1	0	0	0	0	0	0	1
C. Age Mix for Each Racial and Ethnic Group										
2000										
0-19	20.8%	20.5%	17.9%	41.5%	14.3%	31.7%	0.0%	40.0%	62.1%	56.8%
20-64	56.9%	57.0%	71.8%	50.0%	85.7%	63.4%	0.0%	40.0%	24.1%	40.5%
65+	22.3%	22.5%	10.3%	8.5%	0.0%	4.9%	0.0%	20.0%	13.8%	2.7%
85+	1.9%	1.9%	0.0%	1.2%	0.0%	2.4%	0.0%	0.0%	0.0%	2.7%
2010										
0-19	17.0%	16.5%	32.6%	42.9%	0.0%	21.9%	0.0%	66.7%	55.4%	29.6%
20-64	58.4%	58.4%	60.5%	53.1%	100.0%	71.9%	0.0%	33.3%	42.9%	57.7%
65+	24.7%	25.1%	7.0%	4.1%	0.0%	6.3%	100.0%	0.0%	1.8%	12.7%
85+	4.4%	4.5%	2.3%	0.0%	0.0%	0.0%	0.0%	0.0%	0.0%	1.4%
D. Racial and Ethnic Composition of Each Age Group										
2000										
0-19	100.0%	97.2%	0.3%	1.5%	0.0%	0.6%	0.0%	0.1%	0.8%	0.9%
20-64	100.0%	98.6%	0.5%	0.7%	0.1%	0.4%	0.0%	0.0%	0.1%	0.2%
65+	100.0%	99.5%	0.2%	0.3%	0.0%	0.1%	0.0%	0.0%	0.2%	0.0%
85+	100.0%	99.0%	0.0%	0.5%	0.0%	0.5%	0.0%	0.0%	0.0%	0.5%
2010										
0-19	100.0%	95.3%	0.9%	2.6%	0.0%	0.4%	0.0%	0.2%	1.9%	1.3%
20-64	100.0%	97.9%	0.5%	0.9%	0.1%	0.4%	0.0%	0.0%	0.4%	0.7%
65+	100.0%	99.3%	0.1%	0.2%	0.0%	0.1%	0.0%	0.0%	0.0%	0.4%
85+	100.0%	99.5%	0.2%	0.0%	0.0%	0.0%	0.0%	0.0%	0.0%	0.2%
E. Population Growth										
2000-2010, Change										
0-19	-595	-610	7	8	-1	-6	0	2	13	0
20-64	-466	-501	-2	11	-3	-3	0	0	17	26
65+	-2	-6	-1	-3	0	0	1	-1	-3	8
85+	223	223	1	-1	0	-1	0	0	0	0
Total	-1,063	-1,117	4	16	-4	-9	1	1	27	34
2000-2010, Pct Change										
0-19	-26.6%	-28.0%	100.0%	23.5%	-100.0%	-46.2%	0.0%	100.0%	72.2%	0.0%
20-64	-7.6%	-8.3%	-7.1%	26.8%	-50.0%	-11.5%	0.0%	0.0%	242.9%	173.3%
65+	-0.1%	-0.3%	-25.0%	-42.9%	0.0%	0.0%	0.0%	-100.0%	-75.0%	800.0%
85+	109.3%	110.4%	0.0%	-100.0%	0.0%	-100.0%	0.0%	0.0%	0.0%	0.0%
Total	-9.9%	-10.5%	10.3%	19.5%	-57.1%	-22.0%	0.0%	20.0%	93.1%	91.9%

Source: Decennial Census 2010, 2000, American Community Survey 2008-2012

Prepared for the Pennsylvania State Library by The Pennsylvania State Data Center, 9/2014

Reference Data

Springdale Free Public Library

					Detail for Other, Non-Hispanic					Hispanic or Latino
	Total Population	White, Non-Hispanic	Black, Non-Hispanic	Other, Non-Hispanic	AIAN	Asian	NHOPI	Some Other	Two or More	
								Race	Races	
F. Population by Library-Defined Age Groups, 2010										
0-5	419	394	2	14	0	3	0	0	11	9
6-10	400	382	2	13	0	2	0	0	11	3
11-13	250	244	4	0	0	0	0	0	0	2
14-18	496	474	5	12	0	2	0	3	7	5
19-32	1,359	1,309	9	17	1	6	0	2	8	24
33-45	1,407	1,376	10	18	0	6	0	1	11	3
46-64	2,982	2,938	8	20	2	11	0	0	7	16
65-84	1,968	1,954	2	4	0	2	1	0	1	8
85+	427	425	1	0	0	0	0	0	0	1
Total	9,708	9,496	43	98	3	32	1	6	56	71
G. Population by 5-Year Age Cohorts, 2010										
0-4	348	326	2	11	0	2	0	0	9	9
5-9	383	365	2	13	0	3	0	0	10	3
10-14	428	414	4	7	0	0	0	2	5	3
15-19	487	464	6	11	0	2	0	2	7	6
20-24	432	415	1	6	0	3	0	0	3	10
25-29	540	526	2	3	1	0	0	0	2	9
30-34	473	454	5	11	0	4	0	1	6	3
35-39	473	463	4	4	0	1	0	0	3	2
40-44	615	606	5	3	0	2	0	0	1	1
45-49	761	740	2	15	1	9	0	1	4	4
50-54	865	856	1	3	0	2	0	0	1	5
55-59	813	801	2	3	0	1	0	0	2	7
60-64	695	687	4	4	1	1	0	0	2	0
65-69	558	551	2	2	0	1	1	0	0	3
70-74	496	493	0	0	0	0	0	0	0	3
75-79	450	448	0	2	0	1	0	0	1	0
80-84	464	462	0	0	0	0	0	0	0	2
85-89	270	269	0	0	0	0	0	0	0	1
90-94	121	120	1	0	0	0	0	0	0	0
95-99	34	34	0	0	0	0	0	0	0	0
100+	2	2	0	0	0	0	0	0	0	0
Total	9,708	9,496	43	98	3	32	1	6	56	71

Source: Decennial Census 2010, 2000, American Community Survey 2008-2012

Prepared for the Pennsylvania State Library by The Pennsylvania State Data Center, 9/2014

H. Income Distribution, 2008-2012

Range (in thousands)	Households	Pct of Total
<\$10K	201	4.4%
\$10K to <\$25K	930	20.6%
\$25K to <\$50K	1,159	25.6%
\$50K to <\$75K	1,040	23.0%
\$75K to <\$100K	544	12.0%
\$100K to <\$150K	439	9.7%
\$150K+	207	4.6%

I. Household Type, 2010

Household Type	2000	2000pct	2010	2010pct
Total Households	4,857	100.0%	4,613	100.0%
Family Households	3,042	62.6%	2,621	56.8%
Husband-wife, no children w/children	821	16.9%	561	12.2%
Female head, no husband, w/ children	215	4.4%	190	4.1%
Male head, no wife, w/ children	66	1.4%	60	1.3%
Without children	1,940	39.9%	1,810	39.2%
Nonfamily households	1,815	37.4%	1,992	43.2%
Living alone	1,612	33.2%	1,752	38.0%
Other nonfamily	203	4.2%	240	5.2%

J. Household Type by Race and Ethnicity, 2008-2012

Household Type	White, NH	Black, NH	Other, NH	Hispanic
Total Households	4,532	16	45	27
Husband wife family	43.6%	18.8%	37.8%	48.1%
Family with male head, no wife	3.7%	6.3%	2.2%	0.0%
family with female head, no husband	9.6%	18.8%	6.7%	3.7%
Living alone	37.9%	56.3%	44.4%	40.7%
Other nonfamily	5.2%	0.0%	8.9%	7.4%

K. Poverty, 2008-2012

Families	Poverty	PA
All families	5.5%	9.1%
Families w/ related children	13.2%	15.3%
Female householder, no husband present	16.1%	28.8%
Female householder, no husband present, w/ related children	23.8%	39.2%
All people	8.9%	13.1%
Under 18 years	16.0%	18.4%
18 to 64 years	7.2%	12.3%
65 years and over	8.2%	8.4%

L. Educational Attainment by Race and Ethnicity, 2008-2012

Education Level	White, NH	Black	Other	Hispanic	Total
Population 25 years and over	7,243	60	147	25	7,470
Less than high school	8.8%	33.3%	6%	0.0%	8.9%
High school graduate (includes equivalency)	39.7%	50.0%	12%	32.0%	39.3%
Some college or associates degree	28.9%	1.7%	31%	40.0%	28.8%
Bachelors degree or higher	22.6%	15.0%	51%	28.0%	23.1%

M. Occupation, 2008-2012

Occupation	Estimate	Percent
Civilian population age 16 years and over	4,682	100.0%
Management, professional, and related occupations	1,647	35.2%
Service occupations	869	18.6%
Sales and office occupations	1,188	25.4%
Farming, fishing, and forestry occupations	0	0.0%
Construction, extraction, maintenance, and repair occupations	387	8.3%
Production, transportation, and material moving occupations	591	12.6%

N. Class of Worker, 2008-2012

Occupation	Estimate	Percent
Civilian population age 16 years and over	4,682	100.0%
Private, for profit, wage and salary employee	3,375	72.1%
Private, not for profit, wage and salary employee	515	11.0%
Private, for profit, wage and salary self-employed in own business	111	2.4%
Government workers	546	11.7%
Self-employed in own not incorporated business	135	2.9%
Unpaid family workers in family business	0	0.0%