

## Demographic Profile Strasburg-Heisler Library

**Population Growth:** The total population of the Strasburg-Heisler Library service area increased by 2.5 percent over the past decade to 6,991; this growth rate was lower than the statewide rate of 3.4 percent.

**Age and Sex:** In 2010, the Strasburg-Heisler Library service area had a total population of 6,991 - 3,480 males (49.8 percent) and 3,511 females (50.2 percent). The age structure of the population in 2010 was as follows: 31.7 percent of the population was under 20 years old, 55.1 percent was 20 to 64 years old and 13.2 percent was 65 years or older.

**Race and Ethnicity:** For people reporting one race alone, not of Hispanic ethnicity, 96.1 percent were White; .4 percent were Black or African American; 1.6 percent were Other Race Alone.<sup>1</sup> A total of 136 or 1.9 percent of the population were Hispanic.<sup>2</sup>

**Households:** In 2010, there were 2,425 households in the Strasburg-Heisler Library service area. The average household size was 2.88 people. Families made up 77.8 percent of the households. This figure includes both families with (34.1 percent) and without (43.7 percent) children. Of families with children less than 18 years old, 28.4 percent were married-couple families, 3.9 percent were female householder families with no husband present, and the remaining (1.8 percent) were male-headed households with no wife present.

**Education:** The educational attainment of the population 25 years and over was lower in the Strasburg-Heisler Library service area than in Pennsylvania. During the period 2008-2012, 25.8 percent of residents had earned a Bachelor's degree or higher, compared with 27.0 percent statewide. A total of 358 or 8.3 percent had not completed high school, compared with 11.7 percent for the commonwealth as a whole.

**Income and Poverty:** Households with incomes of \$100,000 or More (28.0 percent) made up the largest percent of households in the Strasburg-Heisler Library service area in 2008-2012. For comparison, 20.8 percent of commonwealth households were in this range during the period.

In 2008-2012, the overall poverty rate for the Strasburg-Heisler Library service area was lower than Pennsylvania (9.2 percent compared to 13.1 percent). The poverty rate for the population under 18 years of age was 14.5 percent, compared with 6.6 percent of people 18 to 64 years and 11.4 percent for those aged 65 years and over. A total of 140 or 7.4 percent of all families had incomes below poverty level. In 2008-2012, 11.3 percent of families with related children and 41.5 percent of families with a female householder and no husband with related children present had incomes below the poverty level.

**Class of Worker and Occupation:** In 2008-2012, 84.0 percent of the workforce was private wage and salary workers; 8.5 percent were federal, state, or local government workers; and 7.3 percent were self-employed in their own (not incorporated) business.

The top occupation group for the civilian employed population 16 years and over in the Strasburg-Heisler Library service area in 2008-2012 was Management, business, science, and arts (29.5 percent).

---

<sup>1</sup> Other race includes those who identified themselves as American Indian/Alaska Native, Asian, Native Hawaiian/Other Pacific Islander, Some Other Race and Two or More Races on the 2010 Census form.

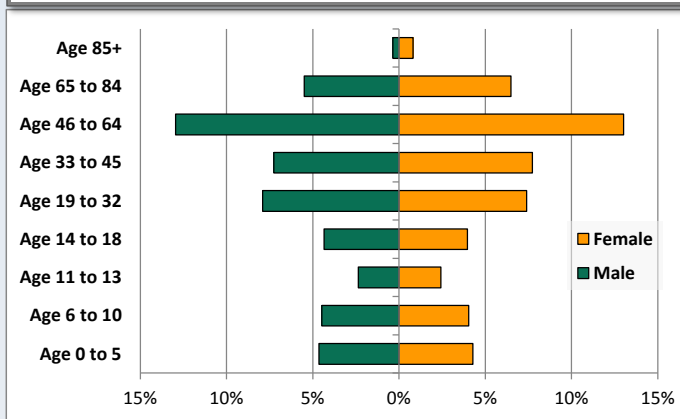
<sup>2</sup> People of Hispanic origin may be of any race.

# Demographic Profile

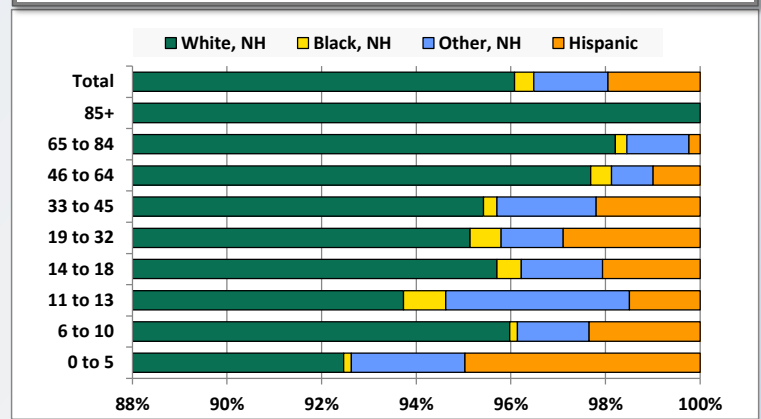
Strasburg-Heisler Library

Key Indicators		
	2000	2010
<b>Population Growth</b>		
Total Population	6,821	6,991
10-Year Growth	N/A	2.5%
<b>Diversity</b>		
White Alone, Non-Hispanic	98.3%	96.1%
Black Alone, Non-Hispanic	0.3%	0.4%
Other Race Alone, Non-Hispanic	1.0%	1.6%
Percent Hispanic	0.3%	1.9%
<b>Aging</b>		
Percent 65 Years and Over	11.1%	13.2%
<b>Households</b>		
Percent Married Couple with Own Children	34.3%	28.4%
Percent Living Alone	18.4%	18.2%

Population by Library-Defined Age Group, 2010



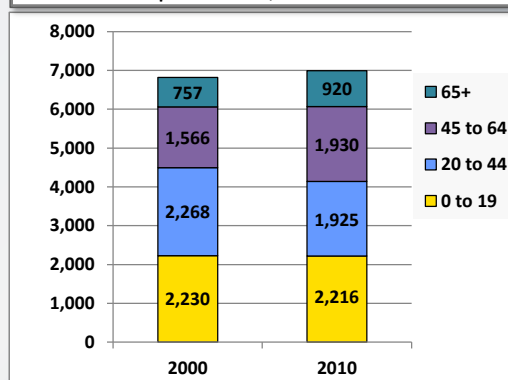
Race/Ethnicity by Library-Defined Age Group, 2010



Population Growth by Library-Defined Age Group, 2000 to 2010

Age Group	2010	Change	
		Numeric	Percent
Total	6,991	170	2.5%
85+	82	16	24.2%
65 to 84	838	147	21.3%
46 to 64	1,816	358	24.6%
33 to 45	1,048	-310	-22.8%
19 to 32	1,070	-25	-2.3%
14 to 18	582	28	5.1%
11 to 13	335	-4	-1.2%
6 to 10	596	-11	-1.8%
0 to 5	624	-29	-4.4%

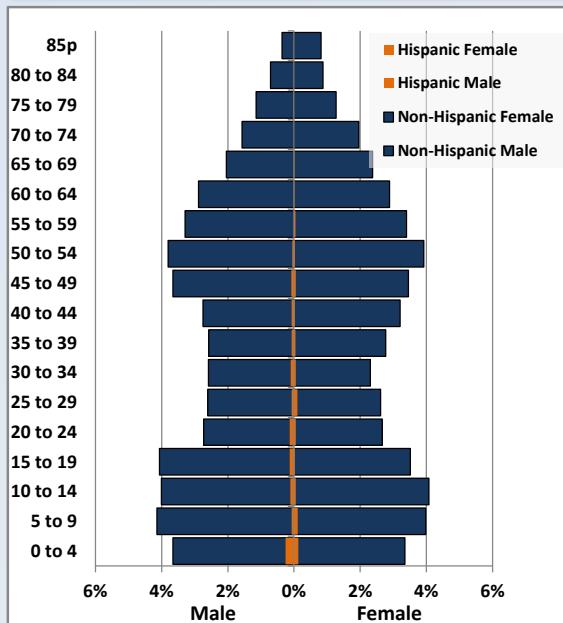
Population Total, 2000 and 2010



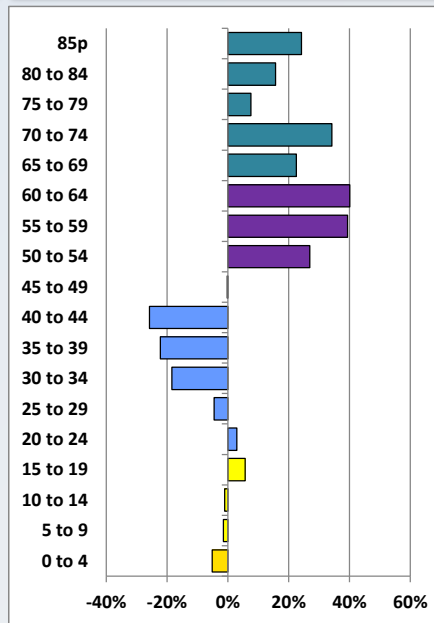
# Demographic Profile

Strasburg-Heisler Library

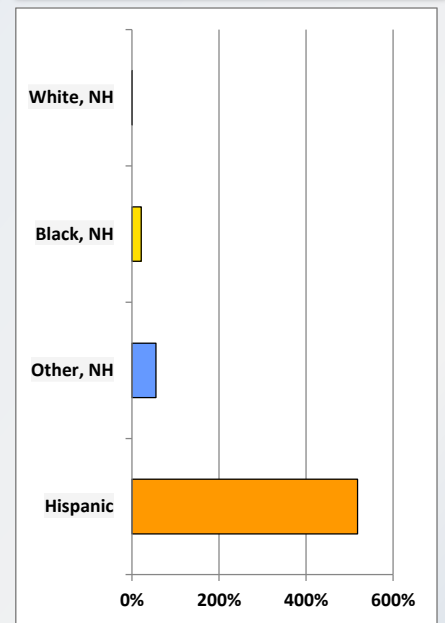
Population by 5-Year Age Cohorts



Pop Change by Age, 2000 to 2010

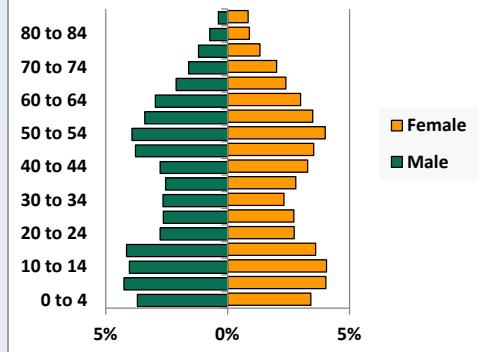


Pop Change by Race/Ethnicity, 2000 to 2010

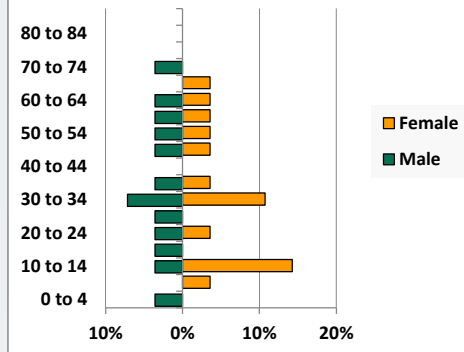


Population by Age, Race and Ethnicity 2010

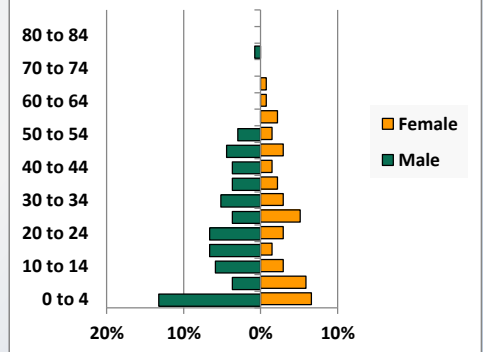
White, Not Hispanic



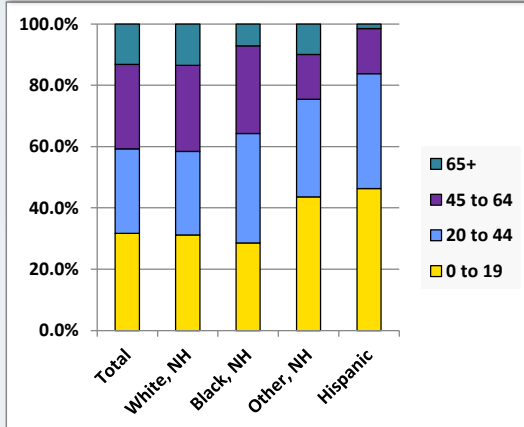
Black, Non-Hispanic



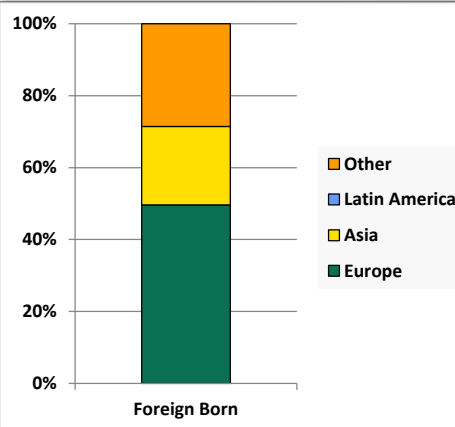
Hispanic



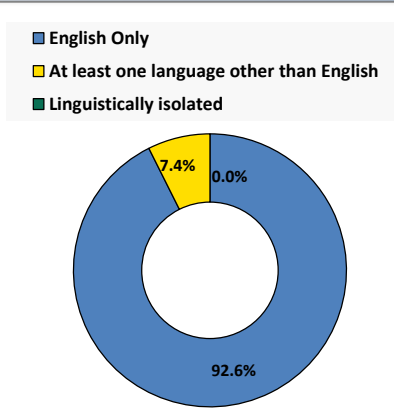
Age by Race and Ethnicity, 2010



Foreign Born, 2010



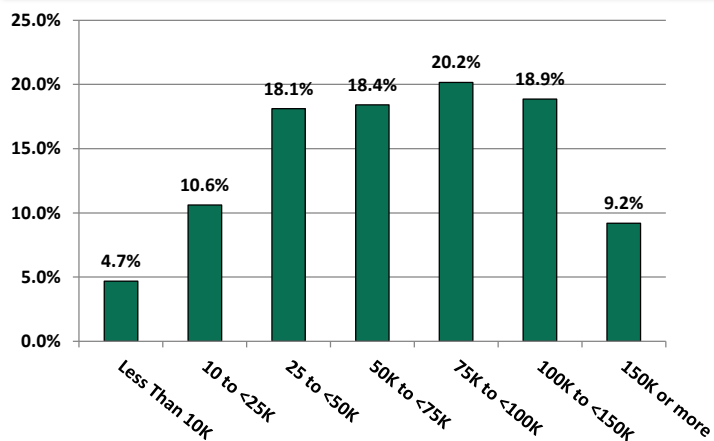
Household Language, 2010



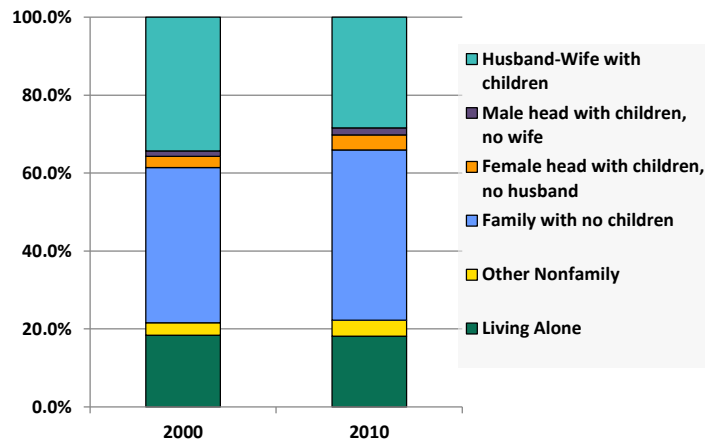
# Demographic Profile

Strasburg-Heisler Library

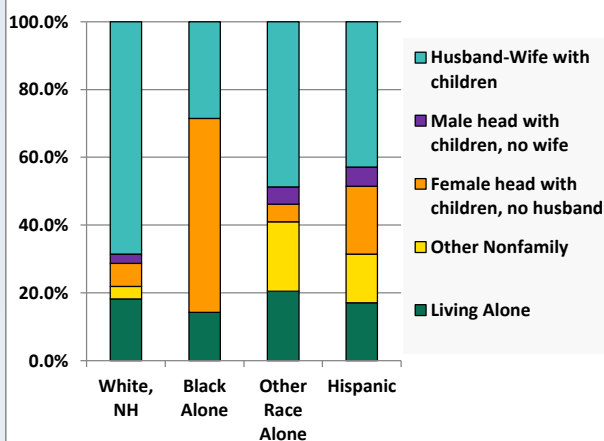
Household Income Distribution, 2008-2012



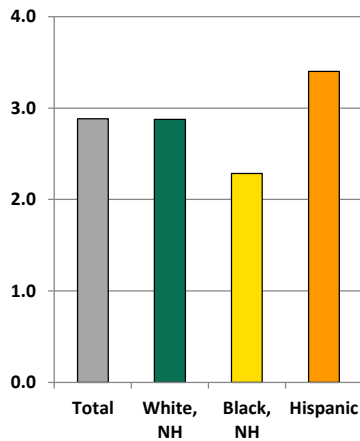
Household Type, 2000 and 2010



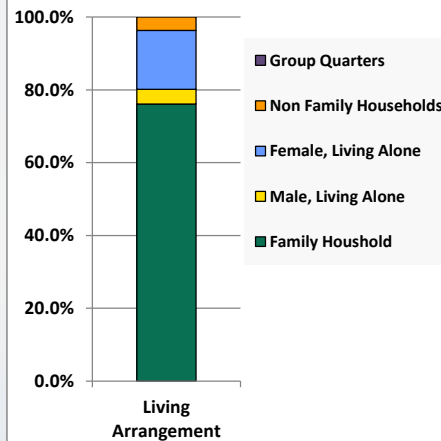
Household Type by Race/Ethnicity, 2010



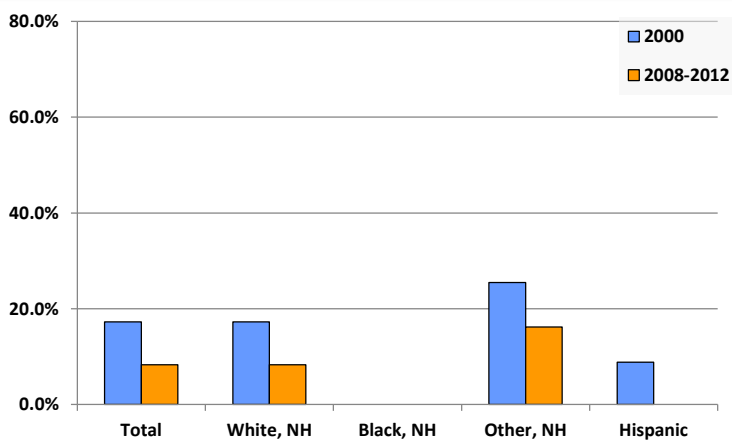
Average Household Size, 2010



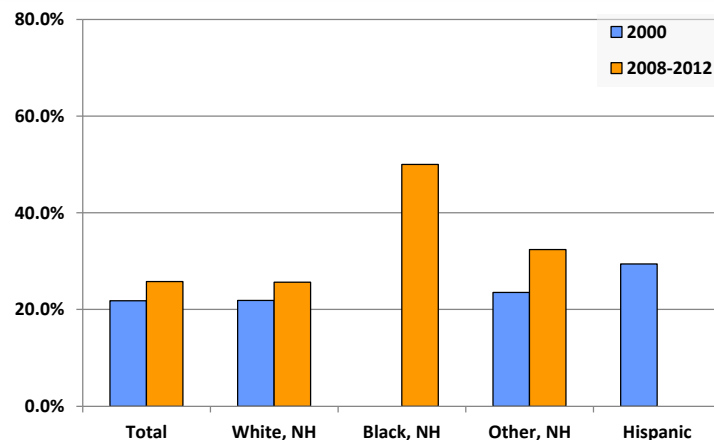
Living Arrangements 65+, 2008-2012



Percent of Adults that Did Not Complete High School



Percent of Adults Who Attained a Bachelor's Degree or Higher



# Reference Data

## Strasburg-Heisler Library

					Detail for Other, Non-Hispanic					
	Total Population	White, Non- Hispanic	Black, Non- Hispanic	Other, Non- Hispanic	AIAN	Asian	NHOPI	Some Other Race	Two or More Races	Hispanic or Latino
A. Total Population										
2000 Total	6,821	6,705	23	71	1	28	2	0	40	22
2000 pct of Total	100.0%	98.3%	0.3%	1.0%	0.0%	0.4%	0.0%	0.0%	0.6%	0.3%
2010 Total	6,991	6,717	28	110	0	43	1	2	64	136
2010 pct of Total	100.0%	96.1%	0.4%	1.6%	0.0%	0.6%	0.0%	0.0%	0.9%	1.9%
B. Population by Major Age Groups by Race and Ethnicity										
2000										
0-19	2,230	2,183	8	30	0	10	1	0	19	9
20-64	3,834	3,770	14	37	1	17	1	0	18	13
65+	757	752	1	4	0	1	0	0	3	0
85+	66	63	1	2	0	1	0	0	1	0
2010										
0-19	2,216	2,097	8	48	0	10	1	1	36	63
20-64	3,855	3,715	18	51	0	30	0	1	20	71
65+	920	905	2	11	0	3	0	0	8	2
85+	82	82	0	0	0	0	0	0	0	0
C. Age Mix for Each Racial and Ethnic Group										
2000										
0-19	32.7%	32.6%	34.8%	42.3%	0.0%	35.7%	50.0%	0.0%	47.5%	40.9%
20-64	56.2%	56.2%	60.9%	52.1%	100.0%	60.7%	50.0%	0.0%	45.0%	59.1%
65+	11.1%	11.2%	4.3%	5.6%	0.0%	3.6%	0.0%	0.0%	7.5%	0.0%
85+	1.0%	0.9%	4.3%	2.8%	0.0%	3.6%	0.0%	0.0%	2.5%	0.0%
2010										
0-19	31.7%	31.2%	28.6%	43.6%	0.0%	23.3%	100.0%	50.0%	56.3%	46.3%
20-64	55.1%	55.3%	64.3%	46.4%	0.0%	69.8%	0.0%	50.0%	31.3%	52.2%
65+	13.2%	13.5%	7.1%	10.0%	0.0%	7.0%	0.0%	0.0%	12.5%	1.5%
85+	1.2%	1.2%	0.0%	0.0%	0.0%	0.0%	0.0%	0.0%	0.0%	0.0%
D. Racial and Ethnic Composition of Each Age Group										
2000										
0-19	100.0%	97.9%	0.4%	1.3%	0.0%	0.4%	0.0%	0.0%	0.9%	0.4%
20-64	100.0%	98.3%	0.4%	1.0%	0.0%	0.4%	0.0%	0.0%	0.5%	0.3%
65+	100.0%	99.3%	0.1%	0.5%	0.0%	0.1%	0.0%	0.0%	0.4%	0.0%
85+	100.0%	95.5%	1.5%	3.0%	0.0%	1.5%	0.0%	0.0%	1.5%	0.0%
2010										
0-19	100.0%	94.6%	0.4%	2.2%	0.0%	0.5%	0.0%	0.0%	1.6%	2.8%
20-64	100.0%	96.4%	0.5%	1.3%	0.0%	0.8%	0.0%	0.0%	0.5%	1.8%
65+	100.0%	98.4%	0.2%	1.2%	0.0%	0.3%	0.0%	0.0%	0.9%	0.2%
85+	100.0%	100.0%	0.0%	0.0%	0.0%	0.0%	0.0%	0.0%	0.0%	0.0%
E. Population Growth										
2000-2010, Change										
0-19	-14	-86	0	18	0	0	0	1	17	54
20-64	21	-55	4	14	-1	13	-1	1	2	58
65+	163	153	1	7	0	2	0	0	5	2
85+	16	19	-1	-2	0	-1	0	0	-1	0
Total	170	12	5	39	-1	15	-1	2	24	114
2000-2010, Pct Change										
0-19	-0.6%	-3.9%	0.0%	60.0%	0.0%	0.0%	0.0%	0.0%	89.5%	600.0%
20-64	0.5%	-1.5%	28.6%	37.8%	-100.0%	76.5%	-100.0%	0.0%	11.1%	446.2%
65+	21.5%	20.3%	100.0%	175.0%	0.0%	200.0%	0.0%	0.0%	166.7%	0.0%
85+	24.2%	30.2%	-100.0%	-100.0%	0.0%	-100.0%	0.0%	0.0%	-100.0%	0.0%
Total	2.5%	0.2%	21.7%	54.9%	-100.0%	53.6%	-50.0%	0.0%	60.0%	518.2%

Source: Decennial Census 2010, 2000, American Community Survey 2008-2012

Prepared for the Pennsylvania State Library by The Pennsylvania State Data Center, 9/2014

# Reference Data

## Strasburg-Heisler Library

	Total Population	White, Non- Hispanic	Black, Non- Hispanic	Other, Non- Hispanic	Detail for Other, Non-Hispanic					Hispanic or Latino
					AIAN	Asian	NHOPI	Some Other	Two or More	
								Race	Races	
F. Population by Library-Defined Age Groups, 2010										
0-5	624	577	1	15	0	3	0	0	12	31
6-10	596	572	1	9	0	2	0	0	7	14
11-13	335	314	3	13	0	3	1	0	9	5
14-18	582	557	3	10	0	2	0	1	7	12
19-32	1,070	1,018	7	14	0	6	0	0	8	31
33-45	1,048	1,000	3	22	0	17	0	1	4	23
46-64	1,816	1,774	8	16	0	7	0	0	9	18
65-84	838	823	2	11	0	3	0	0	8	2
85+	82	82	0	0	0	0	0	0	0	0
Total	6,991	6,717	28	110	0	43	1	2	64	136
G. Population by 5-Year Age Cohorts, 2010										
0-4	517	477	1	12	0	1	0	0	11	27
5-9	581	556	1	11	0	4	0	0	7	13
10-14	577	543	5	17	0	4	1	0	12	12
15-19	541	521	1	8	0	1	0	1	6	11
20-24	390	370	2	5	0	2	0	0	3	13
25-29	377	360	1	4	0	0	0	0	4	12
30-34	353	333	5	4	0	4	0	0	0	11
35-39	382	359	2	13	0	9	0	1	3	8
40-44	423	407	0	9	0	8	0	0	1	7
45-49	508	491	2	5	0	2	0	0	3	10
50-54	546	532	2	6	0	1	0	0	5	6
55-59	471	463	2	3	0	3	0	0	0	3
60-64	405	400	2	2	0	1	0	0	1	1
65-69	310	303	1	5	0	3	0	0	2	1
70-74	247	242	1	4	0	0	0	0	4	0
75-79	170	169	0	0	0	0	0	0	0	1
80-84	111	109	0	2	0	0	0	0	2	0
85-89	63	63	0	0	0	0	0	0	0	0
90-94	16	16	0	0	0	0	0	0	0	0
95-99	2	2	0	0	0	0	0	0	0	0
100+	1	1	0	0	0	0	0	0	0	0
Total	6,991	6,717	28	110	0	43	1	2	64	136

Source: Decennial Census 2010, 2000, American Community Survey 2008-2012

Prepared for the Pennsylvania State Library by The Pennsylvania State Data Center, 9/2014

# Reference Data

Strasburg-Heisler Library

## H. Income Distribution, 2008-2012

Range (in thousands)	Households	Pct of Total
<\$10K	112	4.7%
\$10K to <\$25K	254	10.6%
\$25K to <\$50K	434	18.1%
\$50K to <\$75K	441	18.4%
\$75K to <\$100K	483	20.2%
\$100K to <\$150K	452	18.9%
\$150K+	220	9.2%

## I. Household Type, 2010

Household Type	2000	2000pct	2010	2010pct
Total Households	2,385	100.0%	2,425	100.0%
Family Households	1,869	78.4%	1,886	77.8%
Husband-wife, no children w/children	818	34.3%	688	28.4%
Female head, no husband, w/ children	68	2.9%	94	3.9%
Male head, no wife, w/ children	34	1.4%	44	1.8%
Without children	949	39.8%	1,060	43.7%
Nonfamily households	516	21.6%	539	22.2%
Living alone	439	18.4%	441	18.2%
Other nonfamily	77	3.2%	98	4.0%

## J. Household Type by Race and Ethnicity, 2008-2012

Household Type	White, NH	Black, NH	Other, NH	Hispanic
Total Households	2,357	7	39	35
Husband wife family	68.5%	28.6%	48.7%	42.9%
Family with male head, no wife	2.8%	0.0%	5.1%	5.7%
family with female head, no husband	6.7%	57.1%	5.1%	20.0%
Living alone	18.2%	14.3%	20.5%	17.1%
Other nonfamily	3.7%	0.0%	20.5%	14.3%

## K. Poverty, 2008-2012

Families	Poverty	PA
All families	7.4%	9.1%
Families w/ related children	11.3%	15.3%
Female householder, no husband present	33.6%	28.8%
Female householder, no husband present, w/ related children	41.5%	39.2%
All people	9.2%	13.1%
Under 18 years	14.5%	18.4%
18 to 64 years	6.6%	12.3%
65 years and over	11.4%	8.4%

## L. Educational Attainment by Race and Ethnicity, 2008-2012

Education Level	White, NH	Black	Other	Hispanic	Total
Population 25 years and over	4,230	28	37	15	4,310
Less than high school	8.3%	0.0%	16%	0.0%	8.3%
High school graduate (includes equivalency	42.2%	0.0%	30%	100.0%	42.0%
Some college or associates degree	23.8%	50.0%	22%	0.0%	23.9%
Bachelors degree or higher	25.7%	50.0%	32%	0.0%	25.8%

## M. Occupation, 2008-2012

Occupation	Estimate	Percent
Civilian population age 16 years and over	3,817	100.0%
Management, professional, and related occupations	1,126	29.5%
Service occupations	699	18.3%
Sales and office occupations	957	25.1%
Farming, fishing, and forestry occupations	87	2.3%
Construction, extraction, maintenance, and repair occupations	452	11.8%
Production, transportation, and material moving occupations	496	13.0%

## N. Class of Worker, 2008-2012

Occupation	Estimate	Percent
Civilian population age 16 years and over	3,817	100.0%
Private, for profit, wage and salary employee	2,816	73.8%
Private, not for profit, wage and salary employee	318	8.3%
Private, for profit, wage and salary self-employed in own business	74	1.9%
Government workers	325	8.5%
Self-employed in own not incorporated business	279	7.3%
Unpaid family workers in family business	5	0.1%