

Demographic Profile Sugar Grove Free Library

Population Growth: The total population of the Sugar Grove Free Library service area decreased by -3.0 percent over the past decade to 5,270; this decline rate was lower than the statewide rate of 3.4 percent.

Age and Sex: In 2010, the Sugar Grove Free Library service area had a total population of 5,270 - 2,709 males (51.4 percent) and 2,561 females (48.6 percent). The age structure of the population in 2010 was as follows: 29.9 percent of the population was under 20 years old, 56.2 percent was 20 to 64 years old and 13.9 percent was 65 years or older.

Race and Ethnicity: For people reporting one race alone, not of Hispanic ethnicity, 97.7 percent were White; .2 percent were Black or African American; 1.4 percent were Other Race Alone.¹ A total of 38 or .7 percent of the population were Hispanic.²

Households: In 2010, there were 1,950 households in the Sugar Grove Free Library service area. The average household size was 2.70 people. Families made up 71.8 percent of the households. This figure includes both families with (28.2 percent) and without (43.6 percent) children. Of families with children less than 18 years old, 21.7 percent were married-couple families, 3.5 percent were female householder families with no husband present, and the remaining (3.0 percent) were male-headed households with no wife present.

Education: The educational attainment of the population 25 years and over was lower in the Sugar Grove Free Library service area than in Pennsylvania. During the period 2008-2012, 9.4 percent of residents had earned a Bachelor's degree or higher, compared with 27.0 percent statewide. A total of 424 or 12.7 percent had not completed high school, compared with 11.7 percent for the commonwealth as a whole.

Income and Poverty: Households with incomes of \$25,000 to \$49,999 (33.7 percent) made up the largest percent of households in the Sugar Grove Free Library service area in 2008-2012. For comparison, 24.4 percent of commonwealth households were in this range during the period.

In 2008-2012, the overall poverty rate for the Sugar Grove Free Library service area was lower than Pennsylvania (11.6 percent compared to 13.1 percent). The poverty rate for the population under 18 years of age was 22.6 percent, compared with 8.6 percent of people 18 to 64 years and 7.2 percent for those aged 65 years and over. A total of 102 or 7.6 percent of all families had incomes below poverty level. In 2008-2012, 16.1 percent of families with related children and 53.4 percent of families with a female householder and no husband with related children present had incomes below the poverty level.

Class of Worker and Occupation: In 2008-2012, 82.3 percent of the workforce was private wage and salary workers; 7.7 percent were federal, state, or local government workers; and 9.6 percent were self-employed in their own (not incorporated) business.

The top occupation group for the civilian employed population 16 years and over in the Sugar Grove Free Library service area in 2008-2012 was Production (23.3 percent).

¹ Other race includes those who identified themselves as American Indian/Alaska Native, Asian, Native Hawaiian/Other Pacific Islander, Some Other Race and Two or More Races on the 2010 Census form.

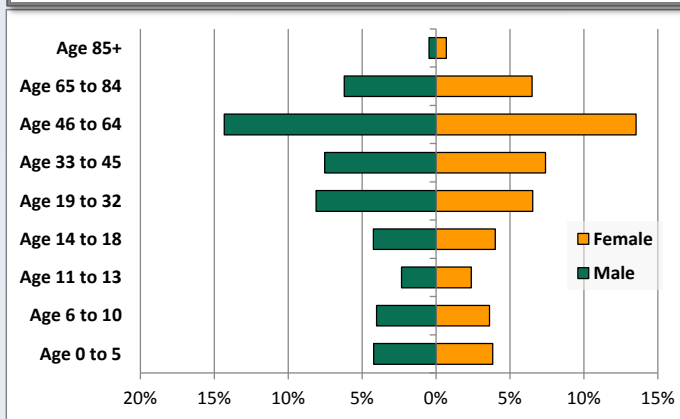
² People of Hispanic origin may be of any race.

Demographic Profile

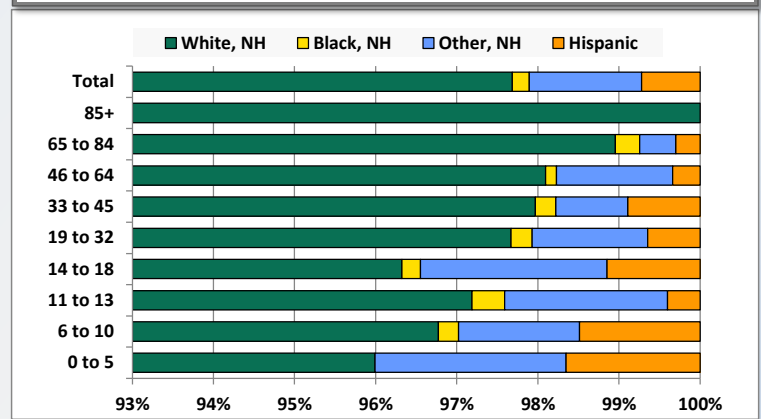
Sugar Grove Free Library

Key Indicators		
	2000	2010
Population Growth		
Total Population	5,431	5,270
10-Year Growth	N/A	-3.0%
Diversity		
White Alone, Non-Hispanic	98.6%	97.7%
Black Alone, Non-Hispanic	0.3%	0.2%
Other Race Alone, Non-Hispanic	0.8%	1.4%
Percent Hispanic	0.2%	0.7%
Aging		
Percent 65 Years and Over	11.3%	13.9%
Households		
Percent Married Couple with Own Children	30.1%	21.7%
Percent Living Alone	18.1%	22.7%

Population by Library-Defined Age Group, 2010



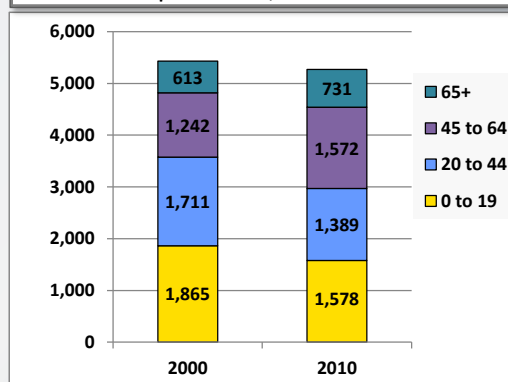
Race/Ethnicity by Library-Defined Age Group, 2010



Population Growth by Library-Defined Age Group, 2000 to 2010

Age Group	2010	Change	
		Numeric	Percent
Total	5,270	-161	-3.0%
85+	61	3	5.2%
65 to 84	670	115	20.7%
46 to 64	1,469	308	26.5%
33 to 45	787	-343	-30.4%
19 to 32	772	43	5.9%
14 to 18	435	-95	-17.9%
11 to 13	249	-48	-16.2%
6 to 10	403	-77	-16.0%
0 to 5	424	-67	-13.6%

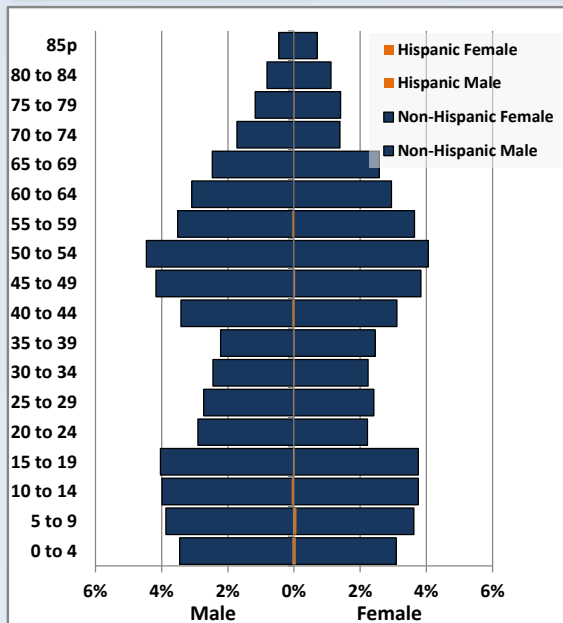
Population Total, 2000 and 2010



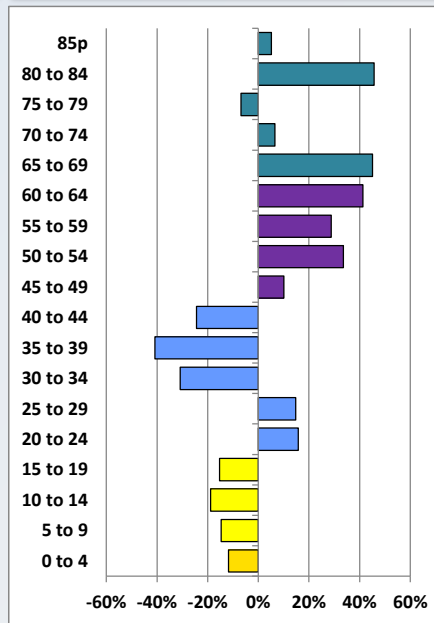
Demographic Profile

Sugar Grove Free Library

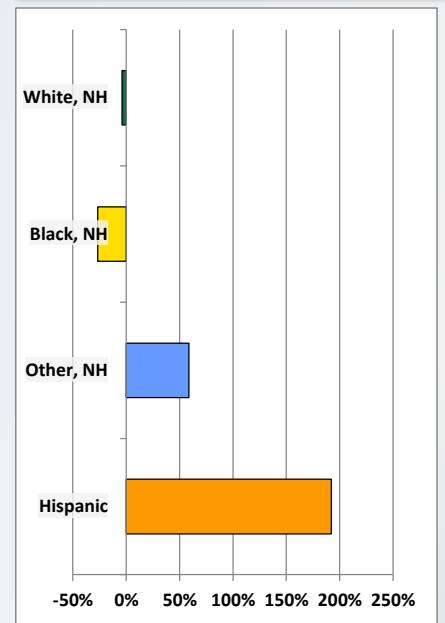
Population by 5-Year Age Cohorts



Pop Change by Age, 2000 to 2010

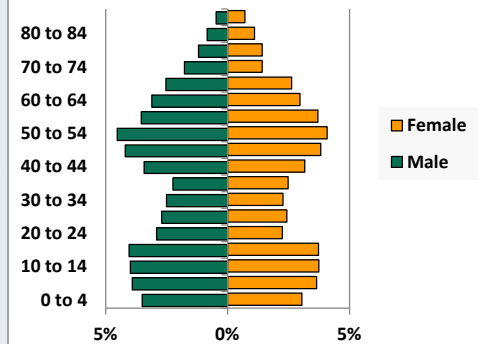


Pop Change by Race/Ethnicity, 2000 to 2010

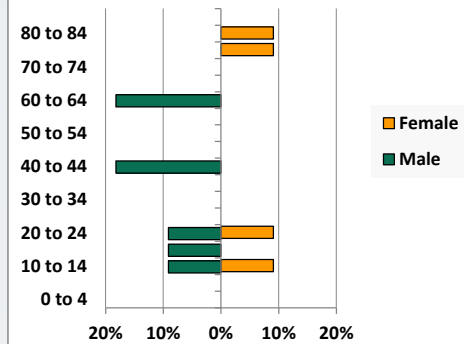


Population by Age, Race and Ethnicity 2010

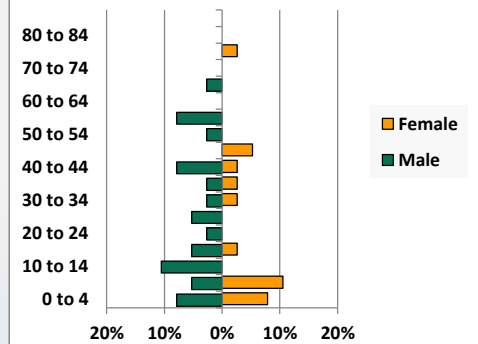
White, Not Hispanic



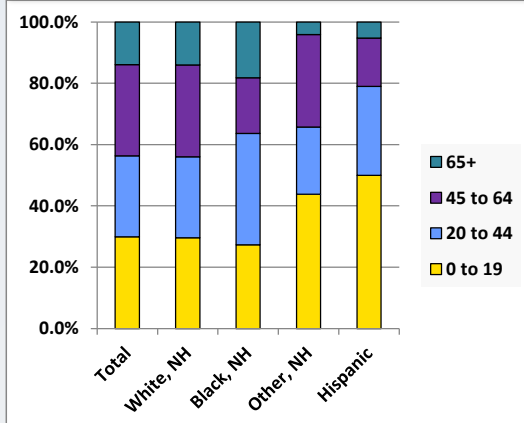
Black, Non-Hispanic



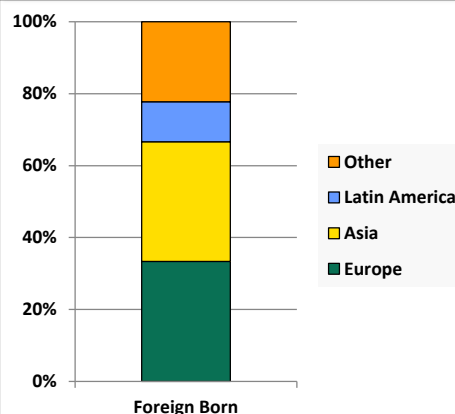
Hispanic



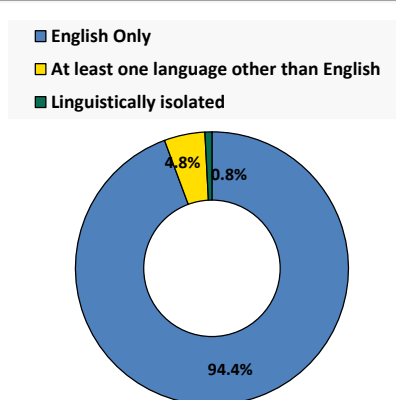
Age by Race and Ethnicity, 2010



Foreign Born, 2010



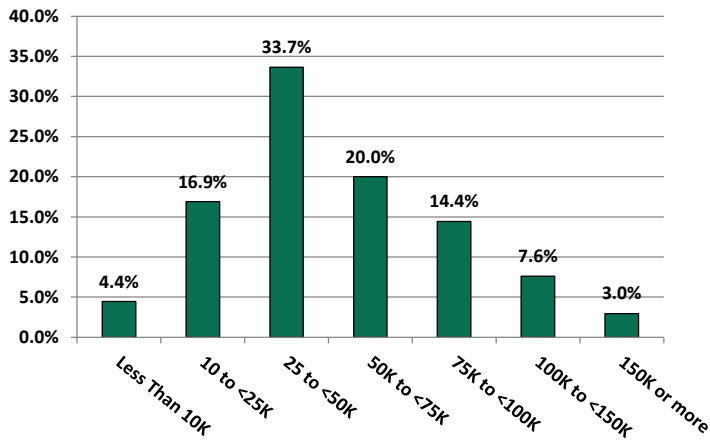
Household Language, 2010



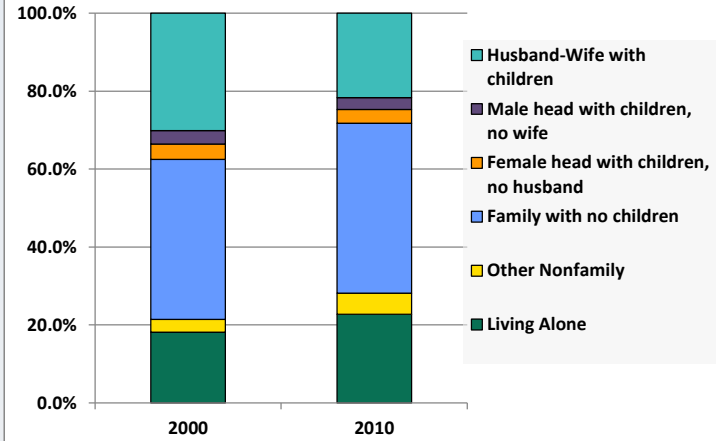
Demographic Profile

Sugar Grove Free Library

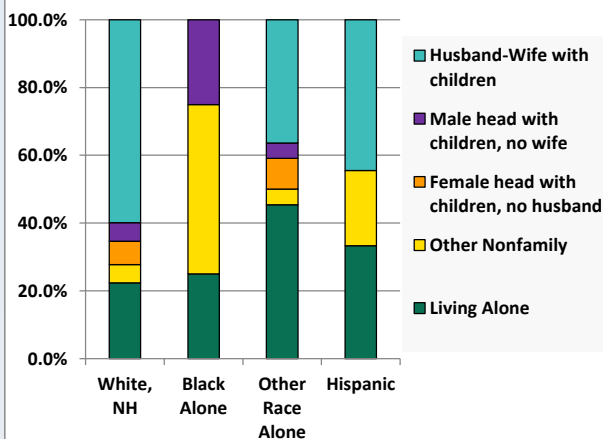
Household Income Distribution, 2008-2012



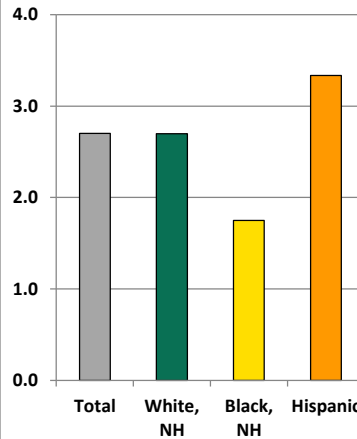
Household Type, 2000 and 2010



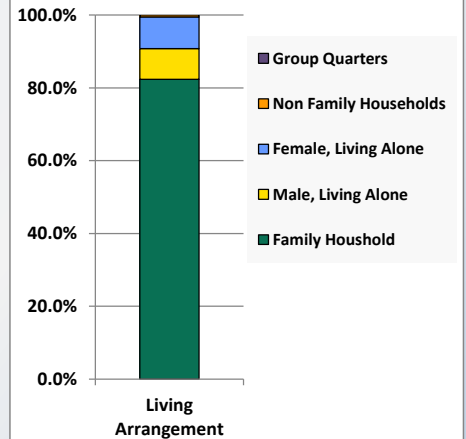
Household Type by Race/Ethnicity, 2010



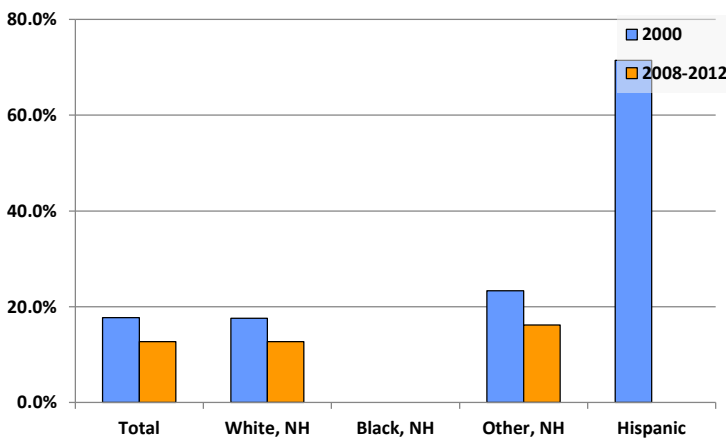
Average Household Size, 2010



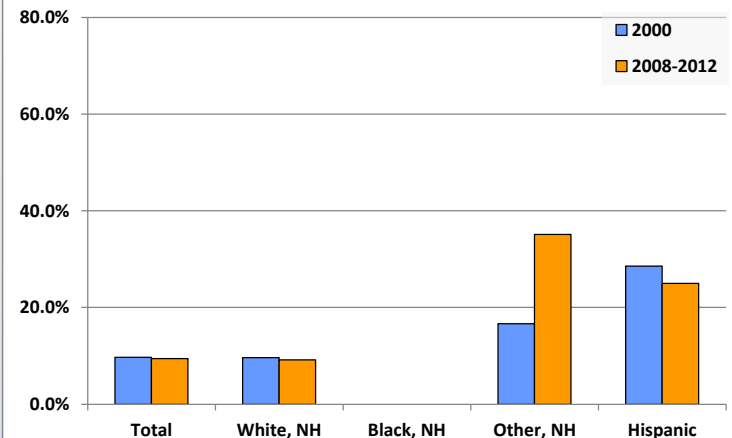
Living Arrangements 65+, 2008-2012



Percent of Adults that Did Not Complete High School



Percent of Adults Who Attained a Bachelor's Degree or Higher



Reference Data

Sugar Grove Free Library

	Total Population	White, Non- Hispanic	Black, Non- Hispanic	Other, Non- Hispanic	Detail for Other, Non-Hispanic					Hispanic or Latino
					AIAN	Asian	NHOPI	Some Other Race	Two or More Races	
A. Total Population										
2000 Total	5,431	5,357	15	46	10	7	0	1	28	13
2000 pct of Total	100.0%	98.6%	0.3%	0.8%	0.2%	0.1%	0.0%	0.0%	0.5%	0.2%
2010 Total	5,270	5,148	11	73	8	21	1	0	43	38
2010 pct of Total	100.0%	97.7%	0.2%	1.4%	0.2%	0.4%	0.0%	0.0%	0.8%	0.7%
B. Population by Major Age Groups by Race and Ethnicity										
2000										
0-19	1,865	1,830	8	22	2	2	0	1	17	5
20-64	2,953	2,919	5	22	8	5	0	0	9	7
65+	613	608	2	2	0	0	0	0	2	1
85+	58	58	0	0	0	0	0	0	0	0
2010										
0-19	1,578	1,524	3	32	0	7	0	0	25	19
20-64	2,961	2,900	6	38	7	14	1	0	16	17
65+	731	724	2	3	1	0	0	0	2	2
85+	61	61	0	0	0	0	0	0	0	0
C. Age Mix for Each Racial and Ethnic Group										
2000										
0-19	34.3%	34.2%	53.3%	47.8%	20.0%	28.6%	0.0%	100.0%	60.7%	38.5%
20-64	54.4%	54.5%	33.3%	47.8%	80.0%	71.4%	0.0%	0.0%	32.1%	53.8%
65+	11.3%	11.3%	13.3%	4.3%	0.0%	0.0%	0.0%	0.0%	7.1%	7.7%
85+	1.1%	1.1%	0.0%	0.0%	0.0%	0.0%	0.0%	0.0%	0.0%	0.0%
2010										
0-19	29.9%	29.6%	27.3%	43.8%	0.0%	33.3%	0.0%	0.0%	58.1%	50.0%
20-64	56.2%	56.3%	54.5%	52.1%	87.5%	66.7%	100.0%	0.0%	37.2%	44.7%
65+	13.9%	14.1%	18.2%	4.1%	12.5%	0.0%	0.0%	0.0%	4.7%	5.3%
85+	1.2%	1.2%	0.0%	0.0%	0.0%	0.0%	0.0%	0.0%	0.0%	0.0%
D. Racial and Ethnic Composition of Each Age Group										
2000										
0-19	100.0%	98.1%	0.4%	1.2%	0.1%	0.1%	0.0%	0.1%	0.9%	0.3%
20-64	100.0%	98.8%	0.2%	0.7%	0.3%	0.2%	0.0%	0.0%	0.3%	0.2%
65+	100.0%	99.2%	0.3%	0.3%	0.0%	0.0%	0.0%	0.0%	0.3%	0.2%
85+	100.0%	100.0%	0.0%	0.0%	0.0%	0.0%	0.0%	0.0%	0.0%	0.0%
2010										
0-19	100.0%	96.6%	0.2%	2.0%	0.0%	0.4%	0.0%	0.0%	1.6%	1.2%
20-64	100.0%	97.9%	0.2%	1.3%	0.2%	0.5%	0.0%	0.0%	0.5%	0.6%
65+	100.0%	99.0%	0.3%	0.4%	0.1%	0.0%	0.0%	0.0%	0.3%	0.3%
85+	100.0%	100.0%	0.0%	0.0%	0.0%	0.0%	0.0%	0.0%	0.0%	0.0%
E. Population Growth										
2000-2010, Change										
0-19	-287	-306	-5	10	-2	5	0	-1	8	14
20-64	8	-19	1	16	-1	9	1	0	7	10
65+	118	116	0	1	1	0	0	0	0	1
85+	3	3	0	0	0	0	0	0	0	0
Total	-161	-209	-4	27	-2	14	1	-1	15	25
2000-2010, Pct Change										
0-19	-15.4%	-16.7%	-62.5%	45.5%	-100.0%	250.0%	0.0%	-100.0%	47.1%	280.0%
20-64	0.3%	-0.7%	20.0%	72.7%	-12.5%	180.0%	0.0%	0.0%	77.8%	142.9%
65+	19.2%	19.1%	0.0%	50.0%	0.0%	0.0%	0.0%	0.0%	0.0%	100.0%
85+	5.2%	5.2%	0.0%	0.0%	0.0%	0.0%	0.0%	0.0%	0.0%	0.0%
Total	-3.0%	-3.9%	-26.7%	58.7%	-20.0%	200.0%	0.0%	-100.0%	53.6%	192.3%

Source: Decennial Census 2010, 2000, American Community Survey 2008-2012

Prepared for the Pennsylvania State Library by The Pennsylvania State Data Center, 9/2014

Reference Data

Sugar Grove Free Library

	Total Population	White, Non- Hispanic	Black, Non- Hispanic	Other, Non- Hispanic	Detail for Other, Non-Hispanic					Hispanic or Latino
					AIAN	Asian	NHOPI	Some Other Race	Two or More Races	
F. Population by Library-Defined Age Groups, 2010										
0-5	424	407	0	10	0	2	0	0	8	7
6-10	403	390	1	6	0	2	0	0	4	6
11-13	249	242	1	5	0	1	0	0	4	1
14-18	435	419	1	10	0	2	0	0	8	5
19-32	772	754	2	11	2	4	0	0	5	5
33-45	787	771	2	7	1	2	0	0	4	7
46-64	1,469	1,441	2	21	4	8	1	0	8	5
65-84	670	663	2	3	1	0	0	0	2	2
85+	61	61	0	0	0	0	0	0	0	0
Total	5,270	5,148	11	73	8	21	1	0	43	38
G. Population by 5-Year Age Cohorts, 2010										
0-4	351	337	0	8	0	2	0	0	6	6
5-9	401	389	0	6	0	1	0	0	5	6
10-14	412	398	2	8	0	3	0	0	5	4
15-19	414	400	1	10	0	1	0	0	9	3
20-24	271	266	2	2	1	0	0	0	1	1
25-29	273	264	0	7	1	3	0	0	3	2
30-34	249	246	0	1	0	1	0	0	0	2
35-39	248	243	0	3	0	2	0	0	1	2
40-44	348	339	2	3	1	0	0	0	2	4
45-49	424	413	0	9	0	4	1	0	4	2
50-54	450	443	0	6	2	1	0	0	3	1
55-59	380	373	0	4	1	1	0	0	2	3
60-64	318	313	2	3	1	2	0	0	0	0
65-69	267	265	0	1	1	0	0	0	0	1
70-74	164	164	0	0	0	0	0	0	0	0
75-79	137	134	1	1	0	0	0	0	1	1
80-84	102	100	1	1	0	0	0	0	1	0
85-89	44	44	0	0	0	0	0	0	0	0
90-94	15	15	0	0	0	0	0	0	0	0
95-99	2	2	0	0	0	0	0	0	0	0
100+	0	0	0	0	0	0	0	0	0	0
Total	5,270	5,148	11	73	8	21	1	0	43	38

Source: Decennial Census 2010, 2000, American Community Survey 2008-2012
 Prepared for the Pennsylvania State Library by The Pennsylvania State Data Center, 9/2014

H. Income Distribution, 2008-2012

Range (in thousands)	Households	Pct of Total
<\$10K	81	4.4%
\$10K to <\$25K	308	16.9%
\$25K to <\$50K	614	33.7%
\$50K to <\$75K	365	20.0%
\$75K to <\$100K	263	14.4%
\$100K to <\$150K	139	7.6%
\$150K+	54	3.0%

I. Household Type, 2010

Household Type	2000	2000pct	2010	2010pct
Total Households	1,888	100.0%	1,950	100.0%
Family Households	1,483	78.5%	1,400	71.8%
Husband-wife, no children w/children	568	30.1%	423	21.7%
Female head, no husband, w/ children	75	4.0%	68	3.5%
Male head, no wife, w/ children	66	3.5%	59	3.0%
Without children	774	41.0%	850	43.6%
Nonfamily households	405	21.5%	550	28.2%
Living alone	342	18.1%	443	22.7%
Other nonfamily	63	3.3%	107	5.5%

J. Household Type by Race and Ethnicity, 2008-2012

Household Type	White, NH	Black, NH	Other, NH	Hispanic
Total Households	1,917	4	22	9
Husband wife family	59.9%	0.0%	36.4%	44.4%
Family with male head, no wife	5.5%	25.0%	4.5%	0.0%
family with female head, no husband	6.9%	0.0%	9.1%	0.0%
Living alone	22.4%	25.0%	45.5%	33.3%
Other nonfamily	5.4%	50.0%	4.5%	22.2%

K. Poverty, 2008-2012

Families	Poverty	PA
All families	7.6%	9.1%
Families w/ related children	16.1%	15.3%
Female householder, no husband present	36.7%	28.8%
Female householder, no husband present, w/ related children	53.4%	39.2%
All people	11.6%	13.1%
Under 18 years	22.6%	18.4%
18 to 64 years	8.6%	12.3%
65 years and over	7.2%	8.4%

L. Educational Attainment by Race and Ethnicity, 2008-2012

Education Level	White, NH	Black	Other	Hispanic	Total
Population 25 years and over	3,280	0	37	16	3,329
Less than high school	12.7%	0.0%	16%	0.0%	12.7%
High school graduate (includes equivalency)	50.6%	0.0%	16%	75.0%	50.4%
Some college or associates degree	27.5%	0.0%	32%	0.0%	27.5%
Bachelors degree or higher	9.2%	0.0%	35%	25.0%	9.4%

M. Occupation, 2008-2012

Occupation	Estimate	Percent
Civilian population age 16 years and over	2,178	100.0%
Management, professional, and related occupations	469	21.5%
Service occupations	329	15.1%
Sales and office occupations	488	22.4%
Farming, fishing, and forestry occupations	55	2.5%
Construction, extraction, maintenance, and repair occupations	329	15.1%
Production, transportation, and material moving occupations	508	23.3%

N. Class of Worker, 2008-2012

Occupation	Estimate	Percent
Civilian population age 16 years and over	2,178	100.0%
Private, for profit, wage and salary employee	1,513	69.5%
Private, not for profit, wage and salary employee	229	10.5%
Private, for profit, wage and salary self-employed in own business	50	2.3%
Government workers	168	7.7%
Self-employed in own not incorporated business	208	9.6%
Unpaid family workers in family business	10	0.5%