

## Demographic Profile Swarthmore Public Library

**Population Growth:** The total population of the Swarthmore Public Library service area increased by .4 percent over the past decade to 6,194; this growth rate was lower than the statewide rate of 3.4 percent.

**Age and Sex:** In 2010, the Swarthmore Public Library service area had a total population of 6,194 - 2,926 males (47.2 percent) and 3,268 females (52.8 percent). The age structure of the population in 2010 was as follows: 31.1 percent of the population was under 20 years old, 56.5 percent was 20 to 64 years old and 12.4 percent was 65 years or older.

**Race and Ethnicity:** For people reporting one race alone, not of Hispanic ethnicity, 79.0 percent were White; 4.7 percent were Black or African American; 11.3 percent were Other Race Alone.<sup>1</sup> A total of 305 or 4.9 percent of the population were Hispanic.<sup>2</sup>

**Households:** In 2010, there were 1,963 households in the Swarthmore Public Library service area. The average household size was 2.48 people. Families made up 67.6 percent of the households. This figure includes both families with (34.1 percent) and without (33.5 percent) children. Of families with children less than 18 years old, 28.4 percent were married-couple families, 4.4 percent were female householder families with no husband present, and the remaining (1.3 percent) were male-headed households with no wife present.

**Education:** The educational attainment of the population 25 years and over was higher in the Swarthmore Public Library service area than in Pennsylvania. During the period 2008-2012, 80.4 percent of residents had earned a Bachelor's degree or higher, compared with 27.0 percent statewide. A total of 53 or 1.6 percent had not completed high school, compared with 11.7 percent for the commonwealth as a whole.

**Income and Poverty:** Households with incomes of \$100,000 or More (55.3 percent) made up the largest percent of households in the Swarthmore Public Library service area in 2008-2012. For comparison, 20.8 percent of commonwealth households were in this range during the period.

In 2008-2012, the overall poverty rate for the Swarthmore Public Library service area was lower than Pennsylvania (5.3 percent compared to 13.1 percent). The poverty rate for the population under 18 years of age was 3.6 percent, compared with 7.0 percent of people 18 to 64 years and 1.6 percent for those aged 65 years and over. A total of 41 or 3.0 percent of all families had incomes below poverty level. In 2008-2012, 6.7 percent of families with related children and 63.1 percent of families with a female householder and no husband with related children present had incomes below the poverty level.

**Class of Worker and Occupation:** In 2008-2012, 81.9 percent of the workforce was private wage and salary workers; 11.1 percent were federal, state, or local government workers; and 7.0 percent were self-employed in their own (not incorporated) business.

The top occupation group for the civilian employed population 16 years and over in the Swarthmore Public Library service area in 2008-2012 was Management, business, science, and arts (69.7 percent).

---

<sup>1</sup> Other race includes those who identified themselves as American Indian/Alaska Native, Asian, Native Hawaiian/Other Pacific Islander, Some Other Race and Two or More Races on the 2010 Census form.

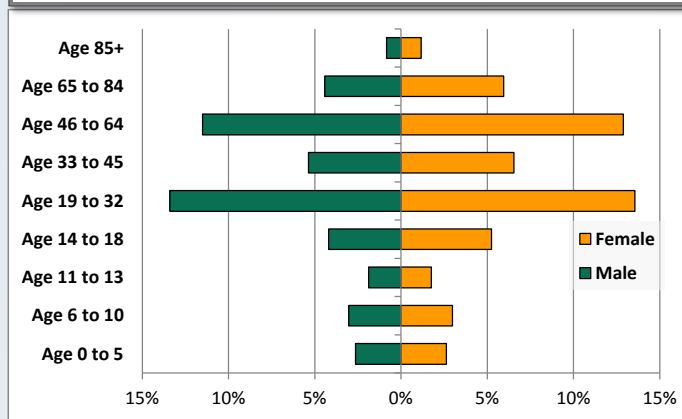
<sup>2</sup> People of Hispanic origin may be of any race.

# Demographic Profile

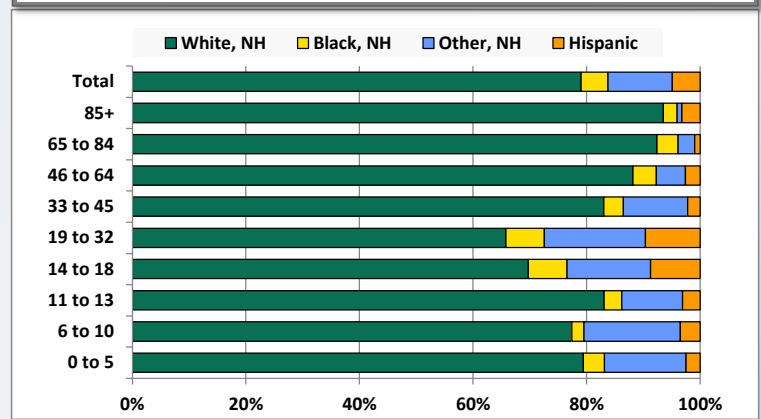
Swarthmore Public Library

Key Indicators		
	2000	2010
<b>Population Growth</b>		
Total Population	6,170	6,194
10-Year Growth	N/A	0.4%
<b>Diversity</b>		
White Alone, Non-Hispanic	83.8%	79.0%
Black Alone, Non-Hispanic	4.7%	4.7%
Other Race Alone, Non-Hispanic	8.1%	11.3%
Percent Hispanic	3.4%	4.9%
<b>Aging</b>		
Percent 65 Years and Over	13.8%	12.4%
<b>Households</b>		
Percent Married Couple with Own Children	28.5%	28.4%
Percent Living Alone	27.5%	27.6%

Population by Library-Defined Age Group, 2010



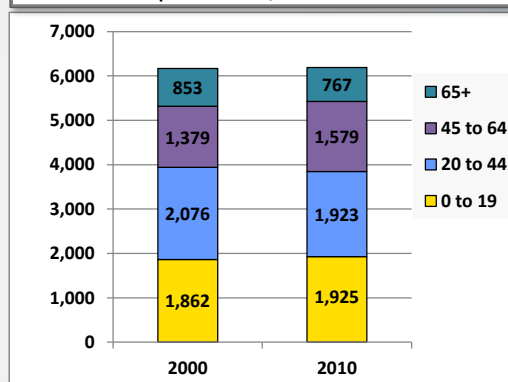
Race/Ethnicity by Library-Defined Age Group, 2010



Population Growth by Library-Defined Age Group, 2000 to 2010

Age Group	2010	Change	
		Numeric	Percent
Total	6,194	24	0.4%
85+	124	40	47.6%
65 to 84	643	-126	-16.4%
46 to 64	1,511	222	17.2%
33 to 45	738	-225	-23.4%
19 to 32	1,670	139	9.1%
14 to 18	585	14	2.5%
11 to 13	225	-28	-11.1%
6 to 10	372	-16	-4.1%
0 to 5	326	4	1.2%

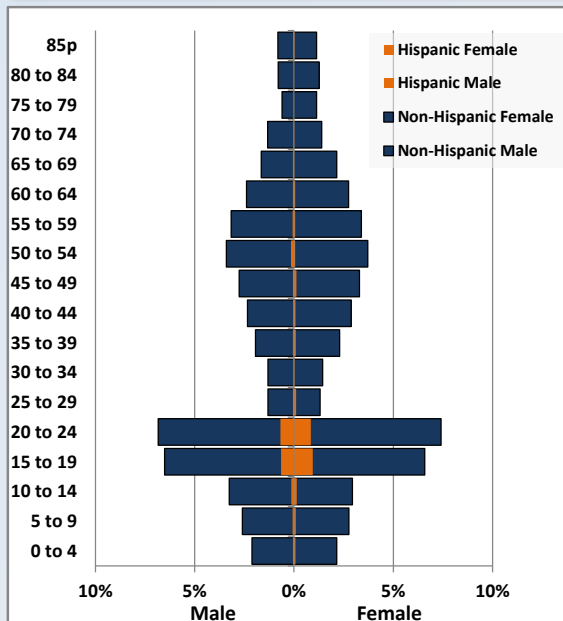
Population Total, 2000 and 2010



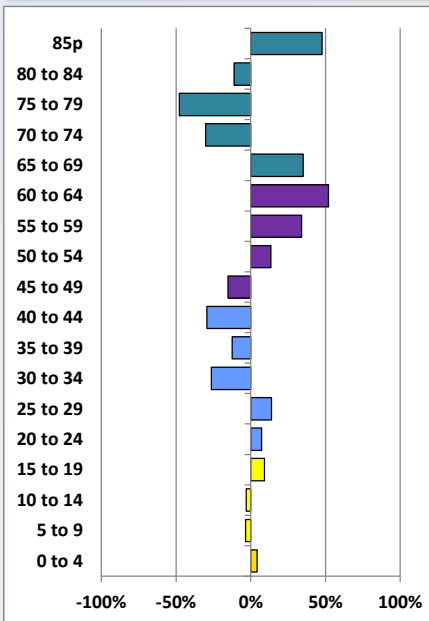
# Demographic Profile

Swarthmore Public Library

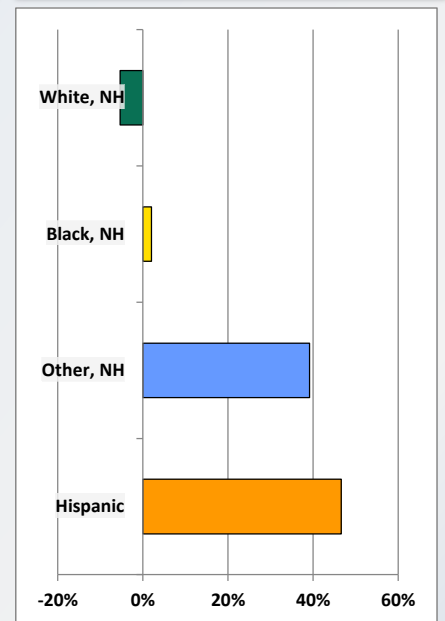
Population by 5-Year Age Cohorts



Pop Change by Age, 2000 to 2010

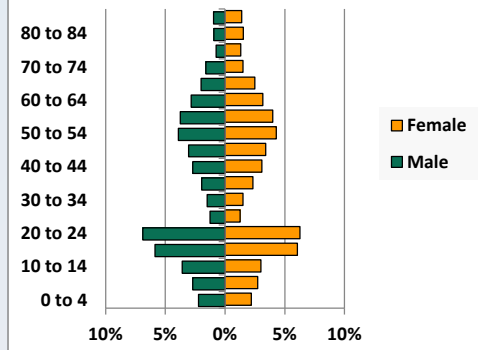


Pop Change by Race/Ethnicity, 2000 to 2010

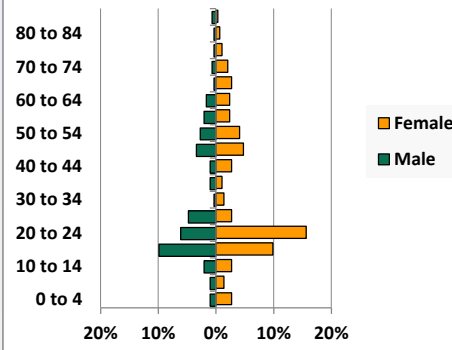


Population by Age, Race and Ethnicity 2010

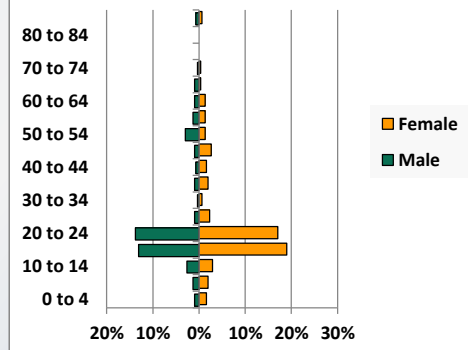
White, Not Hispanic



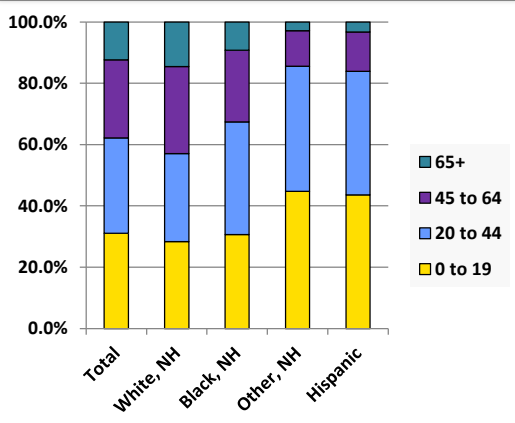
Black, Non-Hispanic



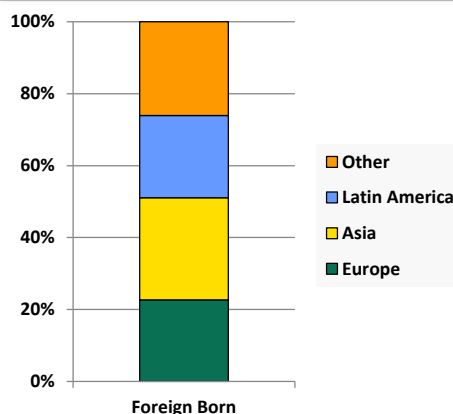
Hispanic



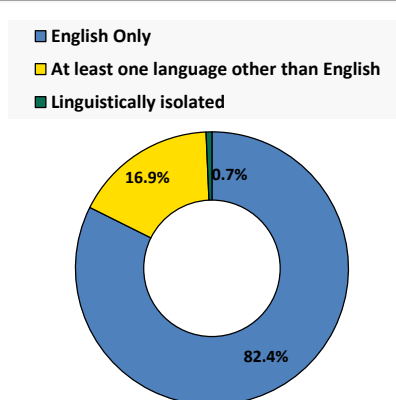
Age by Race and Ethnicity, 2010



Foreign Born, 2010



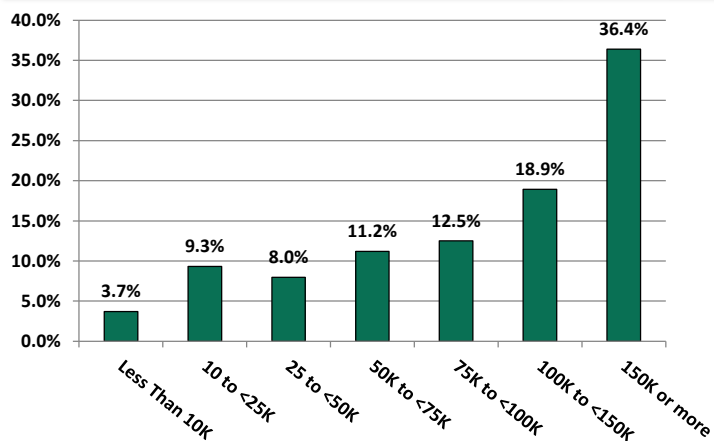
Household Language, 2010



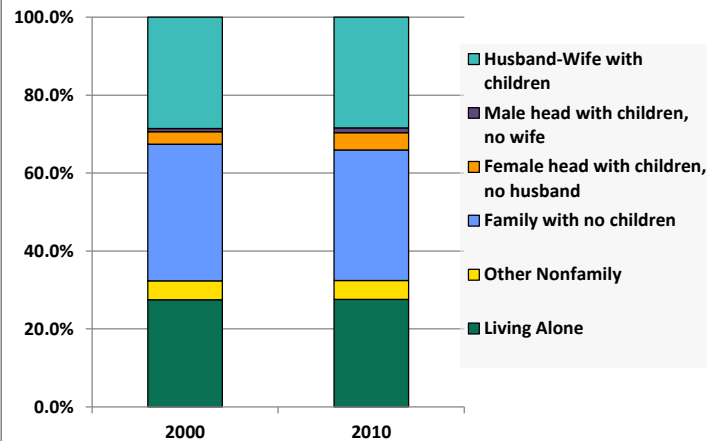
# Demographic Profile

Swarthmore Public Library

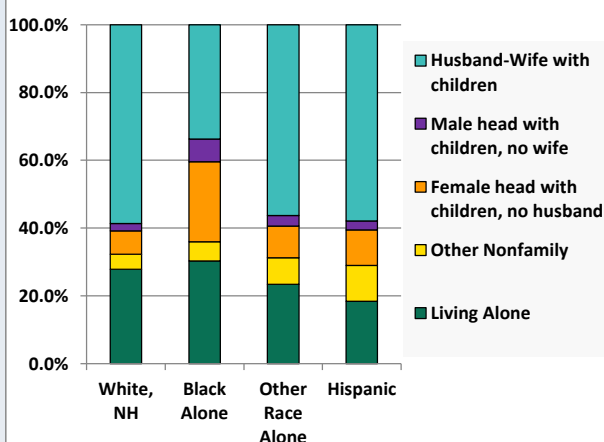
Household Income Distribution, 2008-2012



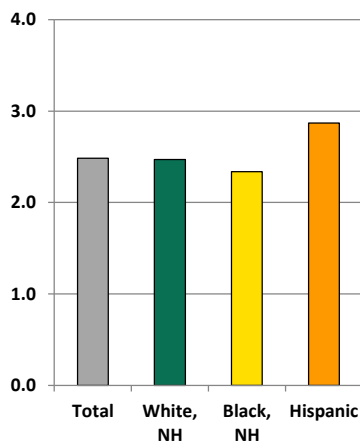
Household Type, 2000 and 2010



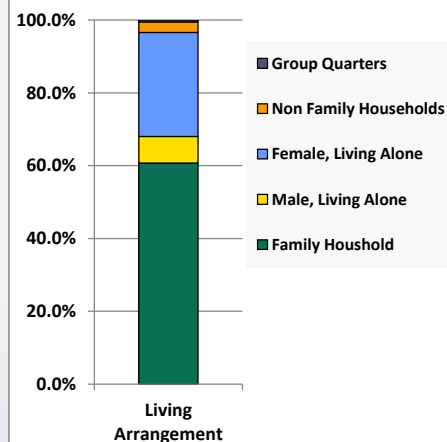
Household Type by Race/Ethnicity, 2010



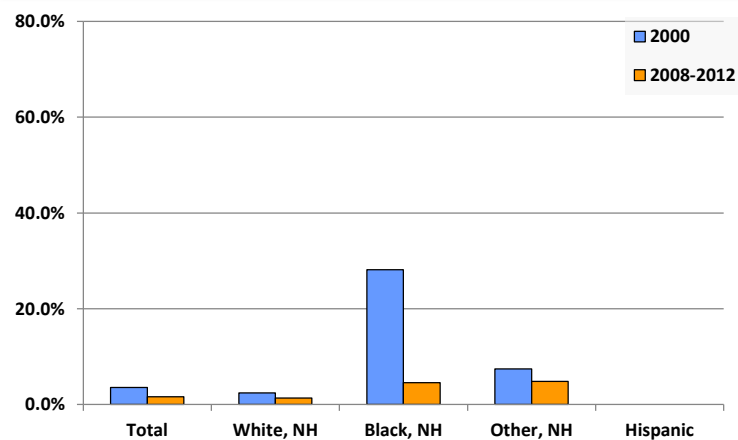
Average Household Size, 2010



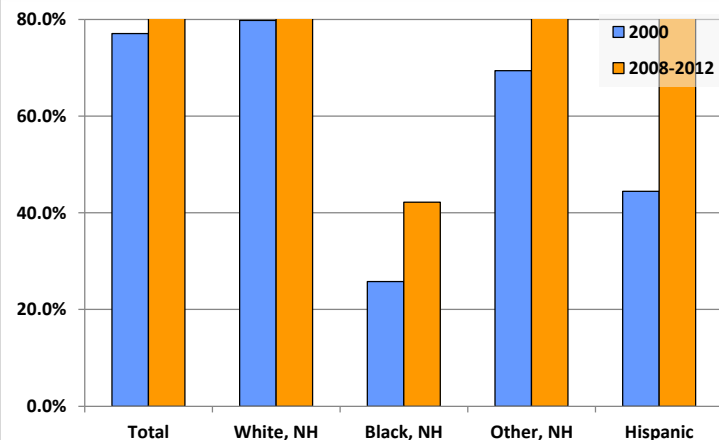
Living Arrangements 65+, 2008-2012



Percent of Adults that Did Not Complete High School



Percent of Adults Who Attained a Bachelor's Degree or Higher



# Reference Data

## Swarthmore Public Library

					Detail for Other, Non-Hispanic					
	Total Population	White, Non- Hispanic	Black, Non- Hispanic	Other, Non- Hispanic	AIAN	Asian	NHOPI	Some Other	Two or More	Hispanic or
								Race	Races	Latino
A. Total Population										
2000 Total	6,170	5,172	288	502	15	335	3	13	136	208
2000 pct of Total	100.0%	83.8%	4.7%	8.1%	0.2%	5.4%	0.0%	0.2%	2.2%	3.4%
2010 Total	6,194	4,896	294	699	15	467	4	15	198	305
2010 pct of Total	100.0%	79.0%	4.7%	11.3%	0.2%	7.5%	0.1%	0.2%	3.2%	4.9%
B. Population by Major Age Groups by Race and Ethnicity										
2000										
0-19	1,862	1,492	84	210	4	120	2	7	77	76
20-64	3,455	2,882	164	280	11	204	1	6	58	129
65+	853	798	40	12	0	11	0	0	1	3
85+	84	75	6	2	0	2	0	0	0	1
2010										
0-19	1,925	1,389	90	313	5	176	3	8	121	133
20-64	3,502	2,797	177	366	9	272	1	7	77	162
65+	767	710	27	20	1	19	0	0	0	10
85+	124	116	3	1	0	1	0	0	0	4
C. Age Mix for Each Racial and Ethnic Group										
2000										
0-19	30.2%	28.8%	29.2%	41.8%	26.7%	35.8%	66.7%	53.8%	56.6%	36.5%
20-64	56.0%	55.7%	56.9%	55.8%	73.3%	60.9%	33.3%	46.2%	42.6%	62.0%
65+	13.8%	15.4%	13.9%	2.4%	0.0%	3.3%	0.0%	0.0%	0.7%	1.4%
85+	1.4%	1.5%	2.1%	0.4%	0.0%	0.6%	0.0%	0.0%	0.0%	0.5%
2010										
0-19	31.1%	28.4%	30.6%	44.8%	33.3%	37.7%	75.0%	53.3%	61.1%	43.6%
20-64	56.5%	57.1%	60.2%	52.4%	60.0%	58.2%	25.0%	46.7%	38.9%	53.1%
65+	12.4%	14.5%	9.2%	2.9%	6.7%	4.1%	0.0%	0.0%	0.0%	3.3%
85+	2.0%	2.4%	1.0%	0.1%	0.0%	0.2%	0.0%	0.0%	0.0%	1.3%
D. Racial and Ethnic Composition of Each Age Group										
2000										
0-19	100.0%	80.1%	4.5%	11.3%	0.2%	6.4%	0.1%	0.4%	4.1%	4.1%
20-64	100.0%	83.4%	4.7%	8.1%	0.3%	5.9%	0.0%	0.2%	1.7%	3.7%
65+	100.0%	93.6%	4.7%	1.4%	0.0%	1.3%	0.0%	0.0%	0.1%	0.4%
85+	100.0%	89.3%	7.1%	2.4%	0.0%	2.4%	0.0%	0.0%	0.0%	1.2%
2010										
0-19	100.0%	72.2%	4.7%	16.3%	0.3%	9.1%	0.2%	0.4%	6.3%	6.9%
20-64	100.0%	79.9%	5.1%	10.5%	0.3%	7.8%	0.0%	0.2%	2.2%	4.6%
65+	100.0%	92.6%	3.5%	2.6%	0.1%	2.5%	0.0%	0.0%	0.0%	1.3%
85+	100.0%	93.5%	2.4%	0.8%	0.0%	0.8%	0.0%	0.0%	0.0%	3.2%
E. Population Growth										
2000-2010, Change										
0-19	63	-103	6	103	1	56	1	1	44	57
20-64	47	-85	13	86	-2	68	0	1	19	33
65+	-86	-88	-13	8	1	8	0	0	-1	7
85+	40	41	-3	-1	0	-1	0	0	0	3
Total	24	-276	6	197	0	132	1	2	62	97
2000-2010, Pct Change										
0-19	3.4%	-6.9%	7.1%	49.0%	25.0%	46.7%	50.0%	14.3%	57.1%	75.0%
20-64	1.4%	-2.9%	7.9%	30.7%	-18.2%	33.3%	0.0%	16.7%	32.8%	25.6%
65+	-10.1%	-11.0%	-32.5%	66.7%	0.0%	72.7%	0.0%	0.0%	-100.0%	233.3%
85+	47.6%	54.7%	-50.0%	-50.0%	0.0%	-50.0%	0.0%	0.0%	0.0%	300.0%
Total	0.4%	-5.3%	2.1%	39.2%	0.0%	39.4%	33.3%	15.4%	45.6%	46.6%

Source: Decennial Census 2010, 2000, American Community Survey 2008-2012

Prepared for the Pennsylvania State Library by The Pennsylvania State Data Center, 9/2014

# Reference Data

## Swarthmore Public Library

					Detail for Other, Non-Hispanic					Hispanic or Latino
	Total Population	White, Non-Hispanic	Black, Non-Hispanic	Other, Non-Hispanic	AIAN	Asian	NHOPI	Some Other Race	Two or More Races	
F. Population by Library-Defined Age Groups, 2010										
0-5	326	259	12	47	0	22	0	4	21	8
6-10	372	288	8	63	1	21	2	2	37	13
11-13	225	187	7	24	0	15	0	0	9	7
14-18	585	408	40	86	4	48	1	0	33	51
19-32	1,670	1,099	113	297	5	212	0	7	73	161
33-45	738	613	25	84	0	69	0	2	13	16
46-64	1,511	1,332	62	78	4	61	1	0	12	39
65-84	643	594	24	19	1	18	0	0	0	6
85+	124	116	3	1	0	1	0	0	0	4
Total	6,194	4,896	294	699	15	467	4	15	198	305
G. Population by 5-Year Age Cohorts, 2010										
0-4	272	217	11	36	0	17	0	4	15	8
5-9	342	266	7	59	1	19	2	2	35	10
10-14	401	323	14	47	1	25	0	0	21	17
15-19	910	583	58	171	3	115	1	2	50	98
20-24	977	644	64	175	5	115	0	5	50	94
25-29	172	123	22	17	0	16	0	0	1	10
30-34	173	147	5	18	0	17	0	0	1	3
35-39	271	210	6	46	0	39	0	1	6	9
40-44	330	283	11	29	0	21	0	1	7	7
45-49	386	316	24	35	0	30	1	0	4	11
50-54	454	401	20	20	2	13	0	0	5	13
55-59	414	379	13	14	0	11	0	0	3	8
60-64	325	294	12	12	2	10	0	0	0	7
65-69	239	220	9	6	0	6	0	0	0	4
70-74	170	152	8	8	1	7	0	0	0	2
75-79	107	101	4	2	0	2	0	0	0	0
80-84	127	121	3	3	0	3	0	0	0	0
85-89	81	78	0	1	0	1	0	0	0	2
90-94	34	31	1	0	0	0	0	0	0	2
95-99	8	6	2	0	0	0	0	0	0	0
100+	1	1	0	0	0	0	0	0	0	0
Total	6,194	4,896	294	699	15	467	4	15	198	305

Source: Decennial Census 2010, 2000, American Community Survey 2008-2012

Prepared for the Pennsylvania State Library by The Pennsylvania State Data Center, 9/2014

# Reference Data

## Swarthmore Public Library

### H. Income Distribution, 2008-2012

Range (in thousands)	Households	Pct of Total
<\$10K	75	3.7%
\$10K to <\$25K	189	9.3%
\$25K to <\$50K	162	8.0%
\$50K to <\$75K	227	11.2%
\$75K to <\$100K	254	12.5%
\$100K to <\$150K	384	18.9%
\$150K+	739	36.4%

### I. Household Type, 2010

Household Type	2000	2000pct	2010	2010pct
Total Households	1,993	100.0%	1,963	100.0%
Family Households	1,348	67.6%	1,327	67.6%
Husband-wife, no children w/children	569	28.5%	557	28.4%
Female head, no husband, w/ children	65	3.3%	87	4.4%
Male head, no wife, w/ children	16	0.8%	25	1.3%
Without children	698	35.0%	658	33.5%
Nonfamily households	645	32.4%	636	32.4%
Living alone	548	27.5%	541	27.6%
Other nonfamily	97	4.9%	95	4.8%

### J. Household Type by Race and Ethnicity, 2008-2012

Household Type	White, NH	Black, NH	Other, NH	Hispanic
Total Households	1,718	89	128	38
Husband wife family	58.6%	33.7%	56.3%	57.9%
Family with male head, no wife	2.2%	6.7%	3.1%	2.6%
family with female head, no husband	6.9%	23.6%	9.4%	10.5%
Living alone	27.9%	30.3%	23.4%	18.4%
Other nonfamily	4.4%	5.6%	7.8%	10.5%

### K. Poverty, 2008-2012

Families	Poverty	PA
All families	3.0%	9.1%
Families w/ related children	6.7%	15.3%
Female householder, no husband present	46.1%	28.8%
Female householder, no husband present, w/ related children	63.1%	39.2%
All people	5.3%	13.1%
Under 18 years	3.6%	18.4%
18 to 64 years	7.0%	12.3%
65 years and over	1.6%	8.4%

### L. Educational Attainment by Race and Ethnicity, 2008-2012

Education Level	White, NH	Black	Other	Hispanic	Total
Population 25 years and over	2,863	109	185	197	3,316
Less than high school	1.4%	4.6%	5%	0.0%	1.6%
High school graduate (includes equivalency	6.3%	26.6%	2%	11.2%	7.0%
Some college or associates degree	11.2%	26.6%	9%	0.0%	11.0%
Bachelors degree or higher	81.2%	42.2%	84%	88.8%	80.4%

### M. Occupation, 2008-2012

Occupation	Estimate	Percent
Civilian population age 16 years and over	3,094	100.0%
Management, professional, and related occupations	2,158	69.7%
Service occupations	342	11.1%
Sales and office occupations	504	16.3%
Farming, fishing, and forestry occupations	0	0.0%
Construction, extraction, maintenance, and repair occupations	23	0.7%
Production, transportation, and material moving occupations	67	2.2%

### N. Class of Worker, 2008-2012

Occupation	Estimate	Percent
Civilian population age 16 years and over	3,094	100.0%
Private, for profit, wage and salary employee	1,225	39.6%
Private, not for profit, wage and salary employee	1,127	36.4%
Private, for profit, wage and salary self-employed in own business	183	5.9%
Government workers	343	11.1%
Self-employed in own not incorporated business	216	7.0%
Unpaid family workers in family business	0	0.0%