

Demographic Profile Sykesville Public Library

Population Growth: The total population of the Sykesville Public Library service area decreased by .0 percent over the past decade to 2,973; this decline rate was lower than the statewide rate of 3.4 percent.

Age and Sex: In 2010, the Sykesville Public Library service area had a total population of 2,973 - 1,483 males (49.9 percent) and 1,490 females (50.1 percent). The age structure of the population in 2010 was as follows: 32.1 percent of the population was under 20 years old, 54.3 percent was 20 to 64 years old and 13.7 percent was 65 years or older.

Race and Ethnicity: For people reporting one race alone, not of Hispanic ethnicity, 97.1 percent were White; .1 percent were Black or African American; 1.8 percent were Other Race Alone.¹ A total of 28 or .9 percent of the population were Hispanic.²

Households: In 2010, there were 1,105 households in the Sykesville Public Library service area. The average household size was 2.69 people. Families made up 67.6 percent of the households. This figure includes both families with (30.0 percent) and without (37.6 percent) children. Of families with children less than 18 years old, 23.1 percent were married-couple families, 4.5 percent were female householder families with no husband present, and the remaining (2.4 percent) were male-headed households with no wife present.

Education: The educational attainment of the population 25 years and over was lower in the Sykesville Public Library service area than in Pennsylvania. During the period 2008-2012, 6.8 percent of residents had earned a Bachelor's degree or higher, compared with 27.0 percent statewide. A total of 429 or 23.5 percent had not completed high school, compared with 11.7 percent for the commonwealth as a whole.

Income and Poverty: Households with incomes of \$25,000 to \$49,999 (34.8 percent) made up the largest percent of households in the Sykesville Public Library service area in 2008-2012. For comparison, 24.4 percent of commonwealth households were in this range during the period.

In 2008-2012, the overall poverty rate for the Sykesville Public Library service area was higher than Pennsylvania (19.6 percent compared to 13.1 percent). The poverty rate for the population under 18 years of age was 36.0 percent, compared with 14.7 percent of people 18 to 64 years and 7.4 percent for those aged 65 years and over. A total of 94 or 13.3 percent of all families had incomes below poverty level. In 2008-2012, 26.9 percent of families with related children and 70.0 percent of families with a female householder and no husband with related children present had incomes below the poverty level.

Class of Worker and Occupation: In 2008-2012, 83.8 percent of the workforce was private wage and salary workers; 6.0 percent were federal, state, or local government workers; and 9.9 percent were self-employed in their own (not incorporated) business.

The top occupation group for the civilian employed population 16 years and over in the Sykesville Public Library service area in 2008-2012 was Production (25.6 percent).

¹ Other race includes those who identified themselves as American Indian/Alaska Native, Asian, Native Hawaiian/Other Pacific Islander, Some Other Race and Two or More Races on the 2010 Census form.

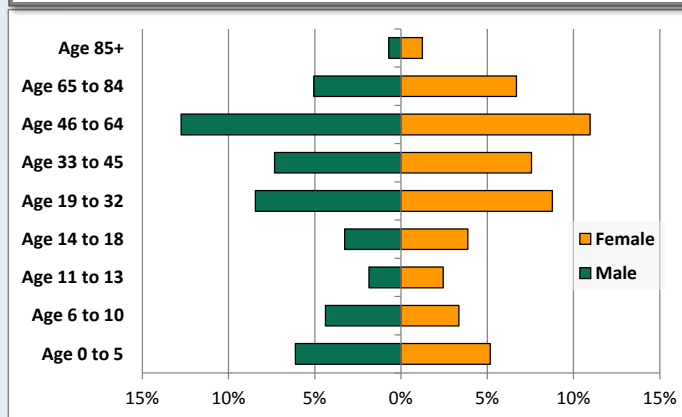
² People of Hispanic origin may be of any race.

Demographic Profile

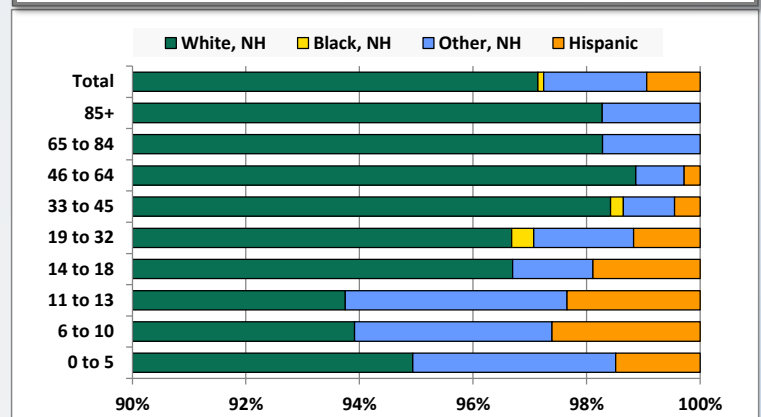
Sykesville Public Library

Key Indicators		
	2000	2010
Population Growth		
Total Population	2,973	2,973
10-Year Growth	N/A	0.0%
Diversity		
White Alone, Non-Hispanic	99.1%	97.1%
Black Alone, Non-Hispanic	0.1%	0.1%
Other Race Alone, Non-Hispanic	0.4%	1.8%
Percent Hispanic	0.4%	0.9%
Aging		
Percent 65 Years and Over	15.1%	13.7%
Households		
Percent Married Couple with Own Children	28.5%	23.1%
Percent Living Alone	25.0%	26.6%

Population by Library-Defined Age Group, 2010



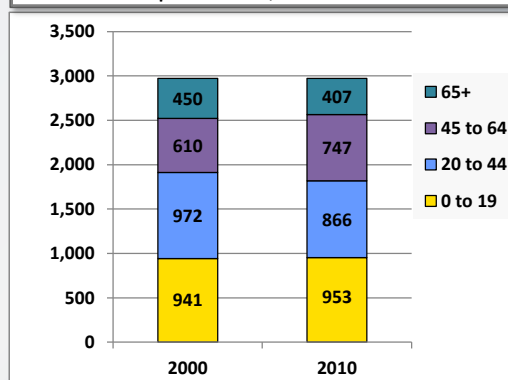
Race/Ethnicity by Library-Defined Age Group, 2010



Population Growth by Library-Defined Age Group, 2000 to 2010

Age Group	2010	Change	
		Numeric	Percent
Total	2,973	0	0.0%
85+	58	16	38.1%
65 to 84	349	-59	-14.5%
46 to 64	705	154	27.9%
33 to 45	443	-109	-19.7%
19 to 32	512	-7	-1.3%
14 to 18	212	-15	-6.6%
11 to 13	128	-2	-1.5%
6 to 10	230	9	4.1%
0 to 5	336	13	4.0%

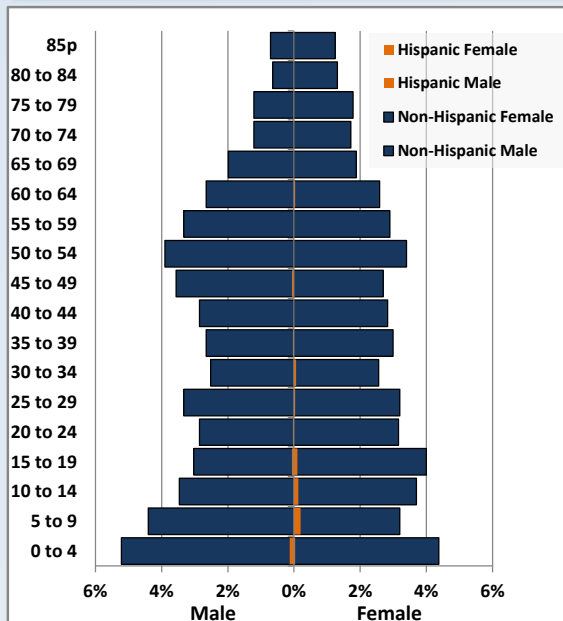
Population Total, 2000 and 2010



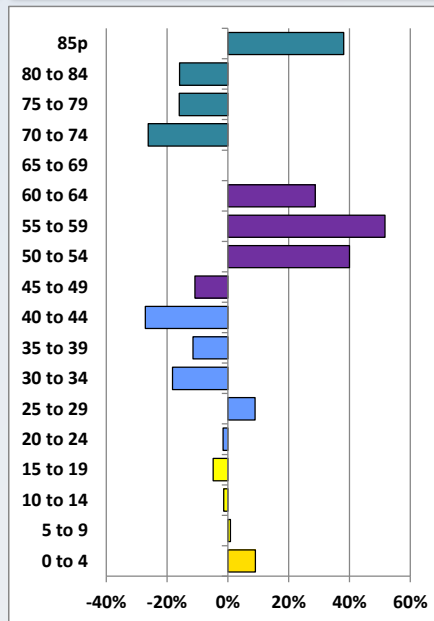
Demographic Profile

Sykesville Public Library

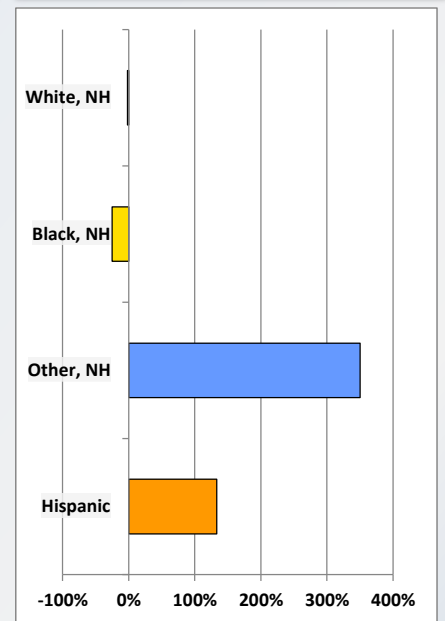
Population by 5-Year Age Cohorts



Pop Change by Age, 2000 to 2010

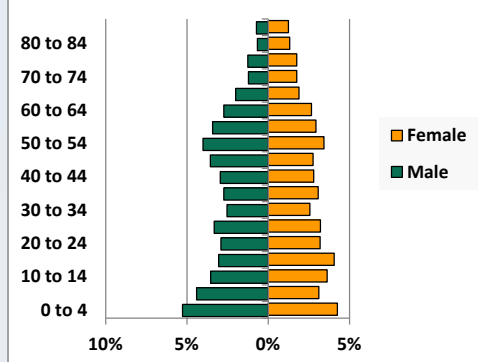


Pop Change by Race/Ethnicity, 2000 to 2010

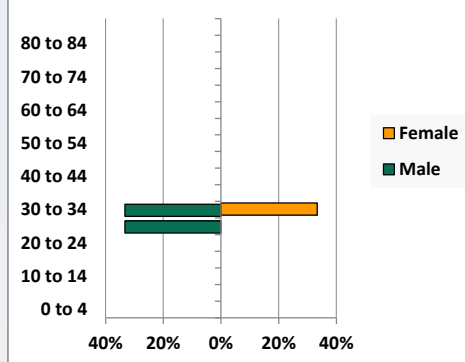


Population by Age, Race and Ethnicity 2010

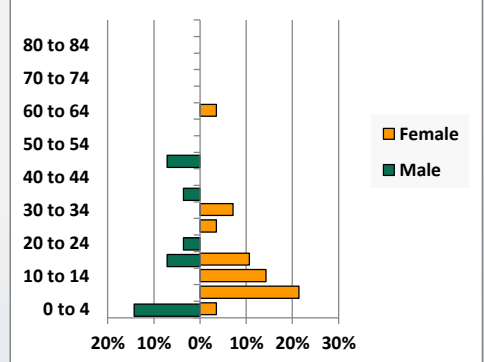
White, Not Hispanic



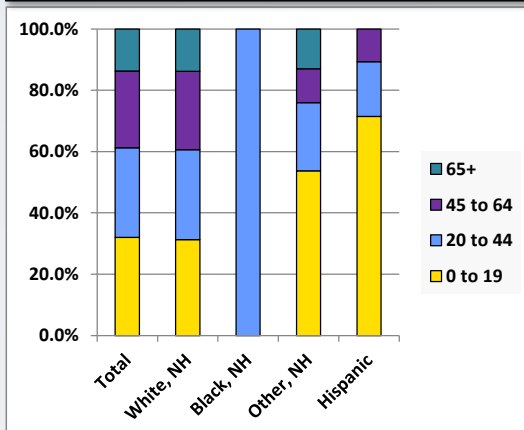
Black, Non-Hispanic



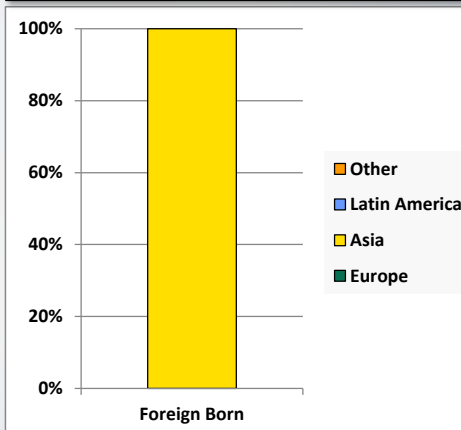
Hispanic



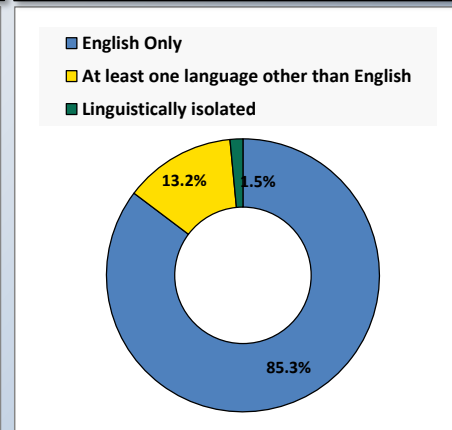
Age by Race and Ethnicity, 2010



Foreign Born, 2010



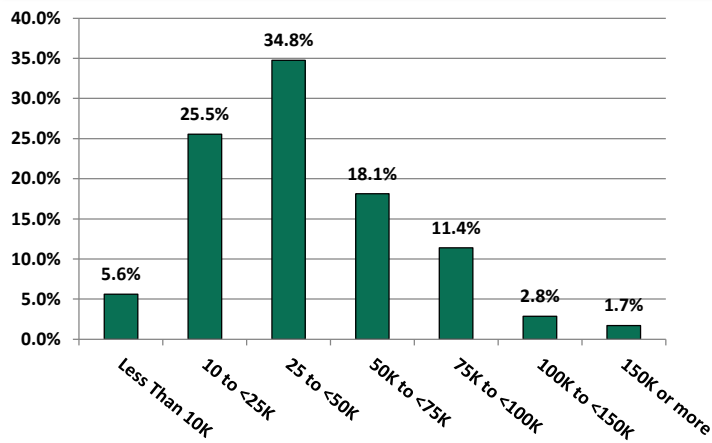
Household Language, 2010



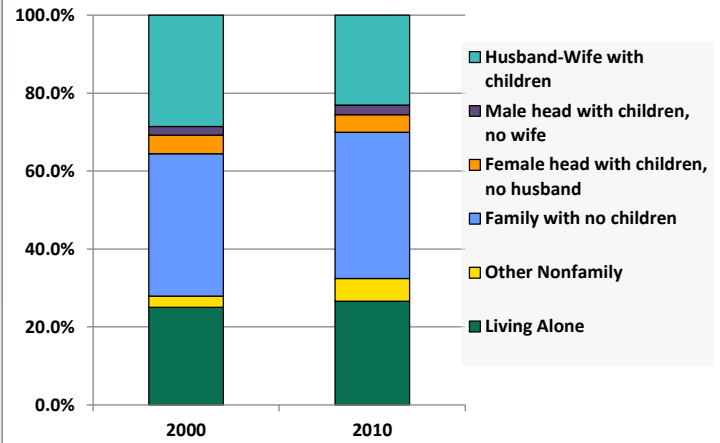
Demographic Profile

Sykesville Public Library

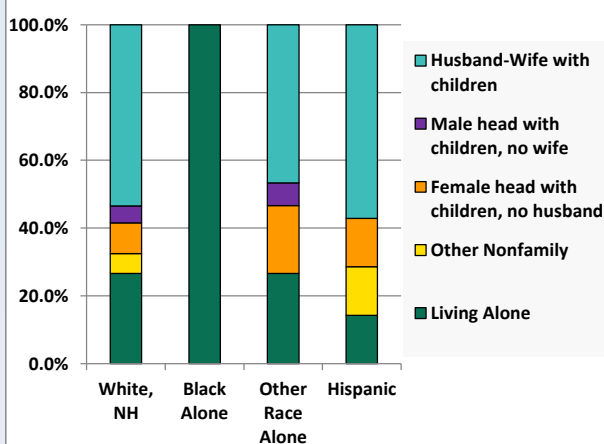
Household Income Distribution, 2008-2012



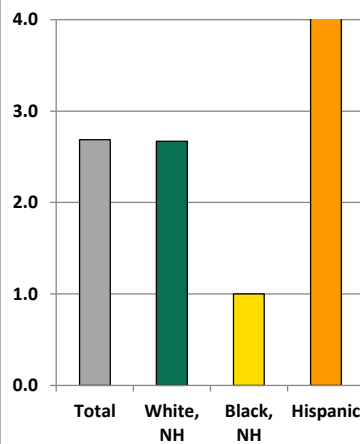
Household Type, 2000 and 2010



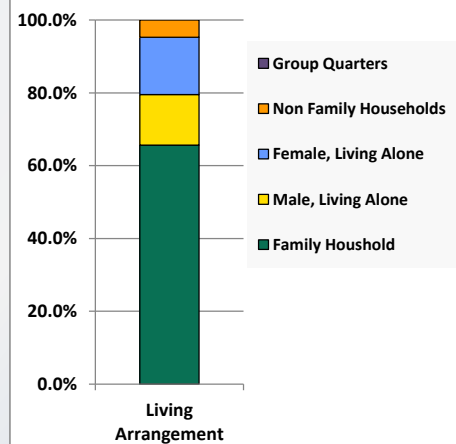
Household Type by Race/Ethnicity, 2010



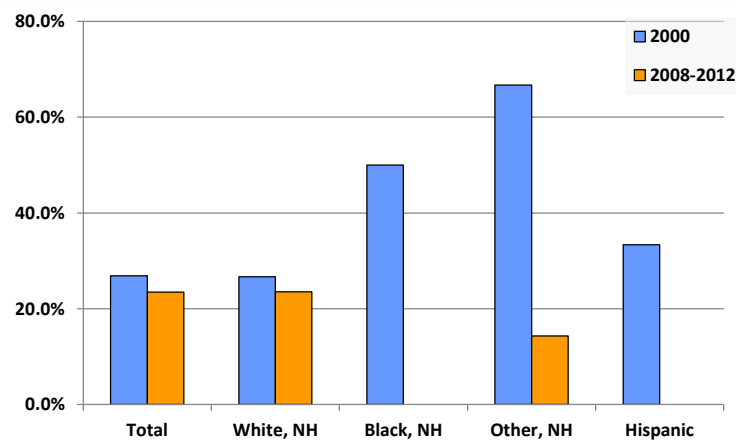
Average Household Size, 2010



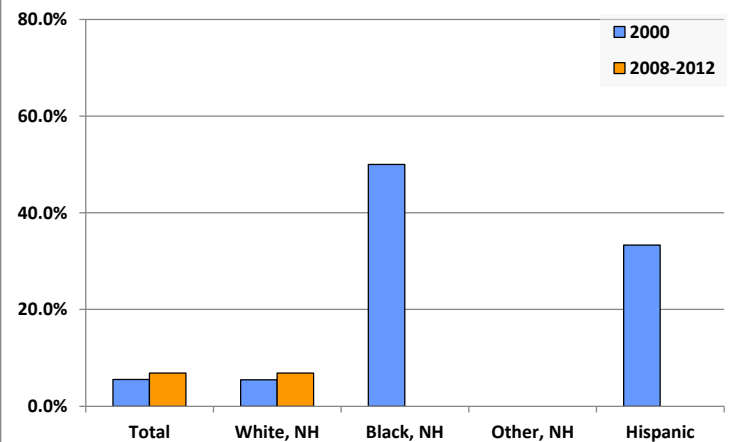
Living Arrangements 65+, 2008-2012



Percent of Adults that Did Not Complete High School



Percent of Adults Who Attained a Bachelor's Degree or Higher



Reference Data

Sykesville Public Library

					Detail for Other, Non-Hispanic					
	Total Population	White, Non- Hispanic	Black, Non- Hispanic	Other, Non- Hispanic	AIAN	Asian	NHOPI	Some Other	Two or More	Hispanic or
								Race	Races	Latino
A. Total Population										
2000 Total	2,973	2,945	4	12	4	0	1	0	7	12
2000 pct of Total	100.0%	99.1%	0.1%	0.4%	0.1%	0.0%	0.0%	0.0%	0.2%	0.4%
2010 Total	2,973	2,888	3	54	4	3	0	3	44	28
2010 pct of Total	100.0%	97.1%	0.1%	1.8%	0.1%	0.1%	0.0%	0.1%	1.5%	0.9%
B. Population by Major Age Groups by Race and Ethnicity										
2000										
0-19	941	931	2	3	0	0	1	0	2	5
20-64	1,582	1,565	1	9	4	0	0	0	5	7
65+	450	449	1	0	0	0	0	0	0	0
85+	42	42	0	0	0	0	0	0	0	0
2010										
0-19	953	904	0	29	0	0	0	1	28	20
20-64	1,613	1,584	3	18	4	2	0	2	10	8
65+	407	400	0	7	0	1	0	0	6	0
85+	58	57	0	1	0	0	0	0	1	0
C. Age Mix for Each Racial and Ethnic Group										
2000										
0-19	31.7%	31.6%	50.0%	25.0%	0.0%	0.0%	100.0%	0.0%	28.6%	41.7%
20-64	53.2%	53.1%	25.0%	75.0%	100.0%	0.0%	0.0%	0.0%	71.4%	58.3%
65+	15.1%	15.2%	25.0%	0.0%	0.0%	0.0%	0.0%	0.0%	0.0%	0.0%
85+	1.4%	1.4%	0.0%	0.0%	0.0%	0.0%	0.0%	0.0%	0.0%	0.0%
2010										
0-19	32.1%	31.3%	0.0%	53.7%	0.0%	0.0%	0.0%	33.3%	63.6%	71.4%
20-64	54.3%	54.8%	100.0%	33.3%	100.0%	66.7%	0.0%	66.7%	22.7%	28.6%
65+	13.7%	13.9%	0.0%	13.0%	0.0%	33.3%	0.0%	0.0%	13.6%	0.0%
85+	2.0%	2.0%	0.0%	1.9%	0.0%	0.0%	0.0%	0.0%	2.3%	0.0%
D. Racial and Ethnic Composition of Each Age Group										
2000										
0-19	100.0%	98.9%	0.2%	0.3%	0.0%	0.0%	0.1%	0.0%	0.2%	0.5%
20-64	100.0%	98.9%	0.1%	0.6%	0.3%	0.0%	0.0%	0.0%	0.3%	0.4%
65+	100.0%	99.8%	0.2%	0.0%	0.0%	0.0%	0.0%	0.0%	0.0%	0.0%
85+	100.0%	100.0%	0.0%	0.0%	0.0%	0.0%	0.0%	0.0%	0.0%	0.0%
2010										
0-19	100.0%	94.9%	0.0%	3.0%	0.0%	0.0%	0.0%	0.1%	2.9%	2.1%
20-64	100.0%	98.2%	0.2%	1.1%	0.2%	0.1%	0.0%	0.1%	0.6%	0.5%
65+	100.0%	98.3%	0.0%	1.7%	0.0%	0.2%	0.0%	0.0%	1.5%	0.0%
85+	100.0%	98.3%	0.0%	1.7%	0.0%	0.0%	0.0%	0.0%	1.7%	0.0%
E. Population Growth										
2000-2010, Change										
0-19	12	-27	-2	26	0	0	-1	1	26	15
20-64	31	19	2	9	0	2	0	2	5	1
65+	-43	-49	-1	7	0	1	0	0	6	0
85+	16	15	0	1	0	0	0	0	1	0
Total	0	-57	-1	42	0	3	-1	3	37	16
2000-2010, Pct Change										
0-19	1.3%	-2.9%	-100.0%	866.7%	0.0%	0.0%	-100.0%	0.0%	1300.0%	300.0%
20-64	2.0%	1.2%	200.0%	100.0%	0.0%	0.0%	0.0%	0.0%	100.0%	14.3%
65+	-9.6%	-10.9%	-100.0%	0.0%	0.0%	0.0%	0.0%	0.0%	0.0%	0.0%
85+	38.1%	35.7%	0.0%	0.0%	0.0%	0.0%	0.0%	0.0%	0.0%	0.0%
Total	0.0%	-1.9%	-25.0%	350.0%	0.0%	0.0%	-100.0%	0.0%	528.6%	133.3%

Source: Decennial Census 2010, 2000, American Community Survey 2008-2012

Prepared for the Pennsylvania State Library by The Pennsylvania State Data Center, 9/2014

Reference Data

Sykesville Public Library

	Total Population	White, Non- Hispanic	Black, Non- Hispanic	Other, Non- Hispanic	Detail for Other, Non-Hispanic					Hispanic or Latino
					AIAN	Asian	NHOPI	Some Other	Two or More	
								Race	Races	
F. Population by Library-Defined Age Groups, 2010										
0-5	336	319	0	12	0	0	0	1	11	5
6-10	230	216	0	8	0	0	0	0	8	6
11-13	128	120	0	5	0	0	0	0	5	3
14-18	212	205	0	3	0	0	0	0	3	4
19-32	512	495	2	9	1	1	0	0	7	6
33-45	443	436	1	4	1	0	0	1	2	2
46-64	705	697	0	6	2	1	0	1	2	2
65-84	349	343	0	6	0	1	0	0	5	0
85+	58	57	0	1	0	0	0	0	1	0
Total	2,973	2,888	3	54	4	3	0	3	44	28
G. Population by 5-Year Age Cohorts, 2010										
0-4	290	275	0	10	0	0	0	1	9	5
5-9	232	217	0	9	0	0	0	0	9	6
10-14	217	207	0	6	0	0	0	0	6	4
15-19	214	205	0	4	0	0	0	0	4	5
20-24	180	176	0	3	0	0	0	0	3	1
25-29	195	189	1	4	1	1	0	0	2	1
30-34	153	147	2	2	0	0	0	0	2	2
35-39	169	168	0	0	0	0	0	0	0	1
40-44	169	166	0	3	1	0	0	1	1	0
45-49	188	183	0	3	1	0	0	1	1	2
50-54	217	215	0	2	1	1	0	0	0	0
55-59	185	184	0	1	0	0	0	0	1	0
60-64	157	156	0	0	0	0	0	0	0	1
65-69	115	113	0	2	0	0	0	0	2	0
70-74	87	86	0	1	0	0	0	0	1	0
75-79	89	87	0	2	0	1	0	0	1	0
80-84	58	57	0	1	0	0	0	0	1	0
85-89	44	43	0	1	0	0	0	0	1	0
90-94	10	10	0	0	0	0	0	0	0	0
95-99	4	4	0	0	0	0	0	0	0	0
100+	0	0	0	0	0	0	0	0	0	0
Total	2,973	2,888	3	54	4	3	0	3	44	28

Source: Decennial Census 2010, 2000, American Community Survey 2008-2012

Prepared for the Pennsylvania State Library by The Pennsylvania State Data Center, 9/2014

Reference Data

Sykesville Public Library

H. Income Distribution, 2008-2012

Range (in thousands)	Households	Pct of Total
<\$10K	59	5.6%
\$10K to <\$25K	269	25.5%
\$25K to <\$50K	366	34.8%
\$50K to <\$75K	191	18.1%
\$75K to <\$100K	120	11.4%
\$100K to <\$150K	30	2.8%
\$150K+	18	1.7%

I. Household Type, 2010

Household Type	2000	2000pct	2010	2010pct
Total Households	1,111	100.0%	1,105	100.0%
Family Households	801	72.1%	747	67.6%
Husband-wife, no children w/children	317	28.5%	255	23.1%
Female head, no husband, w/ children	53	4.8%	50	4.5%
Male head, no wife, w/ children	25	2.3%	27	2.4%
Without children	406	36.5%	415	37.6%
Nonfamily households	310	27.9%	358	32.4%
Living alone	278	25.0%	294	26.6%
Other nonfamily	32	2.9%	64	5.8%

J. Household Type by Race and Ethnicity, 2008-2012

Household Type	White, NH	Black, NH	Other, NH	Hispanic
Total Households	1,084	1	15	7
Husband wife family	53.4%	0.0%	46.7%	57.1%
Family with male head, no wife	5.1%	0.0%	6.7%	0.0%
family with female head, no husband	9.0%	0.0%	20.0%	14.3%
Living alone	26.7%	100.0%	26.7%	14.3%
Other nonfamily	5.8%	0.0%	0.0%	14.3%

K. Poverty, 2008-2012

Families	Poverty	PA
All families	13.3%	9.1%
Families w/ related children	26.9%	15.3%
Female householder, no husband present	35.0%	28.8%
Female householder, no husband present, w/ related children	70.0%	39.2%
All people	19.6%	13.1%
Under 18 years	36.0%	18.4%
18 to 64 years	14.7%	12.3%
65 years and over	7.4%	8.4%

L. Educational Attainment by Race and Ethnicity, 2008-2012

Education Level	White, NH	Black	Other	Hispanic	Total
Population 25 years and over	1,821	0	7	0	1,828
Less than high school	23.5%	0.0%	14%	0.0%	23.5%
High school graduate (includes equivalency	51.8%	0.0%	86%	0.0%	51.9%
Some college or associates degree	17.8%	0.0%	0%	0.0%	17.8%
Bachelors degree or higher	6.9%	0.0%	0%	0.0%	6.8%

M. Occupation, 2008-2012

Occupation	Estimate	Percent
Civilian population age 16 years and over	1,157	100.0%
Management, professional, and related occupations	212	18.3%
Service occupations	167	14.4%
Sales and office occupations	262	22.6%
Farming, fishing, and forestry occupations	43	3.7%
Construction, extraction, maintenance, and repair occupations	177	15.3%
Production, transportation, and material moving occupations	296	25.6%

N. Class of Worker, 2008-2012

Occupation	Estimate	Percent
Civilian population age 16 years and over	1,157	100.0%
Private, for profit, wage and salary employee	840	72.6%
Private, not for profit, wage and salary employee	89	7.7%
Private, for profit, wage and salary self-employed in own business	40	3.5%
Government workers	69	6.0%
Self-employed in own not incorporated business	115	9.9%
Unpaid family workers in family business	4	0.3%