

## Demographic Profile Tri-Valley Free Public Library

**Population Growth:** The total population of the Tri-Valley Free Public Library service area decreased by .1 percent over the past decade to 3,516; this decline rate was lower than the statewide rate of 3.4 percent.

**Age and Sex:** In 2010, the Tri-Valley Free Public Library service area had a total population of 3,516 - 1,777 males (50.5 percent) and 1,739 females (49.5 percent). The age structure of the population in 2010 was as follows: 22.1 percent of the population was under 20 years old, 59.0 percent was 20 to 64 years old and 18.9 percent was 65 years or older.

**Race and Ethnicity:** For people reporting one race alone, not of Hispanic ethnicity, 98.2 percent were White; .1 percent were Black or African American; 1.0 percent were Other Race Alone.<sup>1</sup> A total of 26 or .7 percent of the population were Hispanic.<sup>2</sup>

**Households:** In 2010, there were 1,493 households in the Tri-Valley Free Public Library service area. The average household size was 2.35 people. Families made up 68.1 percent of the households. This figure includes both families with (24.2 percent) and without (43.9 percent) children. Of families with children less than 18 years old, 18.0 percent were married-couple families, 3.6 percent were female householder families with no husband present, and the remaining (2.5 percent) were male-headed households with no wife present.

**Education:** The educational attainment of the population 25 years and over was lower in the Tri-Valley Free Public Library service area than in Pennsylvania. During the period 2008-2012, 12.4 percent of residents had earned a Bachelor's degree or higher, compared with 27.0 percent statewide. A total of 400 or 16.2 percent had not completed high school, compared with 11.7 percent for the commonwealth as a whole.

**Income and Poverty:** Households with incomes of \$25,000 to \$49,999 (29.3 percent) made up the largest percent of households in the Tri-Valley Free Public Library service area in 2008-2012. For comparison, 24.4 percent of commonwealth households were in this range during the period.

In 2008-2012, the overall poverty rate for the Tri-Valley Free Public Library service area was lower than Pennsylvania (3.5 percent compared to 13.1 percent). The poverty rate for the population under 18 years of age was .0 percent, compared with 4.3 percent of people 18 to 64 years and 5.0 percent for those aged 65 years and over. A total of 24 or 2.3 percent of all families had incomes below poverty level. In 2008-2012, .0 percent of families with related children and .0 percent of families with a female householder and no husband with related children present had incomes below the poverty level.

**Class of Worker and Occupation:** In 2008-2012, 83.0 percent of the workforce was private wage and salary workers; 13.4 percent were federal, state, or local government workers; and 3.6 percent were self-employed in their own (not incorporated) business.

The top occupation group for the civilian employed population 16 years and over in the Tri-Valley Free Public Library service area in 2008-2012 was Management, business, science, and arts (23.9 percent).

---

<sup>1</sup> Other race includes those who identified themselves as American Indian/Alaska Native, Asian, Native Hawaiian/Other Pacific Islander, Some Other Race and Two or More Races on the 2010 Census form.

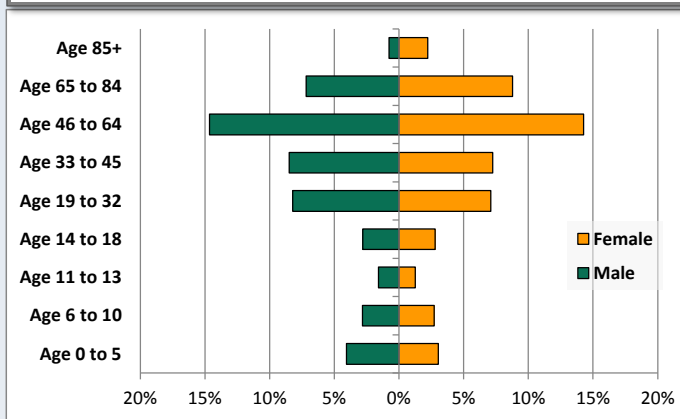
<sup>2</sup> People of Hispanic origin may be of any race.

# Demographic Profile

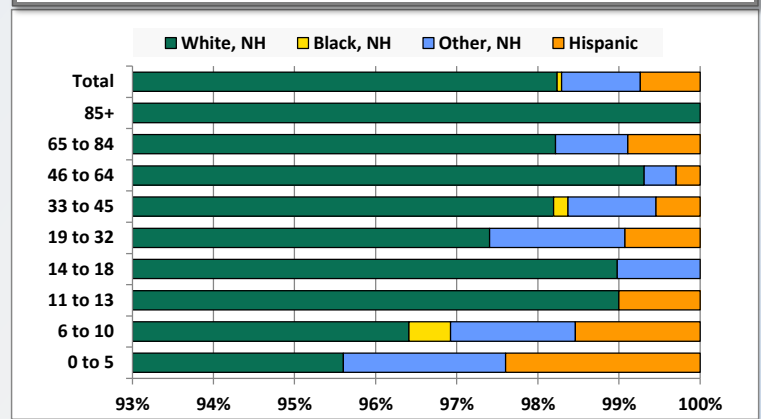
Tri-Valley Free Public Library

| Key Indicators                           |       |       |
|--|-------|-------|
|  | 2000  | 2010  |
| <b>Population Growth</b>                 |       |       |
| Total Population                         | 3,519 | 3,516 |
| 10-Year Growth                           | N/A   | -0.1% |
| <b>Diversity</b>                         |       |       |
| White Alone, Non-Hispanic                | 98.9% | 98.2% |
| Black Alone, Non-Hispanic                | 0.0%  | 0.1%  |
| Other Race Alone, Non-Hispanic           | 0.5%  | 1.0%  |
| Percent Hispanic                         | 0.6%  | 0.7%  |
| <b>Aging</b>                             |       |       |
| Percent 65 Years and Over                | 19.9% | 18.9% |
| <b>Households</b>                        |       |       |
| Percent Married Couple with Own Children | 23.0% | 18.0% |
| Percent Living Alone                     | 25.9% | 27.1% |

Population by Library-Defined Age Group, 2010



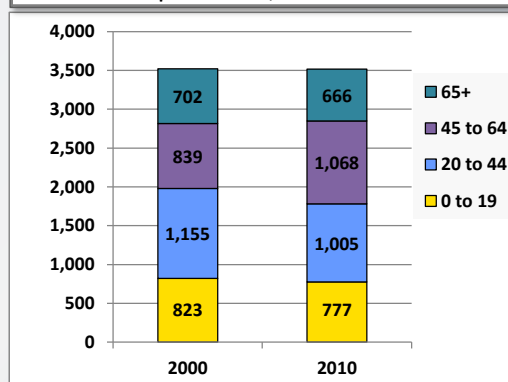
Race/Ethnicity by Library-Defined Age Group, 2010



Population Growth by Library-Defined Age Group, 2000 to 2010

| Age Group | 2010  | Change  |         |
|-----------|-------|---------|---------|
|           |       | Numeric | Percent |
| Total     | 3,516 | -3      | -0.1%   |
| 85+       | 105   | 29      | 38.2%   |
| 65 to 84  | 561   | -65     | -10.4%  |
| 46 to 64  | 1,017 | 231     | 29.4%   |
| 33 to 45  | 553   | -145    | -20.8%  |
| 19 to 32  | 539   | -6      | -1.1%   |
| 14 to 18  | 196   | -64     | -24.6%  |
| 11 to 13  | 100   | -14     | -12.3%  |
| 6 to 10   | 195   | -10     | -4.9%   |
| 0 to 5    | 250   | 41      | 19.6%   |

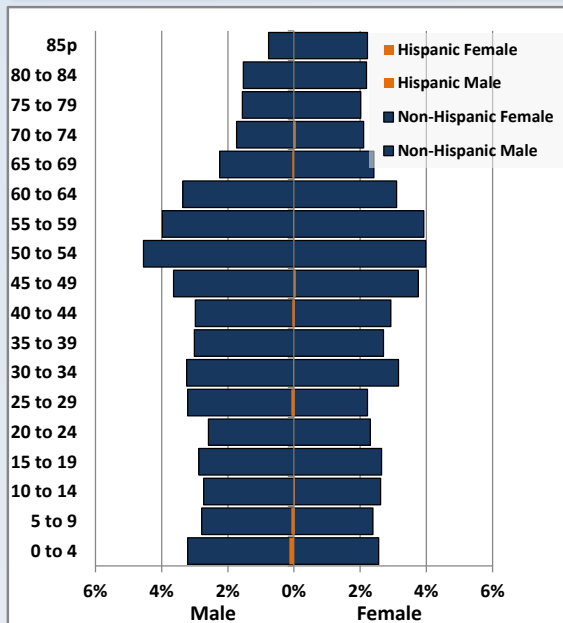
Population Total, 2000 and 2010



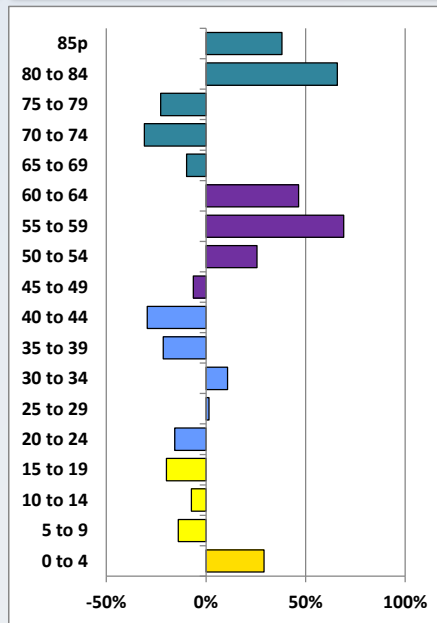
# Demographic Profile

Tri-Valley Free Public Library

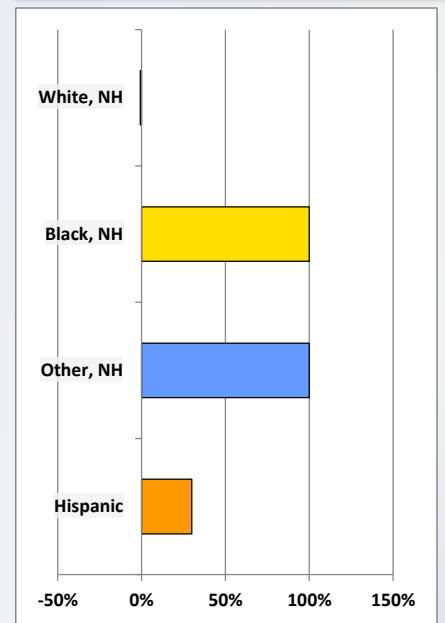
Population by 5-Year Age Cohorts



Pop Change by Age, 2000 to 2010

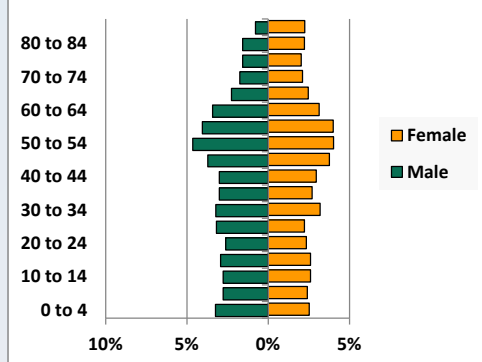


Pop Change by Race/Ethnicity, 2000 to 2010

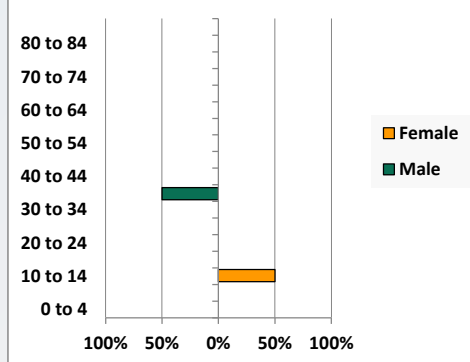


Population by Age, Race and Ethnicity 2010

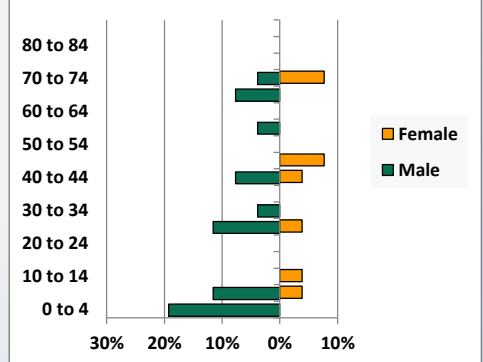
White, Not Hispanic



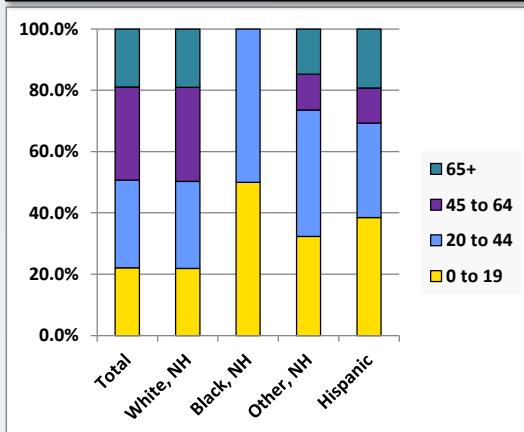
Black, Non-Hispanic



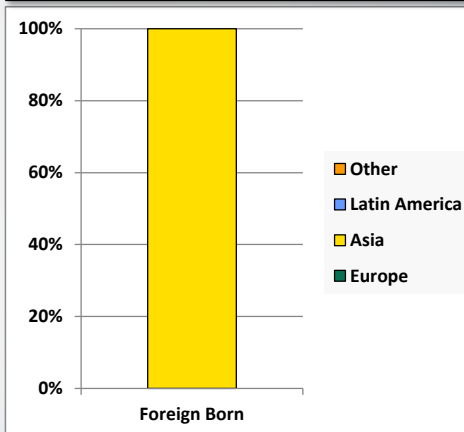
Hispanic



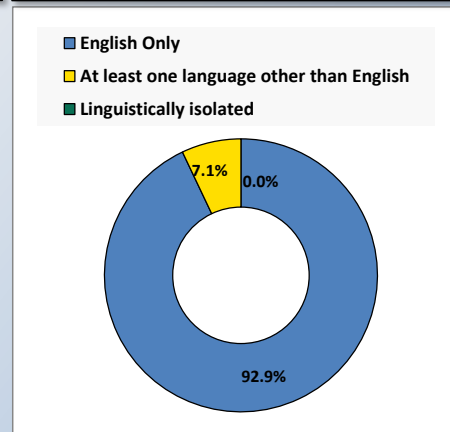
Age by Race and Ethnicity, 2010



Foreign Born, 2010



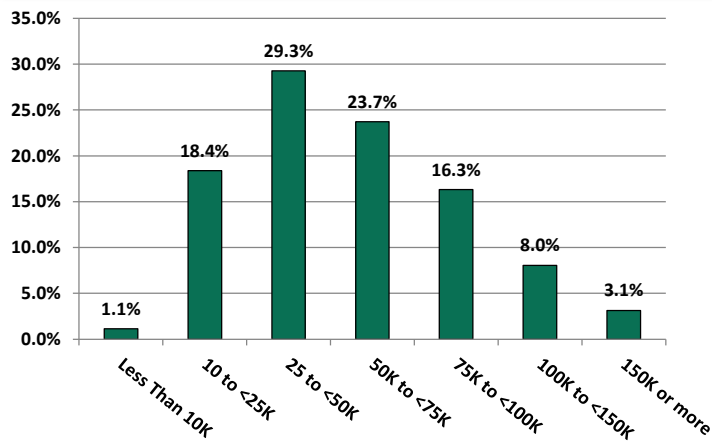
Household Language, 2010



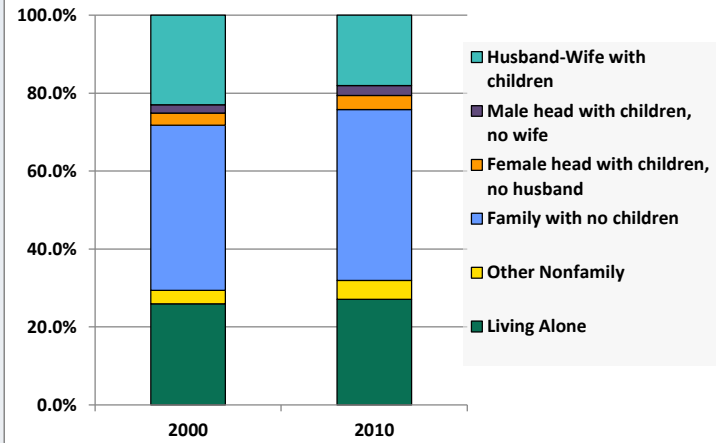
# Demographic Profile

Tri-Valley Free Public Library

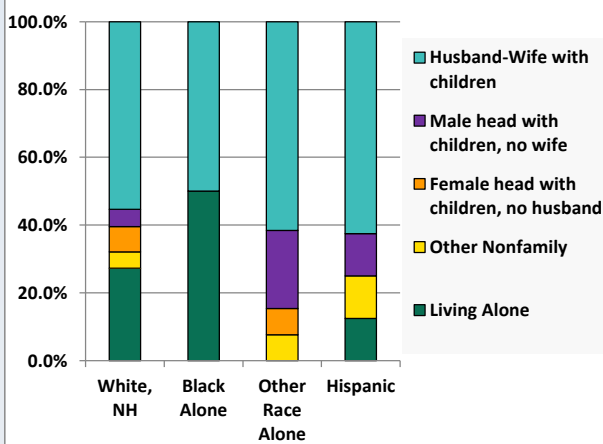
Household Income Distribution, 2008-2012



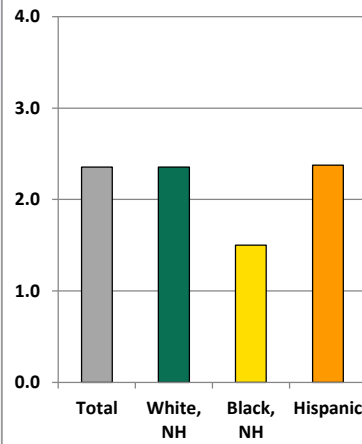
Household Type, 2000 and 2010



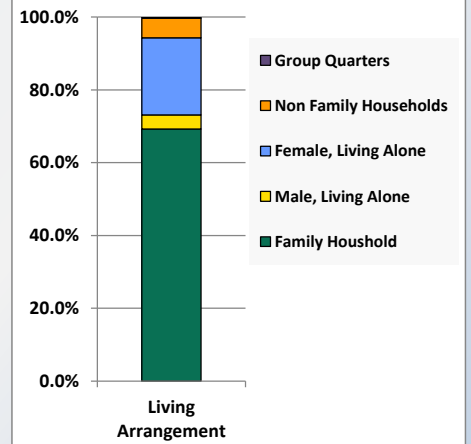
Household Type by Race/Ethnicity, 2010



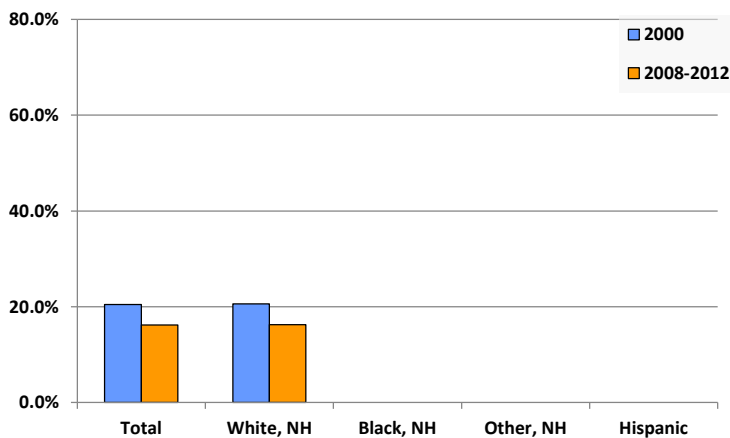
Average Household Size, 2010



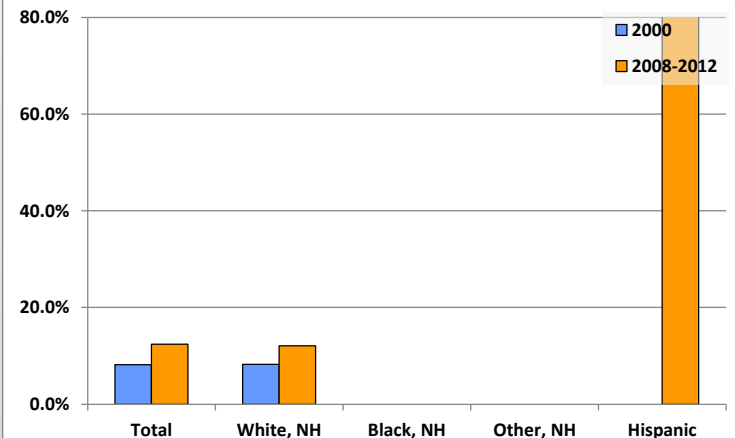
Living Arrangements 65+, 2008-2012



Percent of Adults that Did Not Complete High School



Percent of Adults Who Attained a Bachelor's Degree or Higher



# Reference Data

## Tri-Valley Free Public Library

|   | Total<br>Population | White, Non-<br>Hispanic | Black, Non-<br>Hispanic | Other, Non-<br>Hispanic | Detail for Other, Non-Hispanic |        |         |                    |                      | Hispanic or<br>Latino |
|---|---------------------|-------------------------|-------------------------|-------------------------|--------------------------------|--------|---------|--------------------|----------------------|-----------------------|
|   |                     |                         |                         |                         | AIAN                           | Asian  | NHOPI   | Some Other<br>Race | Two or More<br>Races |                       |
| A. Total Population                                     |                     |                         |                         |                         |                                |        |         |                    |                      |                       |
| 2000 Total  | 3,519               | 3,481                   | 1                       | 17                      | 0                              | 8      | 2       | 1                  | 6                    | 20                    |
| 2000 pct of Total                                       | 100.0%              | 98.9%                   | 0.0%                    | 0.5%                    | 0.0%                           | 0.2%   | 0.1%    | 0.0%               | 0.2%                 | 0.6%                  |
| 2010 Total  | 3,516               | 3,454                   | 2                       | 34                      | 3                              | 12     | 1       | 0                  | 18                   | 26                    |
| 2010 pct of Total                                       | 100.0%              | 98.2%                   | 0.1%                    | 1.0%                    | 0.1%                           | 0.3%   | 0.0%    | 0.0%               | 0.5%                 | 0.7%                  |
| B. Population by Major Age Groups by Race and Ethnicity |                     |                         |                         |                         |                                |        |         |                    |                      |                       |
| 2000  |                     |                         |                         |                         |                                |        |         |                    |                      |                       |
| 0-19  | 823                 | 810                     | 0                       | 7                       | 0                              | 2      | 1       | 1                  | 3                    | 6                     |
| 20-64   | 1,994               | 1,976                   | 1                       | 7                       | 0                              | 4      | 1       | 0                  | 2                    | 10                    |
| 65+   | 702                 | 695                     | 0                       | 3                       | 0                              | 2      | 0       | 0                  | 1                    | 4                     |
| 85+   | 76                  | 76                      | 0                       | 0                       | 0                              | 0      | 0       | 0                  | 0                    | 0                     |
| 2010  |                     |                         |                         |                         |                                |        |         |                    |                      |                       |
| 0-19  | 777                 | 755                     | 1                       | 11                      | 0                              | 2      | 0       | 0                  | 9                    | 10                    |
| 20-64   | 2,073               | 2,043                   | 1                       | 18                      | 1                              | 9      | 1       | 0                  | 7                    | 11                    |
| 65+   | 666                 | 656                     | 0                       | 5                       | 2                              | 1      | 0       | 0                  | 2                    | 5                     |
| 85+   | 105                 | 105                     | 0                       | 0                       | 0                              | 0      | 0       | 0                  | 0                    | 0                     |
| C. Age Mix for Each Racial and Ethnic Group             |                     |                         |                         |                         |                                |        |         |                    |                      |                       |
| 2000  |                     |                         |                         |                         |                                |        |         |                    |                      |                       |
| 0-19  | 23.4%               | 23.3%                   | 0.0%                    | 41.2%                   | 0.0%                           | 25.0%  | 50.0%   | 100.0%             | 50.0%                | 30.0%                 |
| 20-64   | 56.7%               | 56.8%                   | 100.0%                  | 41.2%                   | 0.0%                           | 50.0%  | 50.0%   | 0.0%               | 33.3%                | 50.0%                 |
| 65+   | 19.9%               | 20.0%                   | 0.0%                    | 17.6%                   | 0.0%                           | 25.0%  | 0.0%    | 0.0%               | 16.7%                | 20.0%                 |
| 85+   | 2.2%                | 2.2%                    | 0.0%                    | 0.0%                    | 0.0%                           | 0.0%   | 0.0%    | 0.0%               | 0.0%                 | 0.0%                  |
| 2010  |                     |                         |                         |                         |                                |        |         |                    |                      |                       |
| 0-19  | 22.1%               | 21.9%                   | 50.0%                   | 32.4%                   | 0.0%                           | 16.7%  | 0.0%    | 0.0%               | 50.0%                | 38.5%                 |
| 20-64   | 59.0%               | 59.1%                   | 50.0%                   | 52.9%                   | 33.3%                          | 75.0%  | 100.0%  | 0.0%               | 38.9%                | 42.3%                 |
| 65+   | 18.9%               | 19.0%                   | 0.0%                    | 14.7%                   | 66.7%                          | 8.3%   | 0.0%    | 0.0%               | 11.1%                | 19.2%                 |
| 85+   | 3.0%                | 3.0%                    | 0.0%                    | 0.0%                    | 0.0%                           | 0.0%   | 0.0%    | 0.0%               | 0.0%                 | 0.0%                  |
| D. Racial and Ethnic Composition of Each Age Group      |                     |                         |                         |                         |                                |        |         |                    |                      |                       |
| 2000  |                     |                         |                         |                         |                                |        |         |                    |                      |                       |
| 0-19  | 100.0%              | 98.4%                   | 0.0%                    | 0.9%                    | 0.0%                           | 0.2%   | 0.1%    | 0.1%               | 0.4%                 | 0.7%                  |
| 20-64   | 100.0%              | 99.1%                   | 0.1%                    | 0.4%                    | 0.0%                           | 0.2%   | 0.1%    | 0.0%               | 0.1%                 | 0.5%                  |
| 65+   | 100.0%              | 99.0%                   | 0.0%                    | 0.4%                    | 0.0%                           | 0.3%   | 0.0%    | 0.0%               | 0.1%                 | 0.6%                  |
| 85+   | 100.0%              | 100.0%                  | 0.0%                    | 0.0%                    | 0.0%                           | 0.0%   | 0.0%    | 0.0%               | 0.0%                 | 0.0%                  |
| 2010  |                     |                         |                         |                         |                                |        |         |                    |                      |                       |
| 0-19  | 100.0%              | 97.2%                   | 0.1%                    | 1.4%                    | 0.0%                           | 0.3%   | 0.0%    | 0.0%               | 1.2%                 | 1.3%                  |
| 20-64   | 100.0%              | 98.6%                   | 0.0%                    | 0.9%                    | 0.0%                           | 0.4%   | 0.0%    | 0.0%               | 0.3%                 | 0.5%                  |
| 65+   | 100.0%              | 98.5%                   | 0.0%                    | 0.8%                    | 0.3%                           | 0.2%   | 0.0%    | 0.0%               | 0.3%                 | 0.8%                  |
| 85+   | 100.0%              | 100.0%                  | 0.0%                    | 0.0%                    | 0.0%                           | 0.0%   | 0.0%    | 0.0%               | 0.0%                 | 0.0%                  |
| E. Population Growth                                    |                     |                         |                         |                         |                                |        |         |                    |                      |                       |
| 2000-2010, Change                                       |                     |                         |                         |                         |                                |        |         |                    |                      |                       |
| 0-19  | -46                 | -55                     | 1                       | 4                       | 0                              | 0      | -1      | -1                 | 6                    | 4                     |
| 20-64   | 79                  | 67                      | 0                       | 11                      | 1                              | 5      | 0       | 0                  | 5                    | 1                     |
| 65+   | -36                 | -39                     | 0                       | 2                       | 2                              | -1     | 0       | 0                  | 1                    | 1                     |
| 85+   | 29                  | 29                      | 0                       | 0                       | 0                              | 0      | 0       | 0                  | 0                    | 0                     |
| Total   | -3                  | -27                     | 1                       | 17                      | 3                              | 4      | -1      | -1                 | 12                   | 6                     |
| 2000-2010, Pct Change                                   |                     |                         |                         |                         |                                |        |         |                    |                      |                       |
| 0-19  | -5.6%               | -6.8%                   | 0.0%                    | 57.1%                   | 0.0%                           | 0.0%   | -100.0% | -100.0%            | 200.0%               | 66.7%                 |
| 20-64   | 4.0%                | 3.4%                    | 0.0%                    | 157.1%                  | 0.0%                           | 125.0% | 0.0%    | 0.0%               | 250.0%               | 10.0%                 |
| 65+   | -5.1%               | -5.6%                   | 0.0%                    | 66.7%                   | 0.0%                           | -50.0% | 0.0%    | 0.0%               | 100.0%               | 25.0%                 |
| 85+   | 38.2%               | 38.2%                   | 0.0%                    | 0.0%                    | 0.0%                           | 0.0%   | 0.0%    | 0.0%               | 0.0%                 | 0.0%                  |
| Total   | -0.1%               | -0.8%                   | 100.0%                  | 100.0%                  | 0.0%                           | 50.0%  | -50.0%  | -100.0%            | 200.0%               | 30.0%                 |

Source: Decennial Census 2010, 2000, American Community Survey 2008-2012

Prepared for the Pennsylvania State Library by The Pennsylvania State Data Center, 9/2014

# Reference Data

## Tri-Valley Free Public Library

|   | Total<br>Population | White, Non-<br>Hispanic | Black, Non-<br>Hispanic | Other, Non-<br>Hispanic | Detail for Other, Non-Hispanic |       |       |                    |                      | Hispanic or<br>Latino |
|---|---------------------|-------------------------|-------------------------|-------------------------|--------------------------------|-------|-------|--------------------|----------------------|-----------------------|
|   |                     |                         |                         |                         | AIAN                           | Asian | NHOPI | Some Other<br>Race | Two or More<br>Races |                       |
| F. Population by Library-Defined Age Groups, 2010 |                     |                         |                         |                         |                                |       |       |                    |                      |                       |
| 0-5   | 250                 | 239                     | 0                       | 5                       | 0                              | 0     | 0     | 0                  | 5                    | 6                     |
| 6-10  | 195                 | 188                     | 1                       | 3                       | 0                              | 1     | 0     | 0                  | 2                    | 3                     |
| 11-13   | 100                 | 99                      | 0                       | 0                       | 0                              | 0     | 0     | 0                  | 0                    | 1                     |
| 14-18   | 196                 | 194                     | 0                       | 2                       | 0                              | 1     | 0     | 0                  | 1                    | 0                     |
| 19-32   | 539                 | 525                     | 0                       | 9                       | 0                              | 4     | 1     | 0                  | 4                    | 5                     |
| 33-45   | 553                 | 543                     | 1                       | 6                       | 1                              | 3     | 0     | 0                  | 2                    | 3                     |
| 46-64   | 1,017               | 1,010                   | 0                       | 4                       | 0                              | 2     | 0     | 0                  | 2                    | 3                     |
| 65-84   | 561                 | 551                     | 0                       | 5                       | 2                              | 1     | 0     | 0                  | 2                    | 5                     |
| 85+   | 105                 | 105                     | 0                       | 0                       | 0                              | 0     | 0     | 0                  | 0                    | 0                     |
| Total   | 3,516               | 3,454                   | 2                       | 34                      | 3                              | 12    | 1     | 0                  | 18                   | 26                    |
| G. Population by 5-Year Age Cohorts, 2010         |                     |                         |                         |                         |                                |       |       |                    |                      |                       |
| 0-4   | 208                 | 199                     | 0                       | 4                       | 0                              | 0     | 0     | 0                  | 4                    | 5                     |
| 5-9   | 186                 | 179                     | 0                       | 3                       | 0                              | 1     | 0     | 0                  | 2                    | 4                     |
| 10-14   | 189                 | 186                     | 1                       | 1                       | 0                              | 0     | 0     | 0                  | 1                    | 1                     |
| 15-19   | 194                 | 191                     | 0                       | 3                       | 0                              | 1     | 0     | 0                  | 2                    | 0                     |
| 20-24   | 172                 | 171                     | 0                       | 1                       | 0                              | 0     | 0     | 0                  | 1                    | 0                     |
| 25-29   | 195                 | 187                     | 0                       | 4                       | 0                              | 2     | 1     | 0                  | 1                    | 4                     |
| 30-34   | 226                 | 221                     | 0                       | 4                       | 0                              | 3     | 0     | 0                  | 1                    | 1                     |
| 35-39   | 201                 | 197                     | 1                       | 3                       | 1                              | 0     | 0     | 0                  | 2                    | 0                     |
| 40-44   | 211                 | 206                     | 0                       | 2                       | 0                              | 2     | 0     | 0                  | 0                    | 3                     |
| 45-49   | 262                 | 258                     | 0                       | 2                       | 0                              | 0     | 0     | 0                  | 2                    | 2                     |
| 50-54   | 300                 | 299                     | 0                       | 1                       | 0                              | 1     | 0     | 0                  | 0                    | 0                     |
| 55-59   | 279                 | 278                     | 0                       | 0                       | 0                              | 0     | 0     | 0                  | 0                    | 1                     |
| 60-64   | 227                 | 226                     | 0                       | 1                       | 0                              | 1     | 0     | 0                  | 0                    | 0                     |
| 65-69   | 166                 | 163                     | 0                       | 1                       | 1                              | 0     | 0     | 0                  | 0                    | 2                     |
| 70-74   | 138                 | 133                     | 0                       | 2                       | 1                              | 0     | 0     | 0                  | 1                    | 3                     |
| 75-79   | 126                 | 124                     | 0                       | 2                       | 0                              | 1     | 0     | 0                  | 1                    | 0                     |
| 80-84   | 131                 | 131                     | 0                       | 0                       | 0                              | 0     | 0     | 0                  | 0                    | 0                     |
| 85-89   | 74                  | 74                      | 0                       | 0                       | 0                              | 0     | 0     | 0                  | 0                    | 0                     |
| 90-94   | 25                  | 25                      | 0                       | 0                       | 0                              | 0     | 0     | 0                  | 0                    | 0                     |
| 95-99   | 6                   | 6                       | 0                       | 0                       | 0                              | 0     | 0     | 0                  | 0                    | 0                     |
| 100+  | 0                   | 0                       | 0                       | 0                       | 0                              | 0     | 0     | 0                  | 0                    | 0                     |
| Total   | 3,516               | 3,454                   | 2                       | 34                      | 3                              | 12    | 1     | 0                  | 18                   | 26                    |

Source: Decennial Census 2010, 2000, American Community Survey 2008-2012  
 Prepared for the Pennsylvania State Library by The Pennsylvania State Data Center, 9/2014

# Reference Data

## Tri-Valley Free Public Library

### H. Income Distribution, 2008-2012

| Range (in thousands) | Households | Pct of Total |
|----------------------|------------|--------------|
| <\$10K               | 16         | 1.1%         |
| \$10K to <\$25K      | 258        | 18.4%        |
| \$25K to <\$50K      | 411        | 29.3%        |
| \$50K to <\$75K      | 333        | 23.7%        |
| \$75K to <\$100K     | 229        | 16.3%        |
| \$100K to <\$150K    | 113        | 8.0%         |
| \$150K+              | 44         | 3.1%         |

### I. Household Type, 2010

| Household Type                       | 2000  | 2000pct | 2010  | 2010pct |
|--------------------------------------|-------|---------|-------|---------|
| Total Households                     | 1,447 | 100.0%  | 1,493 | 100.0%  |
| Family Households                    | 1,021 | 70.6%   | 1,016 | 68.1%   |
| Husband-wife, no children w/children | 333   | 23.0%   | 269   | 18.0%   |
| Female head, no husband, w/ children | 45    | 3.1%    | 54    | 3.6%    |
| Male head, no wife, w/ children      | 30    | 2.1%    | 38    | 2.5%    |
| Without children                     | 613   | 42.4%   | 655   | 43.9%   |
| Nonfamily households                 | 426   | 29.4%   | 477   | 31.9%   |
| Living alone                         | 375   | 25.9%   | 405   | 27.1%   |
| Other nonfamily                      | 51    | 3.5%    | 72    | 4.8%    |

### J. Household Type by Race and Ethnicity, 2008-2012

| Household Type                      | White, NH | Black, NH | Other, NH | Hispanic |
|-------------------------------------|-----------|-----------|-----------|----------|
| Total Households                    | 1,475     | 2         | 13        | 8        |
| Husband wife family                 | 55.3%     | 50.0%     | 61.5%     | 62.5%    |
| Family with male head, no wife      | 5.1%      | 0.0%      | 23.1%     | 12.5%    |
| family with female head, no husband | 7.5%      | 0.0%      | 7.7%      | 0.0%     |
| Living alone                        | 27.3%     | 50.0%     | 0.0%      | 12.5%    |
| Other nonfamily                     | 4.8%      | 0.0%      | 7.7%      | 12.5%    |

### K. Poverty, 2008-2012

| Families  | Poverty | PA    |
|---|---------|-------|
| All families  | 2.3%    | 9.1%  |
| Families w/ related children                                | 0.0%    | 15.3% |
| Female householder, no husband present                      | 22.6%   | 28.8% |
| Female householder, no husband present, w/ related children | 0.0%    | 39.2% |
| All people  | 3.5%    | 13.1% |
| Under 18 years  | 0.0%    | 18.4% |
| 18 to 64 years  | 4.3%    | 12.3% |
| 65 years and over   | 5.0%    | 8.4%  |

### L. Educational Attainment by Race and Ethnicity, 2008-2012

| Education Level                            | White, NH | Black | Other | Hispanic | Total |
|--|-----------|-------|-------|----------|-------|
| Population 25 years and over               | 2,461     | 0     | 6     | 9        | 2,476 |
| Less than high school                      | 16.3%     | 0.0%  | 0%    | 0.0%     | 16.2% |
| High school graduate (includes equivalency | 53.5%     | 0.0%  | 100%  | 0.0%     | 53.4% |
| Some college or associates degree          | 18.1%     | 0.0%  | 0%    | 0.0%     | 18.0% |
| Bachelors degree or higher                 | 12.1%     | 0.0%  | 0%    | 100.0%   | 12.4% |

### M. Occupation, 2008-2012

| Occupation  | Estimate | Percent |
|---|----------|---------|
| Civilian population age 16 years and over                     | 1,685    | 100.0%  |
| Management, professional, and related occupations             | 402      | 23.9%   |
| Service occupations   | 256      | 15.2%   |
| Sales and office occupations                                  | 312      | 18.5%   |
| Farming, fishing, and forestry occupations                    | 25       | 1.5%    |
| Construction, extraction, maintenance, and repair occupations | 310      | 18.4%   |
| Production, transportation, and material moving occupations   | 380      | 22.6%   |

### N. Class of Worker, 2008-2012

| Occupation   | Estimate | Percent |
|--|----------|---------|
| Civilian population age 16 years and over                          | 1,685    | 100.0%  |
| Private, for profit, wage and salary employee                      | 1,242    | 73.7%   |
| Private, not for profit, wage and salary employee                  | 99       | 5.9%    |
| Private, for profit, wage and salary self-employed in own business | 57       | 3.4%    |
| Government workers   | 226      | 13.4%   |
| Self-employed in own not incorporated business                     | 61       | 3.6%    |
| Unpaid family workers in family business                           | 0        | 0.0%    |