

Demographic Profile Village Library of Wrightstown

Population Growth: The total population of the Village Library of Wrightstown service area increased by 5.5 percent over the past decade to 2,995; this growth rate was higher than the statewide rate of 3.4 percent.

Age and Sex: In 2010, the Village Library of Wrightstown service area had a total population of 2,995 - 1,491 males (49.8 percent) and 1,504 females (50.2 percent). The age structure of the population in 2010 was as follows: 27.7 percent of the population was under 20 years old, 59.6 percent was 20 to 64 years old and 12.6 percent was 65 years or older.

Race and Ethnicity: For people reporting one race alone, not of Hispanic ethnicity, 93.7 percent were White; 1.4 percent were Black or African American; 3.5 percent were Other Race Alone.¹ A total of 41 or 1.4 percent of the population were Hispanic.²

Households: In 2010, there were 1,036 households in the Village Library of Wrightstown service area. The average household size was 2.89 people. Families made up 80.2 percent of the households. This figure includes both families with (37.1 percent) and without (43.1 percent) children. Of families with children less than 18 years old, 33.6 percent were married-couple families, 2.0 percent were female householder families with no husband present, and the remaining (1.4 percent) were male-headed households with no wife present.

Education: The educational attainment of the population 25 years and over was higher in the Village Library of Wrightstown service area than in Pennsylvania. During the period 2008-2012, 47.9 percent of residents had earned a Bachelor's degree or higher, compared with 27.0 percent statewide. A total of 92 or 4.3 percent had not completed high school, compared with 11.7 percent for the commonwealth as a whole.

Income and Poverty: Households with incomes of \$100,000 or More (49.5 percent) made up the largest percent of households in the Village Library of Wrightstown service area in 2008-2012. For comparison, 20.8 percent of commonwealth households were in this range during the period.

In 2008-2012, the overall poverty rate for the Village Library of Wrightstown service area was lower than Pennsylvania (1.5 percent compared to 13.1 percent). The poverty rate for the population under 18 years of age was .8 percent, compared with 1.1 percent of people 18 to 64 years and 4.2 percent for those aged 65 years and over. A total of 5 or .6 percent of all families had incomes below poverty level. In 2008-2012, 1.3 percent of families with related children and 10.6 percent of families with a female householder and no husband with related children present had incomes below the poverty level.

Class of Worker and Occupation: In 2008-2012, 77.9 percent of the workforce was private wage and salary workers; 12.1 percent were federal, state, or local government workers; and 10.0 percent were self-employed in their own (not incorporated) business.

The top occupation group for the civilian employed population 16 years and over in the Village Library of Wrightstown service area in 2008-2012 was Management, business, science, and arts (49.1 percent).

¹ Other race includes those who identified themselves as American Indian/Alaska Native, Asian, Native Hawaiian/Other Pacific Islander, Some Other Race and Two or More Races on the 2010 Census form.

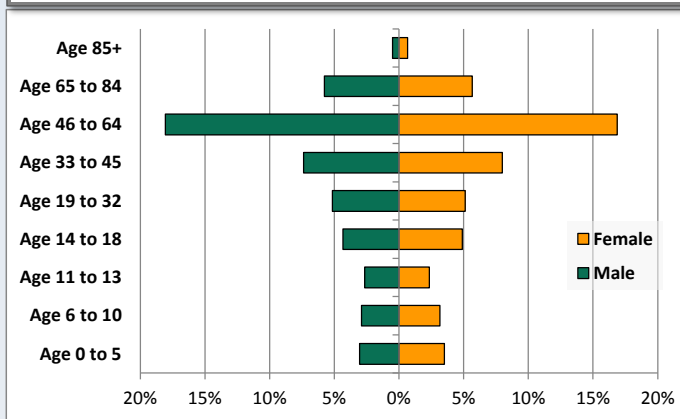
² People of Hispanic origin may be of any race.

Demographic Profile

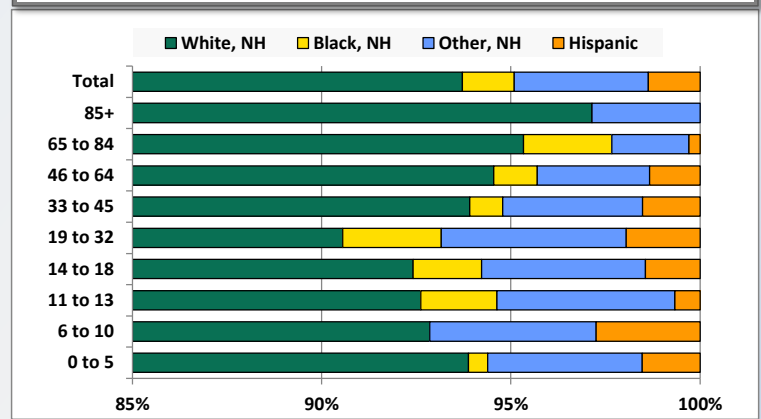
Village Library of Wrightstown

Key Indicators		
	2000	2010
Population Growth		
Total Population	2,839	2,995
10-Year Growth	N/A	5.5%
Diversity		
White Alone, Non-Hispanic	96.5%	93.7%
Black Alone, Non-Hispanic	0.8%	1.4%
Other Race Alone, Non-Hispanic	2.1%	3.5%
Percent Hispanic	0.6%	1.4%
Aging		
Percent 65 Years and Over	9.9%	12.6%
Households		
Percent Married Couple with Own Children	35.4%	33.6%
Percent Living Alone	14.6%	15.3%

Population by Library-Defined Age Group, 2010



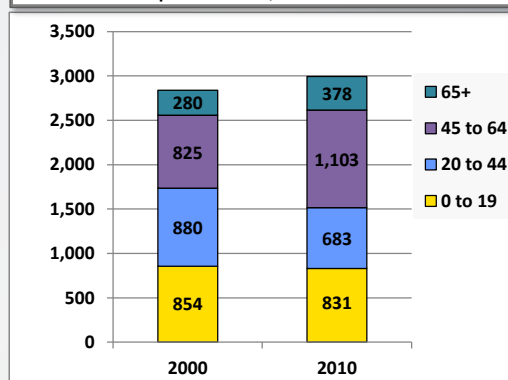
Race/Ethnicity by Library-Defined Age Group, 2010



Population Growth by Library-Defined Age Group, 2000 to 2010

Age Group	2010	Change	
		Numeric	Percent
Total	2,995	156	5.5%
85+	35	17	94.4%
65 to 84	343	81	30.9%
46 to 64	1,046	279	36.4%
33 to 45	460	-207	-31.0%
19 to 32	307	12	4.1%
14 to 18	277	57	25.9%
11 to 13	149	4	2.8%
6 to 10	182	-56	-23.5%
0 to 5	196	-31	-13.7%

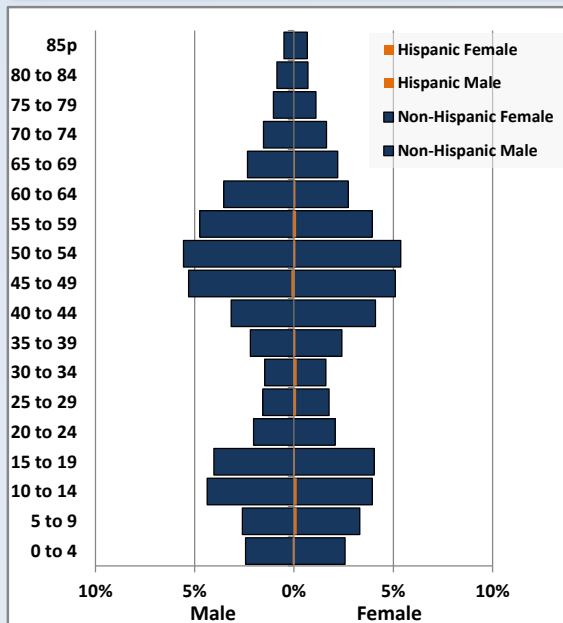
Population Total, 2000 and 2010



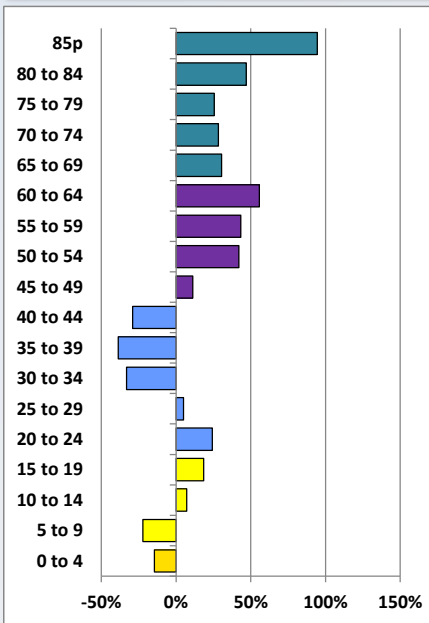
Demographic Profile

Village Library of Wrightstown

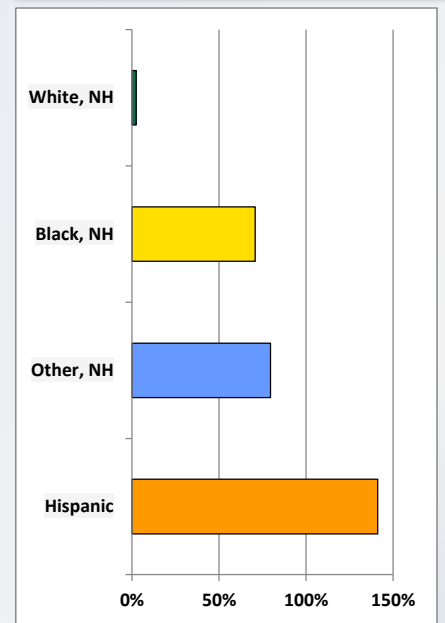
Population by 5-Year Age Cohorts



Pop Change by Age, 2000 to 2010

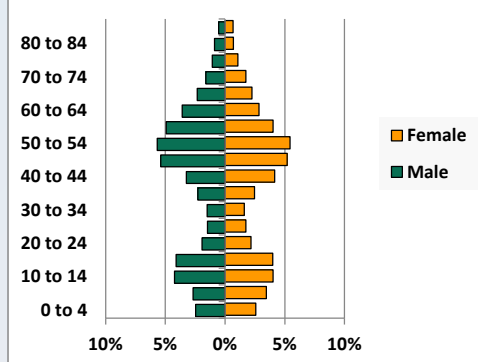


Pop Change by Race/Ethnicity, 2000 to 2010

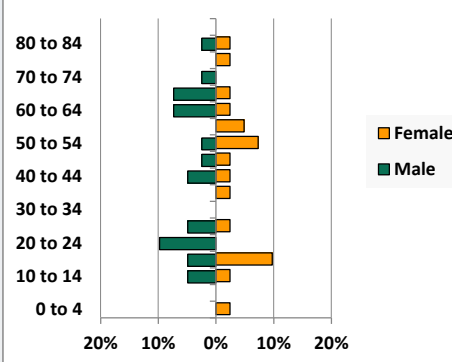


Population by Age, Race and Ethnicity 2010

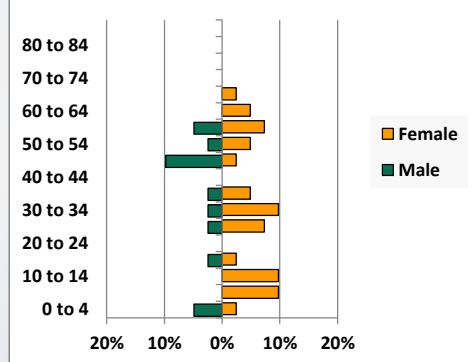
White, Not Hispanic



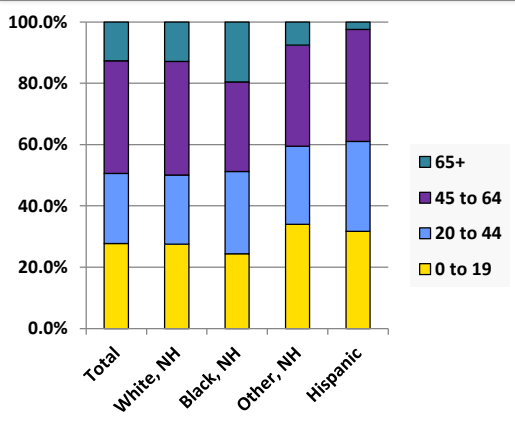
Black, Non-Hispanic



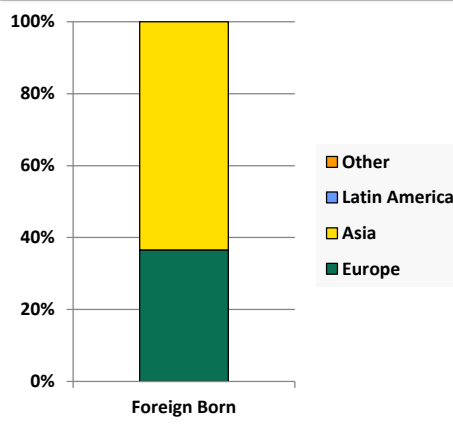
Hispanic



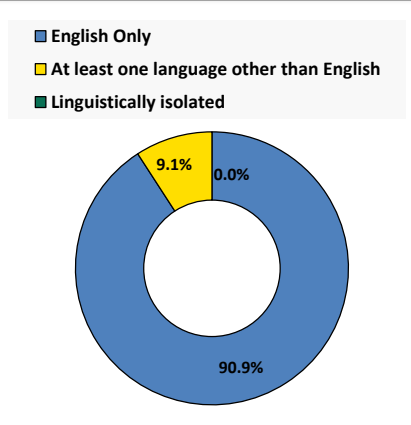
Age by Race and Ethnicity, 2010



Foreign Born, 2010



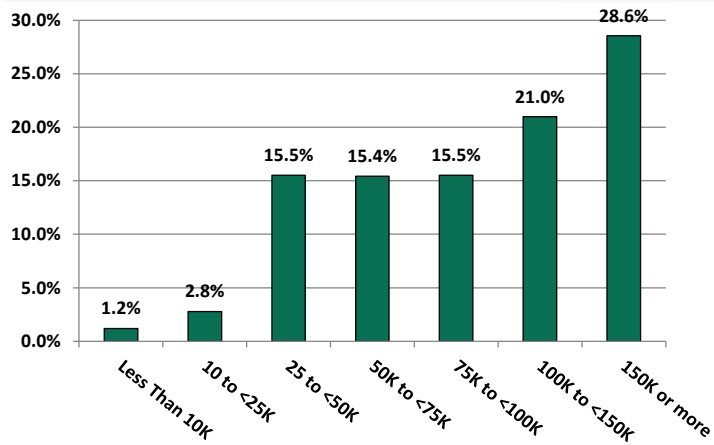
Household Language, 2010



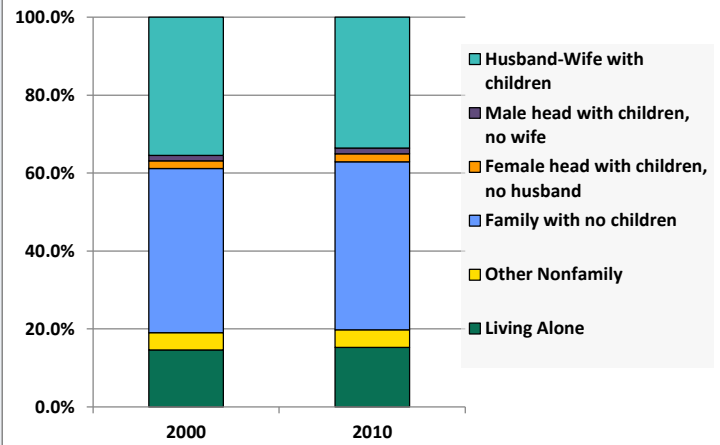
Demographic Profile

Village Library of Wrightstown

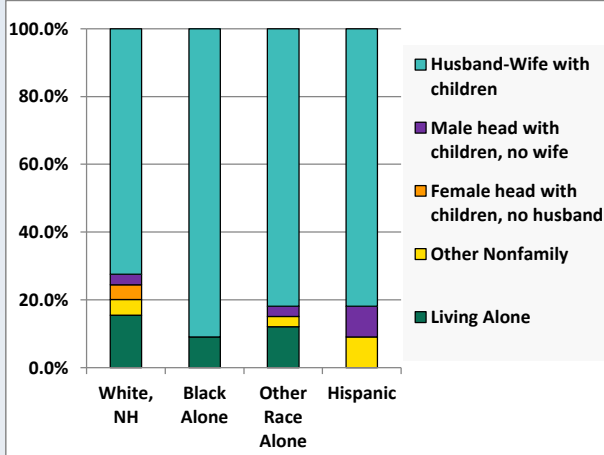
Household Income Distribution, 2008-2012



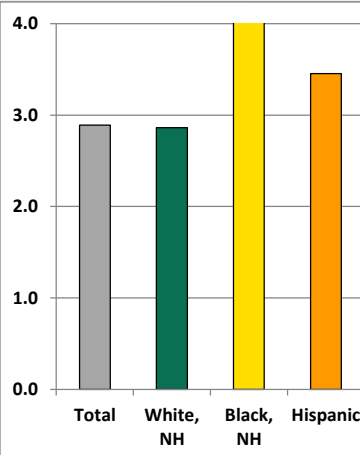
Household Type, 2000 and 2010



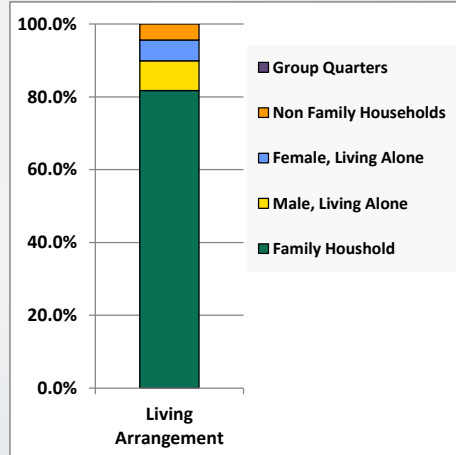
Household Type by Race/Ethnicity, 2010



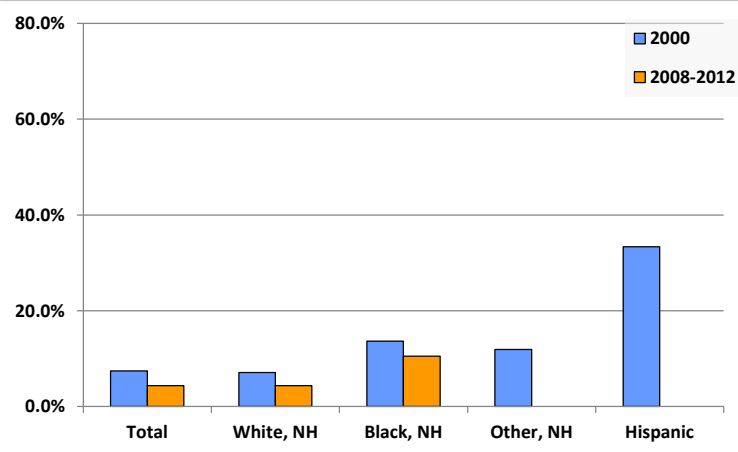
Average Household Size, 2010



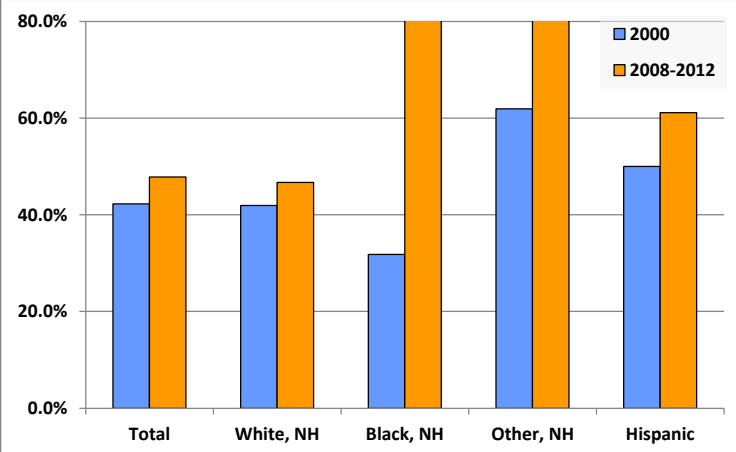
Living Arrangements 65+, 2008-2012



Percent of Adults that Did Not Complete High School



Percent of Adults Who Attained a Bachelor's Degree or Higher



Reference Data

Village Library of Wrightstown

					Detail for Other, Non-Hispanic					Hispanic or Latino
	Total Population	White, Non-Hispanic	Black, Non-Hispanic	Other, Non-Hispanic	AIAN	Asian	NHOPI	Some Other Race	Two or More Races	
A. Total Population										
2000 Total	2,839	2,739	24	59	1	43	0	2	13	17
2000 pct of Total	100.0%	96.5%	0.8%	2.1%	0.0%	1.5%	0.0%	0.1%	0.5%	0.6%
2010 Total	2,995	2,807	41	106	4	83	0	2	17	41
2010 pct of Total	100.0%	93.7%	1.4%	3.5%	0.1%	2.8%	0.0%	0.1%	0.6%	1.4%
B. Population by Major Age Groups by Race and Ethnicity										
2000										
0-19	854	821	4	25	0	17	0	0	8	4
20-64	1,705	1,645	17	31	1	23	0	2	5	12
65+	280	273	3	3	0	3	0	0	0	1
85+	18	17	1	0	0	0	0	0	0	0
2010										
0-19	831	772	10	36	2	21	0	2	11	13
20-64	1,786	1,674	23	62	2	54	0	0	6	27
65+	378	361	8	8	0	8	0	0	0	1
85+	35	34	0	1	0	1	0	0	0	0
C. Age Mix for Each Racial and Ethnic Group										
2000										
0-19	30.1%	30.0%	16.7%	42.4%	0.0%	39.5%	0.0%	0.0%	61.5%	23.5%
20-64	60.1%	60.1%	70.8%	52.5%	100.0%	53.5%	0.0%	100.0%	38.5%	70.6%
65+	9.9%	10.0%	12.5%	5.1%	0.0%	7.0%	0.0%	0.0%	0.0%	5.9%
85+	0.6%	0.6%	4.2%	0.0%	0.0%	0.0%	0.0%	0.0%	0.0%	0.0%
2010										
0-19	27.7%	27.5%	24.4%	34.0%	50.0%	25.3%	0.0%	100.0%	64.7%	31.7%
20-64	59.6%	59.6%	56.1%	58.5%	50.0%	65.1%	0.0%	0.0%	35.3%	65.9%
65+	12.6%	12.9%	19.5%	7.5%	0.0%	9.6%	0.0%	0.0%	0.0%	2.4%
85+	1.2%	1.2%	0.0%	0.9%	0.0%	1.2%	0.0%	0.0%	0.0%	0.0%
D. Racial and Ethnic Composition of Each Age Group										
2000										
0-19	100.0%	96.1%	0.5%	2.9%	0.0%	2.0%	0.0%	0.0%	0.9%	0.5%
20-64	100.0%	96.5%	1.0%	1.8%	0.1%	1.3%	0.0%	0.1%	0.3%	0.7%
65+	100.0%	97.5%	1.1%	1.1%	0.0%	1.1%	0.0%	0.0%	0.0%	0.4%
85+	100.0%	94.4%	5.6%	0.0%	0.0%	0.0%	0.0%	0.0%	0.0%	0.0%
2010										
0-19	100.0%	92.9%	1.2%	4.3%	0.2%	2.5%	0.0%	0.2%	1.3%	1.6%
20-64	100.0%	93.7%	1.3%	3.5%	0.1%	3.0%	0.0%	0.0%	0.3%	1.5%
65+	100.0%	95.5%	2.1%	2.1%	0.0%	2.1%	0.0%	0.0%	0.0%	0.3%
85+	100.0%	97.1%	0.0%	2.9%	0.0%	2.9%	0.0%	0.0%	0.0%	0.0%
E. Population Growth										
2000-2010, Change										
0-19	-23	-49	6	11	2	4	0	2	3	9
20-64	81	29	6	31	1	31	0	-2	1	15
65+	98	88	5	5	0	5	0	0	0	0
85+	17	17	-1	1	0	1	0	0	0	0
Total	156	68	17	47	3	40	0	0	4	24
2000-2010, Pct Change										
0-19	-2.7%	-6.0%	150.0%	44.0%	0.0%	23.5%	0.0%	0.0%	37.5%	225.0%
20-64	4.8%	1.8%	35.3%	100.0%	100.0%	134.8%	0.0%	-100.0%	20.0%	125.0%
65+	35.0%	32.2%	166.7%	166.7%	0.0%	166.7%	0.0%	0.0%	0.0%	0.0%
85+	94.4%	100.0%	-100.0%	0.0%	0.0%	0.0%	0.0%	0.0%	0.0%	0.0%
Total	5.5%	2.5%	70.8%	79.7%	300.0%	93.0%	0.0%	0.0%	30.8%	141.2%

Source: Decennial Census 2010, 2000, American Community Survey 2008-2012

Prepared for the Pennsylvania State Library by The Pennsylvania State Data Center, 9/2014

Reference Data

Village Library of Wrightstown

					Detail for Other, Non-Hispanic					Hispanic or Latino
	Total Population	White, Non-Hispanic	Black, Non-Hispanic	Other, Non-Hispanic	AIAN	Asian	NHOPI	Some Other Race	Two or More Races	
F. Population by Library-Defined Age Groups, 2010										
0-5	196	184	1	8	0	2	0	1	5	3
6-10	182	169	0	8	0	6	0	1	1	5
11-13	149	138	3	7	1	3	0	0	3	1
14-18	277	256	5	12	1	9	0	0	2	4
19-32	307	278	8	15	0	13	0	0	2	6
33-45	460	432	4	17	1	16	0	0	0	7
46-64	1,046	989	12	31	1	26	0	0	4	14
65-84	343	327	8	7	0	7	0	0	0	1
85+	35	34	0	1	0	1	0	0	0	0
Total	2,995	2,807	41	106	4	83	0	2	17	41
G. Population by 5-Year Age Cohorts, 2010										
0-4	153	141	1	8	0	2	0	1	5	3
5-9	181	172	0	5	0	3	0	1	1	4
10-14	253	232	3	14	1	10	0	0	3	4
15-19	244	227	6	9	1	6	0	0	2	2
20-24	123	115	4	4	0	4	0	0	0	0
25-29	104	90	3	7	0	5	0	0	2	4
30-34	97	87	0	5	0	5	0	0	0	5
35-39	141	133	1	4	0	4	0	0	0	3
40-44	218	208	3	7	0	7	0	0	0	0
45-49	317	297	2	13	1	11	0	0	1	5
50-54	331	312	4	12	0	11	0	0	1	3
55-59	265	251	2	7	1	5	0	0	1	5
60-64	190	181	4	3	0	2	0	0	1	2
65-69	137	128	4	4	0	4	0	0	0	1
70-74	95	94	1	0	0	0	0	0	0	0
75-79	64	60	1	3	0	3	0	0	0	0
80-84	47	45	2	0	0	0	0	0	0	0
85-89	27	26	0	1	0	1	0	0	0	0
90-94	8	8	0	0	0	0	0	0	0	0
95-99	0	0	0	0	0	0	0	0	0	0
100+	0	0	0	0	0	0	0	0	0	0
Total	2,995	2,807	41	106	4	83	0	2	17	41

Source: Decennial Census 2010, 2000, American Community Survey 2008-2012

Prepared for the Pennsylvania State Library by The Pennsylvania State Data Center, 9/2014

Reference Data

Village Library of Wrightstown

H. Income Distribution, 2008-2012

Range (in thousands)	Households	Pct of Total
<\$10K	13	1.2%
\$10K to <\$25K	30	2.8%
\$25K to <\$50K	168	15.5%
\$50K to <\$75K	167	15.4%
\$75K to <\$100K	168	15.5%
\$100K to <\$150K	227	21.0%
\$150K+	309	28.6%

I. Household Type, 2010

Household Type	2000	2000pct	2010	2010pct
Total Households	971	100.0%	1,036	100.0%
Family Households	786	80.9%	831	80.2%
Husband-wife, no children w/children	344	35.4%	348	33.6%
Female head, no husband, w/ children	19	2.0%	21	2.0%
Male head, no wife, w/ children	14	1.4%	15	1.4%
Without children	409	42.1%	447	43.1%
Nonfamily households	185	19.1%	205	19.8%
Living alone	142	14.6%	158	15.3%
Other nonfamily	43	4.4%	47	4.5%

J. Household Type by Race and Ethnicity, 2008-2012

Household Type	White, NH	Black, NH	Other, NH	Hispanic
Total Households	986	11	33	11
Husband wife family	72.4%	90.9%	81.8%	81.8%
Family with male head, no wife	3.1%	0.0%	3.0%	9.1%
family with female head, no husband	4.4%	0.0%	0.0%	0.0%
Living alone	15.5%	9.1%	12.1%	0.0%
Other nonfamily	4.6%	0.0%	3.0%	9.1%

K. Poverty, 2008-2012

Families	Poverty	PA
All families	0.6%	9.1%
Families w/ related children	1.3%	15.3%
Female householder, no husband present	6.4%	28.8%
Female householder, no husband present, w/ related children	10.6%	39.2%
All people	1.5%	13.1%
Under 18 years	0.8%	18.4%
18 to 64 years	1.1%	12.3%
65 years and over	4.2%	8.4%

L. Educational Attainment by Race and Ethnicity, 2008-2012

Education Level	White, NH	Black	Other	Hispanic	Total
Population 25 years and over	2,047	19	38	18	2,121
Less than high school	4.4%	10.5%	0%	0.0%	4.3%
High school graduate (includes equivalency)	29.0%	0.0%	0%	0.0%	28.0%
Some college or associates degree	19.9%	0.0%	18%	38.9%	19.8%
Bachelors degree or higher	46.7%	89.5%	82%	61.1%	47.9%

M. Occupation, 2008-2012

Occupation	Estimate	Percent
Civilian population age 16 years and over	1,650	100.0%
Management, professional, and related occupations	810	49.1%
Service occupations	176	10.7%
Sales and office occupations	336	20.4%
Farming, fishing, and forestry occupations	0	0.0%
Construction, extraction, maintenance, and repair occupations	115	7.0%
Production, transportation, and material moving occupations	213	12.9%

N. Class of Worker, 2008-2012

Occupation	Estimate	Percent
Civilian population age 16 years and over	1,650	100.0%
Private, for profit, wage and salary employee	1,062	64.4%
Private, not for profit, wage and salary employee	92	5.6%
Private, for profit, wage and salary self-employed in own business	131	7.9%
Government workers	200	12.1%
Self-employed in own not incorporated business	165	10.0%
Unpaid family workers in family business	0	0.0%