

Demographic Profile Waterford Public Library

Population Growth: The total population of the Waterford Public Library service area increased by 4.7 percent over the past decade to 1,517; this growth rate was higher than the statewide rate of 3.4 percent.

Age and Sex: In 2010, the Waterford Public Library service area had a total population of 1,517 - 723 males (47.7 percent) and 794 females (52.3 percent). The age structure of the population in 2010 was as follows: 26.0 percent of the population was under 20 years old, 57.9 percent was 20 to 64 years old and 16.1 percent was 65 years or older.

Race and Ethnicity: For people reporting one race alone, not of Hispanic ethnicity, 97.8 percent were White; .4 percent were Black or African American; 1.0 percent were Other Race Alone.¹ A total of 13 or .9 percent of the population were Hispanic.²

Households: In 2010, there were 623 households in the Waterford Public Library service area. The average household size was 2.43 people. Families made up 65.7 percent of the households. This figure includes both families with (29.2 percent) and without (36.4 percent) children. Of families with children less than 18 years old, 17.3 percent were married-couple families, 8.5 percent were female householder families with no husband present, and the remaining (3.4 percent) were male-headed households with no wife present.

Education: The educational attainment of the population 25 years and over was lower in the Waterford Public Library service area than in Pennsylvania. During the period 2008-2012, 20.7 percent of residents had earned a Bachelor's degree or higher, compared with 27.0 percent statewide. A total of 100 or 11.1 percent had not completed high school, compared with 11.7 percent for the commonwealth as a whole.

Income and Poverty: Households with incomes of \$25,000 to \$49,999 (29.9 percent) made up the largest percent of households in the Waterford Public Library service area in 2008-2012. For comparison, 24.4 percent of commonwealth households were in this range during the period.

In 2008-2012, the overall poverty rate for the Waterford Public Library service area was lower than Pennsylvania (10.2 percent compared to 13.1 percent). The poverty rate for the population under 18 years of age was 17.5 percent, compared with 9.4 percent of people 18 to 64 years and 3.4 percent for those aged 65 years and over. A total of 31 or 8.9 percent of all families had incomes below poverty level. In 2008-2012, 19.1 percent of families with related children and 57.1 percent of families with a female householder and no husband with related children present had incomes below the poverty level.

Class of Worker and Occupation: In 2008-2012, 82.3 percent of the workforce was private wage and salary workers; 12.6 percent were federal, state, or local government workers; and 5.1 percent were self-employed in their own (not incorporated) business.

The top occupation group for the civilian employed population 16 years and over in the Waterford Public Library service area in 2008-2012 was Service-related (25.1 percent).

¹ Other race includes those who identified themselves as American Indian/Alaska Native, Asian, Native Hawaiian/Other Pacific Islander, Some Other Race and Two or More Races on the 2010 Census form.

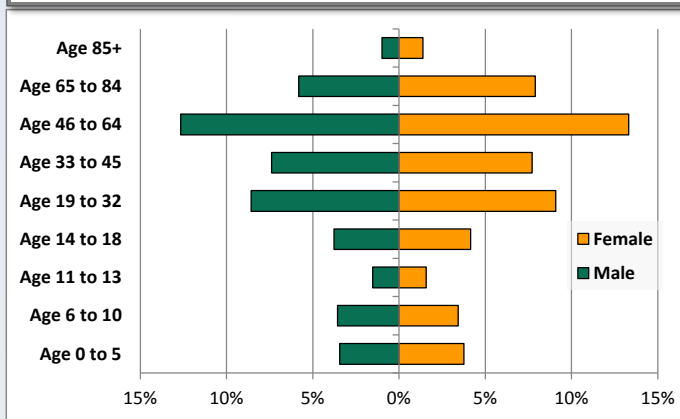
² People of Hispanic origin may be of any race.

Demographic Profile

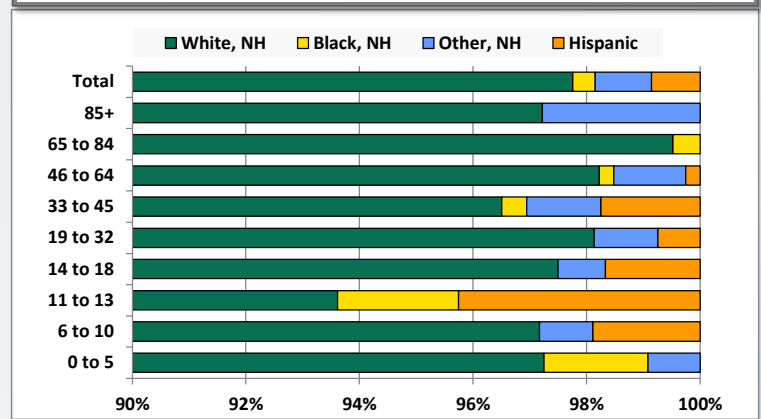
Waterford Public Library

Key Indicators		
	2000	2010
Population Growth		
Total Population	1,449	1,517
10-Year Growth	N/A	4.7%
Diversity		
White Alone, Non-Hispanic	98.5%	97.8%
Black Alone, Non-Hispanic	0.2%	0.4%
Other Race Alone, Non-Hispanic	0.8%	1.0%
Percent Hispanic	0.5%	0.9%
Aging		
Percent 65 Years and Over	13.4%	16.1%
Households		
Percent Married Couple with Own Children	24.9%	17.3%
Percent Living Alone	21.7%	29.5%

Population by Library-Defined Age Group, 2010



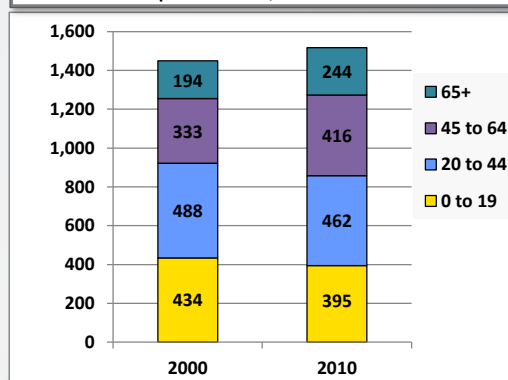
Race/Ethnicity by Library-Defined Age Group, 2010



Population Growth by Library-Defined Age Group, 2000 to 2010

Age Group	2010	Change	
		Numeric	Percent
Total	1,517	68	4.7%
85+	36	20	125.0%
65 to 84	208	30	16.9%
46 to 64	394	86	27.9%
33 to 45	229	-66	-22.4%
19 to 32	268	35	15.0%
14 to 18	120	-15	-11.1%
11 to 13	47	-18	-27.7%
6 to 10	106	-6	-5.4%
0 to 5	109	2	1.9%

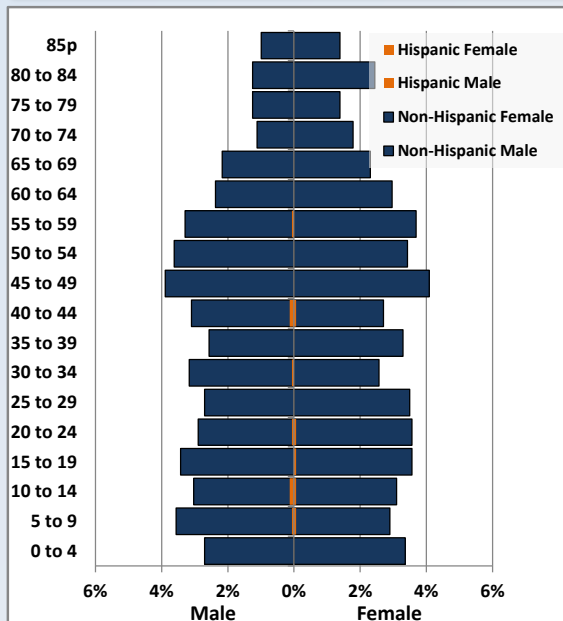
Population Total, 2000 and 2010



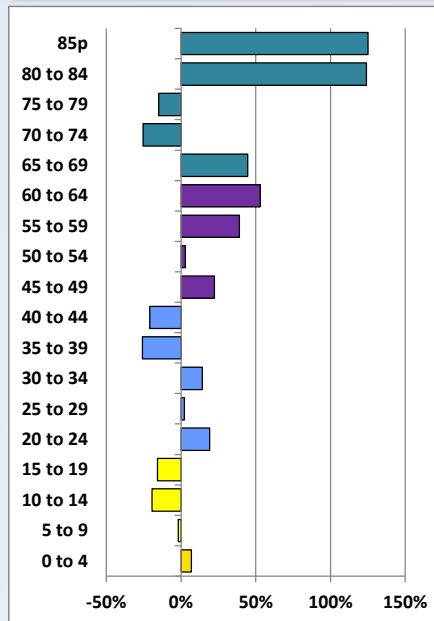
Demographic Profile

Waterford Public Library

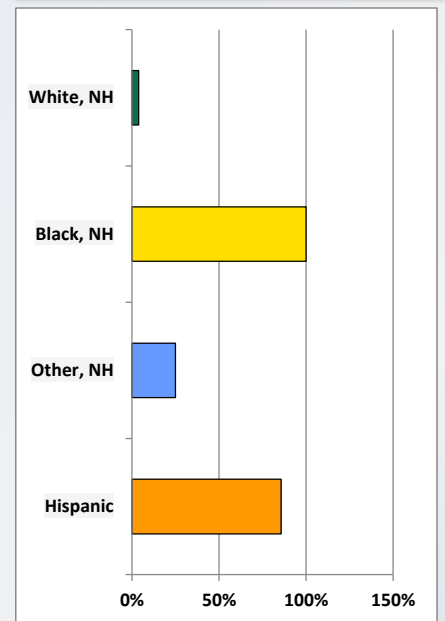
Population by 5-Year Age Cohorts



Pop Change by Age, 2000 to 2010

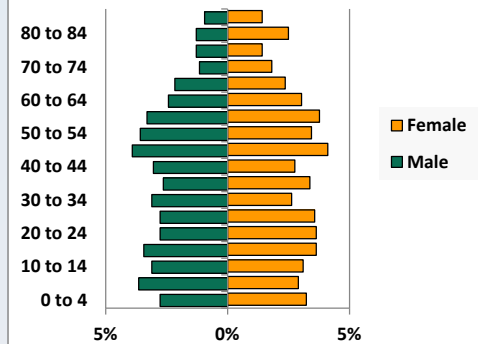


Pop Change by Race/Ethnicity, 2000 to 2010

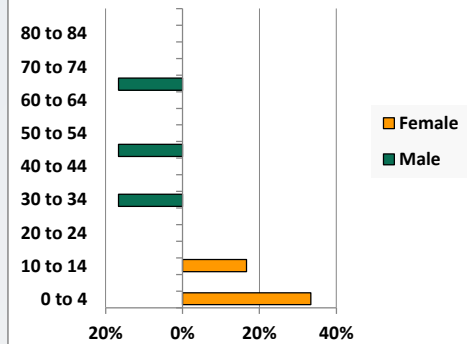


Population by Age, Race and Ethnicity 2010

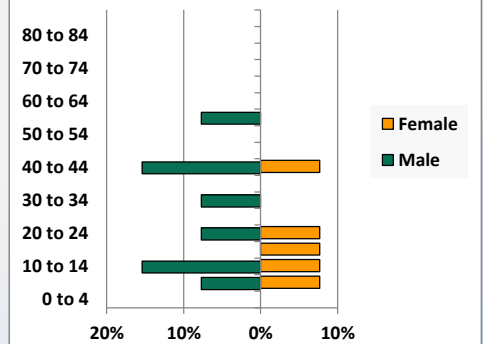
White, Not Hispanic



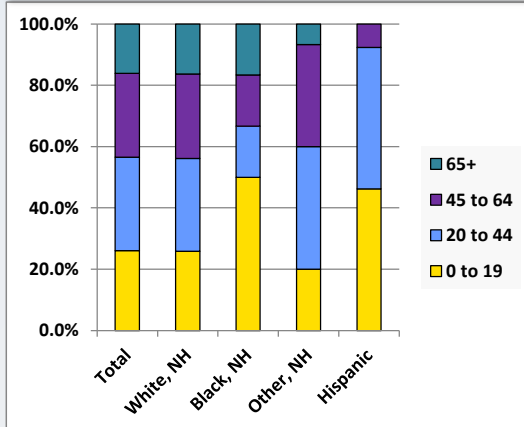
Black, Non-Hispanic



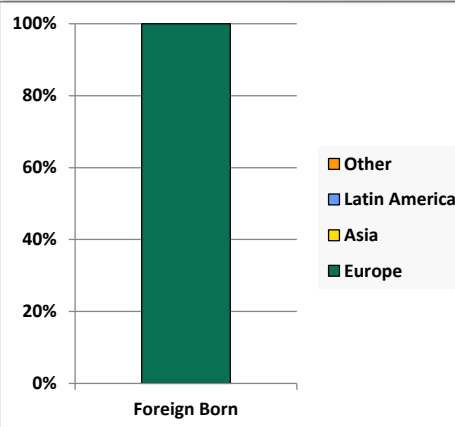
Hispanic



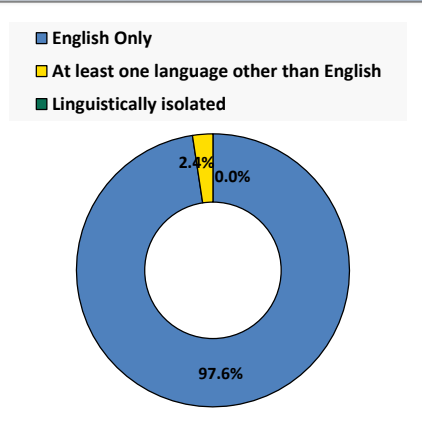
Age by Race and Ethnicity, 2010



Foreign Born, 2010



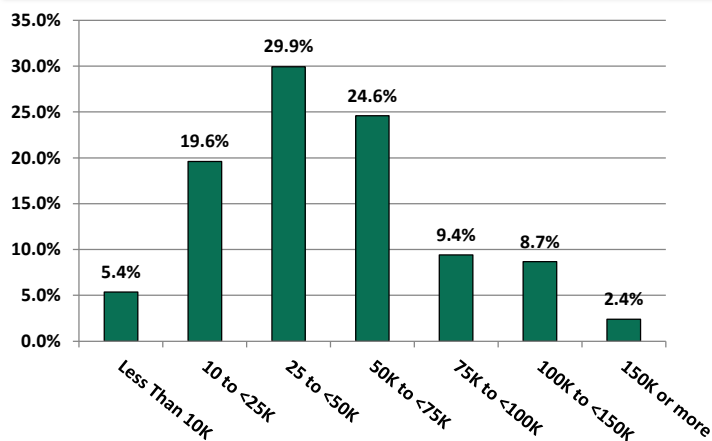
Household Language, 2010



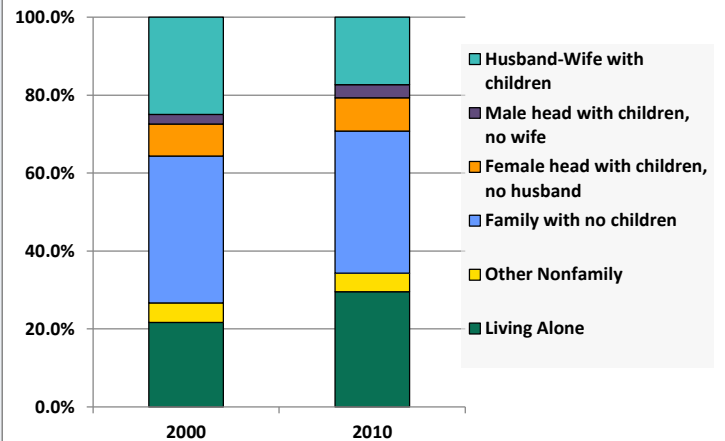
Demographic Profile

Waterford Public Library

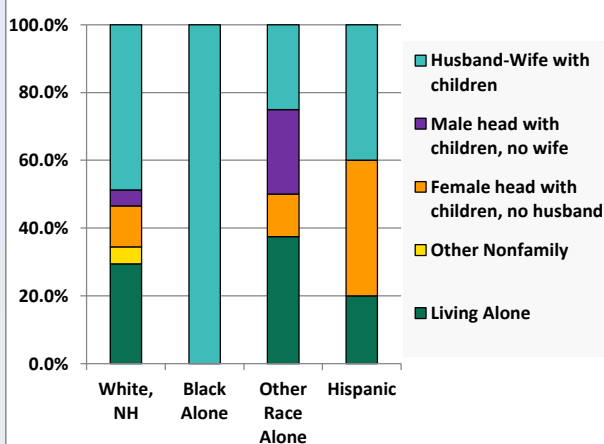
Household Income Distribution, 2008-2012



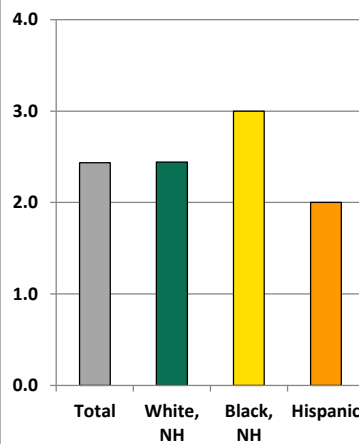
Household Type, 2000 and 2010



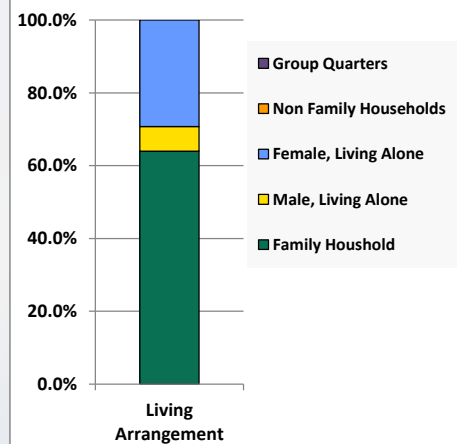
Household Type by Race/Ethnicity, 2010



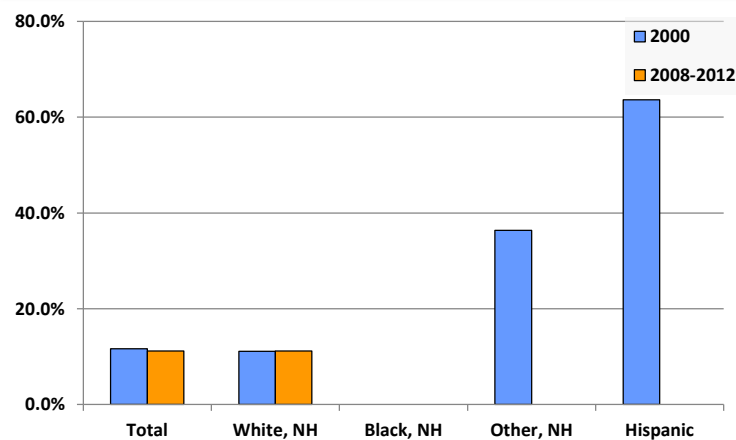
Average Household Size, 2010



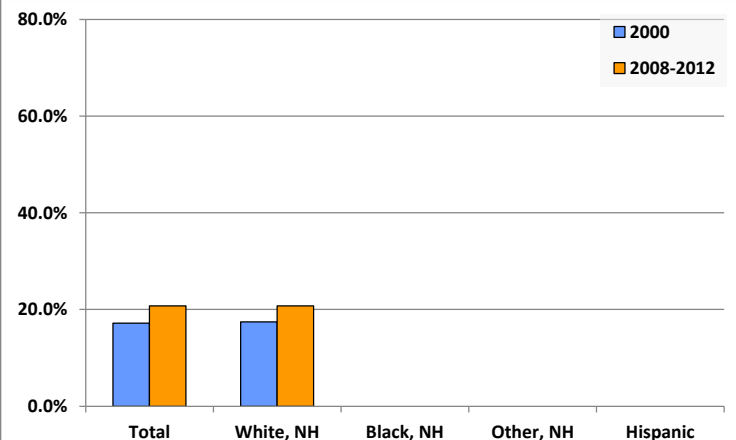
Living Arrangements 65+, 2008-2012



Percent of Adults that Did Not Complete High School



Percent of Adults Who Attained a Bachelor's Degree or Higher



Reference Data

Waterford Public Library

	Total Population	White, Non- Hispanic	Black, Non- Hispanic	Other, Non- Hispanic	Detail for Other, Non-Hispanic					Hispanic or Latino
					AIAN	Asian	NHOPI	Some Other Race	Two or More Races	
A. Total Population										
2000 Total	1,449	1,427	3	12	3	1	0	1	7	7
2000 pct of Total	100.0%	98.5%	0.2%	0.8%	0.2%	0.1%	0.0%	0.1%	0.5%	0.5%
2010 Total	1,517	1,483	6	15	3	4	0	0	8	13
2010 pct of Total	100.0%	97.8%	0.4%	1.0%	0.2%	0.3%	0.0%	0.0%	0.5%	0.9%
B. Population by Major Age Groups by Race and Ethnicity										
2000										
0-19	434	423	2	6	1	0	0	1	4	3
20-64	821	810	1	6	2	1	0	0	3	4
65+	194	194	0	0	0	0	0	0	0	0
85+	16	16	0	0	0	0	0	0	0	0
2010										
0-19	395	383	3	3	0	0	0	0	3	6
20-64	878	858	2	11	3	4	0	0	4	7
65+	244	242	1	1	0	0	0	0	1	0
85+	36	35	0	1	0	0	0	0	1	0
C. Age Mix for Each Racial and Ethnic Group										
2000										
0-19	30.0%	29.6%	66.7%	50.0%	33.3%	0.0%	0.0%	100.0%	57.1%	42.9%
20-64	56.7%	56.8%	33.3%	50.0%	66.7%	100.0%	0.0%	0.0%	42.9%	57.1%
65+	13.4%	13.6%	0.0%	0.0%	0.0%	0.0%	0.0%	0.0%	0.0%	0.0%
85+	1.1%	1.1%	0.0%	0.0%	0.0%	0.0%	0.0%	0.0%	0.0%	0.0%
2010										
0-19	26.0%	25.8%	50.0%	20.0%	0.0%	0.0%	0.0%	0.0%	37.5%	46.2%
20-64	57.9%	57.9%	33.3%	73.3%	100.0%	100.0%	0.0%	0.0%	50.0%	53.8%
65+	16.1%	16.3%	16.7%	6.7%	0.0%	0.0%	0.0%	0.0%	12.5%	0.0%
85+	2.4%	2.4%	0.0%	6.7%	0.0%	0.0%	0.0%	0.0%	12.5%	0.0%
D. Racial and Ethnic Composition of Each Age Group										
2000										
0-19	100.0%	97.5%	0.5%	1.4%	0.2%	0.0%	0.0%	0.2%	0.9%	0.7%
20-64	100.0%	98.7%	0.1%	0.7%	0.2%	0.1%	0.0%	0.0%	0.4%	0.5%
65+	100.0%	100.0%	0.0%	0.0%	0.0%	0.0%	0.0%	0.0%	0.0%	0.0%
85+	100.0%	100.0%	0.0%	0.0%	0.0%	0.0%	0.0%	0.0%	0.0%	0.0%
2010										
0-19	100.0%	97.0%	0.8%	0.8%	0.0%	0.0%	0.0%	0.0%	0.8%	1.5%
20-64	100.0%	97.7%	0.2%	1.3%	0.3%	0.5%	0.0%	0.0%	0.5%	0.8%
65+	100.0%	99.2%	0.4%	0.4%	0.0%	0.0%	0.0%	0.0%	0.4%	0.0%
85+	100.0%	97.2%	0.0%	2.8%	0.0%	0.0%	0.0%	0.0%	2.8%	0.0%
E. Population Growth										
2000-2010, Change										
0-19	-39	-40	1	-3	-1	0	0	-1	-1	3
20-64	57	48	1	5	1	3	0	0	1	3
65+	50	48	1	1	0	0	0	0	1	0
85+	20	19	0	1	0	0	0	0	1	0
Total	68	56	3	3	0	3	0	-1	1	6
2000-2010, Pct Change										
0-19	-9.0%	-9.5%	50.0%	-50.0%	-100.0%	0.0%	0.0%	-100.0%	-25.0%	100.0%
20-64	6.9%	5.9%	100.0%	83.3%	50.0%	300.0%	0.0%	0.0%	33.3%	75.0%
65+	25.8%	24.7%	0.0%	0.0%	0.0%	0.0%	0.0%	0.0%	0.0%	0.0%
85+	125.0%	118.8%	0.0%	0.0%	0.0%	0.0%	0.0%	0.0%	0.0%	0.0%
Total	4.7%	3.9%	100.0%	25.0%	0.0%	300.0%	0.0%	-100.0%	14.3%	85.7%

Source: Decennial Census 2010, 2000, American Community Survey 2008-2012

Prepared for the Pennsylvania State Library by The Pennsylvania State Data Center, 9/2014

Reference Data

Waterford Public Library

	Total Population	White, Non- Hispanic	Black, Non- Hispanic	Other, Non- Hispanic	Detail for Other, Non-Hispanic					Hispanic or Latino	
					AIAN	Asian	NHOPI	Some Other Race	Two or More Races		
F. Population by Library-Defined Age Groups, 2010											
0-5	109	106	2	1	0	0	0	0	1	0	
6-10	106	103	0	1	0	0	0	0	1	2	
11-13	47	44	1	0	0	0	0	0	0	2	
14-18	120	117	0	1	0	0	0	0	1	2	
19-32	268	263	0	3	0	2	0	0	1	2	
33-45	229	221	1	3	2	1	0	0	0	4	
46-64	394	387	1	5	1	1	0	0	3	1	
65-84	208	207	1	0	0	0	0	0	0	0	
85+	36	35	0	1	0	0	0	0	1	0	
Total	1,517	1,483	6	15	3	4	0	0	8	13	
G. Population by 5-Year Age Cohorts, 2010											
0-4	92	89	2	1	0	0	0	0	1	0	
5-9	100	97	0	1	0	0	0	0	1	2	
10-14	96	92	1	0	0	0	0	0	0	3	
15-19	107	105	0	1	0	0	0	0	1	1	
20-24	100	95	0	3	0	2	0	0	1	2	
25-29	94	94	0	0	0	0	0	0	0	0	
30-34	88	85	1	1	0	1	0	0	0	1	
35-39	89	89	0	0	0	0	0	0	0	0	
40-44	91	86	0	2	2	0	0	0	0	3	
45-49	121	119	1	1	0	0	0	0	1	0	
50-54	107	104	0	3	0	1	0	0	2	0	
55-59	107	105	0	1	1	0	0	0	0	1	
60-64	81	81	0	0	0	0	0	0	0	0	
65-69	68	67	1	0	0	0	0	0	0	0	
70-74	44	44	0	0	0	0	0	0	0	0	
75-79	40	40	0	0	0	0	0	0	0	0	
80-84	56	56	0	0	0	0	0	0	0	0	
85-89	25	24	0	1	0	0	0	0	1	0	
90-94	10	10	0	0	0	0	0	0	0	0	
95-99	1	1	0	0	0	0	0	0	0	0	
100+	0	0	0	0	0	0	0	0	0	0	
Total	1,517	1,483	6	15	3	4	0	0	8	13	

Source: Decennial Census 2010, 2000, American Community Survey 2008-2012

Prepared for the Pennsylvania State Library by The Pennsylvania State Data Center, 9/2014

Reference Data

Waterford Public Library

H. Income Distribution, 2008-2012

Range (in thousands)	Households	Pct of Total
<\$10K	29	5.4%
\$10K to <\$25K	106	19.6%
\$25K to <\$50K	162	29.9%
\$50K to <\$75K	133	24.6%
\$75K to <\$100K	51	9.4%
\$100K to <\$150K	47	8.7%
\$150K+	13	2.4%

I. Household Type, 2010

Household Type	2000	2000pct	2010	2010pct
Total Households	558	100.0%	623	100.0%
Family Households	409	73.3%	409	65.7%
Husband-wife, no children w/children	139	24.9%	108	17.3%
Female head, no husband, w/ children	46	8.2%	53	8.5%
Male head, no wife, w/ children	14	2.5%	21	3.4%
Without children	210	37.6%	227	36.4%
Nonfamily households	149	26.7%	214	34.3%
Living alone	121	21.7%	184	29.5%
Other nonfamily	28	5.0%	30	4.8%

J. Household Type by Race and Ethnicity, 2008-2012

Household Type	White, NH	Black, NH	Other, NH	Hispanic
Total Households	610	1	8	5
Husband wife family	48.7%	100.0%	25.0%	40.0%
Family with male head, no wife	4.8%	0.0%	25.0%	0.0%
family with female head, no husband	12.1%	0.0%	12.5%	40.0%
Living alone	29.5%	0.0%	37.5%	20.0%
Other nonfamily	4.9%	0.0%	0.0%	0.0%

K. Poverty, 2008-2012

Families	Poverty	PA
All families	8.9%	9.1%
Families w/ related children	19.1%	15.3%
Female householder, no husband present	32.7%	28.8%
Female householder, no husband present, w/ related children	57.1%	39.2%
All people	10.2%	13.1%
Under 18 years	17.5%	18.4%
18 to 64 years	9.4%	12.3%
65 years and over	3.4%	8.4%

L. Educational Attainment by Race and Ethnicity, 2008-2012

Education Level	White, NH	Black	Other	Hispanic	Total
Population 25 years and over	895	0	2	0	897
Less than high school	11.2%	0.0%	0%	0.0%	11.1%
High school graduate (includes equivalency)	43.4%	0.0%	0%	0.0%	43.3%
Some college or associates degree	24.7%	0.0%	100%	0.0%	24.9%
Bachelors degree or higher	20.8%	0.0%	0%	0.0%	20.7%

M. Occupation, 2008-2012

Occupation	Estimate	Percent
Civilian population age 16 years and over	666	100.0%
Management, professional, and related occupations	142	21.3%
Service occupations	167	25.1%
Sales and office occupations	160	24.0%
Farming, fishing, and forestry occupations	0	0.0%
Construction, extraction, maintenance, and repair occupations	81	12.2%
Production, transportation, and material moving occupations	116	17.4%

N. Class of Worker, 2008-2012

Occupation	Estimate	Percent
Civilian population age 16 years and over	666	100.0%
Private, for profit, wage and salary employee	488	73.3%
Private, not for profit, wage and salary employee	43	6.5%
Private, for profit, wage and salary self-employed in own business	17	2.6%
Government workers	84	12.6%
Self-employed in own not incorporated business	34	5.1%
Unpaid family workers in family business	0	0.0%