

Demographic Profile Wilcox Public Library

Population Growth: The total population of the Wilcox Public Library service area decreased by -5.6 percent over the past decade to 1,624; this decline rate was lower than the statewide rate of 3.4 percent.

Age and Sex: In 2010, the Wilcox Public Library service area had a total population of 1,624 - 844 males (52.0 percent) and 780 females (48.0 percent). The age structure of the population in 2010 was as follows: 20.4 percent of the population was under 20 years old, 63.5 percent was 20 to 64 years old and 16.1 percent was 65 years or older.

Race and Ethnicity: For people reporting one race alone, not of Hispanic ethnicity, 98.1 percent were White; .6 percent were Black or African American; 1.0 percent were Other Race Alone.¹ A total of 6 or .4 percent of the population were Hispanic.²

Households: In 2010, there were 687 households in the Wilcox Public Library service area. The average household size was 2.36 people. Families made up 67.5 percent of the households. This figure includes both families with (21.0 percent) and without (46.6 percent) children. Of families with children less than 18 years old, 16.2 percent were married-couple families, 2.9 percent were female householder families with no husband present, and the remaining (1.9 percent) were male-headed households with no wife present.

Education: The educational attainment of the population 25 years and over was lower in the Wilcox Public Library service area than in Pennsylvania. During the period 2008-2012, 15.1 percent of residents had earned a Bachelor's degree or higher, compared with 27.0 percent statewide. A total of 116 or 9.7 percent had not completed high school, compared with 11.7 percent for the commonwealth as a whole.

Income and Poverty: Households with incomes of \$25,000 to \$49,999 (27.8 percent) made up the largest percent of households in the Wilcox Public Library service area in 2008-2012. For comparison, 24.4 percent of commonwealth households were in this range during the period.

In 2008-2012, the overall poverty rate for the Wilcox Public Library service area was lower than Pennsylvania (5.7 percent compared to 13.1 percent). The poverty rate for the population under 18 years of age was 16.8 percent, compared with 3.7 percent of people 18 to 64 years and 2.7 percent for those aged 65 years and over. A total of 20 or 4.3 percent of all families had incomes below poverty level. In 2008-2012, 10.7 percent of families with related children and 48.1 percent of families with a female householder and no husband with related children present had incomes below the poverty level.

Class of Worker and Occupation: In 2008-2012, 78.1 percent of the workforce was private wage and salary workers; 16.4 percent were federal, state, or local government workers; and 5.5 percent were self-employed in their own (not incorporated) business.

The top occupation group for the civilian employed population 16 years and over in the Wilcox Public Library service area in 2008-2012 was Production (32.8 percent).

¹ Other race includes those who identified themselves as American Indian/Alaska Native, Asian, Native Hawaiian/Other Pacific Islander, Some Other Race and Two or More Races on the 2010 Census form.

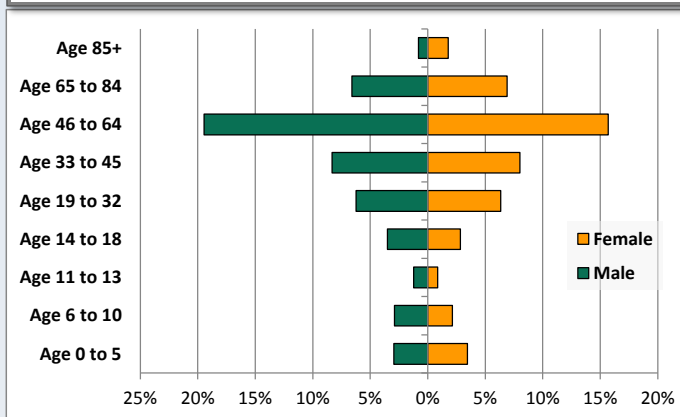
² People of Hispanic origin may be of any race.

Demographic Profile

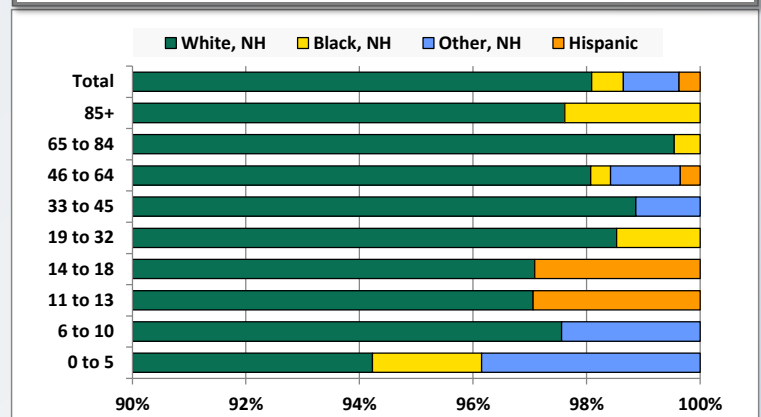
Wilcox Public Library

Key Indicators		
	2000	2010
Population Growth		
Total Population	1,721	1,624
10-Year Growth	N/A	-5.6%
Diversity		
White Alone, Non-Hispanic	99.3%	98.1%
Black Alone, Non-Hispanic	0.1%	0.6%
Other Race Alone, Non-Hispanic	0.3%	1.0%
Percent Hispanic	0.3%	0.4%
Aging		
Percent 65 Years and Over	15.5%	16.1%
Households		
Percent Married Couple with Own Children	25.0%	16.2%
Percent Living Alone	26.5%	26.2%

Population by Library-Defined Age Group, 2010



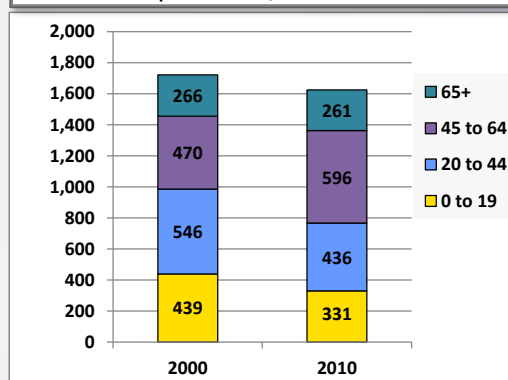
Race/Ethnicity by Library-Defined Age Group, 2010



Population Growth by Library-Defined Age Group, 2000 to 2010

Age Group	2010	Change	
		Numeric	Percent
Total	1,624	-97	-5.6%
85+	42	21	100.0%
65 to 84	219	-26	-10.6%
46 to 64	571	142	33.1%
33 to 45	265	-99	-27.2%
19 to 32	204	-41	-16.7%
14 to 18	103	-38	-27.0%
11 to 13	34	-31	-47.7%
6 to 10	82	-24	-22.6%
0 to 5	104	-1	-1.0%

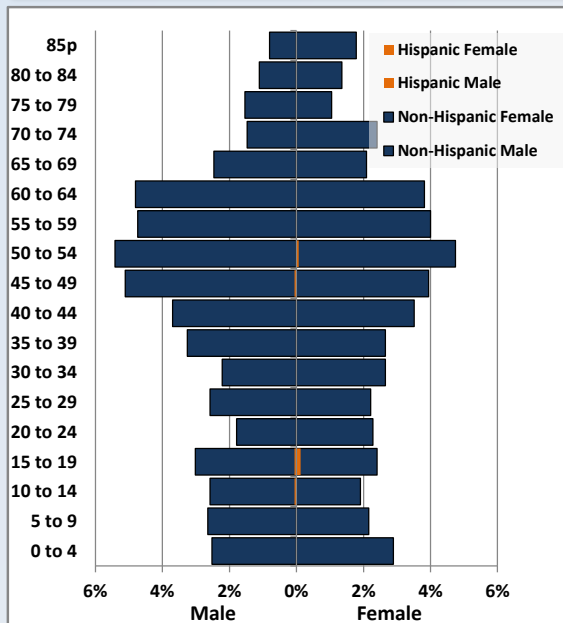
Population Total, 2000 and 2010



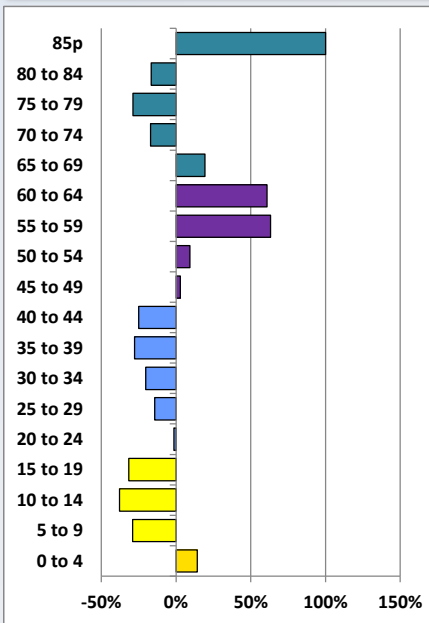
Demographic Profile

Wilcox Public Library

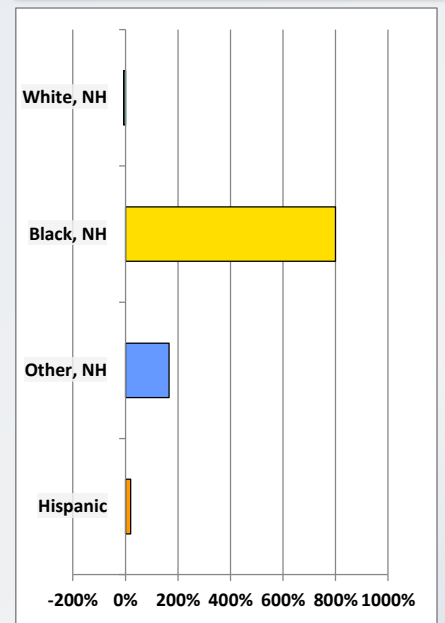
Population by 5-Year Age Cohorts



Pop Change by Age, 2000 to 2010

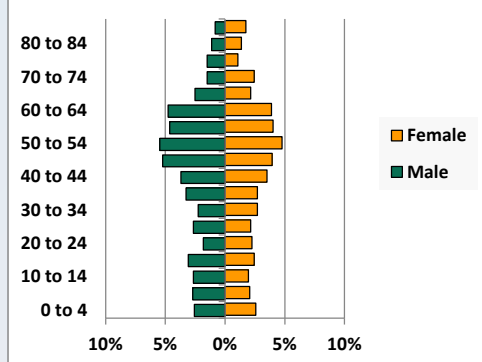


Pop Change by Race/Ethnicity, 2000 to 2010

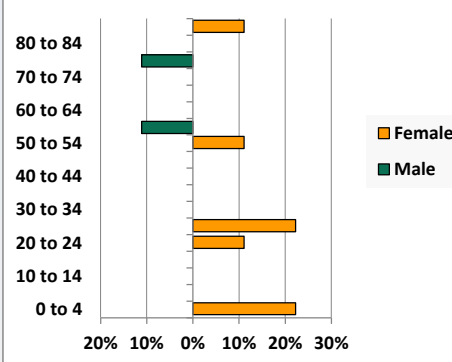


Population by Age, Race and Ethnicity 2010

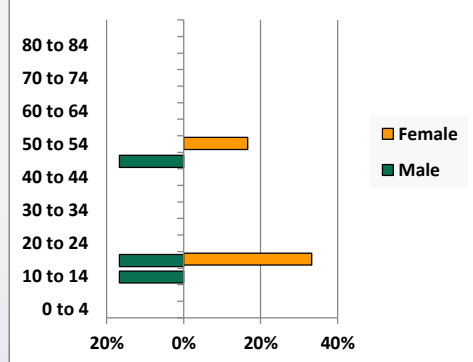
White, Not Hispanic



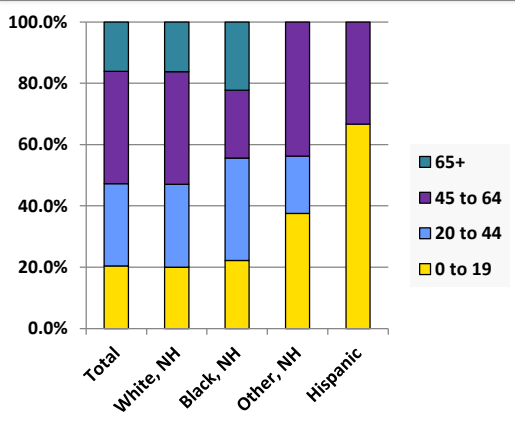
Black, Non-Hispanic



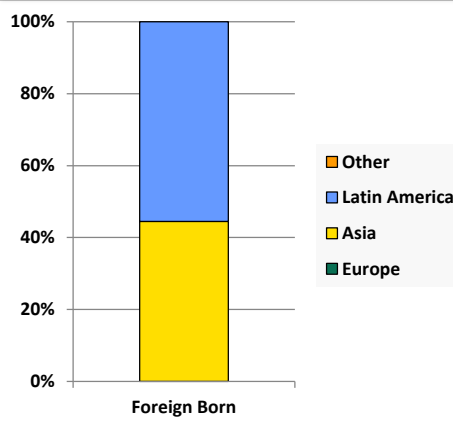
Hispanic



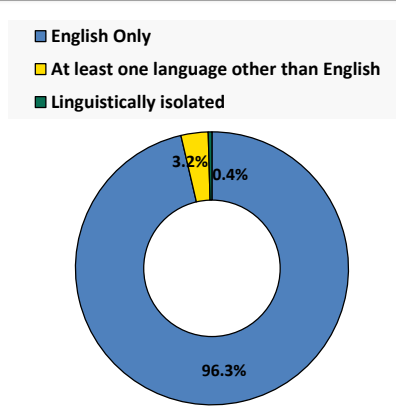
Age by Race and Ethnicity, 2010



Foreign Born, 2010



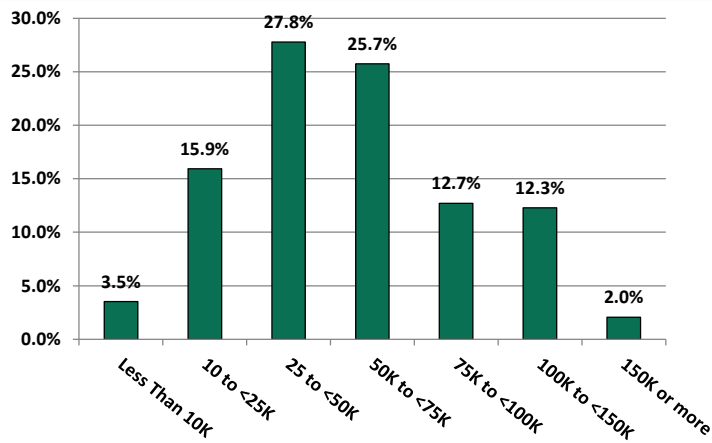
Household Language, 2010



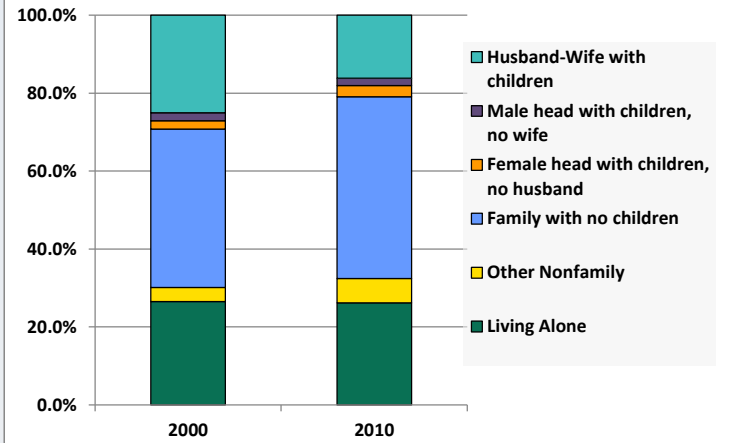
Demographic Profile

Wilcox Public Library

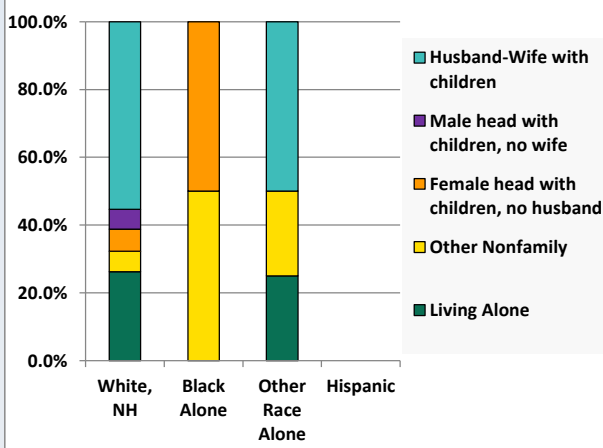
Household Income Distribution, 2008-2012



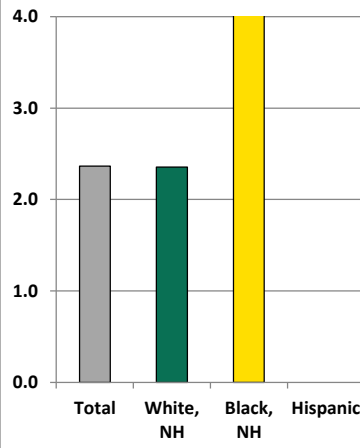
Household Type, 2000 and 2010



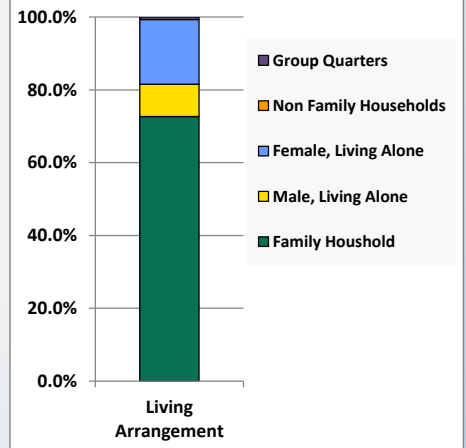
Household Type by Race/Ethnicity, 2010



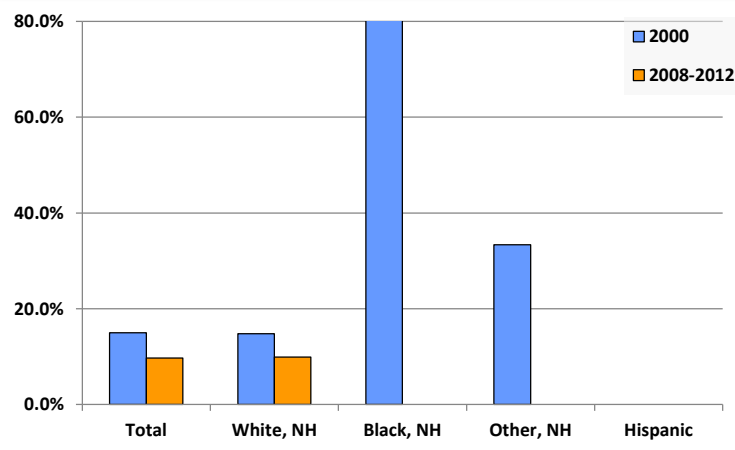
Average Household Size, 2010



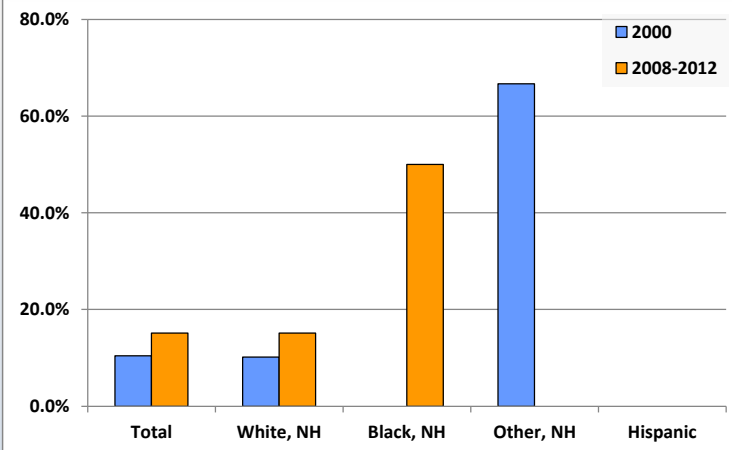
Living Arrangements 65+, 2008-2012



Percent of Adults that Did Not Complete High School



Percent of Adults Who Attained a Bachelor's Degree or Higher



Reference Data

Wilcox Public Library

	Total Population	White, Non- Hispanic	Black, Non- Hispanic	Other, Non- Hispanic	Detail for Other, Non-Hispanic					Hispanic or Latino
					AIAN	Asian	NHOPI	Some Other Race	Two or More Races	
A. Total Population										
2000 Total	1,721	1,709	1	6	2	0	0	1	3	5
2000 pct of Total	100.0%	99.3%	0.1%	0.3%	0.1%	0.0%	0.0%	0.1%	0.2%	0.3%
2010 Total	1,624	1,593	9	16	2	1	0	0	13	6
2010 pct of Total	100.0%	98.1%	0.6%	1.0%	0.1%	0.1%	0.0%	0.0%	0.8%	0.4%
B. Population by Major Age Groups by Race and Ethnicity										
2000										
0-19	439	437	0	1	0	0	0	0	1	1
20-64	1,016	1,007	1	4	2	0	0	1	1	4
65+	266	265	0	1	0	0	0	0	1	0
85+	21	21	0	0	0	0	0	0	0	0
2010										
0-19	331	319	2	6	0	0	0	0	6	4
20-64	1,032	1,015	5	10	2	1	0	0	7	2
65+	261	259	2	0	0	0	0	0	0	0
85+	42	41	1	0	0	0	0	0	0	0
C. Age Mix for Each Racial and Ethnic Group										
2000										
0-19	25.5%	25.6%	0.0%	16.7%	0.0%	0.0%	0.0%	0.0%	33.3%	20.0%
20-64	59.0%	58.9%	100.0%	66.7%	100.0%	0.0%	0.0%	100.0%	33.3%	80.0%
65+	15.5%	15.5%	0.0%	16.7%	0.0%	0.0%	0.0%	0.0%	33.3%	0.0%
85+	1.2%	1.2%	0.0%	0.0%	0.0%	0.0%	0.0%	0.0%	0.0%	0.0%
2010										
0-19	20.4%	20.0%	22.2%	37.5%	0.0%	0.0%	0.0%	0.0%	46.2%	66.7%
20-64	63.5%	63.7%	55.6%	62.5%	100.0%	100.0%	0.0%	0.0%	53.8%	33.3%
65+	16.1%	16.3%	22.2%	0.0%	0.0%	0.0%	0.0%	0.0%	0.0%	0.0%
85+	2.6%	2.6%	11.1%	0.0%	0.0%	0.0%	0.0%	0.0%	0.0%	0.0%
D. Racial and Ethnic Composition of Each Age Group										
2000										
0-19	100.0%	99.5%	0.0%	0.2%	0.0%	0.0%	0.0%	0.0%	0.2%	0.2%
20-64	100.0%	99.1%	0.1%	0.4%	0.2%	0.0%	0.0%	0.1%	0.1%	0.4%
65+	100.0%	99.6%	0.0%	0.4%	0.0%	0.0%	0.0%	0.0%	0.4%	0.0%
85+	100.0%	100.0%	0.0%	0.0%	0.0%	0.0%	0.0%	0.0%	0.0%	0.0%
2010										
0-19	100.0%	96.4%	0.6%	1.8%	0.0%	0.0%	0.0%	0.0%	1.8%	1.2%
20-64	100.0%	98.4%	0.5%	1.0%	0.2%	0.1%	0.0%	0.0%	0.7%	0.2%
65+	100.0%	99.2%	0.8%	0.0%	0.0%	0.0%	0.0%	0.0%	0.0%	0.0%
85+	100.0%	97.6%	2.4%	0.0%	0.0%	0.0%	0.0%	0.0%	0.0%	0.0%
E. Population Growth										
2000-2010, Change										
0-19	-108	-118	2	5	0	0	0	0	5	3
20-64	16	8	4	6	0	1	0	-1	6	-2
65+	-5	-6	2	-1	0	0	0	0	-1	0
85+	21	20	1	0	0	0	0	0	0	0
Total	-97	-116	8	10	0	1	0	-1	10	1
2000-2010, Pct Change										
0-19	-24.6%	-27.0%	0.0%	500.0%	0.0%	0.0%	0.0%	0.0%	500.0%	300.0%
20-64	1.6%	0.8%	400.0%	150.0%	0.0%	0.0%	0.0%	-100.0%	600.0%	-50.0%
65+	-1.9%	-2.3%	0.0%	-100.0%	0.0%	0.0%	0.0%	0.0%	-100.0%	0.0%
85+	100.0%	95.2%	0.0%	0.0%	0.0%	0.0%	0.0%	0.0%	0.0%	0.0%
Total	-5.6%	-6.8%	800.0%	166.7%	0.0%	0.0%	0.0%	-100.0%	333.3%	20.0%

Source: Decennial Census 2010, 2000, American Community Survey 2008-2012

Prepared for the Pennsylvania State Library by The Pennsylvania State Data Center, 9/2014

Reference Data

Wilcox Public Library

	Total Population	White, Non- Hispanic	Black, Non- Hispanic	Other, Non- Hispanic	Detail for Other, Non-Hispanic					Hispanic or Latino
					AIAN	Asian	NHOPI	Some Other	Two or More	
								Race	Races	
F. Population by Library-Defined Age Groups, 2010										
0-5	104	98	2	4	0	0	0	0	4	0
6-10	82	80	0	2	0	0	0	0	2	0
11-13	34	33	0	0	0	0	0	0	0	1
14-18	103	100	0	0	0	0	0	0	0	3
19-32	204	201	3	0	0	0	0	0	0	0
33-45	265	262	0	3	0	1	0	0	2	0
46-64	571	560	2	7	2	0	0	0	5	2
65-84	219	218	1	0	0	0	0	0	0	0
85+	42	41	1	0	0	0	0	0	0	0
Total	1,624	1,593	9	16	2	1	0	0	13	6
G. Population by 5-Year Age Cohorts, 2010										
0-4	88	82	2	4	0	0	0	0	4	0
5-9	78	76	0	2	0	0	0	0	2	0
10-14	74	73	0	0	0	0	0	0	0	1
15-19	91	88	0	0	0	0	0	0	0	3
20-24	66	65	1	0	0	0	0	0	0	0
25-29	78	76	2	0	0	0	0	0	0	0
30-34	79	79	0	0	0	0	0	0	0	0
35-39	96	95	0	1	0	0	0	0	1	0
40-44	117	115	0	2	0	1	0	0	1	0
45-49	148	146	0	1	0	0	0	0	1	1
50-54	166	163	1	1	1	0	0	0	0	1
55-59	142	138	1	3	0	0	0	0	3	0
60-64	140	138	0	2	1	0	0	0	1	0
65-69	74	74	0	0	0	0	0	0	0	0
70-74	63	63	0	0	0	0	0	0	0	0
75-79	42	41	1	0	0	0	0	0	0	0
80-84	40	40	0	0	0	0	0	0	0	0
85-89	28	28	0	0	0	0	0	0	0	0
90-94	12	12	0	0	0	0	0	0	0	0
95-99	2	1	1	0	0	0	0	0	0	0
100+	0	0	0	0	0	0	0	0	0	0
Total	1,624	1,593	9	16	2	1	0	0	13	6

Source: Decennial Census 2010, 2000, American Community Survey 2008-2012
 Prepared for the Pennsylvania State Library by The Pennsylvania State Data Center, 9/2014

Reference Data

Wilcox Public Library

H. Income Distribution, 2008-2012

Range (in thousands)	Households	Pct of Total
<\$10K	24	3.5%
\$10K to <\$25K	109	15.9%
\$25K to <\$50K	190	27.8%
\$50K to <\$75K	176	25.7%
\$75K to <\$100K	87	12.7%
\$100K to <\$150K	84	12.3%
\$150K+	14	2.0%

I. Household Type, 2010

Household Type	2000	2000pct	2010	2010pct
Total Households	687	100.0%	687	100.0%
Family Households	480	69.9%	464	67.5%
Husband-wife, no children w/children	172	25.0%	111	16.2%
Female head, no husband, w/ children	15	2.2%	20	2.9%
Male head, no wife, w/ children	14	2.0%	13	1.9%
Without children	279	40.6%	320	46.6%
Nonfamily households	207	30.1%	223	32.5%
Living alone	182	26.5%	180	26.2%
Other nonfamily	25	3.6%	43	6.3%

J. Household Type by Race and Ethnicity, 2008-2012

Household Type	White, NH	Black, NH	Other, NH	Hispanic
Total Households	681	2	4	0
Husband wife family	55.4%	0.0%	50.0%	0.0%
Family with male head, no wife	5.9%	0.0%	0.0%	0.0%
family with female head, no husband	6.5%	50.0%	0.0%	0.0%
Living alone	26.3%	0.0%	25.0%	0.0%
Other nonfamily	6.0%	50.0%	25.0%	0.0%

K. Poverty, 2008-2012

Families	Poverty	PA
All families	4.3%	9.1%
Families w/ related children	10.7%	15.3%
Female householder, no husband present	23.6%	28.8%
Female householder, no husband present, w/ related children	48.1%	39.2%
All people	5.7%	13.1%
Under 18 years	16.8%	18.4%
18 to 64 years	3.7%	12.3%
65 years and over	2.7%	8.4%

L. Educational Attainment by Race and Ethnicity, 2008-2012

Education Level	White, NH	Black	Other	Hispanic	Total
Population 25 years and over	1,172	6	4	10	1,192
Less than high school	9.9%	0.0%	0%	0.0%	9.7%
High school graduate (includes equivalency	55.6%	0.0%	100%	100.0%	55.9%
Some college or associates degree	19.4%	50.0%	0%	0.0%	19.3%
Bachelors degree or higher	15.1%	50.0%	0%	0.0%	15.1%

M. Occupation, 2008-2012

Occupation	Estimate	Percent
Civilian population age 16 years and over	787	100.0%
Management, professional, and related occupations	193	24.5%
Service occupations	99	12.6%
Sales and office occupations	132	16.8%
Farming, fishing, and forestry occupations	25	3.2%
Construction, extraction, maintenance, and repair occupations	80	10.2%
Production, transportation, and material moving occupations	258	32.8%

N. Class of Worker, 2008-2012

Occupation	Estimate	Percent
Civilian population age 16 years and over	787	100.0%
Private, for profit, wage and salary employee	527	67.0%
Private, not for profit, wage and salary employee	62	7.9%
Private, for profit, wage and salary self-employed in own business	26	3.3%
Government workers	129	16.4%
Self-employed in own not incorporated business	43	5.5%
Unpaid family workers in family business	0	0.0%