

Demographic Profile Zelienople Public Library

Population Growth: The total population of the Zelienople Public Library service area decreased by -2.9 percent over the past decade to 10,891; this decline rate was lower than the statewide rate of 3.4 percent.

Age and Sex: In 2010, the Zelienople Public Library service area had a total population of 10,891 - 5,262 males (48.3 percent) and 5,629 females (51.7 percent). The age structure of the population in 2010 was as follows: 21.7 percent of the population was under 20 years old, 58.5 percent was 20 to 64 years old and 19.8 percent was 65 years or older.

Race and Ethnicity: For people reporting one race alone, not of Hispanic ethnicity, 97.3 percent were White; .5 percent were Black or African American; 1.3 percent were Other Race Alone.¹ A total of 91 or .8 percent of the population were Hispanic.²

Households: In 2010, there were 4,674 households in the Zelienople Public Library service area. The average household size was 2.31 people. Families made up 65.5 percent of the households. This figure includes both families with (23.9 percent) and without (41.5 percent) children. Of families with children less than 18 years old, 18.9 percent were married-couple families, 3.5 percent were female householder families with no husband present, and the remaining (1.5 percent) were male-headed households with no wife present.

Education: The educational attainment of the population 25 years and over was higher in the Zelienople Public Library service area than in Pennsylvania. During the period 2008-2012, 30.6 percent of residents had earned a Bachelor's degree or higher, compared with 27.0 percent statewide. A total of 618 or 7.7 percent had not completed high school, compared with 11.7 percent for the commonwealth as a whole.

Income and Poverty: Households with incomes of \$25,000 to \$49,999 (26.1 percent) made up the largest percent of households in the Zelienople Public Library service area in 2008-2012. For comparison, 24.4 percent of commonwealth households were in this range during the period.

In 2008-2012, the overall poverty rate for the Zelienople Public Library service area was lower than Pennsylvania (5.1 percent compared to 13.1 percent). The poverty rate for the population under 18 years of age was 3.1 percent, compared with 6.1 percent of people 18 to 64 years and 4.1 percent for those aged 65 years and over. A total of 69 or 2.3 percent of all families had incomes below poverty level. In 2008-2012, 3.7 percent of families with related children and 19.6 percent of families with a female householder and no husband with related children present had incomes below the poverty level.

Class of Worker and Occupation: In 2008-2012, 86.1 percent of the workforce was private wage and salary workers; 8.2 percent were federal, state, or local government workers; and 5.8 percent were self-employed in their own (not incorporated) business.

The top occupation group for the civilian employed population 16 years and over in the Zelienople Public Library service area in 2008-2012 was Sales and office (31.6 percent).

¹ Other race includes those who identified themselves as American Indian/Alaska Native, Asian, Native Hawaiian/Other Pacific Islander, Some Other Race and Two or More Races on the 2010 Census form.

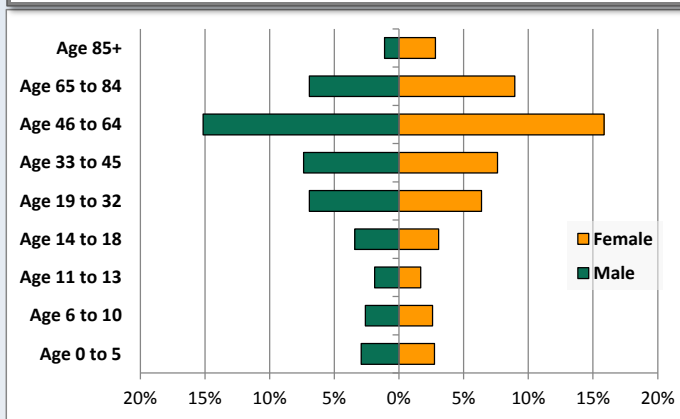
² People of Hispanic origin may be of any race.

Demographic Profile

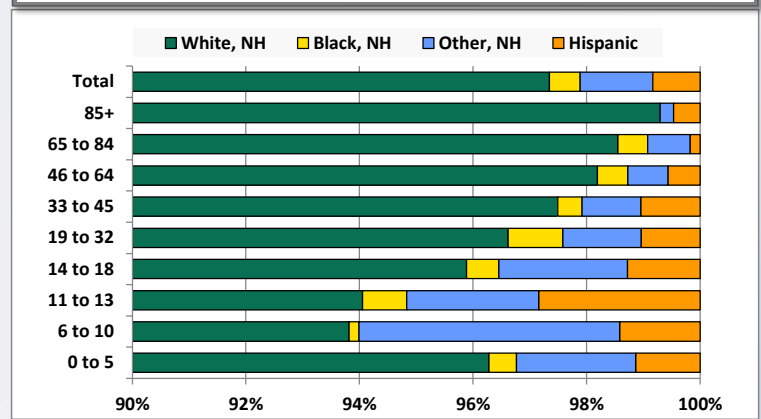
Zelienople Public Library

Key Indicators		
	2000	2010
Population Growth		
Total Population	11,216	10,891
10-Year Growth	N/A	-2.9%
Diversity		
White Alone, Non-Hispanic	98.0%	97.3%
Black Alone, Non-Hispanic	0.5%	0.5%
Other Race Alone, Non-Hispanic	1.1%	1.3%
Percent Hispanic	0.4%	0.8%
Aging		
Percent 65 Years and Over	17.6%	19.8%
Households		
Percent Married Couple with Own Children	22.2%	18.9%
Percent Living Alone	28.8%	29.7%

Population by Library-Defined Age Group, 2010



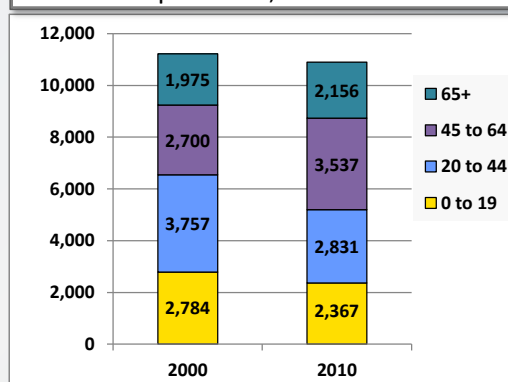
Race/Ethnicity by Library-Defined Age Group, 2010



Population Growth by Library-Defined Age Group, 2000 to 2010

Age Group	2010	Change	
		Numeric	Percent
Total	10,891	-325	-2.9%
85+	427	75	21.3%
65 to 84	1,729	106	6.5%
46 to 64	3,376	862	34.3%
33 to 45	1,634	-808	-33.1%
19 to 32	1,449	-161	-10.0%
14 to 18	705	-89	-11.2%
11 to 13	387	-63	-14.0%
6 to 10	566	-138	-19.6%
0 to 5	618	-109	-15.0%

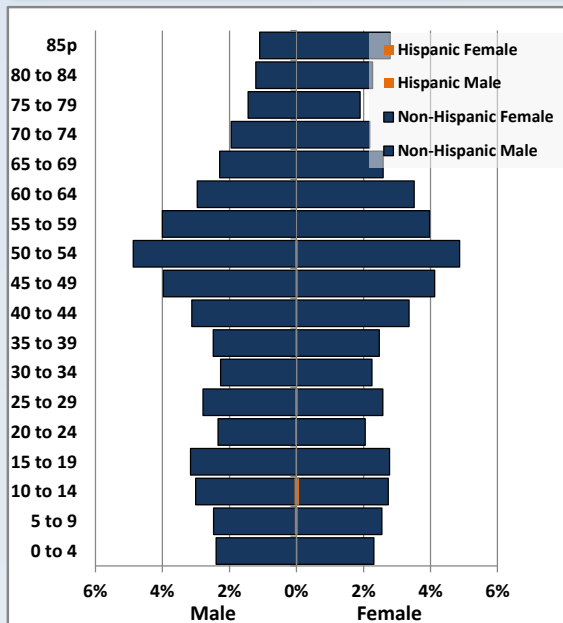
Population Total, 2000 and 2010



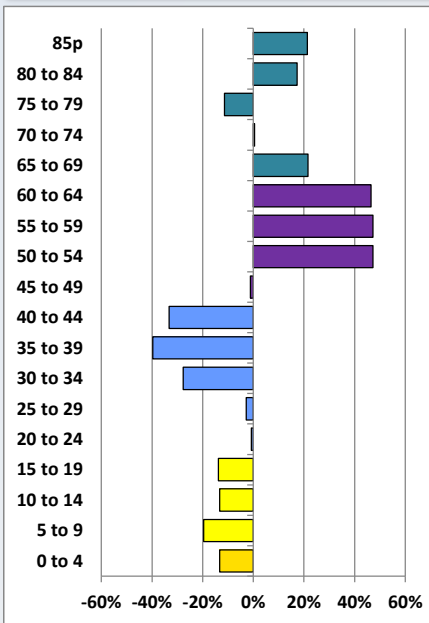
Demographic Profile

Zelienople Public Library

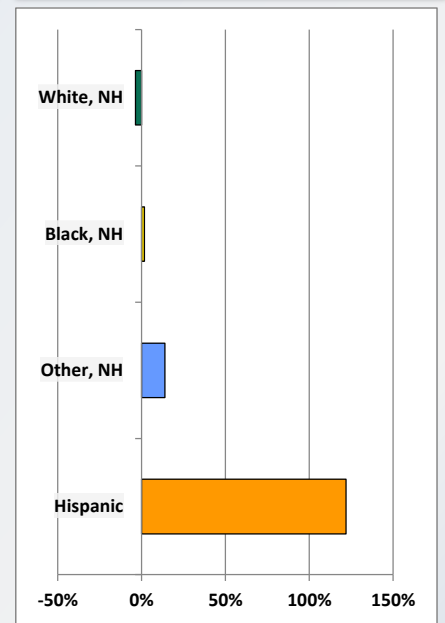
Population by 5-Year Age Cohorts



Pop Change by Age, 2000 to 2010

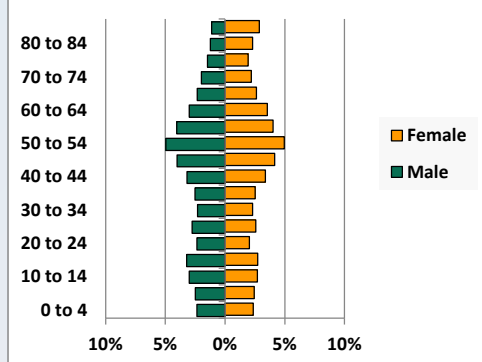


Pop Change by Race/Ethnicity, 2000 to 2010

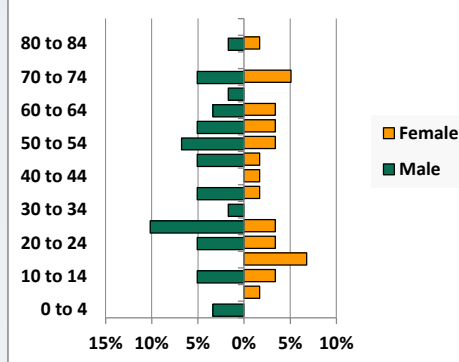


Population by Age, Race and Ethnicity 2010

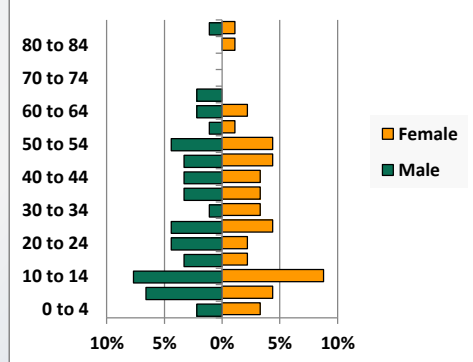
White, Not Hispanic



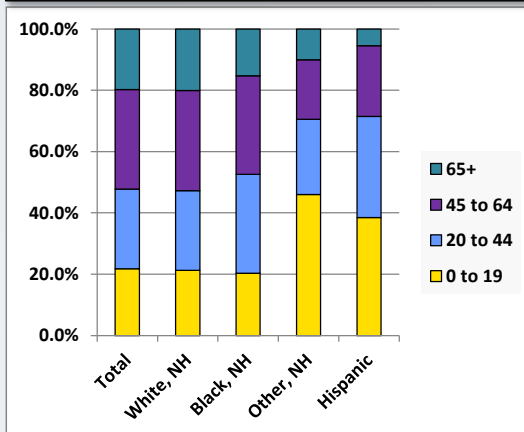
Black, Non-Hispanic



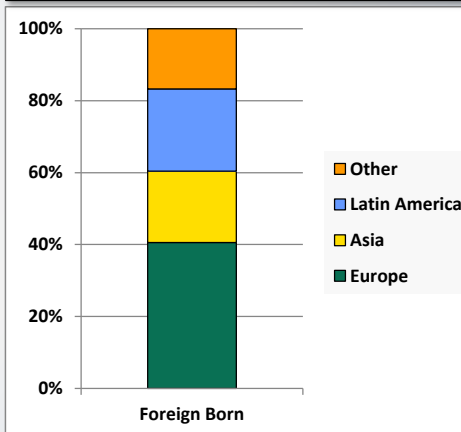
Hispanic



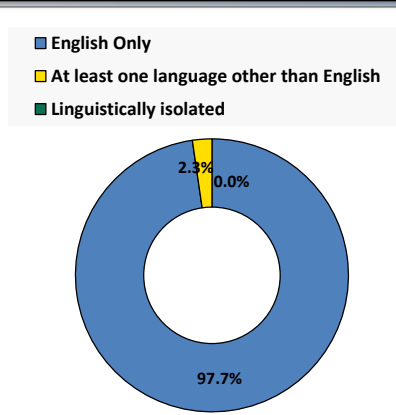
Age by Race and Ethnicity, 2010



Foreign Born, 2010



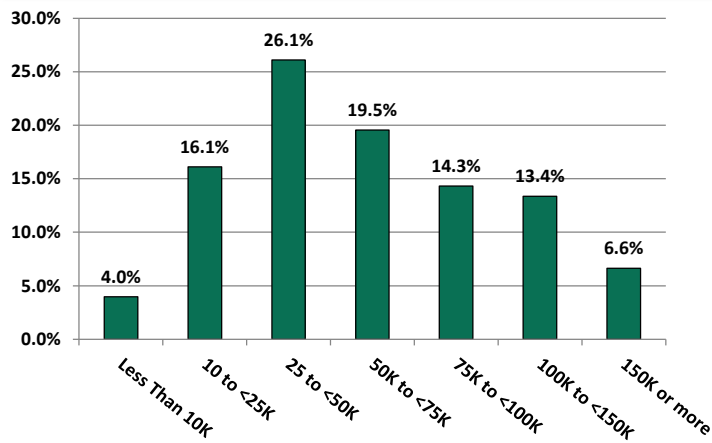
Household Language, 2010



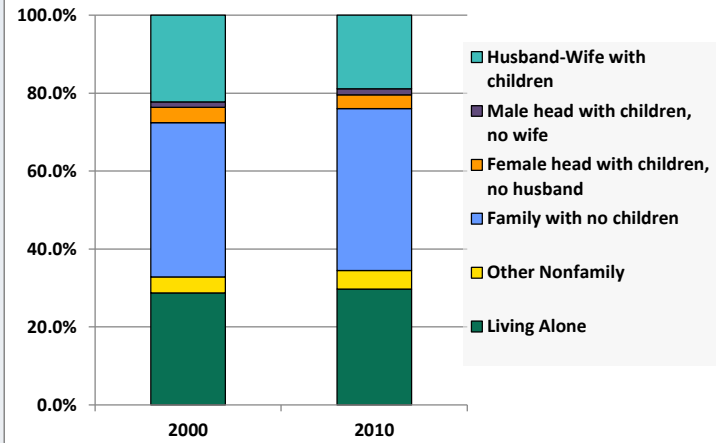
Demographic Profile

Zelienople Public Library

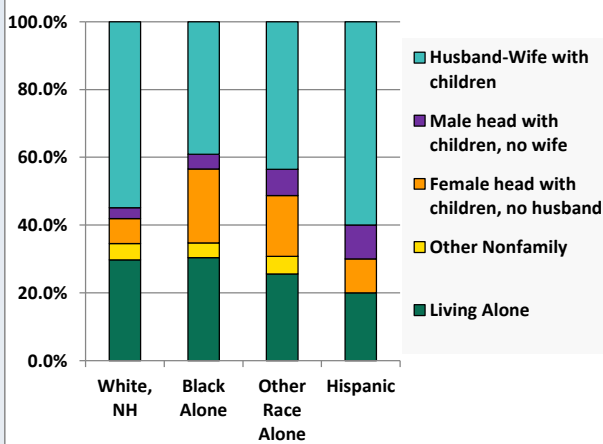
Household Income Distribution, 2008-2012



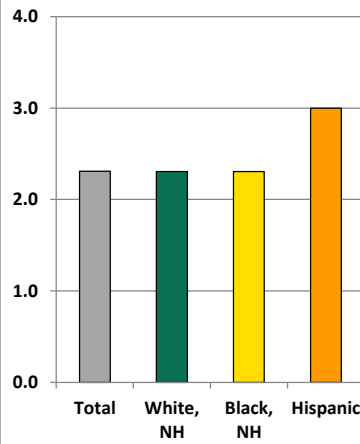
Household Type, 2000 and 2010



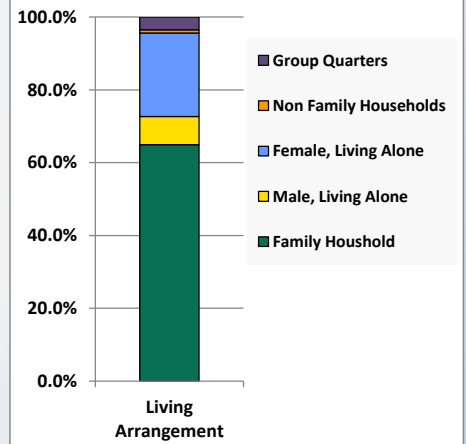
Household Type by Race/Ethnicity, 2010



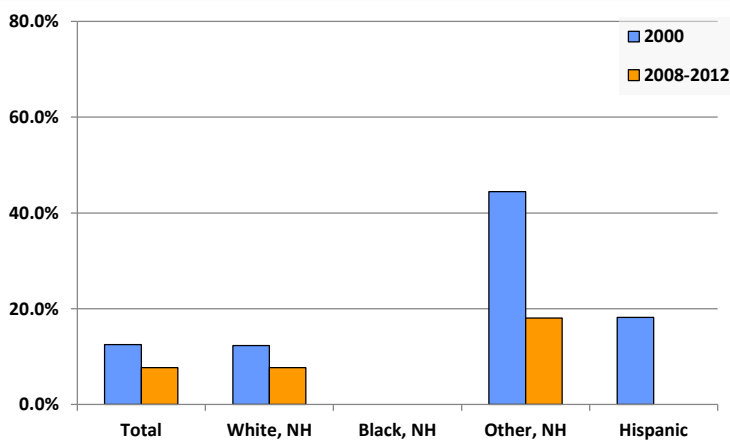
Average Household Size, 2010



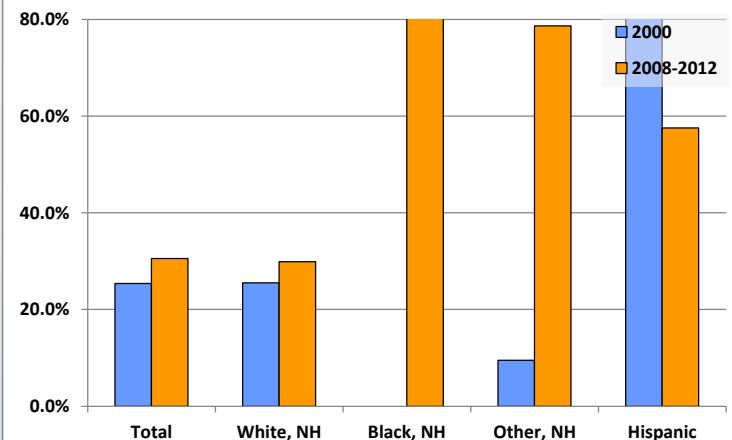
Living Arrangements 65+, 2008-2012



Percent of Adults that Did Not Complete High School



Percent of Adults Who Attained a Bachelor's Degree or Higher



Reference Data

Zelienople Public Library

	Total Population	White, Non- Hispanic	Black, Non- Hispanic	Other, Non- Hispanic	Detail for Other, Non-Hispanic					
					AIAN	Asian	NHOPI	Some Other Race	Two or More Races	Hispanic or Latino
A. Total Population										
2000 Total	11,216	10,995	58	122	8	43	1	7	63	41
2000 pct of Total	100.0%	98.0%	0.5%	1.1%	0.1%	0.4%	0.0%	0.1%	0.6%	0.4%
2010 Total	10,891	10,602	59	139	5	48	5	7	74	91
2010 pct of Total	100.0%	97.3%	0.5%	1.3%	0.0%	0.4%	0.0%	0.1%	0.7%	0.8%
B. Population by Major Age Groups by Race and Ethnicity										
2000										
0-19	2,784	2,690	27	55	1	12	1	5	36	12
20-64	6,457	6,345	24	64	7	30	0	2	25	24
65+	1,975	1,960	7	3	0	1	0	0	2	5
85+	352	349	0	1	0	0	0	0	1	2
2010										
0-19	2,367	2,256	12	64	0	22	0	6	36	35
20-64	6,368	6,218	38	61	4	20	3	0	34	51
65+	2,156	2,128	9	14	1	6	2	1	4	5
85+	427	424	0	1	0	1	0	0	0	2
C. Age Mix for Each Racial and Ethnic Group										
2000										
0-19	24.8%	24.5%	46.6%	45.1%	12.5%	27.9%	100.0%	71.4%	57.1%	29.3%
20-64	57.6%	57.7%	41.4%	52.5%	87.5%	69.8%	0.0%	28.6%	39.7%	58.5%
65+	17.6%	17.8%	12.1%	2.5%	0.0%	2.3%	0.0%	0.0%	3.2%	12.2%
85+	3.1%	3.2%	0.0%	0.8%	0.0%	0.0%	0.0%	0.0%	1.6%	4.9%
2010										
0-19	21.7%	21.3%	20.3%	46.0%	0.0%	45.8%	0.0%	85.7%	48.6%	38.5%
20-64	58.5%	58.6%	64.4%	43.9%	80.0%	41.7%	60.0%	0.0%	45.9%	56.0%
65+	19.8%	20.1%	15.3%	10.1%	20.0%	12.5%	40.0%	14.3%	5.4%	5.5%
85+	3.9%	4.0%	0.0%	0.7%	0.0%	2.1%	0.0%	0.0%	0.0%	2.2%
D. Racial and Ethnic Composition of Each Age Group										
2000										
0-19	100.0%	96.6%	1.0%	2.0%	0.0%	0.4%	0.0%	0.2%	1.3%	0.4%
20-64	100.0%	98.3%	0.4%	1.0%	0.1%	0.5%	0.0%	0.0%	0.4%	0.4%
65+	100.0%	99.2%	0.4%	0.2%	0.0%	0.1%	0.0%	0.0%	0.1%	0.3%
85+	100.0%	99.1%	0.0%	0.3%	0.0%	0.0%	0.0%	0.0%	0.3%	0.6%
2010										
0-19	100.0%	95.3%	0.5%	2.7%	0.0%	0.9%	0.0%	0.3%	1.5%	1.5%
20-64	100.0%	97.6%	0.6%	1.0%	0.1%	0.3%	0.0%	0.0%	0.5%	0.8%
65+	100.0%	98.7%	0.4%	0.6%	0.0%	0.3%	0.1%	0.0%	0.2%	0.2%
85+	100.0%	99.3%	0.0%	0.2%	0.0%	0.2%	0.0%	0.0%	0.0%	0.5%
E. Population Growth										
2000-2010, Change										
0-19	-417	-434	-15	9	-1	10	-1	1	0	23
20-64	-89	-127	14	-3	-3	-10	3	-2	9	27
65+	181	168	2	11	1	5	2	1	2	0
85+	75	75	0	0	0	1	0	0	-1	0
Total	-325	-393	1	17	-3	5	4	0	11	50
2000-2010, Pct Change										
0-19	-15.0%	-16.1%	-55.6%	16.4%	-100.0%	83.3%	-100.0%	20.0%	0.0%	191.7%
20-64	-1.4%	-2.0%	58.3%	-4.7%	-42.9%	-33.3%	0.0%	-100.0%	36.0%	112.5%
65+	9.2%	8.6%	28.6%	366.7%	0.0%	500.0%	0.0%	0.0%	100.0%	0.0%
85+	21.3%	21.5%	0.0%	0.0%	0.0%	0.0%	0.0%	0.0%	-100.0%	0.0%
Total	-2.9%	-3.6%	1.7%	13.9%	-37.5%	11.6%	400.0%	0.0%	17.5%	122.0%

Reference Data

Zelienople Public Library

	Total Population	White, Non- Hispanic	Black, Non- Hispanic	Other, Non- Hispanic	Detail for Other, Non-Hispanic					Hispanic or Latino
					AIAN	Asian	NHOPI	Some Other	Two or More	
								Race	Races	
F. Population by Library-Defined Age Groups, 2010										
0-5	618	595	3	13	0	4	0	3	6	7
6-10	566	531	1	26	0	11	0	2	13	8
11-13	387	364	3	9	0	3	0	0	6	11
14-18	705	676	4	16	0	4	0	1	11	9
19-32	1,449	1,400	14	20	0	4	3	0	13	15
33-45	1,634	1,593	7	17	0	8	0	0	9	17
46-64	3,376	3,315	18	24	4	8	0	0	12	19
65-84	1,729	1,704	9	13	1	5	2	1	4	3
85+	427	424	0	1	0	1	0	0	0	2
Total	10,891	10,602	59	139	5	48	5	7	74	91
G. Population by 5-Year Age Cohorts, 2010										
0-4	517	500	2	10	0	3	0	2	5	5
5-9	557	523	1	23	0	11	0	3	9	10
10-14	641	604	5	17	0	5	0	0	12	15
15-19	652	629	4	14	0	3	0	1	10	5
20-24	484	467	5	6	0	3	1	0	2	6
25-29	593	564	8	13	0	1	2	0	10	8
30-34	496	488	1	3	0	1	0	0	2	4
35-39	546	533	4	3	0	2	0	0	1	6
40-44	712	696	1	9	0	5	0	0	4	6
45-49	889	869	4	9	1	1	0	0	7	7
50-54	1,069	1,051	6	4	1	1	0	0	2	8
55-59	870	856	5	7	1	2	0	0	4	2
60-64	709	694	4	7	1	4	0	0	2	4
65-69	534	526	1	5	0	1	1	1	2	2
70-74	451	443	6	2	0	1	0	0	1	0
75-79	364	360	0	4	1	2	1	0	0	0
80-84	380	375	2	2	0	1	0	0	1	1
85-89	288	286	0	1	0	1	0	0	0	1
90-94	105	104	0	0	0	0	0	0	0	1
95-99	30	30	0	0	0	0	0	0	0	0
100+	4	4	0	0	0	0	0	0	0	0
Total	10,891	10,602	59	139	5	48	5	7	74	91

Reference Data

Zelienople Public Library

H. Income Distribution, 2008-2012

Range (in thousands)	Households	Pct of Total
<\$10K	188	4.0%
\$10K to <\$25K	765	16.1%
\$25K to <\$50K	1,239	26.1%
\$50K to <\$75K	928	19.5%
\$75K to <\$100K	680	14.3%
\$100K to <\$150K	634	13.4%
\$150K+	315	6.6%

I. Household Type, 2010

Household Type	2000	2000pct	2010	2010pct
Total Households	4,629	100.0%	4,674	100.0%
Family Households	3,107	67.1%	3,061	65.5%
Husband-wife, no children w/children	1,029	22.2%	884	18.9%
Female head, no husband, w/ children	182	3.9%	163	3.5%
Male head, no wife, w/ children	65	1.4%	72	1.5%
Without children	1,831	39.6%	1,942	41.5%
Nonfamily households	1,522	32.9%	1,613	34.5%
Living alone	1,331	28.8%	1,389	29.7%
Other nonfamily	191	4.1%	224	4.8%

J. Household Type by Race and Ethnicity, 2008-2012

Household Type	White, NH	Black, NH	Other, NH	Hispanic
Total Households	4,597	23	39	20
Husband wife family	54.8%	39.1%	43.6%	60.0%
Family with male head, no wife	3.2%	4.3%	7.7%	10.0%
family with female head, no husband	7.4%	21.7%	17.9%	10.0%
Living alone	29.8%	30.4%	25.6%	20.0%
Other nonfamily	4.8%	4.3%	5.1%	0.0%

K. Poverty, 2008-2012

Families	Poverty	PA
All families	2.3%	9.1%
Families w/ related children	3.7%	15.3%
Female householder, no husband present	13.0%	28.8%
Female householder, no husband present, w/ related children	19.6%	39.2%
All people	5.1%	13.1%
Under 18 years	3.1%	18.4%
18 to 64 years	6.1%	12.3%
65 years and over	4.1%	8.4%

L. Educational Attainment by Race and Ethnicity, 2008-2012

Education Level	White, NH	Black	Other	Hispanic	Total
Population 25 years and over	7,888	33	61	33	7,999
Less than high school	7.7%	0.0%	18%	0.0%	7.7%
High school graduate (includes equivalency)	39.1%	0.0%	0%	18.2%	38.6%
Some college or associates degree	23.3%	0.0%	3%	24.2%	23.1%
Bachelors degree or higher	29.9%	100.0%	79%	57.6%	30.6%

M. Occupation, 2008-2012

Occupation	Estimate	Percent
Civilian population age 16 years and over	5,266	100.0%
Management, professional, and related occupations	1,585	30.1%
Service occupations	701	13.3%
Sales and office occupations	1,662	31.6%
Farming, fishing, and forestry occupations	34	0.6%
Construction, extraction, maintenance, and repair occupations	523	9.9%
Production, transportation, and material moving occupations	761	14.5%

N. Class of Worker, 2008-2012

Occupation	Estimate	Percent
Civilian population age 16 years and over	5,266	100.0%
Private, for profit, wage and salary employee	3,871	73.5%
Private, not for profit, wage and salary employee	485	9.2%
Private, for profit, wage and salary self-employed in own business	176	3.3%
Government workers	431	8.2%
Self-employed in own not incorporated business	303	5.8%
Unpaid family workers in family business	0	0.0%